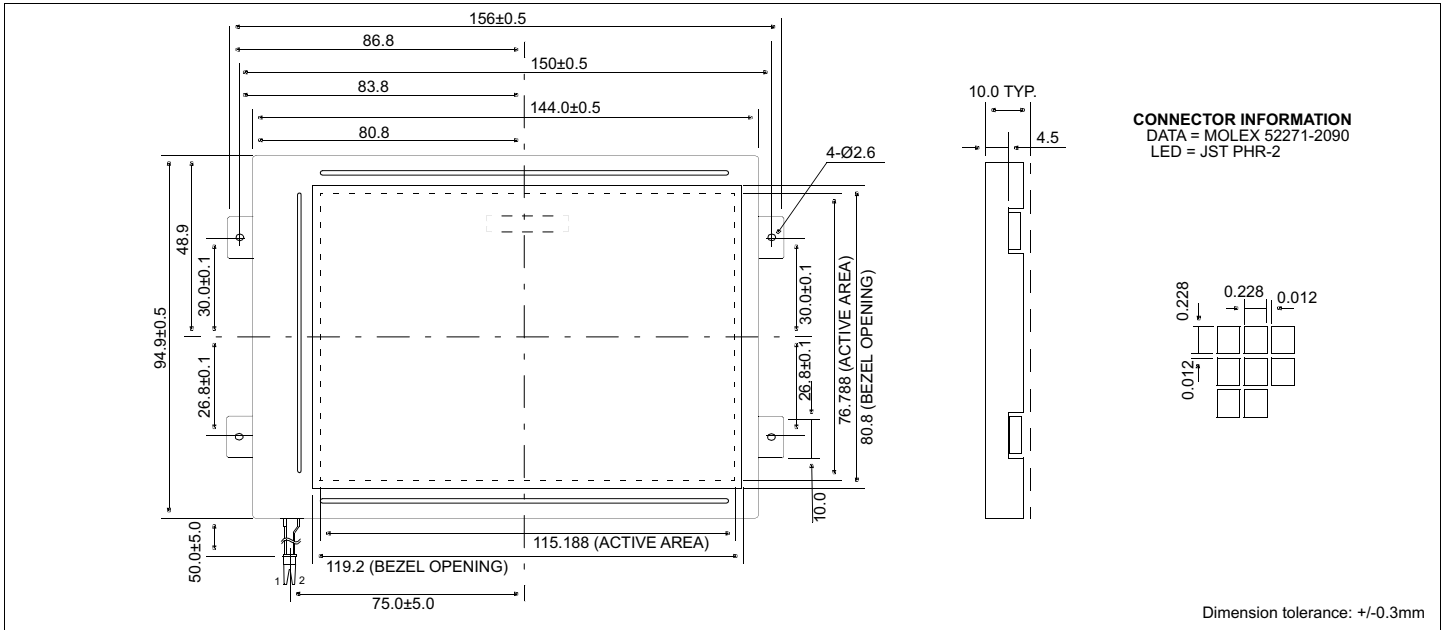


HDM4832L

Dimensional Drawing

480 X 320 Dots Graphics White LED Backlight



Features

Backlight.....White LED
 Options.....FSTN, Wide Temperature, Bottom Viewing
 Built-in Controller.....None

Physical Data

Module Size.....156.0W x 94.9H x 11.5T mm
 Viewing Area Size.....119.2W x 80.8H mm
 Dot Pitch.....0.24W x 0.24H mm
 Dot Size.....0.228W x 0.228H mm
 Weight.....132g

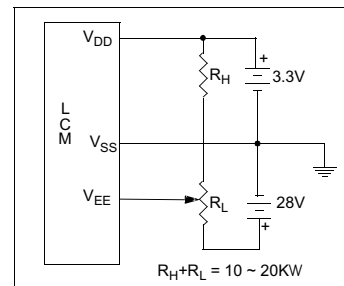
Absolute Maximum Ratings

PARAMETER	SYMBOL	MIN	MAX	UNIT
SUPPLY VOLTAGE	$V_{DD}-V_{SS}$	-0.3	6.5	V
SUPPLY VOLTAGE FOR LCD	$V_{EE}-V_{SS}$	0	27.0	V
INPUT VOLTAGE	V_{IN}	-	7.0	V
OPERATING TEMPERATURE	T_{OP}	-20	70	°C
STORAGE TEMPERATURE	T_{STG}	-30	80	°C

Electrical Characteristics (VDD=3.3±0.5V 25°C)

PARAMETER	SYM	CONDITION	MIN	TYP	MAX	UNIT
LOGIC POWER SUPPLY	V_{DD}	$T_A=25^\circ\text{C}$	2.7	3.3	5.5	V
INPUT HIGH VOLTAGE	V_{IH}	-	-	$0.2V_{DD}$	-	V
INPUT LOW VOLTAGE	V_{IL}	-	-	$0.8V_{DD}$	V_{DD}	V
LCD OPERATING VOLTAGE	VEE-VSS	$T_A=-20^\circ\text{C}$	25.2	25.7	26.2	V
		$T_A=0^\circ\text{C}$	23.4	23.9	24.4	
		$T_A=25^\circ\text{C}$	22.4	22.9	23.4	
		$T_A=50^\circ\text{C}$	21.5	22.0	22.5	
		$T_A=70^\circ\text{C}$	20.8	21.3	21.8	
POWER SUPPLY CURRENT	I_{DD}	$V_{DD}=3.3\text{V}$	-	0.2	0.6	mA
	I_{EE}	$V_{EE}=22.9\text{V}$	-	13	18	mA
LED FORWARD VOLTAGE	V_F	-	3.6	4.0	4.4	V
LED FORWARD CURRENT	I_F	-	120	140	160	mA
BRIGHTNESS	L	$I_{LED}=140\text{mA}$	36	-	51	cd/m ²
DRIVE METHOD	1/240 DUTY					

Power Supply



Pin Connections

PIN NO.	SYMBOL	FUNCTION	
1	GND	Signal Ground	
2	GND		
3	V_{DD}	+3.3v	Logic Power Supply
4	FLM	H/L	Frame Pulse
5	M	-	Alternating Signal
6	CL1	H/H® L	Data latch signal
7	ENAB	H	Display Enable
8	CL2	H/H® L	Data Shift
9	D0	H/L	Data bus
10	D1	H/L	
11	D2	H/L	
12	D3	H/L	
13	D4	H/L	
14	D5	H/L	
15	D6	H/L	
16	D7	H/L	
17	V_{EE}	-	Power supply voltage for LC
18	V_{DD}	+3.3v	Logic Power Supply
19	GND	Signal Ground	
20	GND		