

Monolithic crystal filter

MQF20.0-0500/01



Application

- 2 pol filter
- i.f.- filter
- use in mobile and stationary transceivers

Limiting values

		Unit	Value
Center frequency	f_0	MHz	20.0
Insertion loss		dB	≤ 1.0
Pass band at 3.0 dB		kHz	± 2.5
Ripple in pass band	$f_0 \pm 1.8$ kHz	dB	≤ 1.0
Stop band attenuation	$f_0 \pm 40$ kHz	dB	≥ 40
Alternate attenuation	$f_0 \pm 0.5...5$ MHz	dB	> 50 except spurious

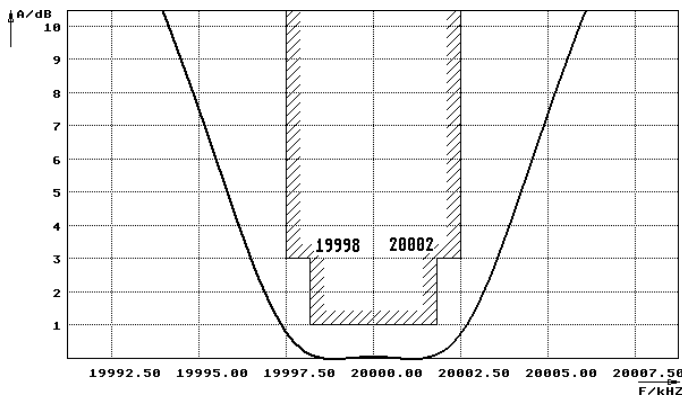
Terminating impedance Z

R1 C1	Ohm/pF	850 8
R2 C2	Ohm/pF	850 8

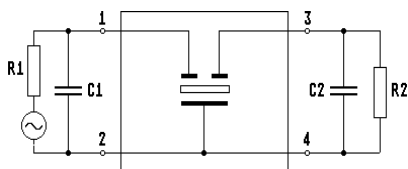
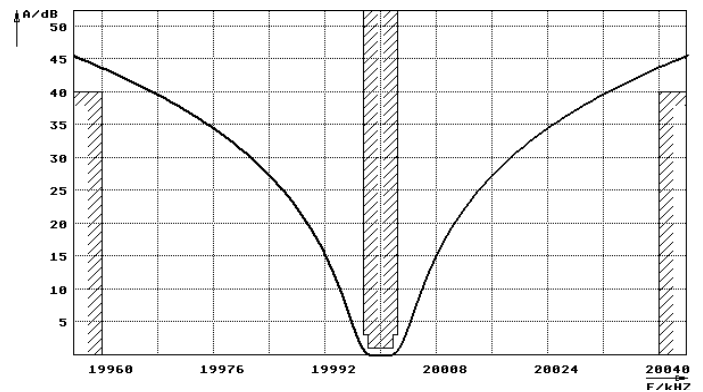
Operating temp. range	$^{\circ}\text{C}$	-20... +70
-----------------------	--------------------	------------

Characteristics MQF20.0-0500/01

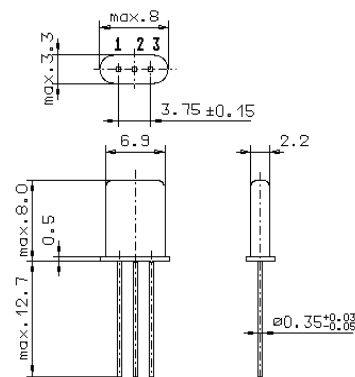
Pass band



Stop band



Pin connections: 1 Input
2 Input-E
3 Output
4 Output-E



GH9

