

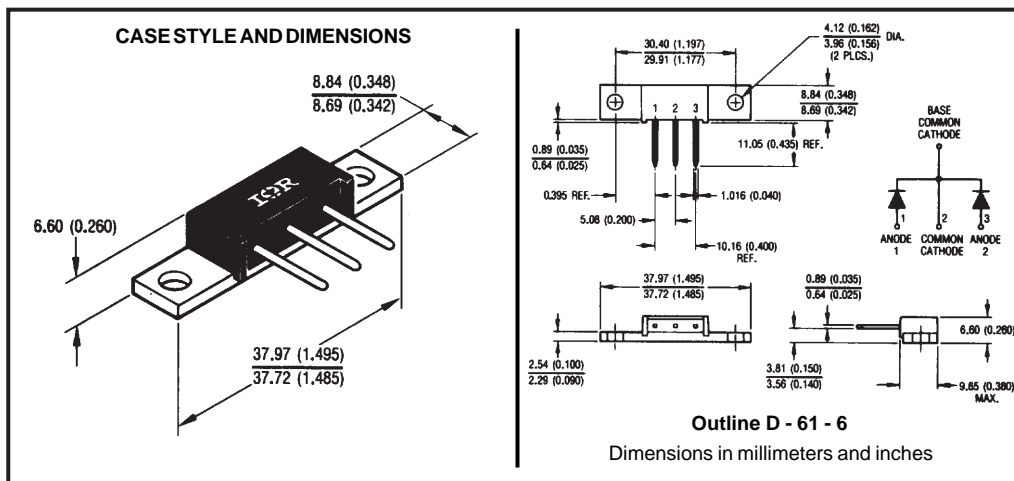
Major Ratings and Characteristics

| Characteristics | 61CNQ... | Units |
|---|------------|------------------|
| $I_{F(AV)}$ Rectangular waveform | 60 | A |
| V_{RRM} | 35 to 45 | V |
| I_{FSM} @ tp = 5 μ s sine | 6300 | A |
| V_F @ 30 Apk, $T_J = 125^\circ\text{C}$ (per leg) | 0.49 | V |
| T_J | -55 to 175 | $^\circ\text{C}$ |

Description/Features

The 61CNQ center tap Schottky rectifier module series has been optimized for low reverse leakage at high temperature. The proprietary barrier technology allows for reliable operation up to 175 $^\circ\text{C}$ junction temperature. Typical applications are in switching power supplies, converters, free-wheeling diodes, and reverse battery protection.

- 175 $^\circ\text{C}$ T_J operation
- Center tap module
- High purity, high temperature epoxy encapsulation for enhanced mechanical strength and moisture resistance
- Low forward voltage drop
- High frequency operation
- Guard ring for enhanced ruggedness and long term reliability
- Low profile, small footprint, high current package



Voltage Ratings

| Part number | 61CNQ035 | 61CNQ040 | 61CNQ045 |
|---|----------|----------|----------|
| V_R Max. DC Reverse Voltage (V) | 35 | 40 | 45 |
| V_{RWM} Max. Working Peak Reverse Voltage (V) | | | |

Absolute Maximum Ratings

| Parameters | 61CNQ | Units | Conditions |
|---|-------|-------|--|
| $I_{F(AV)}$ Max. Average Forward Current * See Fig. 5 | 60 | A | 50% duty cycle @ $T_C = 149^\circ\text{C}$, rectangular waveform |
| I_{FSM} Max. Peak One Cycle Non-Repetitive Surge Current (Per Leg) * See Fig. 7 | 6300 | A | 5 μs Sine or 3 μs Rect. pulse Following any rated load condition and with rated V_{RWM} applied |
| | 820 | | |
| E_{AS} Non-Repetitive Avalanche Energy (Per Leg) | 40 | mJ | $T_J = 25^\circ\text{C}$, $I_{AS} = 6\text{ Amps}$, $L = 2.2\text{ mH}$ |
| I_{AR} Repetitive Avalanche Current (Per Leg) | 6 | A | Current decaying linearly to zero in 1 μsec Frequency limited by T_J max. $V_A = 1.5 \times V_R$ typical |

Electrical Specifications

| Parameters | 61CNQ | Units | Conditions |
|--|--------|------------------|---|
| V_{FM} Max. Forward Voltage Drop (Per Leg) * See Fig. 1 (1) | 0.56 | V | @ 30A $T_J = 25^\circ\text{C}$ |
| | 0.68 | V | @ 60A |
| | 0.49 | V | @ 30A $T_J = 125^\circ\text{C}$ |
| | 0.60 | V | @ 60A |
| I_{RM} Max. Reverse Leakage Current (Per Leg) * See Fig. 2 (1) | 5 | mA | $T_J = 25^\circ\text{C}$ $V_R = \text{rated } V_R$ |
| | 45 | mA | $T_J = 125^\circ\text{C}$ |
| C_T Max. Junction Capacitance (Per Leg) | 2600 | pF | $V_R = 5V_{DC}$, (test signal range 100Khz to 1Mhz) 25°C |
| L_S Typical Series Inductance (Per Leg) | 6.0 | nH | Measured lead to lead 5mm from package body |
| dv/dt Max. Voltage Rate of Change (Rated V_R) | 10,000 | V/ μs | |

(1) Pulse Width < 300 μs , Duty Cycle <2%

Thermal-Mechanical Specifications

| Parameters | 61CNQ | Units | Conditions |
|---|-------------|--------------------|--------------------------------------|
| T_J Max. Junction Temperature Range | -55 to 175 | $^\circ\text{C}$ | |
| T_{stg} Max. Storage Temperature Range | -55 to 175 | $^\circ\text{C}$ | |
| R_{thJC} Max. Thermal Resistance Junction to Case (Per Leg) | 0.85 | $^\circ\text{C/W}$ | DC operation * See Fig. 4 |
| R_{thJC} Max. Thermal Resistance Junction to Case (Per Package) | 0.42 | $^\circ\text{C/W}$ | DC operation |
| R_{thCS} Typical Thermal Resistance, Case to Heatsink | 0.30 | $^\circ\text{C/W}$ | Mounting surface, smooth and greased |
| wt Approximate Weight | 7.8(0.28) | g(oz.) | |
| T Mounting Torque | Min. 40(35) | Kg-cm (lbf-in) | |
| | Max. 58(50) | | |
| Case Style | D-61-6 | | |

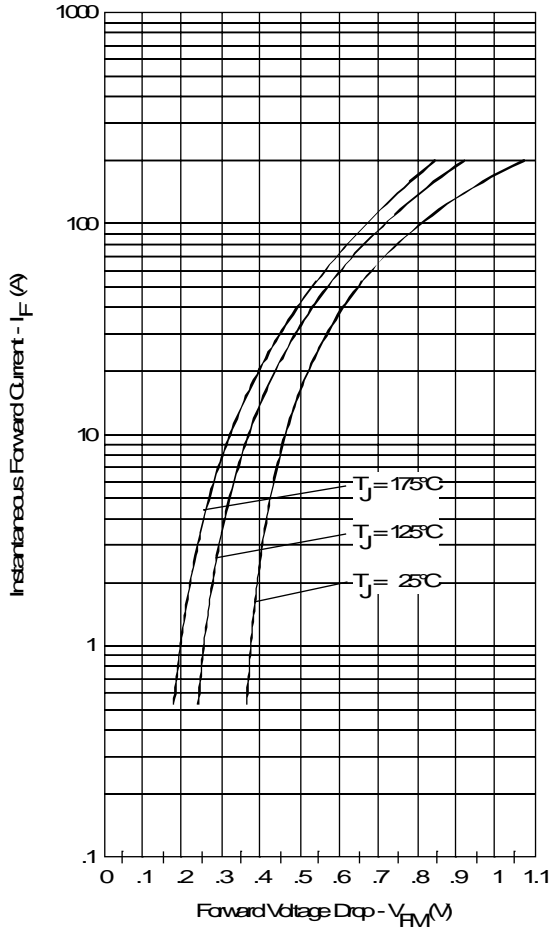


Fig. 1 - Max. Forward Voltage Drop Characteristics (Per Leg)

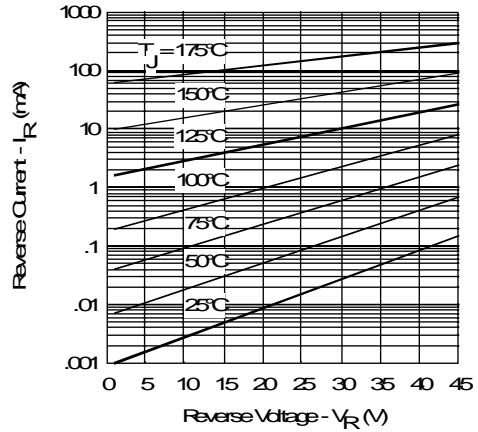


Fig. 2 - Typical Values Of Reverse Current Vs. Reverse Voltage (Per Leg)

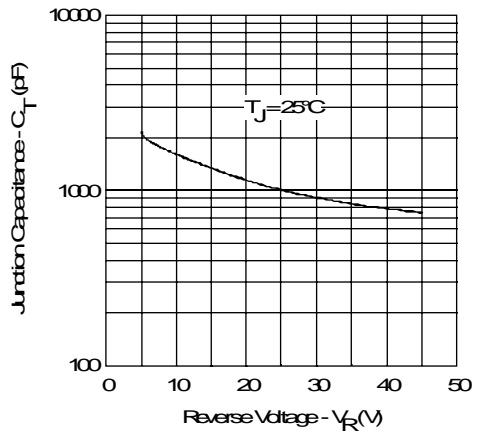


Fig. 3 - Typical Junction Capacitance Vs. Reverse Voltage (Per Leg)

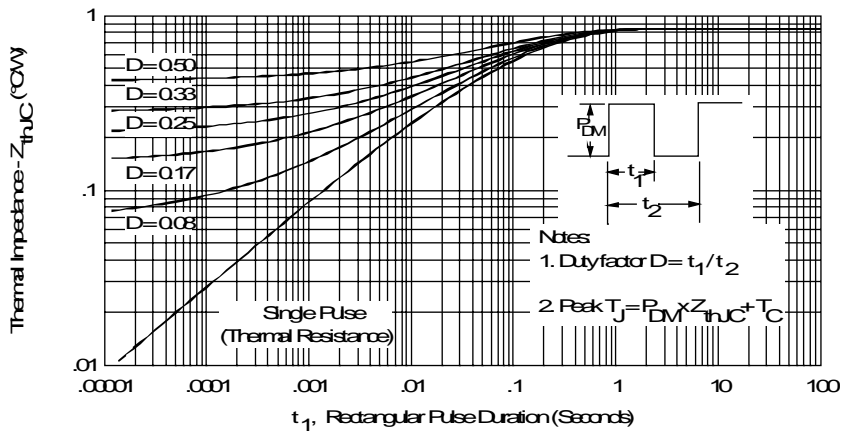


Fig. 4 - Max. Thermal Impedance Z_{thJC} Characteristics (Per Leg)

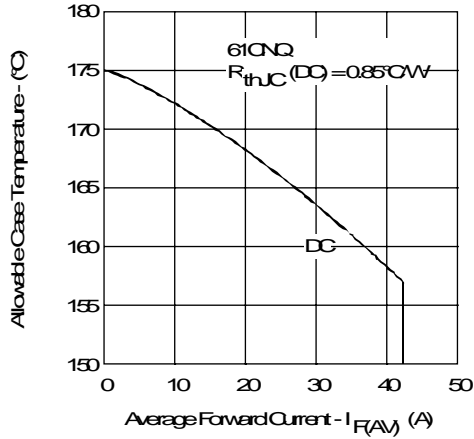


Fig. 5- Max. Allowable Case Temperature Vs. Average Forward Current (Per Leg)

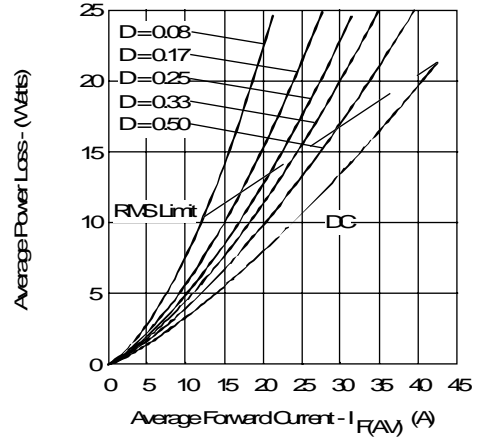


Fig. 6- Forward Power Loss Characteristics (Per Leg)

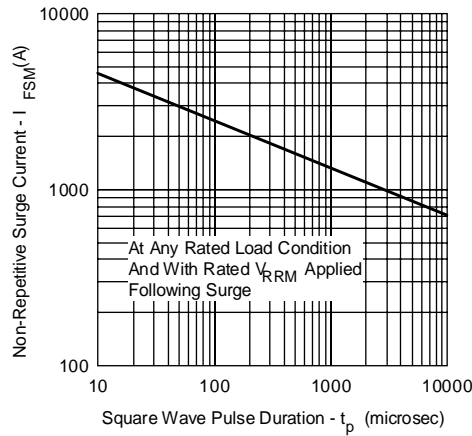


Fig. 7- Max. Non-Repetitive Surge Current (Per Leg)

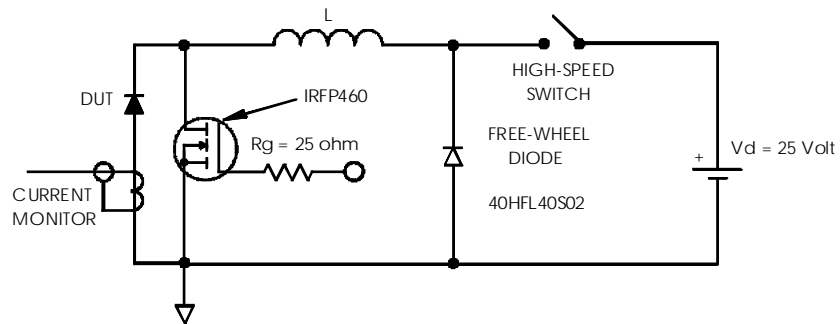


Fig. 8- Unclamped Inductive Test Circuit