

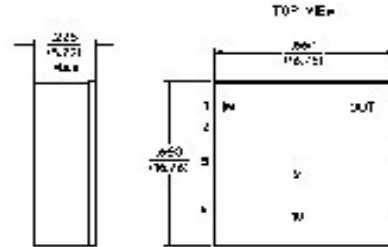
**High Intercept Amplifier,  
15 - 100 MHz**

**AM05-0006  
V2**

**Features**

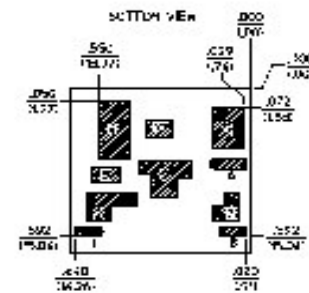
- Gain: 10.1 dB Nominal
- IP3 of +43 dBm Typical
- Land Grid Array (LGA) Package
- Compression point of +27 dBm Typical
- 50 ohm impedance
- Test boards are available
- Tape and Reel Packaging Available

**LGA-1**



**Description**

M/A-COM's AM05-0006 is a coupler feedback amplifier with high intercept and compression points. This device is in a ceramic land grid array package. This package is designed for standard surface mount pick and place. Due to the ceramic package the thermal rise minimized. The ground plane on the PC board should be configured to remove heat from under the package. AM05-0006 is ideally suited for use where a high intercept commercial amplifier is required at a low cost.



www.DataSheet4U.com

**Electrical Specifications: T<sub>A</sub> = 25°C**

Parameter	Test Conditions	Frequency	Units	Min.	Typ.	Max.
Gain	—	50 MHz	dB	9.6	10.1	10.6
Gain Flatness	—	15 - 100 MHz	dB	—	±0.2	±0.4
VSWR	—	15 - 100 MHz	Ratio	—	1.4:1	1.8:1
1 dB Compression	Output Power	15 - 100 MHz	dBm	23	27	—
Output IP <sub>2</sub>	Two-Tone inputs up to +10 dBm	15 - 100 MHz	dBm	55	65	—
Output IP <sub>3</sub>	Two-Tone inputs up to +10 dBm	15 - 100 MHz	dBm	40	46	—
Noise Figure	—	15 - 100 MHz	dB	—	3.0	5.0
Reverse Transmission	—	15 - 100 MHz	dB	—	-14	-13
+V	—	—	V	11.4	12.0	12.6
I <sub>bias</sub>	1.1 W Typical	—	mA	—	88	120

**High Intercept Amplifier,  
15 - 100 MHz**

**AM05-0006  
V2**

**S-Parameter Data**

Frequency (MHz)	S11 MAG/ANG	S21 dB/MAG/ANG	S12 dB/MAG/ANG	S22 MAG/ANG
5	0.0928/-30	9.63/3.03/-176	-14.28/0.19/175	0.11055/44
20	0.0576/-32	9.98/3.16/170	-14.02/0.20/170	0.0513/-20
35	0.0384/-22	10.13/3.21/158	-13.95/0.20/161	0.0453/-22
50	0.0323/-3	10.21/3.24/146	-14.05/0.20/151	0.0582/-21
65	0.0355/26	10.29/3.27/136	-14.27/0.19/141	0.0792/-27
80	0.0471/45	10.41/3.31/124	-14.61/0.19/133	0.1042/-37
95	0.0618/50	10.53/3.36/113	-15.03/0.18/124	0.1288/-49
110	0.0778/51	10.71/3.43/102	-15.54/0.17/115	0.1496/-61
125	0.0936/49	10.95/3.53/91	-16.19/0.16/107	0.1639/-74

**Pin Configuration**

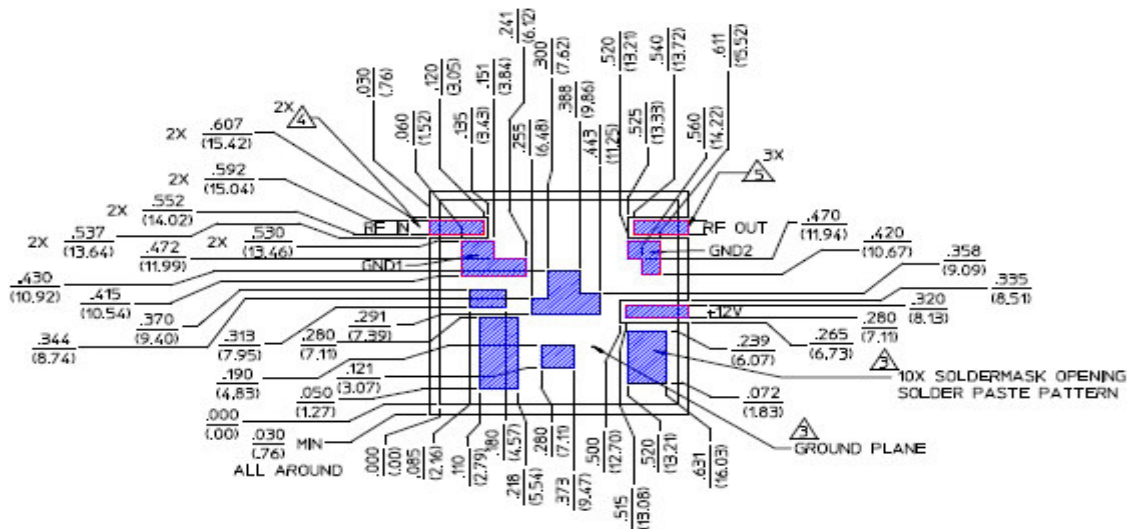
Pin No.	Function	Pin No.	Function
1	RF IN	6	V <sub>bias</sub>
2	GND 1	7	GND 2
3	GND	8	RF OUT
4	GND	9	GND
5	VDC	10	GND

**Absolute Maximum Ratings <sup>1</sup>**

Parameter	Absolute Maximum
Max. Input Power	+15 dBm
V <sub>bias</sub>	-0.5 to +14.0 V
Operating Temperature	-40°C to +85°C
Storage Temperature	-65°C to +125°C

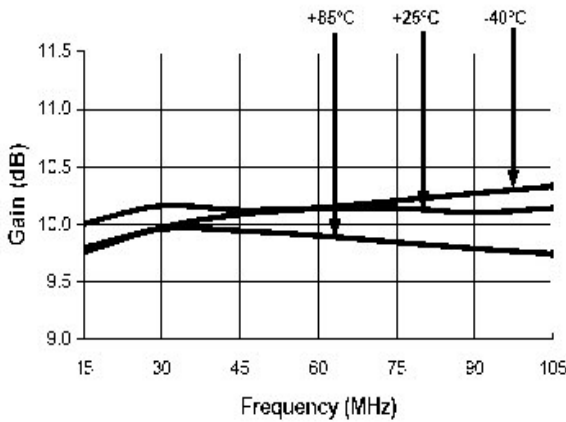
1. Operation of this device above any one of these parameters may cause permanent damage.

**Recommended Board Layout**

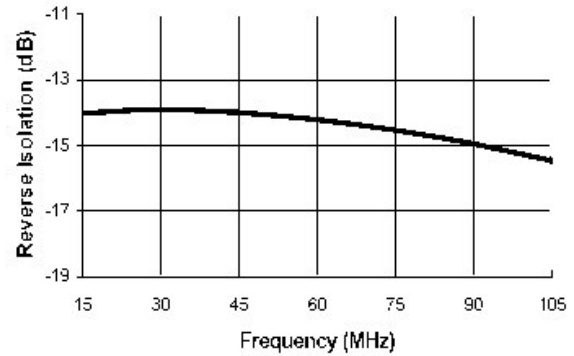


**Typical Performance Curves**

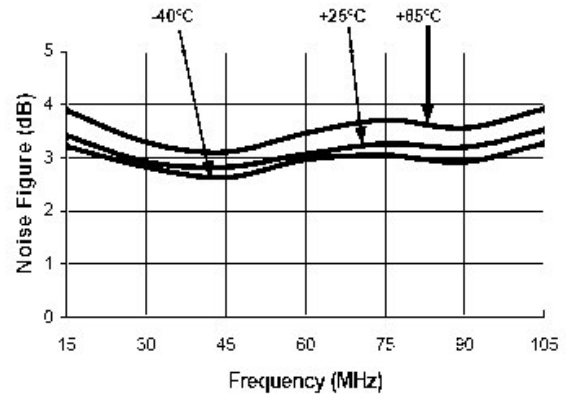
*Insertion Loss vs. Frequency*



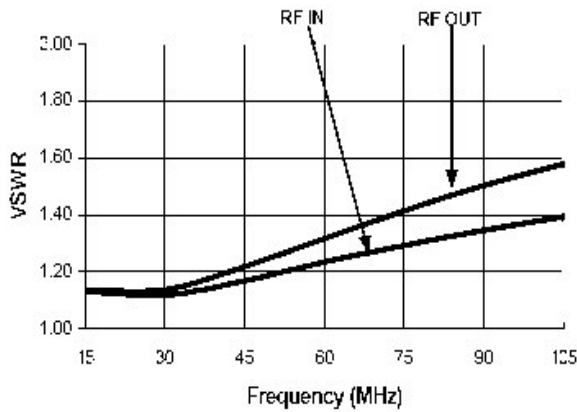
*Reverse Isolation vs. Frequency*



*Noise Figure vs. Frequency*



*VSWR vs. Frequency*



**Ordering Information**

Part Number	Package
AM05-0006	Bulk Packaging
AM05-0006TR	Tape and Reel (1K Reel)
AM05-0006-TB	Device provided on Test Board