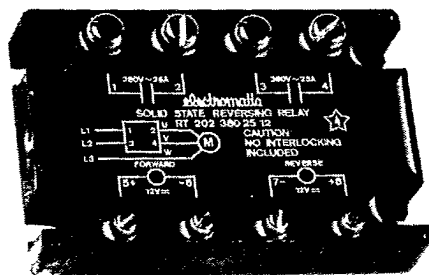


**RT 202 380 - XX - XX**

T-25-31



- Electronic reversing relay.
- Instant on switching.
- Inductive loads.
- Load current: 2 x 10 A, 25 A, 40 A.
- Line voltage: 12-420 VAC.
- Control voltage: 5, 12, 24 VDC.
- Output: 2 x 2 alternistors.
- Isolation: Reed relay (input-output) 4 KV/8 mm.

**SPECIFICATIONS**

Input	RT 202 380 - xx - 05	RT 202 380 - xx - 12	RT 202 380 - xx - 24	Output	RT 202 380 - 10 - xx	RT 202 380 - 25 - xx	RT 202 380 - 40 - xx
Control voltage range	5 VDC	12 VDC	24 VDC	Nominal line voltage	380 VAC <sub>RMS</sub>	380 VAC <sub>RMS</sub>	380 VAC <sub>RMS</sub>
Pick up voltage	Max. 4 VDC	Max. 10 VDC	Max. 20 VDC	Break down voltage	Min. 1200 V <sub>P</sub>	Min. 1200 V <sub>P</sub>	Min. 1200 V <sub>P</sub>
Drop out voltage	Min. 1 VDC	Min. 1 VDC	Min. 1 VDC	Leakage current	Max. 10 mA	Max. 10 mA	Max. 10 mA
Max. voltage	8 VDC	17 VDC	30 VDC	Critical di/dt off state	≥ 200 V/μs	≥ 200 V/μs	≥ 200 V/μs
Input current at nominal control voltage	60 mA	25 mA	14 mA	Frequency range	47-63 Hz	47-63 Hz	47-63 Hz
Input impedance	70 Ω	440 Ω	1.7 KΩ	Min. load current	0.2 A	0.2 A	0.2 A
Resp. time pick up	Max. 1 ms	Max. 1 ms	Max. 1 ms	Max. load current	10 A	25 A	40 A
Resp. time drop out	Max. 20 ms	Max. 20 ms	Max. 20 ms	Surge current - non repetitive			
				t=20 ms, f=50 Hz	100 A <sub>P</sub>	250 A <sub>P</sub>	350 A <sub>P</sub>
				I <sup>2</sup> t for fusing t=1 ms	40 A <sup>2</sup> s	265 A <sup>2</sup> s	610 A <sup>2</sup> s
				Critical di/dt	≥ 50 A/μs	≥ 100 A/μs	≥ 100 A/μs
				On state voltage	Max. 1.6 V	Max. 1.6 V	Max. 1.6 V
				Power factor	Min. 0.5	Min. 0.5	Min. 0.5

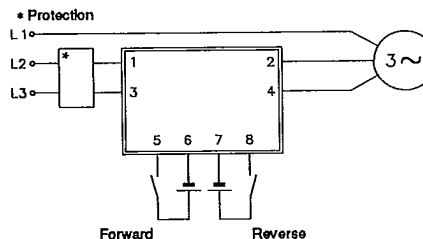
Isolation	RT 202 380 - xx - xx
Isolation voltage (input-output)	4000 VAC <sub>RMS</sub>
Isolation voltage (input-case)	4000 VAC <sub>RMS</sub>
Isolation voltage (output-case)	2500 VAC <sub>RMS</sub>
Isolation resistance (input-output)	10 <sup>10</sup> Ω
Capacitance (input-output)	25 pF
Capacitance (input-case)	50 pF
Capacitance (output-case)	150 pF
Creepage distance (input-output)	8 mm

Thermal data	RT 202 380 - 10 - xx	RT 202 380 - 25 - xx	RT 202 380 - 40 - xx
Ambient operating temperature		-20 to +80°C	-20 to +80°C
Storage temperature		-40 to +100°C	-40 to +100°C
Max. junction temperature		110°C	110°C
Thermal resistance (junction-case)	1.1°C/W	0.75°C/W	0.6°C/W

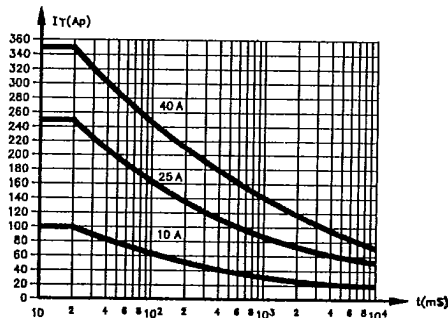
MECHANICAL DATA	RT 202 380 - xx - xx
Housing material/colour	Noryl/black
Bottom plate material	Tin-plated aluminium

**WIRING DIAGRAM**

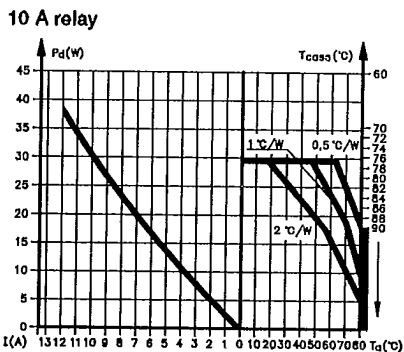
Attention: No Interlocking Included. Must be done externally.



**Non repetitive surge current curve**  
 The curve is only applicable in case of faults such as completely or partly short-circuited loads. The curve is *not* applicable for normal operation.



**Derating curves**  
 Thermally conducting paste must be applied between relay and heatsink



**K**

