

PLEASE CHECK WWW.MOLEX.COM FOR LATEST PART INFORMATION

Part Number: **0008701043**
Status: **Active**
Description: Crimp Terminal 5394, AWG#22-#28, Reel

Documents:

[Drawing \(PDF\)](#) [RoHS Certificate of Compliance \(PDF\)](#)
[Product Specification PS-5395-001 \(PDF\)](#)

General

Product Family	Crimp Terminals
Series	5394
Crimp Quality Equipment	Yes
Product Name	Board-In

Physical

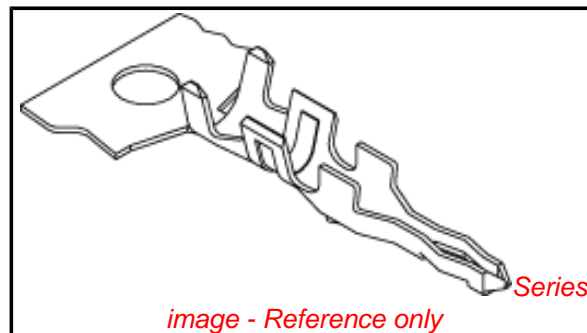
Gender	Male
Material - Metal	Brass
Material - Plating Mating	Tin
Material - Plating Termination	Tin
Packaging Type	Reel
Plating min: Mating (µin)	35
Plating min: Mating (µm)	0.88
Plating min: Termination (µin)	35
Plating min: Termination (µm)	0.88
Termination Interface: Style	Crimp or Compression
Wire Insulation Diameter	1.20-1.90mm (.047-.075")
Wire Size AWG	22, 24, 26, 28
Wire Size mm ²	N/A

Material Info

Old Part Number	5394T
-----------------	-------

Reference - Drawing Numbers

Product Specification	PS-5395-001
Sales Drawing	SD-5394*



EU RoHS

**ELV and RoHS
Compliant**

REACH SVHC

Contains SVHC: No

Halogen-Free

Status

Halogen-Free

China RoHS



**Need more information on product
environmental compliance?**

Email productcompliance@molex.com
 For a multiple part number RoHS Certificate of
 Compliance, [click here](#)

Please visit the [Contact Us](#) section for any
 non-product compliance questions.

Search Parts in this Series

5394Series

Use With

5395 Board-In Housing

Application Tooling | FAQ

*Tooling specifications and manuals are
 found by selecting the products below.
 Crimp Height Specifications are then
 contained in the Application Tooling
 Specification document.*

Global

Description	Product #
Terminator Die	0011402071

Japan

Description	Product #
Applicator for M211A Bench Press, 22-28 AWG, for 5394 Crimp Terminal	0011260108

10 9 8 7 6 5 4 3 2 1

F

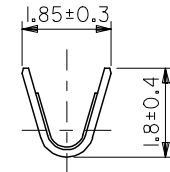
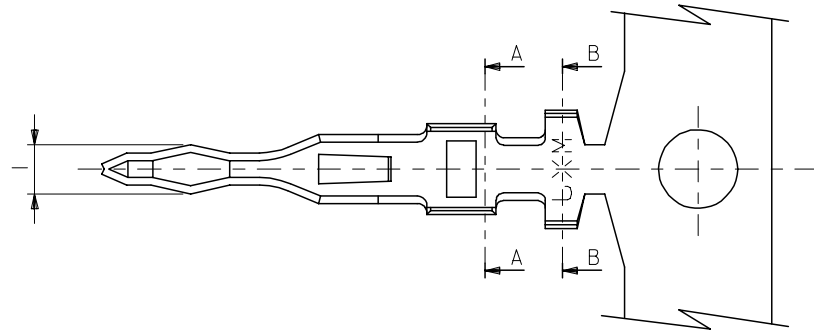
E

D

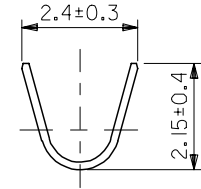
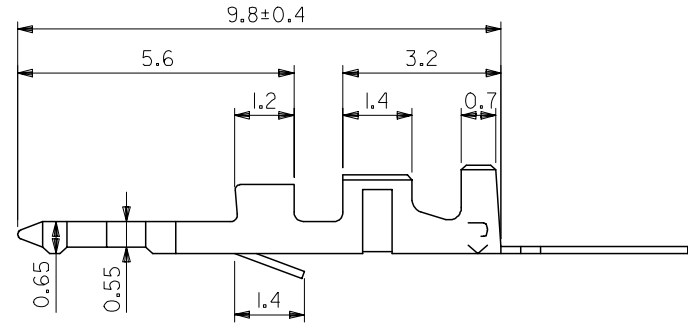
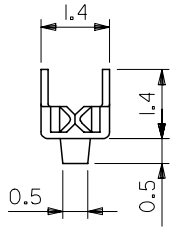
C

B

A



断面A-A
SECT. A-A



断面B-B
SECT. B-B

注)
NOTE.

1. 適合ハウジング: 5395-N
HOUSING:5395-N

08-70-1044	5394TL	バラ状 LOOSE
08-70-1043	5394T	連鎖状 CHAIN
EDP.NO.	ENG.NO.	形状 FORM

REVISED EC NO: J2005-0061 DRAWN: TANAKA 2005/02/03 CHKD: NUKITA 2005/02/04 APPR: NUKITA 2005/02/10	GENERAL TOLERANCES (UNLESS SPECIFIED)		DIMENSION STYLE	SCALE	DESIGN UNITS	THIRD ANGLE PROJECTION
			MM ONLY	10:1	METRIC	
	10 UNDER	±0.2	DRAWN BY	DATE	TITLE	
	10 OVER 30 UNDER	±0.25	KKOHAMA	2000/03/28	BOARD IN CONN. MINI. CRIMP PIN	
	30 OVER	±0.3	CHECKED BY	DATE		
ANGULAR	±3 °	TYAMAGUC	2000/03/30			
DRAFT WHERE APPLICABLE MUST REMAIN WITHIN DIMENSIONS		APPROVED BY	DATE	MOLEX INCORPORATED		
		MFUKUSHI	2000/03/30	DOCUMENT NO. SD-5394*		
		MATERIAL NO.			SHEET NO. 1 OF 1	
		SIZE	THIS DRAWING CONTAINS INFORMATION THAT IS PROPRIETARY TO MOLEX INCORPORATED AND SHOULD NOT BE USED WITHOUT WRITTEN PERMISSION			
		A3				

MATERIAL
黄銅 (錫メッキ) t:0.15
PRE-TINNED BRASS t:0.15