

**PLEASE CHECK WWW.MOLEX.COM FOR LATEST PART INFORMATION**

**Part Number:** [0014562021](#)  
**Status:** **Active**  
**Overview:** [cgrid\\_sl\\_products](#)  
**Description:** 2.54mm (.100") Pitch SL™ Insulation Displacement Connector Assembly, Female, Single Row, Version A, Nonpolarized, Wire Size 24, 0.38µm (15µ") Gold (Au), 2 Circuits

**Documents:**

[3D Model](#) [Product Specification PS-70400 \(PDF\)](#)  
[Drawing \(PDF\)](#) [RoHS Certificate of Compliance \(PDF\)](#)  
[Product Specification PS-46543-001 \(PDF\)](#)

**Agency Certification**

CSA LR19980  
 UL E29179

**General**

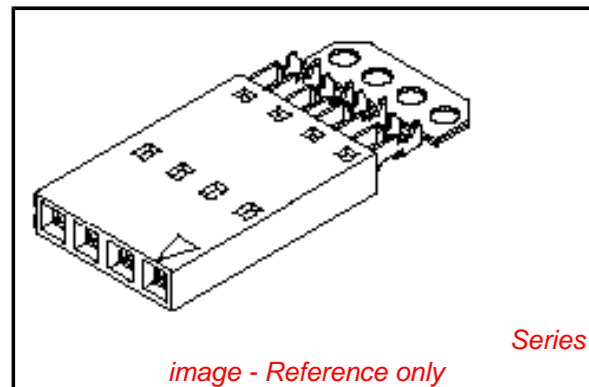
Product Family Ribbon Cable / Wire Trap Connectors  
 Series [70400](#)  
 Comments Terminals Preloaded  
 Component Type Housing  
 Glow-Wire Compliant No  
 Overview [cgrid\\_sl\\_products](#)  
 Product Name SL™

**Physical**

Circuits (Loaded) 2  
 Color - Resin Black  
 Durability (mating cycles max) 50  
 Entry Angle Vertical  
 Flammability 94V-0  
 Lock to Mating Part None  
 Material - Metal Phosphor Bronze  
 Material - Plating Mating Gold  
 Material - Plating Termination Tin  
 Material - Resin Polyester Alloy  
 Number of Rows 1  
 PCB Retention None  
 Packaging Type Tube  
 Pitch - Mating Interface (in) 0.100 In  
 Pitch - Mating Interface (mm) 2.54 mm  
 Plating min: Mating (µin) 15  
 Plating min: Mating (µm) 0.375  
 Plating min: Termination (µin) 75  
 Plating min: Termination (µm) 1.875  
 Polarized to Mating Part No  
 Stackable Yes  
 Surface Mount Compatible (SMC) N/A  
 Temperature Range - Operating -40°C to +105°C  
 Termination Interface: Style IDT or Pierce  
 Wire Insulation Diameter 1.35mm (.053") max.  
 Wire Size AWG 24  
 Wire/Cable Type Discrete Wire, Ribbon Cable

**Electrical**

Current - Maximum per Contact 3A  
 Voltage - Maximum 250V



**EU RoHS**

**ELV and RoHS  
 Compliant**  
**REACH SVHC  
 Not Reviewed**  
**Halogen-Free  
 Status**

**China RoHS**



**Need more information on product  
 environmental compliance?**

Email [productcompliance@molex.com](mailto:productcompliance@molex.com)  
 For a multiple part number RoHS Certificate of Compliance, [click here](#)

Please visit the [Contact Us](#) section for any non-product compliance questions.

**Search Parts in this Series**

[70400Series](#)

**Mates With**

Single Row headers and housings, [8624](#) , [70203](#) , [42375](#) , [42377](#)

**Use With**

[7307](#) Tinned 28AWG, [7767](#) Topcoat 28AWG, [24241](#) Tinned 26AWG, [8996](#) Topcoat 26AWG, [24226](#) Tinned 24AWG, [8997](#) Topcoat 24AWG, [24369](#) High Flex 26AWG, [24389](#) High Flex 24AWG

**Application Tooling | FAQ**

*Tooling specifications and manuals are found by selecting the products below. Crimp Height Specifications are then contained in the Application Tooling Specification document.*

**Global**

Description	Product #
Hawk Semi- Automatic Discrete	<a href="#">0011201337</a>

**Material Info**

Old Part Number

704000526

**Reference - Drawing Numbers**

Product Specification

PS-46543-001, PS-70400

Sales Drawing

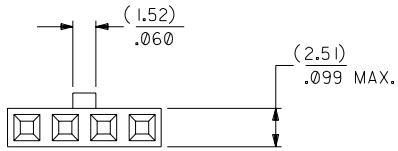
DSD70400-DGN, SD-70400-010,  
SDA-70400-0526-0549

Wire Terminator for SL - Rebuilt US*	
Hawk™ Ribbon	<u>0623003000</u>
Cable Terminator for SL without Break-off	
Hawk™ Semi- Automatic Discrete	<u>0623004900</u>
Wire Terminator for SL - Rebuilt CE Approved*	
Hawk™ Flat Flex	<u>0623005200</u>
Cable Terminator for SL with Break-off	
Hawk™ Ribbon	<u>0623005300</u>
Cable Terminator with for SL Break-off	
IDT Discrete	<u>0621000700</u>
Handtool Module for SL™	
Hawk™ Semi- Automatic Discrete	<u>0623003100</u>
Wire Terminator for SL	

This document was generated on 05/20/2010

**PLEASE CHECK [WWW.MOLEX.COM](http://WWW.MOLEX.COM) FOR LATEST PART INFORMATION**

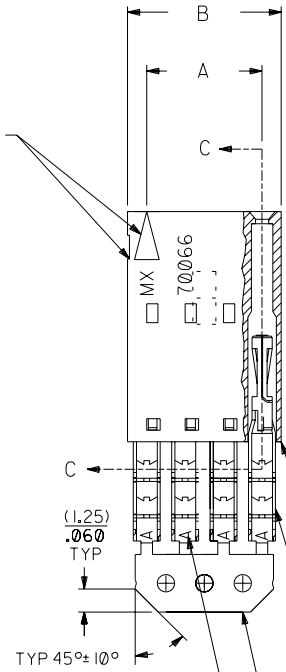
# OPTION E



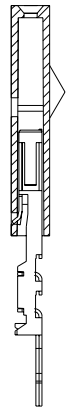
## NOTES:

- 1) TO BE USED WITH (24) AWG. STRANDED WIRE WITH (1.35)/.053 DIA. MAX. INSULATION.
- 2) SEE CHART FOR CIRCUIT SIZES.
- 3) STANDARD PACKAGING PER PK-70400-0001. OPTIONAL PACKAGING MAY BE AVAILABLE, REQUEST DWG. PK-70400
- 4) PARTS STACKABLE END TO END ON (2.54)/.100 CENTERS.
- 5) REFER TO PRODUCT SPECIFICATION: PS-70400.
- 6) SEE DWG. SDA-70400-\*\*\*\* (SHT. 5) FOR OPTIONAL HOUSING DETAILS.
- 7) 4 CIRCUIT SHOWN.
- 8) TO MATE WITH MOLEX PART NO.'S.: A-70390-\*\*\*\*, A-70392-\*\*\*\*, A-70374-\*\*\*\*, A-70376-\*\*\*\*, A-70542-\*\*\*\*, A-70552-\*\*\*\*, A-70544-\*\*\*\*, A-70554-\*\*\*\*, A-70546-\*\*\*\*, A-70556-\*\*\*\*, A-70558-\*\*\*\*.
- 9) 2 CIRCUIT ASSEMBLIES SUPPLIED AS GROUPED PAIRS.

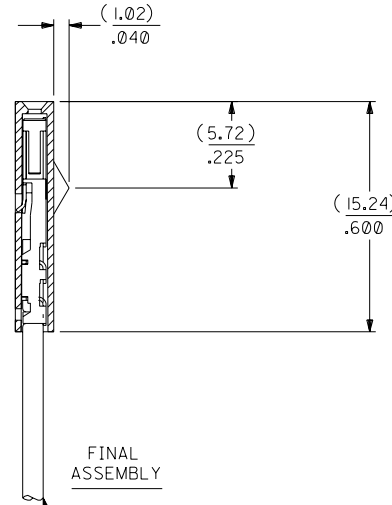
CIRCUIT NO. 1  
SLOT OR ARROW



## SECTION C-C



PRE-LOADED ASSEMBLY



FINAL ASSEMBLY

WIRE (SEE NOTE 1)

HOUSING PART NO. 70066-\*\*\*\*  
MATERIAL: G.F. POLYESTER, 94V-0

TERMINAL PART NO. 70028-\*\*\*\*  
MATERIAL: PHOSPHOR BRONZE  
PLATING PER ES-88-\*\*\*

TIN - .000150 MIN. TIN OVER  
.000050 MIN. NICKEL PLATE.

### I.D. SLOT CODE TO WIRE GAUGE CHART

I.D. SLOT CODE	WIRE GAUGE
A	24 AWG.

### PLATING CODE (STRIPE ON CARRIER STRIP)

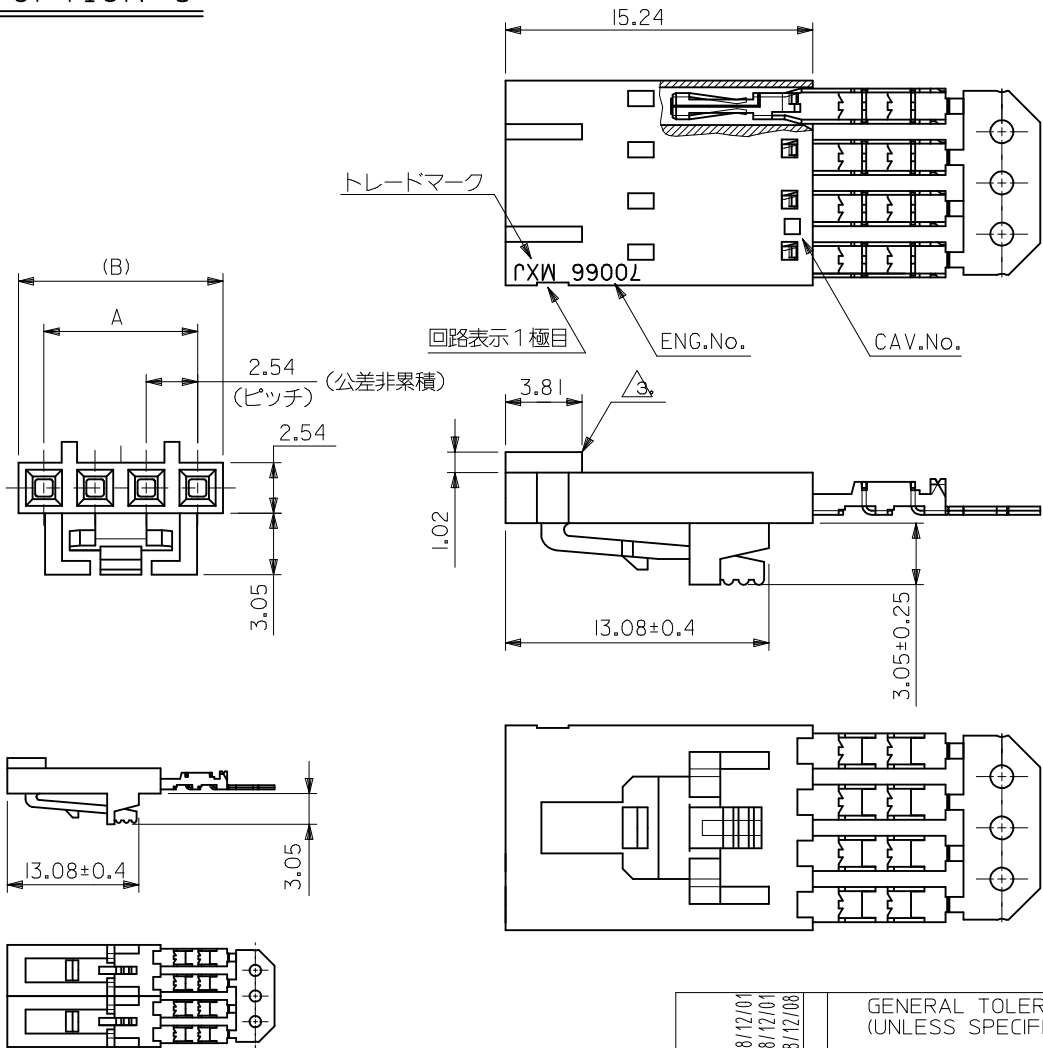
PLATING	COLOR
TIN	NONE

\*THE PRIMARY SHIPPING CARTON WILL BE LABELED "COMPLIANT TO ROHS DIRECTIVE 2002/95/EC AND ELV ANNEX II OF DIRECTIVE 2000/53/EC". CARTONS WITHOUT THIS LABEL MAY CONTAIN PRODUCT WITH LEAD.

CKT. SIZE	DIMENSIONS (INCH)		EDP. NO.	ENG. NO.
	A	B		
2	( 2.54 ) .100	( 5.05 ) .199		
3	( 5.08 ) .200	( 7.59 ) .299		
4	( 7.62 ) .300	( 10.13 ) .399		
5	( 10.16 ) .400	( 12.67 ) .499		
6	( 12.70 ) .500	( 15.21 ) .599		
7	( 15.24 ) .600	( 17.75 ) .699		
8	( 17.78 ) .700	( 20.29 ) .799		
9	( 20.32 ) .800	( 22.83 ) .899		
10	( 22.86 ) .900	( 25.37 ) .999		
11	( 25.54 ) 1.000	( 27.91 ) 1.099		
12	( 27.94 ) 1.100	( 30.45 ) 1.199		
13	( 30.48 ) 1.200	( 32.99 ) 1.299		
14	( 33.02 ) 1.300	( 35.53 ) 1.399		
15	( 35.56 ) 1.400	( 38.07 ) 1.499		
16	( 38.01 ) 1.500	( 40.61 ) 1.599		
17	( 40.64 ) 1.600	( 43.15 ) 1.699		
18	( 43.18 ) 1.700	( 45.69 ) 1.799		
19	( 45.72 ) 1.800	( 48.23 ) 1.899		
20	( 48.26 ) 1.900	( 50.77 ) 1.999		
21	( 50.80 ) 2.000	( 53.31 ) 2.099		
22	( 53.34 ) 2.100	( 55.85 ) 2.199		
23	( 55.88 ) 2.200	( 58.39 ) 2.299		
24	( 58.42 ) 2.300	( 60.93 ) 2.399		
25	( 60.96 ) 2.400	( 63.47 ) 2.499		

DIMENSIONS SHOWN (METRIC) INCH UNLESS OTHERWISE SPECIFIED TOLERANCES: ANGULAR ± 1/2°		MFG. SH. REV.	
3 PLACE ± .010 --- 2 PLACE ± .014 ± 0.25 1 PLACE --- ± 0.35		REVISE ONLY ON CAD SYSTEM	
DRAFT WHERE APPLICABLE MUST REMAIN WITHIN DIMENSIONS		TITLE ASSEMBLY, SL CONNECTOR (SINGLE ROW- (2.54)/.100 GRID)	
DRWG. BY: [ ] CHK'D. BY: [ ] APP'D. BY: [ ] SCALE: 4:1		MOLEX INCORPORATED SHEET NO. [ ] DATE [ ] / [ ] / [ ] LITSE, ILL. 60532 U.S.A.	
L.T.R. REVISIONS L.T.R. REVISIONS		PART NO. [ ] DRWG. NO. [ ]	
		FILE NAME [ ] THIS DRAWING CONTAINS INFORMATION THAT IS PROPRIETARY TO MOLEX INC. AND SHOULD NOT BE USED WITHOUT WRITTEN PERMISSION. DIV. DA SIZE C	

OPTION G



2極の場合  
(SCALE:2-1)

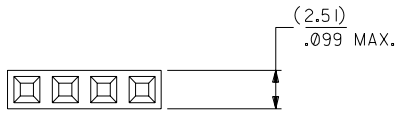
注記:

1. 材料  
ハウジング: ガラス入りポリエステル UL 94V-0  
ターミナル: 燐青銅
2. 仕上げ  
接点部 : 金メッキ 0.38 μm MIN.  
圧接部 : 錫メッキ 1.91 μm MIN.  
下地メッキ: ニッケルメッキ 1.27 μm MIN.
3. 極性リブは、2極及び3極の場合1箇所のみとする。  
但し3極の場合のリブは、1極目と2極目の間とする。
4. 適合オスコネクター: 70107-\*\*\*\*, 70018-\*\*\*\*
5. 適合ヘッダー: 70389-\*\*\*\*, 70391-\*\*\*\*
6. ハウジングの色: 黒

60.96	58.42	70400-0688	24
58.42	55.88	70400-0687	23
48.26	45.72	70400-0683	19
40.64	38.10	70400-0680	16
38.10	35.56	70400-0679	15
35.56	33.02	70400-0678	14
33.02	30.48	70400-0677	13
27.94	25.40	70400-0675	11
25.40	22.86	70400-0674	10
22.86	20.32	70400-0673	9
(B)	A	MATERIAL No.	極数

REVISED EC NO: J2009-0453 DRWN: YOSHIDAM 2008/12/01 CHKD: THARUYAMA 2008/12/01 APPR: NUKITA 2008/12/08	GENERAL TOLERANCES (UNLESS SPECIFIED)		DIMENSION STYLE MM ONLY		SCALE 4:1		DESIGN UNITS METRIC		THIRD ANGLE PROJECTION		
	10 UNDER	±0.2	DRAWN BY	DATE	TITLE						
	10 OVER 30 UNDER	±0.25	T. FURUHATA	'87/11/17	2.54 SINGLE ROW ASSY FEMALE I.D.CONN OPTION G -LEAD FREE- MOLEX INCORPORATED						
	30 OVER	±0.3	M. SASAO	DATE							
ANGULAR	±3 °	APPROVED BY	DATE	DOCUMENT NO.		SHEET NO.		SEE TABLE SD-70400-010 1 OF 1			
DRAFT WHERE APPLICABLE MUST REMAIN WITHIN DIMENSIONS		S. YAMADA	DATE	MATERIAL NO.		1 OF 1					
REV	DESCRIPTION	THIS DRAWING CONTAINS INFORMATION THAT IS PROPRIETARY TO MOLEX INCORPORATED AND SHOULD NOT BE USED WITHOUT WRITTEN PERMISSION									

# OPTION A

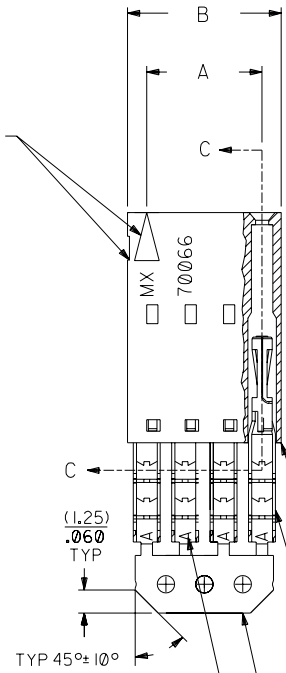


## NOTES:

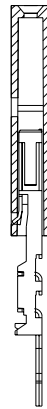
- 1) TO BE USED WITH (24) AWG. STRANDED WIRE WITH (1.35)/.053 DIA. MAX. INSULATION.
- 2) SEE CHART FOR CIRCUIT SIZES.
- 3) STANDARD PACKAGING PER PK-70873-0001. OPTIONAL PACKAGING MAY BE AVAILABLE, REQUEST DWG. PK-70400
- 4) PARTS STACKABLE END TO END AND SIDE BY SIDE ON (2.54)/.100 CENTERS.
- 5) REFER TO PRODUCT SPECIFICATION: PS-70400.
- 6) SEE DWG. SDA-70400-\*\*\*\* (SHT. 5) FOR OPTIONAL HOUSING DETAILS.
- 7) 4 CIRCUIT SHOWN.
- 8) TO MATE WITH MOLEX (2.54)/.100 CENTERLINE HEADERS.

9) 2 CIRCUIT ASSEMBLIES SUPPLIED AS GROUPED PAIRS.

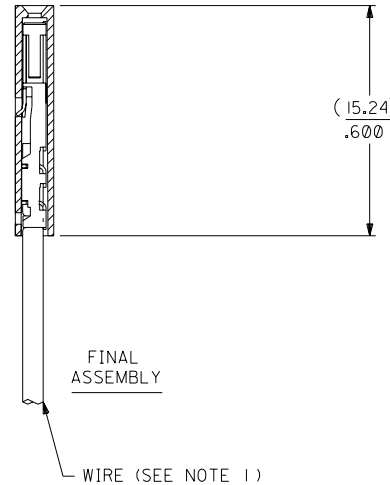
CIRCUIT NO. 1  
SLOT OR ARROW



## SECTION C-C



PRE-LOADED ASSEMBLY



FINAL ASSEMBLY

HOUSING PART NO. 70066-\*\*\*\*  
MATERIAL: G.F. POLYESTER, 94V-0

TERMINAL PART NO. 70028-\*\*\*\*  
MATERIAL: PHOSPHOR BRONZE  
PLATING PER ES-88-\*\*\*

15 GOLD - .000015 MIN. GOLD IN SELECT AREA WITH .000075 MIN. TIN IN SELECT AREA OVER .000050 MIN. NICKEL OVER-ALL.

\*THE PRIMARY SHIPPING CARTON WILL BE LABELED "COMPLIANT TO ROHS DIRECTIVE 2002/95/EC AND ELV ANNEX II OF DIRECTIVE 2000/53/EC". CARTONS WITHOUT THIS LABEL MAY CONTAIN PRODUCT WITH LEAD.

I.D. SLOT CODE TO WIRE GAUGE CHART	
I.D. SLOT CODE	WIRE GAUGE
A	24 AWG.

PLATING CODE (STRIPE ON CARRIER STRIP)	
PLATING	COLOR
15 GOLD	YELLOW

CKT. SIZE	DIMENSIONS (INCH)		EDP. NO.	ENG. NO.
	A	B		
2	( 2.54 ) .100	( 5.05 ) .199	14-56-2021	A-70400-0526
3	( 5.08 ) .200	( 7.59 ) .299	14-56-2031	A-70400-0527
4	( 7.62 ) .300	( 10.13 ) .399	14-56-2041	A-70400-0528
5	( 10.16 ) .400	( 12.67 ) .499	14-56-2051	A-70400-0529
6	( 12.70 ) .500	( 15.21 ) .599	14-56-2061	A-70400-0530
7	( 15.24 ) .600	( 17.75 ) .699	14-56-2071	A-70400-0531
8	( 17.78 ) .700	( 20.29 ) .799	14-56-2081	A-70400-0532
9	( 20.32 ) .800	( 22.83 ) .899	14-56-2091	A-70400-0533
10	( 22.86 ) .900	( 25.37 ) .999	14-56-2101	A-70400-0534
11	( 25.54 ) 1.000	( 27.91 ) 1.099	14-56-2111	A-70400-0535
12	( 27.94 ) 1.100	( 30.45 ) 1.199	14-56-2121	A-70400-0536
13	( 30.48 ) 1.200	( 32.99 ) 1.299	14-56-2131	A-70400-0537
14	( 33.02 ) 1.300	( 35.53 ) 1.399	14-56-2141	A-70400-0538
15	( 35.56 ) 1.400	( 38.07 ) 1.499	14-56-2151	A-70400-0539
16	( 38.01 ) 1.500	( 40.61 ) 1.599	14-56-2161	A-70400-0540
17	( 40.64 ) 1.600	( 43.15 ) 1.699	14-56-2171	A-70400-0541
18	( 43.18 ) 1.700	( 45.69 ) 1.799	14-56-2181	A-70400-0542
19	( 45.72 ) 1.800	( 48.23 ) 1.899	14-56-2191	A-70400-0543
20	( 48.26 ) 1.900	( 50.77 ) 1.999	14-56-2201	A-70400-0544
21	( 50.80 ) 2.000	( 53.31 ) 2.099	14-56-2211	A-70400-0545
22	( 53.34 ) 2.100	( 55.85 ) 2.199	14-56-2221	A-70400-0546
23	( 55.88 ) 2.200	( 58.39 ) 2.299	14-56-2231	A-70400-0547
24	( 58.42 ) 2.300	( 60.93 ) 2.399	14-56-2241	A-70400-0548
25	( 60.96 ) 2.400	( 63.47 ) 2.499	14-56-2251	A-70400-0549

REV.	DATE	DESCRIPTION	BY	CHK'D.
E		REVISED PER ECR NO. U82110 10-17-88 AAB		
F		LEAD FREE UCP2004-1769 RWHITE 04/03/17		
D		REVISE PER ECR #U80110 2/3/88 MJM		
EI		ADD CARRIER CHAMF ECR# 8842 05/20/98 LMCGRATH		
C		REDRAWN ON CAD ECR# 8842 5/8/86 W.Z.		
LTR.		REVISIONS	LTR.	REVISIONS

DIMENSIONS SHOWN (METRIC) INCH	
UNLESS OTHERWISE SPECIFIED TOLERANCES: ANGULAR ± 1/2°	
3 PLACE	± .010
2 PLACE	± .014 ± 0.25
1 PLACE	± 0.35

MFG. SH. REV.		REVISE ONLY ON CAD SYSTEM	
TITLE ASSEMBLY, SL CONNECTOR (SINGLE ROW- (2.54)/.100 GRID)			
MOLEX INCORPORATED LITSE, ILL. 60532 U.S.A.		SHEET NO.	DATE
PART NO. SDA-70400-0526-0549		10/09/84	
SEE CHART			
FILE NAME S70400AX4	THIS DRAWING CONTAINS INFORMATION THAT IS PROPRIETARY TO MOLEX INC. AND SHOULD NOT BE USED WITHOUT WRITTEN PERMISSION.		DIV. SIZE DA C