

DELTA CONNETOR SPECIFICATION

SCOPE : This specification details the requirements for a multipurpose socket connector having .0545" (1.384 mm)x .112" (2.84 mm) contact spacing transition between round conductor flat cable on .050" (1.27 mm) centers and a plug connector having similar spacing

UL FILE NO. : E 68080
CSA FILE NO.: LR 40971

SPECIFICATIONS:

PHYSICAL

INSULATOR MATERIAL	Glass reinforced polyester Flammability rating:UL 94V-0
COLOR	Grey
MARKING	Raised figures; 3M logo; part identification/date code number;contact position number
SHELL MATERIAL	Steel
PLATING	Tin
CONTACT MATERIAL	Copper alloy
PLATING	Selective gold in functional area over nickel
WIRE ACCOMMODATION	26 AWG solid or stranded 28 AWG solid or stranded
THREADED INSERT PUSH OUT FORCE	50 N min

ELECTRICAL

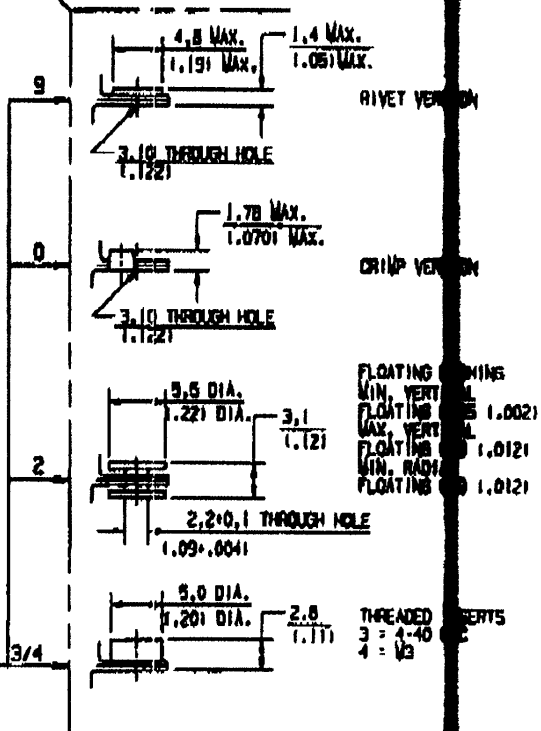
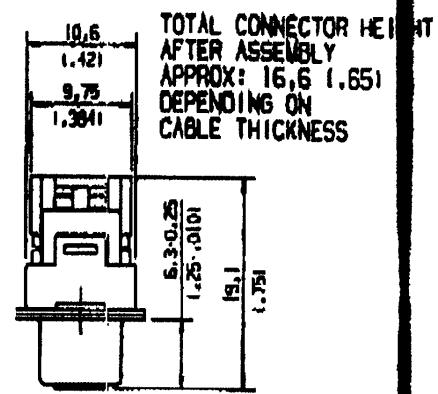
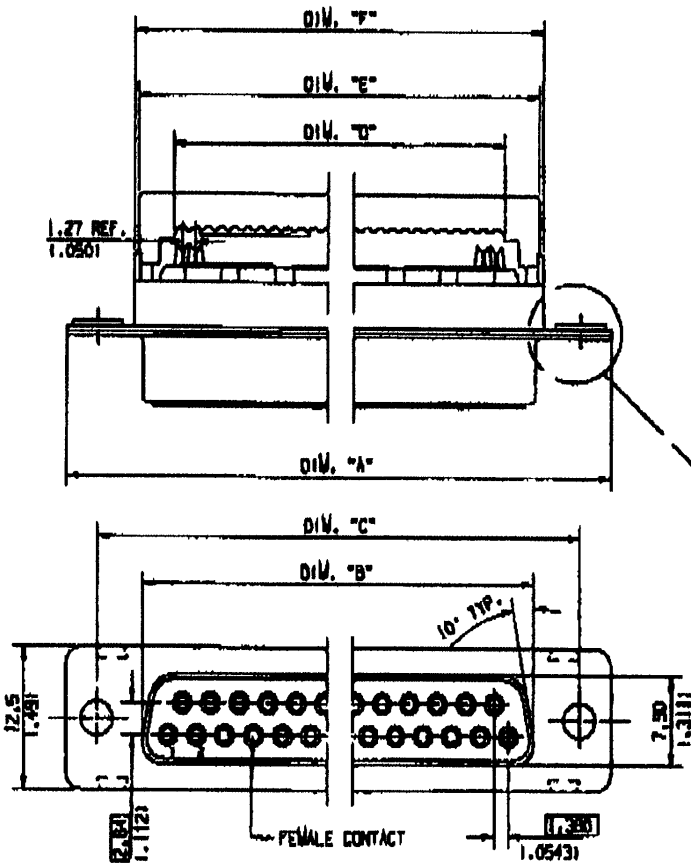
CURRENT RATING	1A
INSULATING RESISTANCE	$>1 \times 10^9 \Omega$ @ 500 vdc
WITHSTANDING VOLTAGE	1000 VRMS @ Sea Level

ENVIRONMENTAL

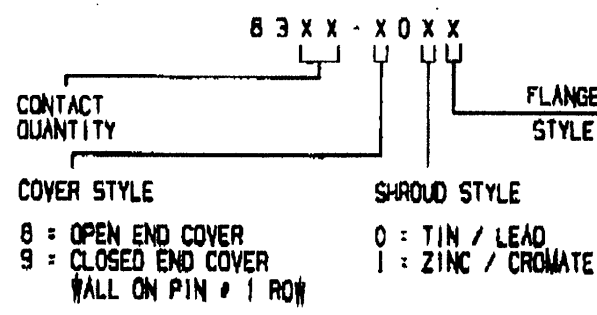
TEMPERATURE RATING	-67 °F to +221 °F (-55 °C to +105 °C)
--------------------	--

CS 4224 Sheet 2/2 Issue B

CONTACT QUANTITY	SM PART NUMBER	DIM. "A" • 0 mm • 0.76 mm	DIM. "B" • 0.10 mm • 0.10 mm	DIM. "C" • 0.10 mm • 0.10 mm	DIM. "D" • 0.10 mm • 0.10 mm	DIM. "E" • 0.10 mm • 0.10 mm	DIM. "F" • 0.25 mm • 0.25 mm
9	8309-XXXX	31,19(1.228)	16,30(.641)	25,00(.984)	11,75(.462)	16,30(.655)	17,81(.70)
15	8315-XXXX	39,52(1.556)	24,70(.972)	33,30(1.311)	19,40(.763)	25,20(.992)	26,11(1.03)
25	8325-XXXX	53,42(2.103)	38,40(1.511)	47,00(1.850)	32,20(1.267)	39,00(1.535)	39,81(1.57)
37	8337-XXXX	69,70(2.744)	54,80(2.157)	63,50(2.500)	47,50(1.874)	55,50(2.185)	56,31(2.22)



ORDERING INFORMATION



- COVER STYLE SHROUD STYLE
- 8 = OPEN END COVER 0 = TIN / LEAD
- 9 = CLOSED END COVER 1 = ZINC / CHROMATE
- WALL ON PIN = 1 ROW

IMPORTANT NOTICE TO PURCHASER: ALL STATEMENTS TECHNICAL INFORMATION AND RECOMMENDATIONS CONTAINED HEREIN ARE BASED ON TESTS WE BELIEVE TO BE RELIABLE BUT THE ACCURACY OR COMPLETENESS THEREOF IS NOT GUARANTEED, AND THE FOLLOWING IS MADE IN LIEU OF ALL WARRANTIES, EXPRESS OR IMPLIED.

SELLER'S AND MANUFACTURER'S ONLY OBLIGATION SHALL BE TO REPLACE SUCH QUANTITY OF THE PRODUCT PROVED TO BE DEFECTIVE. NEITHER SELLER NOR MANUFACTURER SHALL BE LIABLE FOR ANY INJURY, LOSS OR DAMAGE, DIRECT OR CONSEQUENTIAL, ARISING OUT OF THE USE OF OR THE INABILITY TO USE THE PRODUCT. BEFORE USING, USER SHALL DETERMINE THE SUITABILITY OF THE PRODUCT FOR HIS INTENDED USE, AND USER ASSUMES ALL RISK AND LIABILITY WHATSOEVER IN CONNECTION THEREWITH. NO STATEMENT OF RECOMMENDATION NOT CONTAINED HEREIN SHALL HAVE ANY FORCE OR EFFECT UNTIL IN A DOCUMENT SIGNED BY OFFICERS OF SELLER AND MANUFACTURER.

Electronic Products Division

3M

TOLERANCE UNLESS NOTED			MM (INCH)
MM	.0	.000	
MM	± .25	± .10	DR. SP. JCKER

B	OCTOBER 10, 1996		
ISSUE	ISSUE DATE	REV.	CH.
D - SUB CONNECTOR FEMALE PREASSEMBLED			
05 4225			SHEET 1/2