

**CAUTION****General warnings**

Recommended by the ANIE (National Association of Electrotechnical and Electronic Industries) member manufacturers.

N.B. This device was carefully manufactured. Its mechanical and electrical dependability and durability will be more efficient it used correctly and if maintenance is regularly by carried out.

- Read the instructions in this booklet carefully as they give important notice on the correct installation, use and maintenance of the appliance. Keep this booklet in a safe place so that it will be available for future reference.
- After removing the packing check that the appliance has not been damaged in transit. Seek advice from a suitably qualified person or Vortice Ltd. Packing materials (plastic bags, polystyrene foam, nails etc.) must be kept away from children as they could cause harm.
- Before connecting the appliance to the mains supply ensure that the rating label specifications correspond to your electrical supply. (The rating label is to be found close to the power cable entrance).
- Ensure that the socket outlet to be used matches the plug on the mains lead extension leads where not essential. Where this is unavoidable you must firstly ensure that the wiring will be suitable for the total loading of the equipment to be fitted to it at any one time. Also the current carrying capacity of any adaptor must be confirmed to be adequate.
- This appliance must only be used for the purpose for which it was designed, i.e. for ventilation.
All other uses must be considered to be potentially dangerous. Vortice Ltd cannot be held responsible for any damage caused by improper, incorrect or unreasonable use.
- The safe use of any electrical appliance involves the observing of certain basic rules, in particular:
 - do not touch the appliance with wet or moist hands or feet.
 - do not use the appliance with bare feet.
 - do not use extension leads in bathrooms or shower areas.
 - do not pull the plug from the power socket by the mains lead of the appliance itself.
 - do not leave the appliance where it is exposed to adverse elements such as rain, salt etc. (unless this is specifically provided for).
 - do not let young children, aged or infirm persons use the device without supervision.
- Before beginning any cleaning or maintenance operations disconnect the appliance from the electrical supply by taking out the plug or switching off the appliance isolation switch.
- In case of a fault and/or malfunction of the appliance, switch it off but do not attempt to rectify. Seek advice from a suitably qualified person or Vortice Ltd. If repair is necessary contact Vortice Ltd or your local Service Agent. If any other Service Agency is employed insist that only Vortice spare parts must be used. If the above action is not carried out the safety of the appliance could be jeopardized.
- Should it be decided not to use this appliance any longer it should be removed from the electrical supply and rendered inoperative. It is recommended to make harmless those parts of the appliance which could be harmful, especially to children who might play with the disused appliance.
- The installation must conform to the requirements of the latest issue of the I.E.E. wiring regulations.
- Do not install in a room the fan will be exposed to a temperature in excess of 40 (104° F).

Special General Warnings





- The appliance is provided with double insulation (Class 2) and needs no earthing.

- To avoid dangerous overheating it is advisable to fully uncoil the mains lead and not bundle it together.
- Do not leave the appliance plugged in unnecessarily.
- If the mains lead becomes damaged replace it promptly with the mains lead. Type: HO5VVF 2.5A 2x0.5 lenght 1800 IMQ.
- The mains lead of this appliance must not be replaced by the user. In the event of damage to the mains lead, or of the need for replacement, contact Vortice Ltd or our recommended Service Agent.

Important

- In case the appliance drops to the ground or is hardly struck it may be damaged even if such damages are not visible and it may become dangerous, therefore please do not use it and apply to a Vortice Representative for a control.

Operating instructions

- Unwind the power cable from under the equipment and plug it into a power outlet (see fig. 2) (check the data on the plate).
- Place the equipment on the floor or on a table in the desired position.
- Select the speed with knob A) (see fig. 3), turning the index to the symbols , , , 1st, 2nd and 3rd, speed.
- If required, start the rotating movement of the front grille by turning knob B), (see fig. 3) to position  = ON.
N.B.: When the apparatus is turned off by turning knob A) to position O = OFF, this also automatically stops the rotation of the front grille.
- When transporting and shifting please use the special handle attached to the body of the piece of furniture C) (fig. 4).

Cleaning

- Before cleaning the apparatus, always unplug it from the mains.
- To disassemble the fan:
 - Remove the screws securing the rear grille W) (fig. 4) and open the grille by pulling it out of the grips at the bottom.
 - Loosen the screw locking the fan in place.
 - Slide the fan off the motor shaft.
- To remove the front grille:
 - Remove the front ring nut F) (see fig. 1), using a coin or a screwdriver.
 - Remove the front grille G) by pulling it.
- After cleaning reassemble the parts proceeding in the reverse order as compared to disassembly, and taking care not to tighten excessively the screws and the front ring nut.
- Do not force the front grille, merely fit the teeth of the gear into those of the pinion.
- Wash the parts with a cloth moistened with warm water and a mild detergent, and reassemble only after drying them thoroughly

N.B. DO NOT PLACE THE MOTOR IN WATER.

Fig. 3

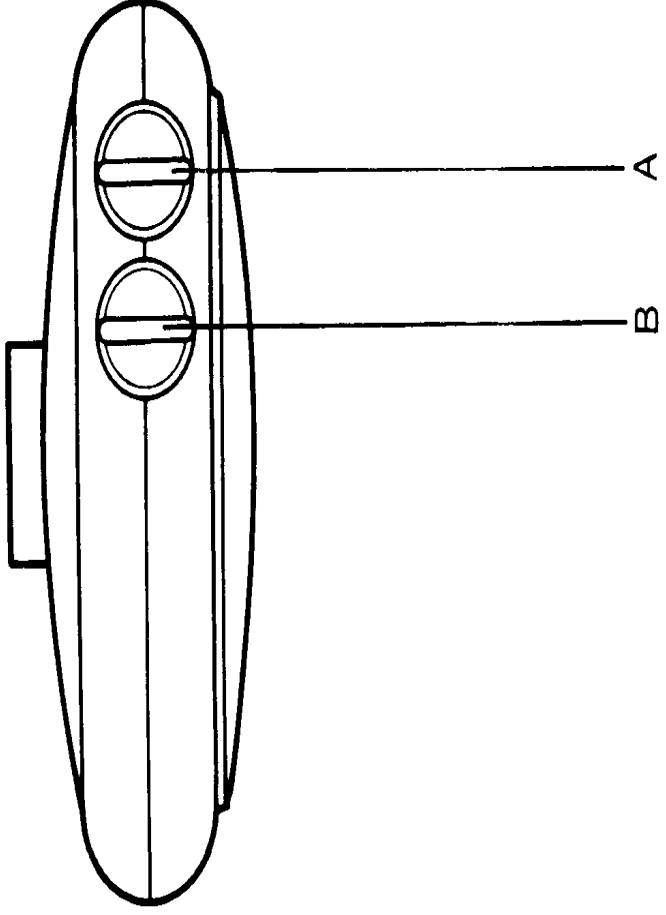
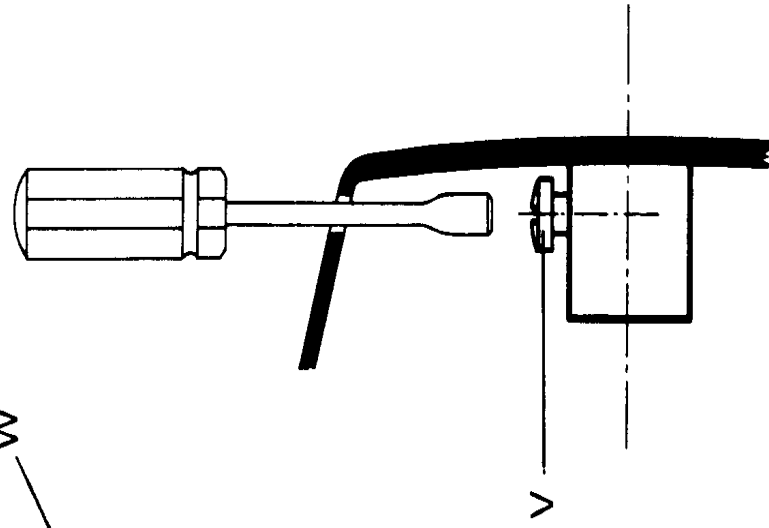
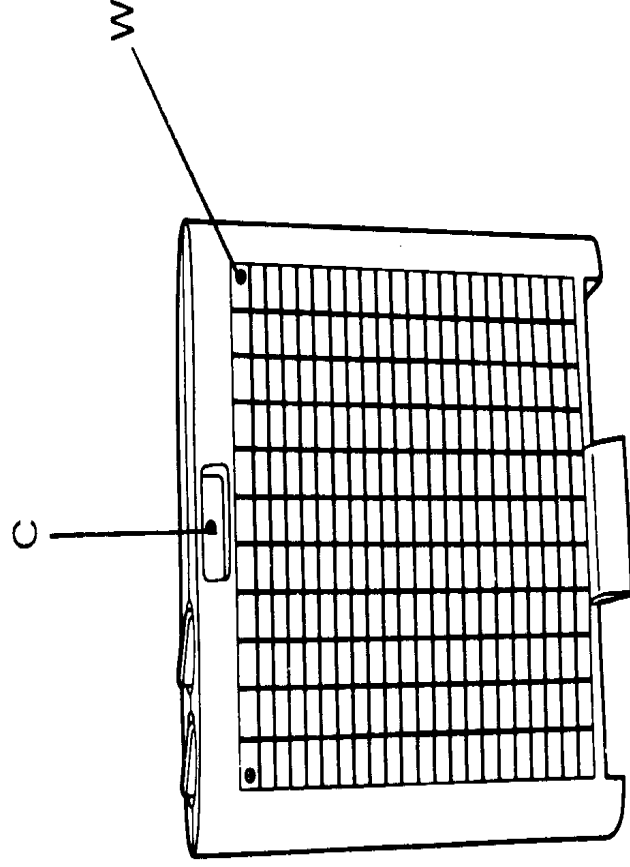


Fig. 4

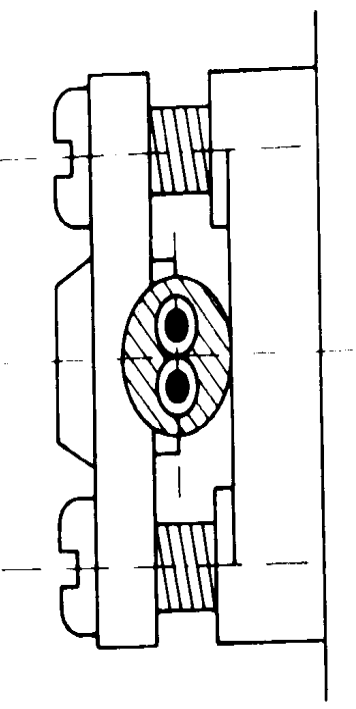


Posizionamento per dispositivo fermacavo
Positioning for cable fastener device
Positionnement pour dispositif arrêt-câble
Werwundung der Zusentlastung
Colocacion para el dispositivo de paro del cable
Plaatsing van de Trekantlasting
Positionering för kabelhållaranordning

تنبيت مر بط الكبل

- Per cavo a sezione circolare:
- Tipo H05 VV-F
- For circular section cable:
- Type H05 VV-F
- Pour câble à section circulaire:
- Type H05 VV-F
- Bei runden Kabeln:
- Typ H05 VV-F
- Para cable de seccion circular:
- Tipo H05 VV-F
- Voor een ronde Kabel:
- Type H05 VV-F
- Vid runda Kablar:
- Typ H05 VV-F

- للكبل الدائرى نوع H05 VV-F



- Per cavo a sezione piatta:
- Tipo H05 VV H2-F
- For flat section cable:
- Type H05 VV H2-F
- Pour câble à section plate:
- Type H05 VV H2-F
- Bei flachen Kabeln:
- Typ H05 VV H2-F
- Para cable de seccion plana:
- Tipo H05 VV H2-F
- Voor een platte Kabel:
- Type H05 VV H2-F
- Vid flata Kablar:
- Typ H05 VV H2-F

- للكبل المسطح نوع H05 VV H2-F

