

PLEASE CHECK WWW.MOLEX.COM FOR LATEST PART INFORMATION

Part Number: [0010021062](#)
Status: **Active**
Overview: [kk](#)
Description: 5.08mm (.200") Pitch KK® PC Board Connector, Bottom Entry Mount Style B, 1.0µm (40µ") Tin (Sn), 6 Circuits

Documents:

[3D Model](#) [Product Specification PS-99020-0087 \(PDF\)](#)
[Drawing \(PDF\)](#) [RoHS Certificate of Compliance \(PDF\)](#)

Agency Certification

CSA LR19980
 UL E29179

General

Product Family PCB Receptacles
 Series [3002](#)
 Application Board-to-Board
 Overview [kk](#)
 Product Name KK®

Physical

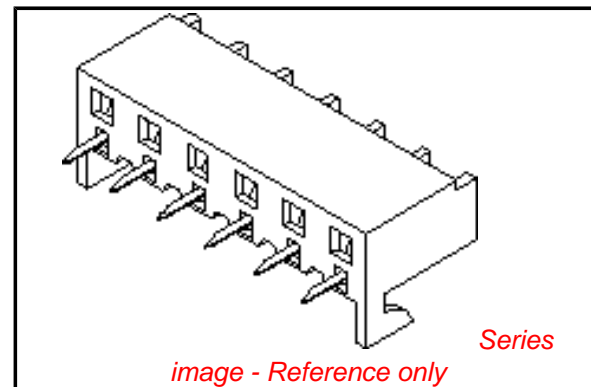
Circuits (Loaded) 6
 Color - Resin Natural
 Durability (mating cycles max) 25
 Flammability 94V-2
 Glow-Wire Compliant No
 Material - Metal Phosphor Bronze
 Material - Plating Mating Tin
 Material - Plating Termination Tin
 Material - Resin Nylon
 Number of Rows 1
 Orientation Bottom Entry
 PC Tail Length (in) 0.160 In
 PC Tail Length (mm) 4.10 mm
 PCB Locator No
 PCB Retention None
 PCB Thickness Recommended (in) 0.062 In
 PCB Thickness Recommended (mm) 1.60 mm
 Packaging Type Tray
 Pitch - Mating Interface (in) 0.200 In
 Pitch - Mating Interface (mm) 5.08 mm
 Plating min: Mating (µin) 40.00
 Plating min: Mating (µm) 1.000
 Plating min: Termination (µin) 40.00
 Plating min: Termination (µm) 1.00
 Polarized to PCB No
 Temperature Range - Operating 0°C to +75°C
 Termination Interface: Style Through Hole

Electrical

Current - Maximum per Contact 7A
 Voltage - Maximum 250V

Solder Process Data

Duration at Max. Process Temperature (seconds) 5
 Lead-free Process Capability Wave Capable (TH only)



EU RoHS

ELV and RoHS Compliant
REACH SVHC
 Not Reviewed
Halogen-Free Status
Not Reviewed

China RoHS



Need more information on product environmental compliance?

Email productcompliance@molex.com
 For a multiple part number RoHS Certificate of Compliance, [click here](#)

Please visit the [Contact Us](#) section for any non-product compliance questions.

Search Parts in this Series

[3002Series](#)

Mates With

[3003](#) , [2599](#) , [3008](#)

Max. Cycles at Max. Process Temperature	1
Process Temperature max. C	260

Material Info

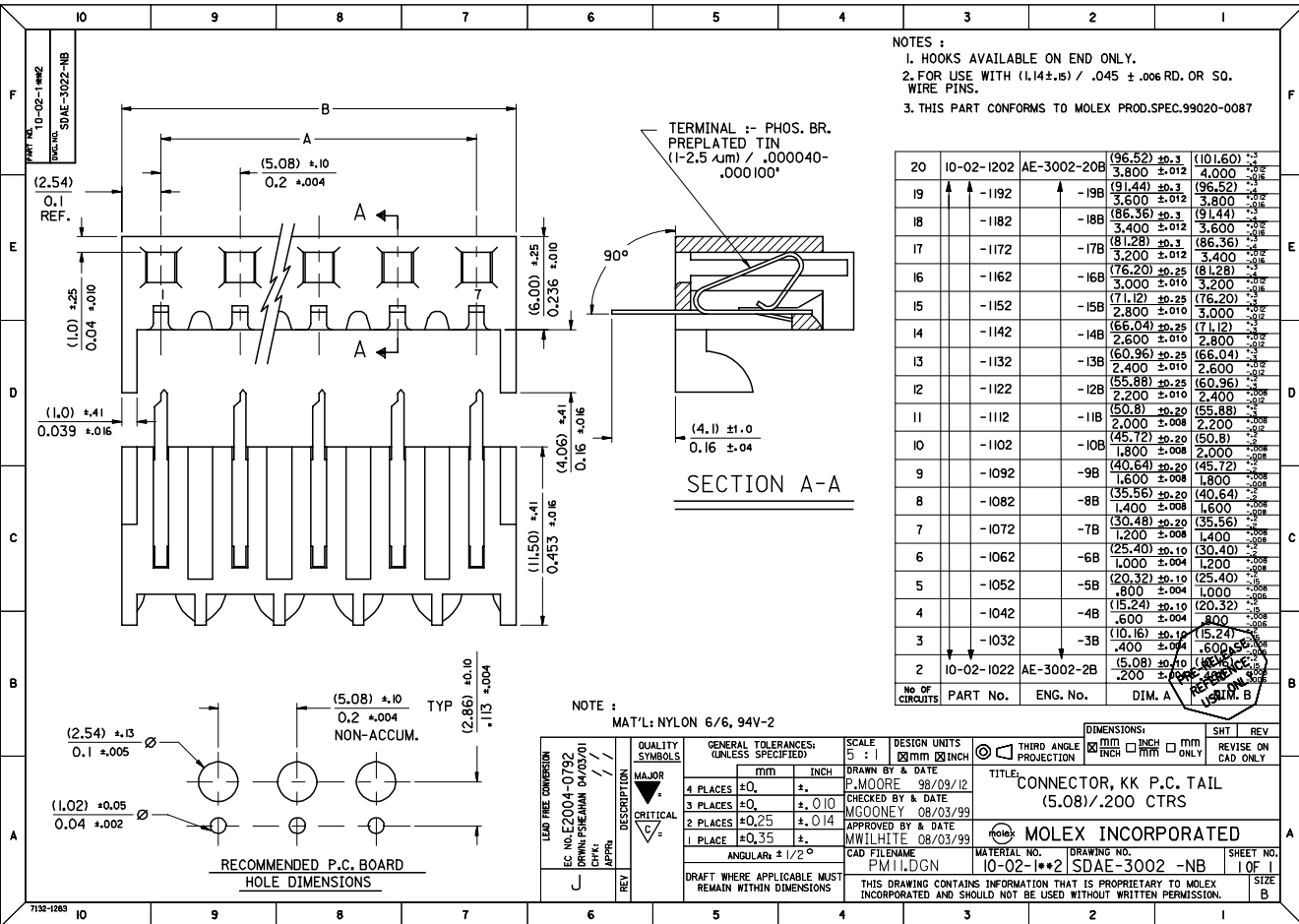
Old Part Number	300206B
-----------------	---------

Reference - Drawing Numbers

Product Specification	PS-99020-0087
Sales Drawing	SDAE-3002-NB

This document was generated on 05/21/2010

PLEASE CHECK WWW.MOLEX.COM FOR LATEST PART INFORMATION



NOTES :
 1. HOOKS AVAILABLE ON END ONLY.
 2. FOR USE WITH (1.14±.05) / .045 ± .006 RD. OR SQ. WIRE PINS.
 3. THIS PART CONFORMS TO MOLEX PROD.SPEC.99020-0087

No. OF CIRCUITS	PART No.	ENG. No.	DIM. A	DIM. B
20	10-02-1202	AE-3002-20B	(96.52) ±0.3	(101.60) ±0.3
			3.800 ±0.012	4.000 ±0.012
19	-1192	-19B	(91.44) ±0.3	(96.52) ±0.3
			3.600 ±0.012	3.800 ±0.012
18	-1182	-18B	(86.36) ±0.3	(91.44) ±0.3
			3.400 ±0.012	3.600 ±0.012
17	-1172	-17B	(81.28) ±0.3	(86.36) ±0.3
			3.200 ±0.012	3.400 ±0.012
16	-1162	-16B	(76.20) ±0.25	(81.28) ±0.3
			3.000 ±0.010	3.200 ±0.012
15	-1152	-15B	(71.12) ±0.25	(76.20) ±0.3
			2.800 ±0.010	3.000 ±0.012
14	-1142	-14B	(66.04) ±0.25	(71.12) ±0.3
			2.600 ±0.010	2.800 ±0.012
13	-1132	-13B	(60.96) ±0.25	(66.04) ±0.3
			2.400 ±0.010	2.600 ±0.012
12	-1122	-12B	(55.88) ±0.25	(60.96) ±0.3
			2.200 ±0.010	2.400 ±0.012
11	-1112	-11B	(50.8) ±0.20	(55.88) ±0.3
			2.000 ±0.008	2.200 ±0.012
10	-1102	-10B	(45.72) ±0.20	(50.8) ±0.3
			1.800 ±0.008	2.000 ±0.008
9	-1092	-9B	(40.64) ±0.20	(45.72) ±0.3
			1.600 ±0.008	1.800 ±0.008
8	-1082	-8B	(35.56) ±0.20	(40.64) ±0.3
			1.400 ±0.008	1.600 ±0.008
7	-1072	-7B	(30.48) ±0.20	(35.56) ±0.3
			1.200 ±0.008	1.400 ±0.008
6	-1062	-6B	(25.40) ±0.10	(30.48) ±0.3
			1.000 ±0.004	1.200 ±0.008
5	-1052	-5B	(20.32) ±0.10	(25.40) ±0.3
			.800 ±0.004	1.000 ±0.008
4	-1042	-4B	(15.24) ±0.10	(20.32) ±0.3
			.600 ±0.004	.800 ±0.008
3	-1032	-3B	(10.16) ±0.10	(15.24) ±0.3
			.400 ±0.004	.600 ±0.008
2	10-02-1022	AE-3002-2B	(5.08) ±0.10	(5.08) ±0.10
			.200 ±0.008	.200 ±0.008

SHT. 1 OF 1		MRI-SDAE-3002-NB			
MODIFICATION RECORD INDEX					
ECN	ISS.	DATE	INIT.	SHTS. AFFECTED	DESCRIPTION OF MOD.
E90109	F			I	
	G			I	
E2003-0992	H	03.03.27	PS	I	NEW PROD.SPEC. 99020-0087 ADDED

MOLEX EUROPE		REVISE ONLY ON CAD SYSTEM			
THIS DRAWING CONTAINS INFORMATION THAT IS PROPRIETARY TO MOLEX INC. & SHOULD NOT BE USED WITHOUT WRITTEN PERMISSION		CAD/CAM FILENAME		ISSUE	
MF0028		PM11 .DGN		H	