



## FEATURES

- High Reliability
- Thermal Protection
- Small Packaging
- Standard Output Voltage Adjustment  
( With External Potentiometer)
- Custom Control Chip Yields Compact Size with Low Cost

## SPECIFICATIONS

### INPUT

Voltage Range      See Model Selection Table

Max. Input Current      See Model Selection Table

### OUTPUT

Output Voltage      See Model Selection Table

Set Point              ±2%

Regulation

    Total              ±5%

Noise & Ripple, (peak-to-peak)

    5V Output          25 mV max.

    12V Output         25 mV max.

Output Current      See Model Selection Table

Short-Circuit Protection      Foldback with automatic reset

Efficiency            75% - 91% (typ.)

Remote ON / OFF Control              Available

Instantaneous Output Current              3.5A

## ENVIRONMENTAL

Operating Ambient Temp.              -10 to +70°C (See Derating Chart)

Storage Temp.              -30 to +85°C

Cooling Conditions      With external heat sink

## FUNCTIONS

Overload Protection      Current limit (automatic reset)

Thermal Protection      Standard

Remote ON/OFF          Standard

Sync Operation          Standard (with external circuit)

## MODEL SPECIFICATIONS

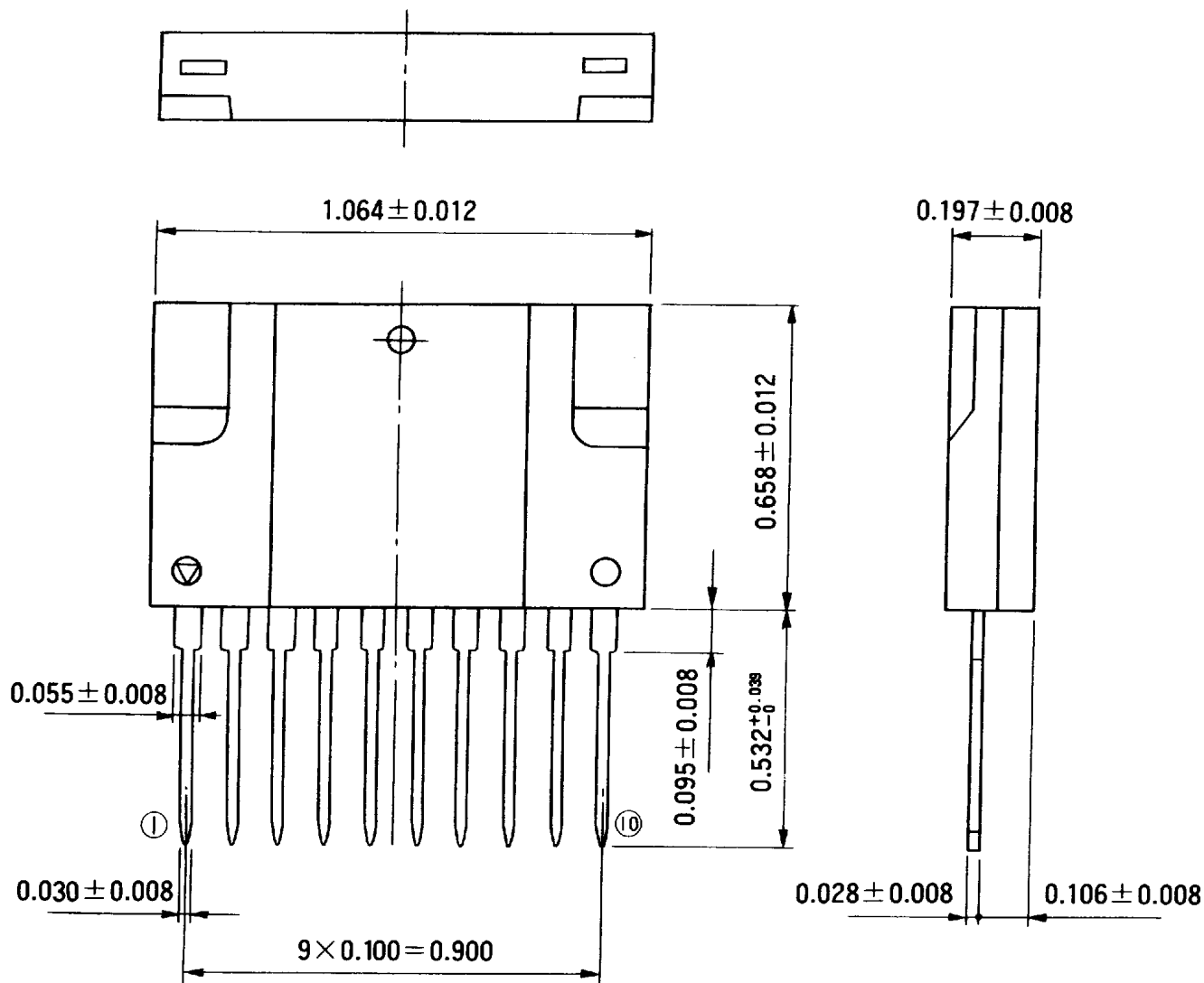
Output			Model and Input Range	
Volts	Range*	Amps	8-32 VDC	17-32 VDC
5	3 to 11	3.0/5A PK	HLD05003M	—
12	8 to 24	3.0/5A PK	—	HLE12003M

\* With external potentiometer

## MECHANICAL SPECIFICATIONS

Size (W x D x H) 0.66 x 1.06 x 0.20 inches (17 x 27 x 5 mm)

Weight 0.3 oz (8.5 g)

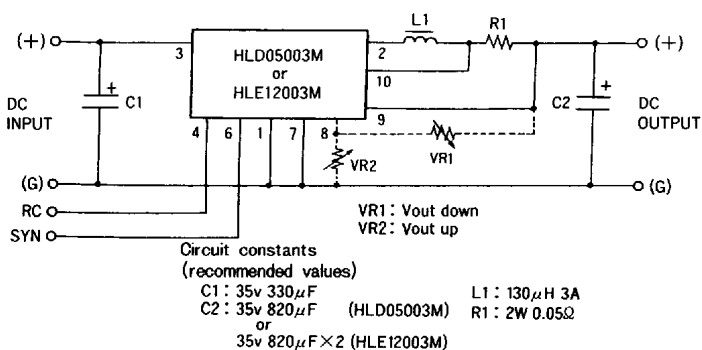


## TERMINAL FUNCTION

No.	Function
1	Ground
2	Inductor connection
3	(+) Input
4	Remote control
5	No connection
6	Switching frequency synchronization control
7	Ground
8	Output voltage adjustment
9	(+) Output voltage detector
10	Current detector* (see note)

\*Note: Do not connect when operating normally

## STANDARD EXTERNAL CONNECTION DIAGRAM



Note 1: When not using the remote control, please connect the RC terminal to the ground side for operation.

Note 2: When not using the switching frequency synchronization control, please connect the SYN terminal to the ground side for operation.