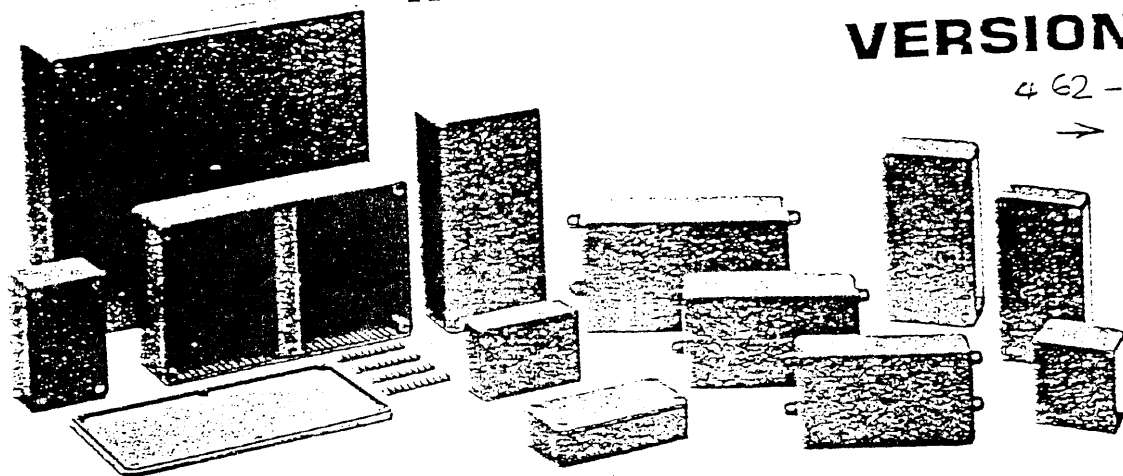


# BIMBOXES

## ABS PLASTIC BOXES BIM 2000 SERIES INCLUDING LUGGED-LID VERSIONS



462-196  
→ 287

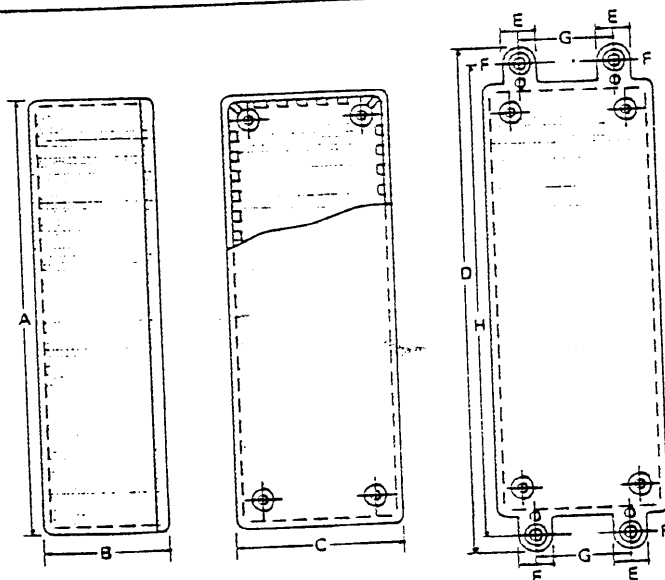
The BIM 2000 range of multi-purpose boxes are manufactured in ABS plastic, though BIM 2007/17 uses medium impact Styrene. They are available in a wide range of sizes, can be readily drilled and withstand up to 85°C (185°F).

Standard colours are grey, black and white, with orange and blue to special order and other colours subject to normal commercial quantity criteria. All BIM 2000 boxes except BIM 2007/17 incorporate slots on four sides for vertically supporting 1.5mm (0.062") pcb's on 5.08mm

(0.2") centres. Four BIMDAPTORS enable boards and sub-assemblies to be flat mounted and are supplied with each appropriate box.

BIM 2000 boxes have a close fitting flanged lid secured to the base by screws running into integral bosses (BIM 2000/10, 2000/17 and 2008/18 - self-tappers) enabling them to be readily hermetically sealed simply by using mastic between lid and base.

We offer three types of lugged-lid version.



General wall thickness 1.8mm (0.062") nominal.  
All specifications are subject to change without notice.

### STANDARD VERSION

Part No. Box /Lid	Dimensions (mm)		
	A	B	C
BIM 2000/10	75	27	50
BIM 2001/11	85	40	56
BIM 2002/12	100	25	50
BIM 2003/13	112	31	62
BIM 2004/14	120	40	65
BIM 2005/15	150	50	80
BIM 2006/16	190	60	110
BIM 2007/17	112	31	62
BIM 2008/18	55	42	55
BIM 2009/19	250	65	200
BIM 2030/30	142	30	80

### LUGGED LID VERSIONS

Part No. Box /Lid	Dimensions (mm)				
	D	E	F	G	H
BIM 2003/13 Lug	132	10	3.4	30	121
BIM 2004/14 Lug	140	10	3.4	33	129
BIM 2005/15 Lug	173	12	4.5	48	161

To order, specify as following example: Box No BIM 2004/14 Colour Black