

# Monolithic crystal filter

## MQF130.6-1500/06



### Application

- 6 pol filter
- i.f.- filter
- use in mobile and stationary transceivers

Limiting values		Unit	Value
Nominal frequency	$f_0$	MHz	130.6
Insertion loss		dB	< 6.5
Pass band at 3.0dB		kHz	$\pm > 7.5$
Ripple in pass band	$f_0 \pm 5 \text{ kHz}$	dB	< 1.0
Stop band attenuation	$f_0 \pm 35 \text{ kHz}$	dB	> 50
Alternate attenuation		dB	> 55
Spurious responses		dB	> 40

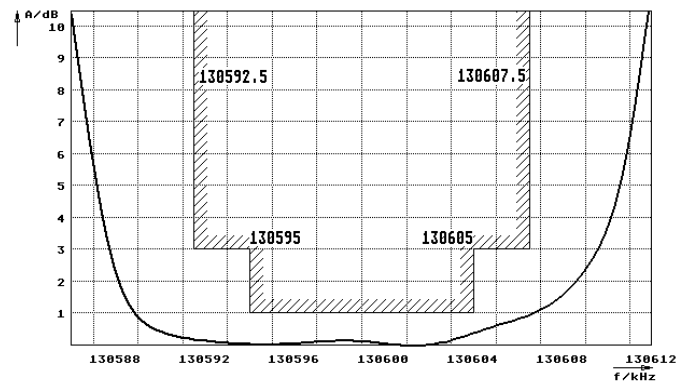
Terminating impedance Z			
R1  C1		Ohm/pF	50    0
R2  C2		Ohm/pF	50    0

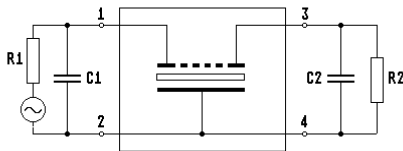
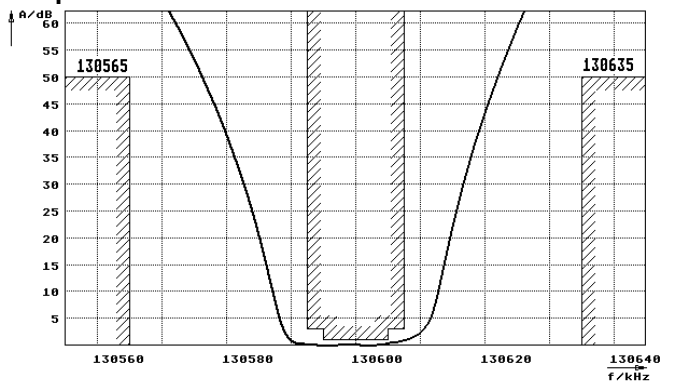
Operating temp. range	°C	-20... +70
Storage temp. range	°C	-45... +85
Environment conditions		according to CF001

### Characteristics MQF130.6-1500/06

#### Pass band



#### Stop band



- Pin connections:
- 1 Input
  - 2 Ground-Input
  - 3 Output
  - 4 Ground-Output

