

PLEASE CHECK WWW.MOLEX.COM FOR LATEST PART INFORMATION

Part Number: [0008650805](#)
Status: **Active**
Overview: [kk](#)
Description: KK® Cat Ear Crimp Terminal 41572, Bag Tin (Sn)

Documents:

[Drawing \(PDF\)](#) [RoHS Certificate of Compliance \(PDF\)](#)

General

Product Family	Crimp Terminals
Series	41572
Crimp Quality Equipment	Yes
Overview	kk
Product Name	Cat Ear, KK®

Physical

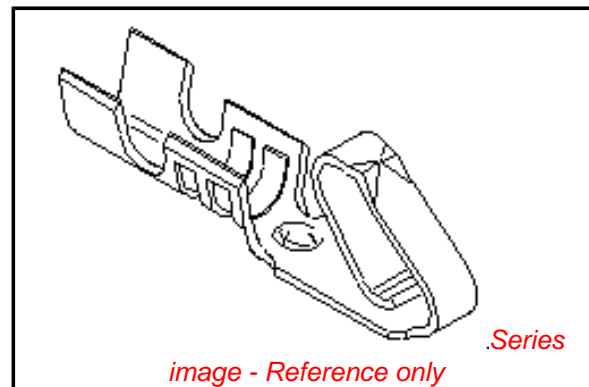
Gender	Female
Material - Metal	Phosphor Bronze
Material - Plating Mating	Tin
Material - Plating Termination	Tin
Packaging Type	Bag
Plating min: Mating (µin)	100
Plating min: Mating (µm)	2.50
Plating min: Termination (µin)	100
Plating min: Termination (µm)	2.50
Termination Interface: Style	Crimp or Compression
Wire Insulation Diameter	1.57mm (.062") max.
Wire Size AWG	22, 24, 26, 28, 30
Wire Size mm²	N/A

Material Info

Old Part Number	41572-A(P909)L
-----------------	----------------

Reference - Drawing Numbers

Packaging Specification	PK-2759-001
Product Specification	RPS-7478-001
Sales Drawing	SD-41572



EU RoHS

ELV and RoHS Compliant
REACH SVHC Contains SVHC: No
Halogen-Free Status

China RoHS



Need more information on product environmental compliance?

Email productcompliance@molex.com
 For a multiple part number RoHS Certificate of Compliance, [click here](#)

Please visit the [Contact Us](#) section for any non-product compliance questions.

Search Parts in this Series

[41572Series](#)

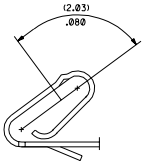
Application Tooling | [FAQ](#)

Tooling specifications and manuals are found by selecting the products below. Crimp Height Specifications are then contained in the Application Tooling Specification document.

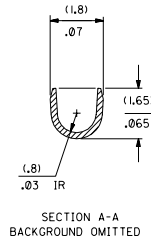
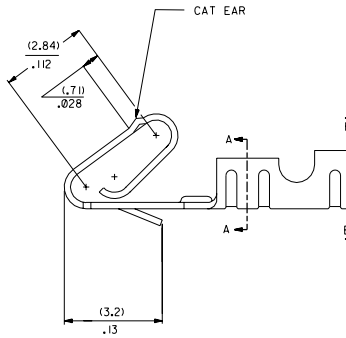
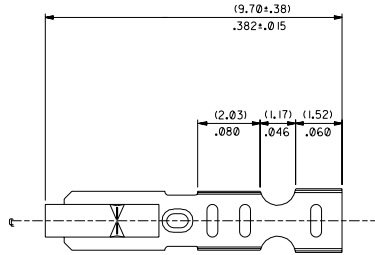
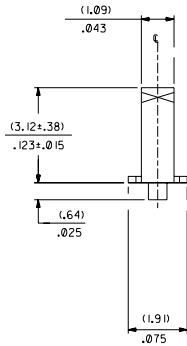
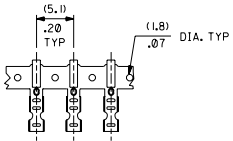
Global

Description	Product #
Extraction Tool	0011030022
Insertion Tool	0638120000
Hand Crimp Tool	0638118200

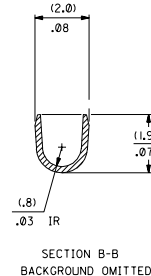
SELECT GOLD LOCATION



CARRIER VIEW

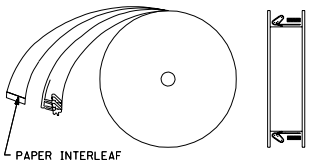


SECTION A-A
BACKGROUND OMITTED

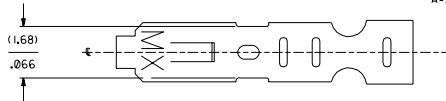


SECTION B-B
BACKGROUND OMITTED

WINDING DETAIL B



41572-*(***)*
MATERIAL L=LOOSE
A=SEE NOTE 5 FORM
L=LOOSE
BLANK=CHAIN PER DETAIL A



PLATING
PER SDES-88
*P909) OVERALL HOT TIN DTP: .00254 MICROMETERS MIN
(550) SELECT GOLD: .00038 MICROMETERS MIN.
OVERALL GOLD FLASH: .00005 MICROMETERS MIN.
OVERALL NICKEL UNDERPLATE: .00076 MICROMETERS MIN.
(555) SELECT GOLD: .00038 MICROMETERS MIN.
OVERALL NICKEL UNDERPLATE: .00076 MICROMETERS MIN.

*THE PRIMARY SHIPPING CARTON WILL BE LABELED 'COMPLIANT TO
RoHS DIRECTIVE 2002/95/EC AND ELV ANNEX II) OF DIRECTIVE
2000/53/EC.' CARTONS WITHOUT THIS LABEL MAY CONTAIN PRODUCT
WITH TIN-LEAD PLATING.

- NOTES:
1. CRIMP IS FOR 22-30 GA WIRE, WITH .062 DIA INSULATION MAX.
2. INSERTION FORCE OF TERMINAL INTO .100 & CONNECTOR IS 2.5 LBS. MAX
3. TERMINALS MUST RETAIN 8 LBS PULL FOR 1 MIN. IN KK .100 & HOUSING.
4. PARTS CONFORM TO PS-10-07
5. MATERIAL: .0080+.0004 THICK PHOS BRONZE ALLOY 510
6. DIMENSIONS GIVEN ACROSS CENTERLINES ARE SYMMETRICAL ABOUT THOSE
CENTERLINES WITHIN HALF THE TOTAL TOLERANCE.

PART NO.	ENG NO.
08-65-0804	41572-A(P909)
08-65-0805	41572-A(P909)L
	41572-A(555)
	41572-A(555)L
	41572-A(550)
	41572-A(550)L

D	CHG P913 TO P909 10/2004-181 415-04 SCHAFER
C	ADD TO CAD ECR U30423 3-19-93 SAMIEC

DIMENSIONS SHOWN METRIC INCH		REV. = 0		REVISE ONLY ON CAD SYSTEM	
TITLE		MFG. SH.		LTR.	
CRIMP TERMINAL					
22-30 GA WIRE					
SAME AS 6459 EXCEPT CAT EAR					
MOLEX INCORPORATED		SHEET NO.		DATE	
MOLEX INC. 6030 N. W. 10TH AVENUE, GAITHERSBURG, MD 20878		1 OF 1		3/19/93	
PART NO.		DRAWING NO.		U.S.A.	
SEE CHART		SD-41572			
BY: SAMIEC		DATE		REV. DATE	
APP'D: LENZ		SCALE		1:1	