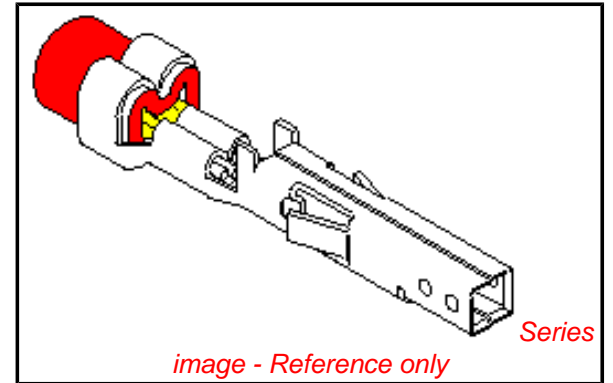


PLEASE CHECK WWW.MOLEX.COM FOR LATEST PART INFORMATION

Part Number: **0039000065**
Status: **Active**
Overview: [minifit_jr](#)
Description: 4.20mm (.165") Pitch Mini-Fit™ Crimp Terminal, Female, Phosphor Bronze, Tin (Sn), 22-28 AWG, Reel

Documents:

| | |
|--|---|
| Test Summary (PDF) | Product Specification PS-5556-001 (PDF) |
| Drawing (PDF) | Product Specification PS-5556-002 (PDF) |
| Product Specification PS-54111-002 (PDF) | Product Specification PS-5556-003 (PDF) |
| Product Specification PS-54452-007 (PDF) | RoHS Certificate of Compliance (PDF) |



General

| | |
|-------------------------|----------------------------|
| Product Family | Crimp Terminals |
| Series | 5556 |
| Crimp Quality Equipment | Yes |
| Overview | minifit_jr |
| Product Name | Mini-Fit® |

Physical

| | |
|--------------------------------|--------------------------|
| Durability (mating cycles max) | 30 |
| Gender | Receptacle |
| Material - Metal | Phosphor Bronze |
| Material - Plating Mating | Tin |
| Material - Plating Termination | Tin |
| Packaging Type | Reel |
| Plating min: Mating (µin) | 36 |
| Plating min: Mating (µm) | 0.90 |
| Plating min: Termination (µin) | 36 |
| Plating min: Termination (µm) | 0.90 |
| Termination Interface: Style | Crimp or Compression |
| Wire Insulation Diameter | 0.90-1.80mm (.035-.071") |
| Wire Size AWG | 22, 24, 26, 28 |
| Wire Size mm² | N/A |

Electrical

| | |
|-------------------------------|------|
| Current - Maximum per Contact | 9A |
| Voltage - Maximum | 600V |

Material Info

| | |
|-----------------|----------|
| Old Part Number | 5556PBT2 |
|-----------------|----------|

Reference - Drawing Numbers

| | |
|-------------------------|--|
| Packaging Specification | PK-5556-001 |
| Product Specification | PS-54111-002, PS-54452-007, PS-5556-001, PS-5556-002, PS-5556-003, RPS-54111-004 |
| Sales Drawing | SD-5556**** |
| Test Summary | TS-5556-002 |

EU RoHS

ELV and RoHS Compliant
REACH SVHC Contains SVHC: No
Halogen-Free Status

China RoHS



Need more information on product environmental compliance?

Email productcompliance@molex.com
 For a multiple part number RoHS Certificate of Compliance, [click here](#)

Please visit the [Contact Us](#) section for any non-product compliance questions.

Search Parts in this Series

5556Series

Mates With

5558 Male Crimp Terminals. Mini-Fit Jr.™ Header, Dual Row, 5566 , 5569

Use With

5557 Mini-Fit Jr.™ Receptacle Housing, 30067 TPA, 42474 BMI Panel Mount, 5559 Mini-Fit Jr.™ Plug Housing, Dual Row

Application Tooling | FAQ

Tooling specifications and manuals are found by selecting the products below. Crimp Height Specifications are then contained in the Application Tooling Specification document.

Global

| Description | Product # |
|---------------------------|----------------------------|
| FineAdjust™ Applicator | 0639002700 |
| T2 Terminator Tooling Die | 0639102700 |

FineAdjust for Mini- 0639020200
Fit Jr.™ Crimp
Terminals
T2 Terminator for 0639120200
Mini-Fit Jr.™ Crimp
Terminals
Extraction Tool 0011030044

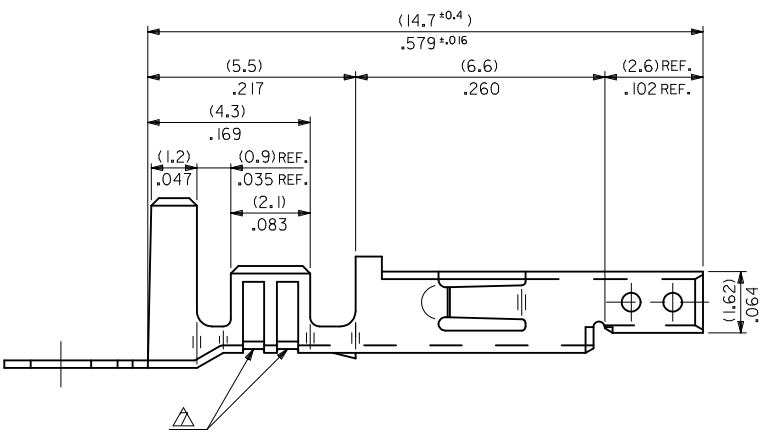
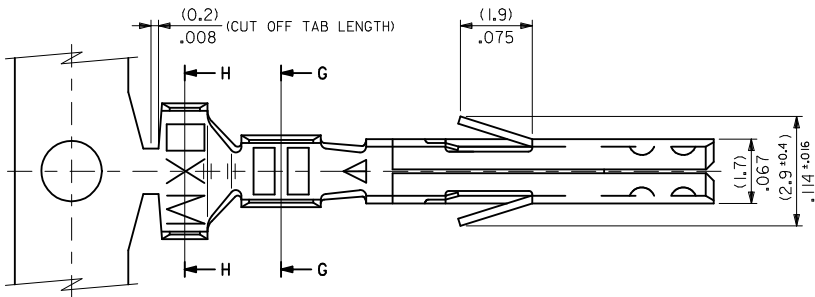
Japan

Description **Product #**

Applicator for M211A 0570383000
Bench Press,
22-28 AWG, for
5556T2/5558T2/50840/50841
Crimp Terminal

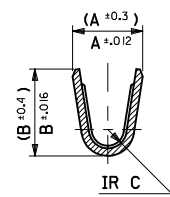
This document was generated on 06/08/2010

PLEASE CHECK WWW.MOLEX.COM FOR LATEST PART INFORMATION

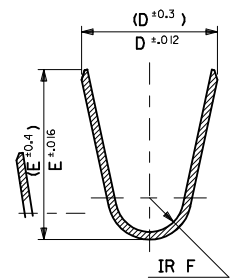


NOTES

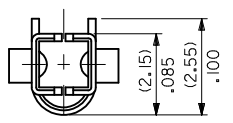
1. MATERIAL: SEE CHART.
2. FINISH: SEE CHART.
3. PRODUCT SPECIFICATION: PS-5556-001, PS-5556-002, PS-5556-003.
4. PACKAGING SPECIFICATION: PK-5556-001 FOR CHAIN TERMINALS
PK-5556-003 FOR LOOSE TERMINALS.
5. MATES WITH: 5558, 5566, 5569, 30069, 30070, 42440, 42404, 43879, 43810, 44068.
6. APPLICABLE HOUSING: 5557, 30067, 44516, OR 42474.
7. THE NUMBER OF SERRATIONS TO BE ONE FOR WIRE RANGE #22-28.
8. WHEN TERMINALS ARE INSTALLED IN THE HOUSING THE WIRES ARE TO BE DRESSED IN SUCH A MANNER TO ALLOW THE TERMINALS TO FLOAT FREELY IN THE POCKET.
9. THIS TERMINAL IS DESIGNED FOR SINGLE WIRE CRIMPING.
10. PART CONFORMS TO CLASS "B" REQUIREMENTS OF COSMETIC SPECIFICATION PS-45499-002.



SECT. G-G



SECT. H-H



| | | | | | | | | |
|--|--------------------|-----------------|--|----------------------------|---|---|--|--|
| ADD NOTES EC NO: UCP2010-2205 DRWN: JAGUILAR 2010/03/01 CHKD: 2010/03/01 2010/04/09 APPR: FSMITH 2010/04/09 | DESCRIPTION REV | QUALITY SYMBOLS | GENERAL TOLERANCES (UNLESS SPECIFIED) | DIMENSION STYLE MM/IN | SCALE 10:1 | DESIGN UNITS METRIC | THIRD ANGLE PROJECTION | |
| | | ▽=0 | 4 PLACES ± --- ± --- | DRAWN BY H. HIRAMOTO | DATE 1991/5/18 | TITLE MINI FIT JR OVERALL TIN FEMALE CRIMP TERMINAL | | |
| | | ▽=0 | 3 PLACES ± --- ± .008 | CHECKED BY M. FUKUSHIMA | DATE 1998/11/09 | | | |
| | | ▽=0 | 2 PLACES ± 0.2 ± .008 | 1 PLACE ± 0.2 ± --- | APPROVED BY FSMITH | DATE 2010/04/09 | MOLEX INCORPORATED DOCUMENT NO. SD-5556**** | |
| | | | ANGULAR ± 3 ° | MATERIAL NO. | SHEET NO. | | | |
| | | | DRAFT WHERE APPLICABLE MUST REMAIN WITHIN DIMENSIONS | SIZE C | THIS DRAWING CONTAINS INFORMATION THAT IS PROPRIETARY TO MOLEX INCORPORATED AND SHOULD NOT BE USED WITHOUT WRITTEN PERMISSION | | | |

| | | | | | | | | | | | |
|--|---------------|---------------|---------------|---------------|----------------|---------------|--------------------------|------------|------------|------------|-------|
| TIN OVER NICKEL PLATED PHOSPHOR BRONZE | (0.9) .035 | (4.5) .177 | (3.6) .142 | (0.6) .024 | (2.7) .106 | (2.3) .091 | ∅ (3.1) .122 MAX. | # 16 | 39-00-0119 | 5556 PBS3L | LOOSE |
| | (0.6) .024 | (2.3) .091 | (2.3) .091 | (0.4) .016 | (1.65) .065 | (1.8) .071 | ∅ (0.9-1.8) .035-.071 | #22-28 | ↑ -0118 | ↑ PBS3 | CHAIN |
| | (0.9) .035 | (4.5) .177 | (3.6) .142 | (0.5) .020 | (2.3) .091 | (1.9) .075 | ∅ (1.3-3.1) .051-.122 | # 18-24 | -0117 | PBS2L | LOOSE |
| TIN PLATED PHOSPHOR BRONZE | (0.9) .035 | (4.5) .177 | (3.6) .142 | (0.6) .024 | (2.7) .106 | (2.3) .091 | ∅ (3.1) .122 MAX. | # 16 | -0116 | PBS2 | CHAIN |
| | (0.6) .024 | (2.3) .091 | (2.3) .091 | (0.4) .016 | (1.65) .065 | (1.8) .071 | ∅ (0.9-1.8) .035-.071 | #22-28 | -0115 | PBSL | LOOSE |
| | (0.9) .035 | (4.5) .177 | (3.6) .142 | (0.5) .020 | (2.3) .091 | (1.9) .075 | ∅ (1.3-3.1) .051-.122 | # 18-24 | -0114 | PBS | CHAIN |
| TIN OVER NICKEL PLATED BRASS | (0.9) .035 | (4.5) .177 | (3.6) .142 | (0.6) .024 | (2.7) .106 | (2.3) .091 | ∅ (3.1) .122 MAX. | # 16 | -0080 | PBT3L | LOOSE |
| | (0.6) .024 | (2.3) .091 | (2.3) .091 | (0.4) .016 | (1.65) .065 | (1.8) .071 | ∅ (0.9-1.8) .035-.071 | #22-28 | -0079 | PBT3 | CHAIN |
| | (0.9) .035 | (4.5) .177 | (3.6) .142 | (0.5) .020 | (2.3) .091 | (1.9) .075 | ∅ (1.3-3.1) .051-.122 | # 18-24 | -0066 | PBT2L | LOOSE |
| TIN OVER COPPER PLATED BRASS | (0.9) .035 | (4.5) .177 | (3.6) .142 | (0.6) .024 | (2.7) .106 | (2.3) .091 | ∅ (3.1) .122 MAX. | # 16 | -0065 | PBT2 | CHAIN |
| | (0.6) .024 | (2.3) .091 | (2.3) .091 | (0.4) .016 | (1.65) .065 | (1.8) .071 | ∅ (0.9-1.8) .035-.071 | #22-28 | -0060 | PBTL | LOOSE |
| | (0.9) .035 | (4.5) .177 | (3.6) .142 | (0.5) .020 | (2.3) .091 | (1.9) .075 | ∅ (1.3-3.1) .051-.122 | # 18-24 | -0059 | PBT | CHAIN |
| MATERIAL | (0.9) .035 | (4.5) .177 | (3.6) .142 | (0.6) .024 | (2.7) .106 | (2.3) .091 | ∅ (3.1) .122 MAX. | # 16 | -0113 | S3L | LOOSE |
| | (0.6) .024 | (2.3) .091 | (2.3) .091 | (0.4) .016 | (1.65) .065 | (1.8) .071 | ∅ (0.9-1.8) .035-.071 | #22-28 | -0112 | S3 | CHAIN |
| | (0.9) .035 | (4.5) .177 | (3.6) .142 | (0.5) .020 | (2.3) .091 | (1.9) .075 | ∅ (1.3-3.1) .051-.122 | # 18-24 | -0111 | S2L | LOOSE |
| MATERIAL | (0.9) .035 | (4.5) .177 | (3.6) .142 | (0.6) .024 | (2.7) .106 | (2.3) .091 | ∅ (3.1) .122 MAX. | # 16 | -0110 | S2 | CHAIN |
| | (0.6) .024 | (2.3) .091 | (2.3) .091 | (0.4) .016 | (1.65) .065 | (1.8) .071 | ∅ (0.9-1.8) .035-.071 | #22-28 | -0109 | SL | LOOSE |
| | (0.9) .035 | (4.5) .177 | (3.6) .142 | (0.5) .020 | (2.3) .091 | (1.9) .075 | ∅ (1.3-3.1) .051-.122 | # 18-24 | -0108 | S | CHAIN |
| MATERIAL | (0.9) .035 | (4.5) .177 | (3.6) .142 | (0.6) .024 | (2.7) .106 | (2.3) .091 | ∅ (3.1) .122 MAX. | # 16 | -0078 | T3L | LOOSE |
| | (0.6) .024 | (2.3) .091 | (2.3) .091 | (0.4) .016 | (1.65) .065 | (1.8) .071 | ∅ (0.9-1.8) .035-.071 | #22-28 | -0077 | T3 | CHAIN |
| | (0.9) .035 | (4.5) .177 | (3.6) .142 | (0.5) .020 | (2.3) .091 | (1.9) .075 | ∅ (1.3-3.1) .051-.122 | # 18-24 | -0047 | T2L | LOOSE |
| MATERIAL | (0.9) .035 | (4.5) .177 | (3.6) .142 | (0.6) .024 | (2.7) .106 | (2.3) .091 | ∅ (3.1) .122 MAX. | # 16 | -0046 | T2 | CHAIN |
| | (0.6) .024 | (2.3) .091 | (2.3) .091 | (0.4) .016 | (1.65) .065 | (1.8) .071 | ∅ (0.9-1.8) .035-.071 | #22-28 | -0039 | TL | LOOSE |
| | (0.9) .035 | (4.5) .177 | (3.6) .142 | (0.5) .020 | (2.3) .091 | (1.9) .075 | ∅ (1.3-3.1) .051-.122 | # 18-24 | 39-00-0038 | 5556 T | CHAIN |
| MATERIAL | F | E | D | C | B | A | INS. RANGE | WIRE RANGE | EDP NO. | ENG. NO. | FORM |

| | | | | | |
|--|--|---|---|---|--|
| SEE SHEET 1 EC NO: UCP2010-2205 DRWN: J JAGUILAR 2010/03/01 CHKD: JBELL 2010/03/01 APPR: FSMITH 2010/04/09 K | QUALITY SYMBOLS ∇=0 ∇=0 ∇=0 | GENERAL TOLERANCES (UNLESS SPECIFIED) mm INCH 4 PLACES ± --- ± --- 3 PLACES ± --- ± .008 2 PLACES ± 0.2 ± .008 1 PLACE ± 0.2 ± --- ANGULAR ± ---° | DIMENSION STYLE MM/IN DRAWN BY DATE H.HIRAMOTO 1991/5/18 CHECKED BY DATE M. FUKUSHIMA 1998/11/19 APPROVED BY DATE F&M HUNISHI 2008/04/19 | SCALE --- DESIGN UNITS METRIC THIRD ANGLE PROJECTION | TITLE MINI FIT JR OVERALL TIN FEMALE CRIMP TERMINAL MOLEX INCORPORATED DOCUMENT NO. SD-5556**** SHEET NO. 2 OF 2 |
| | DRAFT WHERE APPLICABLE MUST REMAIN WITHIN DIMENSIONS | | SEE CHART | THIS DRAWING CONTAINS INFORMATION THAT IS PROPRIETARY TO MOLEX INCORPORATED AND SHOULD NOT BE USED WITHOUT WRITTEN PERMISSION | |
| | | | MATERIAL NO. | | |
| | | | SIZE B | | |