

EMC Components

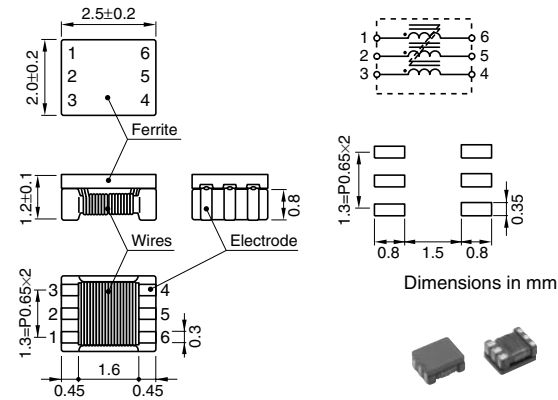
ACM Series

Common Mode Choke Coils for Signal Line SMD

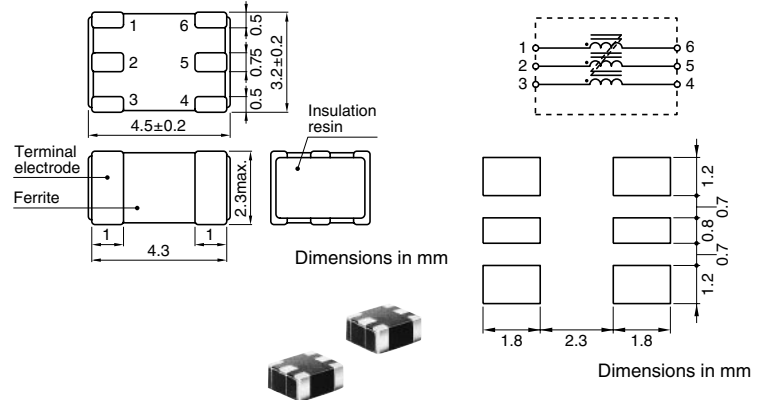
SHAPES AND DIMENSIONS/CIRCUIT DIAGRAMS/RECOMMENDED PC BOARD PATTERNS

3-LINE TYPE

ACM2520-3P



ACM4532-102-3P



ELECTRICAL CHARACTERISTICS

Part No.	Impedance (Ω)typ.[100MHz]	DC resistance (Ω)max.[Per 1line]	Rated voltage E _{dc} (V)max.	Rated current I _{dc} (A)max.
2-LINE				
ACM2012-900-2P-□*	90	0.19	50	0.4
ACM2012-121-2P-□	120	0.22	50	0.37
ACM2012-201-2P-□	200	0.25	50	0.35
ACM2012-361-2P-□	360	0.5	50	0.22
ACM2520-301-2P-□	300	0.35	20	0.4
ACM2520-451-2P-□	450	0.4	20	0.35
ACM2520-601-2P-□	600	0.45	20	0.3
ACM2520-102-2P-□	1000	0.9	20	0.2
ACM3225-800-2P-□	80	0.15	20	0.4
ACM3225-161-2P-□	160	0.2	20	0.35
ACM3225-271-2P-□	270	0.3	20	0.3
ACM3225-102-2P-□	1000	0.5	20	0.2
3-LINE				
ACM2520-601-3P-□	600	0.7	20	0.2
ACM2520-801-3P-□	800	1.6	20	0.15
ACM4532-102-3P-□	1000	0.6	20	0.2

* □ : Packaging style (T: Taping [ø180mm reel], TL: Taping [ø330mm reel])

EMC Components

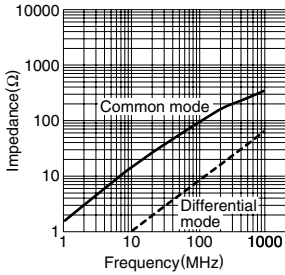
ACM Series

Common Mode Choke Coils for Signal Line SMD

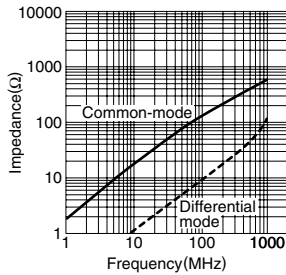
TYPICAL ELECTRICAL CHARACTERISTICS

IMPEDANCE vs. FREQUENCY CHARACTERISTICS

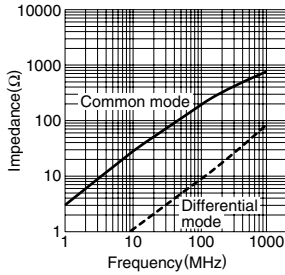
ACM2012-900-2P



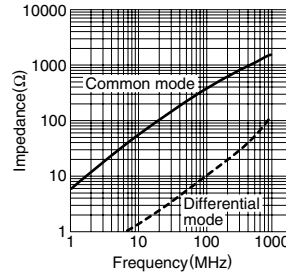
ACM2012-121-2P



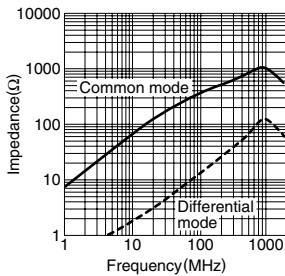
ACM2012-201-2P



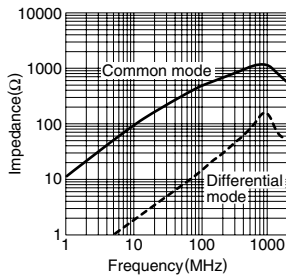
ACM2012-361-2P



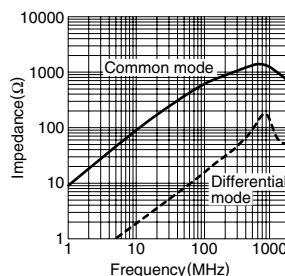
ACM2520-301-2P



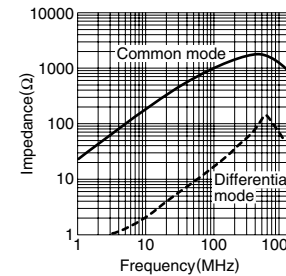
ACM2520-451-2P



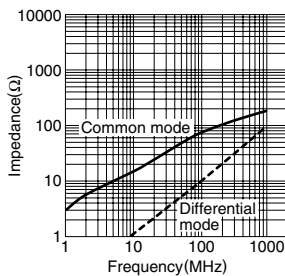
ACM2520-601-2P



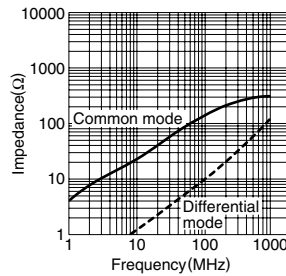
ACM2520-102-2P



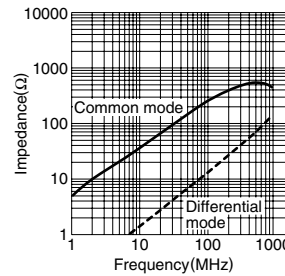
ACM3225-800-2P



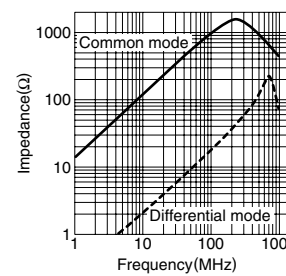
ACM3225-161-2P



ACM3225-271-2P



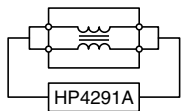
ACM3225-102-2P



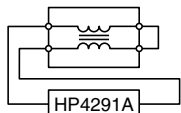
MEASURING CIRCUITS

2-LINE

Common mode



Differential mode



EMC Components

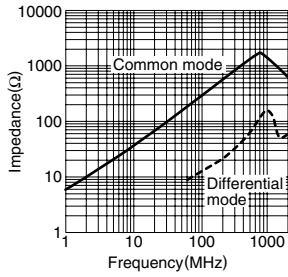
ACM Series

Common Mode Choke Coils for Signal Line SMD

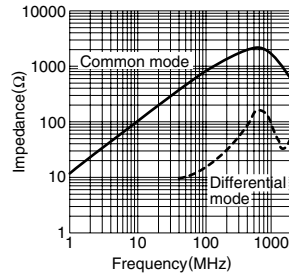
TYPICAL ELECTRICAL CHARACTERISTICS

IMPEDANCE vs. FREQUENCY CHARACTERISTICS

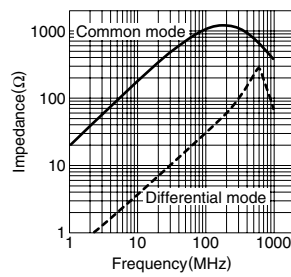
ACM2520-601-3P



ACM2520-801-3P



ACM4532-102-3P



MEASURING CIRCUITS

3-LINE

