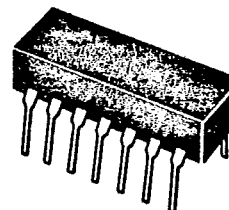
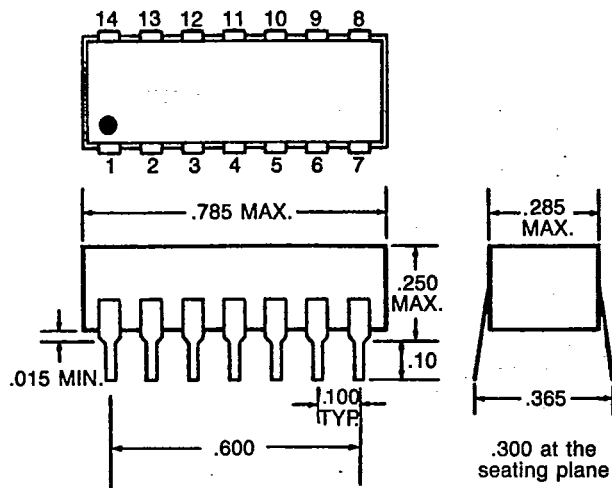




# LOW PROFILE DIGITAL DELAY LINES MACHINE INSERTABLE DIP TTL COMPATIBLE • 14 PIN RACKAGE 5 TAPS • SINGLE • DUAL • TRIPLE

## SERIES L05, L01, L02 AND L03



White Dot locates Pin 1

ONLY ACTIVE PINS ARE SUPPLIED

Intermediate delay values available upon request.

SERIES L05 (5 TAP)		
MODEL NO. (Fig. 1)	Delay (ns)	Delay/Tap(ns)
L05025	25	5
L05030	30	6
L05035	35	7
L05040	40	8
L05045	45	9
L05050	50	10
L05075	75	15
L05100	100	20
L05150	150	30
L05200	200	40
L05250	250	50
L05300	300	60
L05400	400	80
L05500	500	100

Delay/line (ns)	MODEL NUMBERS		
	Series L01	Series L02	Series L03
	One output (Fig. 2)	Dual output (Fig. 3)	Triple output (Fig. 4)
5	L01005	L02005	L03005
10	L01010	L02010	L03010
15	L01015	L02015	L03015
20	L01020	L02020	L03020
25	L01025	L02025	L03025
50	L01050	L02050	L03050
75	L01075	L02075	L03075
100	L01100	L02100	L03100
150	L01150	L02150	L03150
200	L01200	L02200	L03200
250	L01250	L02250	L03250
300	L01300		
400	L01400		
500	L01500		

DC PARAMETERS		LIMITS	
		Min.	Max.
Voh	Vcc = min Ioh = 1.0mA	2.5V	—
Vol	Vcc = min Iol = 20mA	—	0.5V
Iih	Vcc = max Vih = 2.7V	—	50µA
Iil	Vcc = max Vil = 0.5V	-2.0mA	—
Ii	Vcc = max Vi = 5.5V	—	1.0mA
Vi	Vcc = min Iin = -18 modc	-1.2vdc	—
Icc	Vcc = max outputs low	Series L05 70mA Series L01 55mA Series L02 100mA Series L03 120mA	

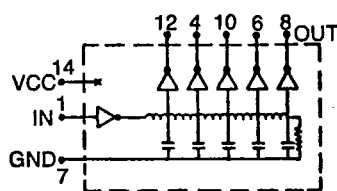


FIG. 1

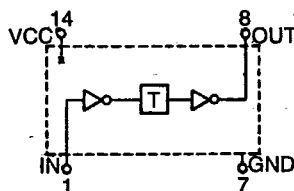


FIG. 2

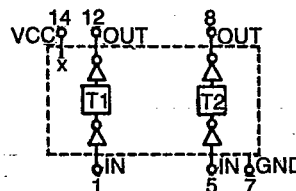


FIG. 3

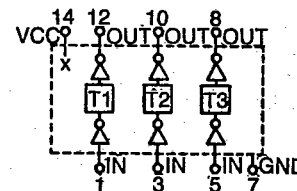


FIG. 4

**SPECIFICATIONS:**

- Supply voltage: 5.0VDC ± 10%
- Delay tolerances: ± 2ns or ± 5% wig
- Rise time: 4ns max
- Minimum Pulse Width: 40% of Td
- Maximum Duty Cycle: 50%
- Operating temp. range: 0°C to +70°C
- Temp. coeff. of delays: 1.0ns + 500ppm/°C
- Terminals: Electro tin plated alloy 42 .020w x .010th.

**TEST CONDITIONS:**

- Vcc = 5.0VDC, Temp. 25°C ± 5°C
- Time delay measured at the 1.5V level
- Rise time measured from .75V to 2.4V
- All outputs loaded with 15pf
- Input Test Pulse: Pulse Voltage: 3.0V  
Pulse rise time: 2ns  
Pulse width: 1.2 x max Td  
Pulse spacing: 5 x max Td