

Monolithic crystal filter

MQF21.4-0750/16



Application

- 4 pol filter
- i.f.- filter
- use in mobile and stationary transceivers

Limiting values

		Unit	Value
Center frequency	f_0	MHz	21.4
Insertion loss		dB	≤ 2.5
Pass band at 3.0 dB		kHz	± 3.75
Ripple in pass band	$f_0 \pm 3.00$ kHz	dB	≤ 1.0
Stop band attenuation	$f_0 \pm 14$ kHz	dB	≥ 40

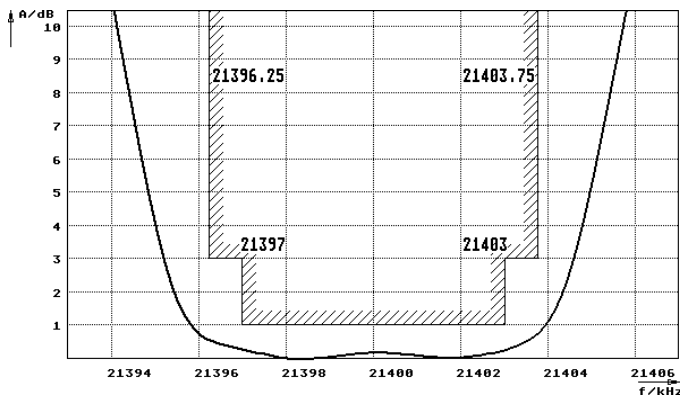
Terminating impedance Z

R1 C1	Ohm/pF	850 5	
R2 C2	Ohm/pF	850 5	
Coupling capacitance	Ck	pF	16.0

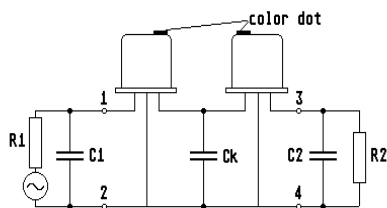
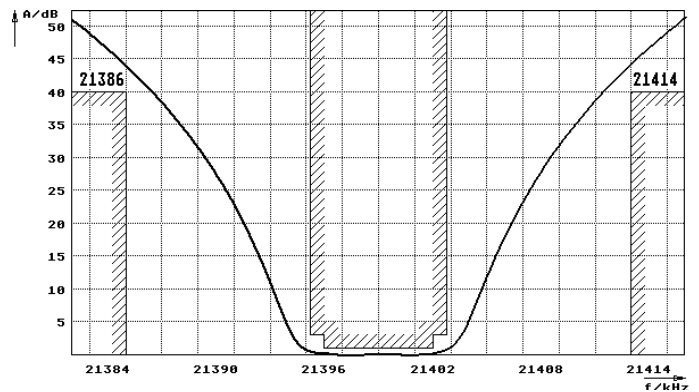
Operating temp. range	$^{\circ}\text{C}$	-20... +70
-----------------------	--------------------	------------

Characteristics MQF21.4-0750/16

Pass band



Stop band



Pin connections: 1 Input
2 Input-E
3 Output
4 Output-E

