

PLEASE CHECK WWW.MOLEX.COM FOR LATEST PART INFORMATION

Part Number: **0850170115**
Status: **Active**
Overview: din_41612
Description: 2.54mm (.100") Pitch DIN 41612/EIC 603-2 Mixed Layout Connector, Male Style M (Hybrid type), Inverse Press-Fit, 0.6µm (24µ") Gold (Au) Selective, 64 Circuits , Lead Free

Documents:

[3D Model](#) [Product Specification PS-85013-0002 \(PDF\)](#)
[Drawing \(PDF\)](#) [RoHS Certificate of Compliance \(PDF\)](#)

Agency Certification

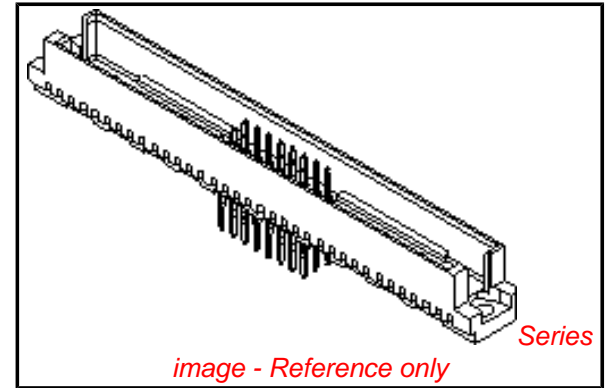
CSA LR19980
 UL E29179

General

Product Family Backplane Connectors
 Series 85017
 Application Backplane
 Comments Mixed Layout
 Component Type PCB Header
 Overview din_41612
 Product Name IEC 603-2/DIN 41612
 Style M

Physical

Circuits (Loaded) 64
 Circuits (maximum) 64
 Circuits Detail 60 Signal , 4 Power
 Color - Resin Gray
 Durability (mating cycles max) 400
 First Mate / Last Break No
 Flammability 94V-0
 Guide to Mating Part No
 Keying to Mating Part Yes
 Material - Metal Phosphor Bronze
 Material - Plating Mating Gold
 Material - Plating Termination Tin
 Material - Resin Polyester
 Number of Columns 20
 Number of Pairs Open Pin Field
 Number of Rows 3
 Orientation Vertical
 PC Tail Length (in) 0.228 In
 PC Tail Length (mm) 5.80 mm
 PCB Locator No
 PCB Retention Yes
 PCB Thickness Recommended (in) 0.062 In
 PCB Thickness Recommended (mm) 1.60 mm
 Packaging Type Tray
 Pitch - Mating Interface (in) 0.100 In
 Pitch - Mating Interface (mm) 2.54 mm
 Pitch - Term. Interface (in) 0.100 In
 Pitch - Term. Interface (mm) 2.54 mm
 Plating min: Mating (µin) 24
 Plating min: Mating (µm) 0.6



EU RoHS

ELV and RoHS Compliant
REACH SVHC
 Not Reviewed
Halogen-Free Status
Not Reviewed

China RoHS



Need more information on product environmental compliance?

Email productcompliance@molex.com
 For a multiple part number RoHS Certificate of Compliance, [click here](#)

Please visit the [Contact Us](#) section for any non-product compliance questions.

Search Parts in this Series

[85017Series](#)

Mates With

[85048](#) Straight Female Style M Receptacle.
[85056](#) Straight Female Style M "inverse" Receptacle

Use With

[85023](#) DIN 41612 Coaxial Contact

Plating min: Termination (μ in)	16
Plating min: Termination (μ m)	0.4
Polarized to PCB	No
Stackable	Yes
Surface Mount Compatible (SMC)	No
Temperature Range - Operating	-55°C to +125°C
Termination Interface: Style	Through Hole - Compliant Pin

Electrical

Current - Maximum per Contact	1.5A
Data Rate	622.0 Mbps
Voltage - Maximum	250V AC (RMS)

Material Info

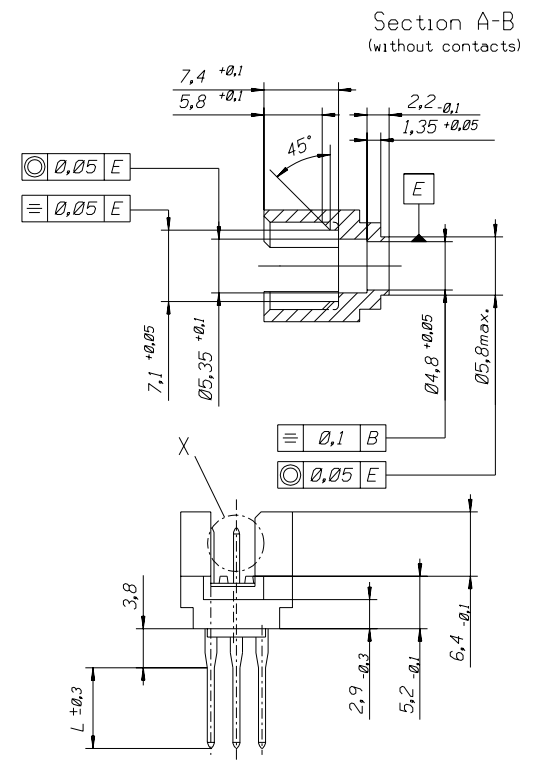
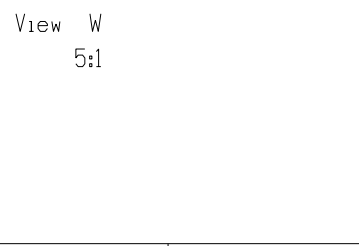
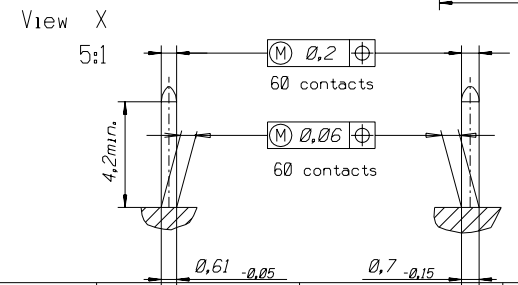
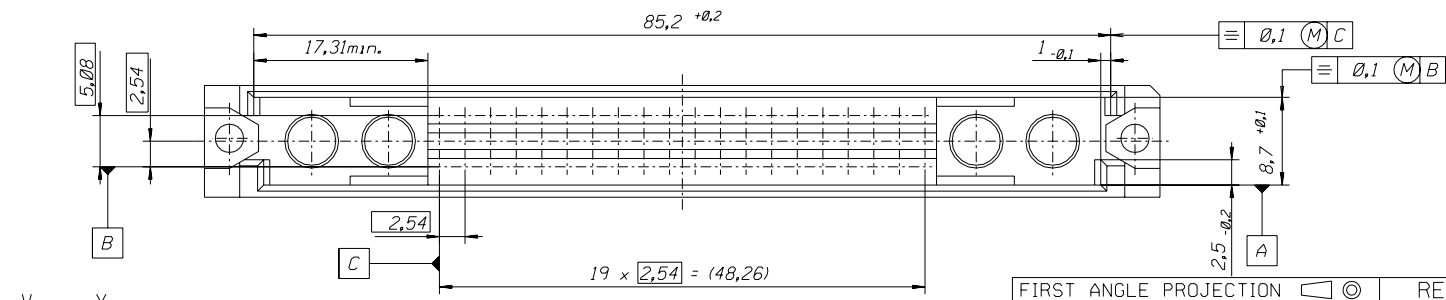
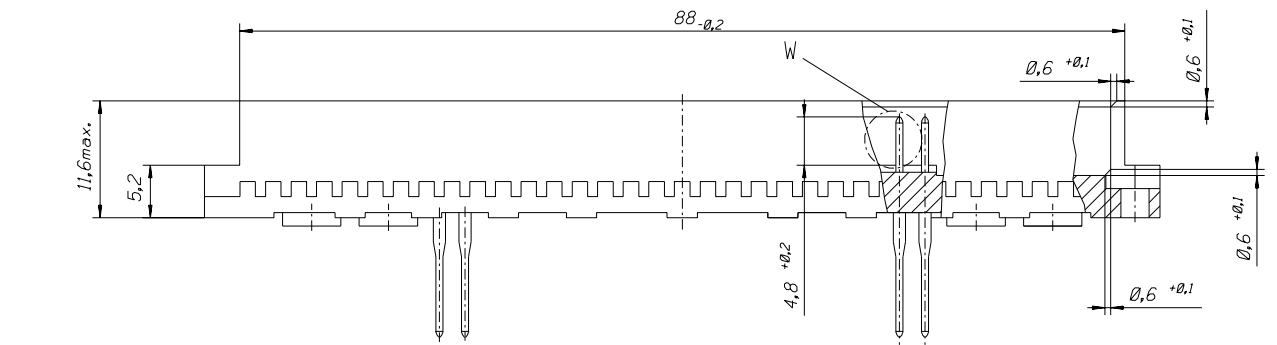
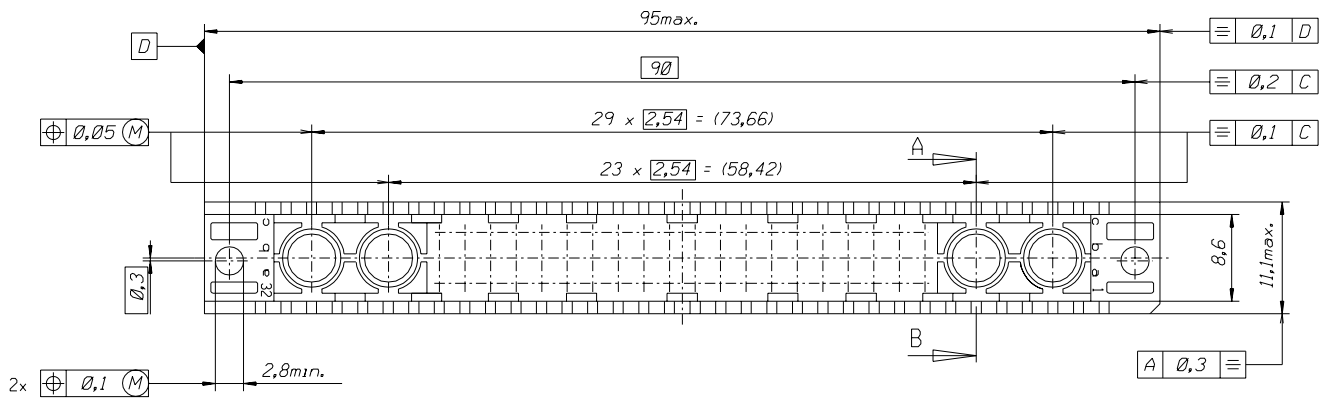
Reference - Drawing Numbers

Packaging Specification	PK-85017-001
Product Specification	PS-85013-0002
Sales Drawing	603-6093-23, SD-85017-003

This document was generated on 05/17/2010

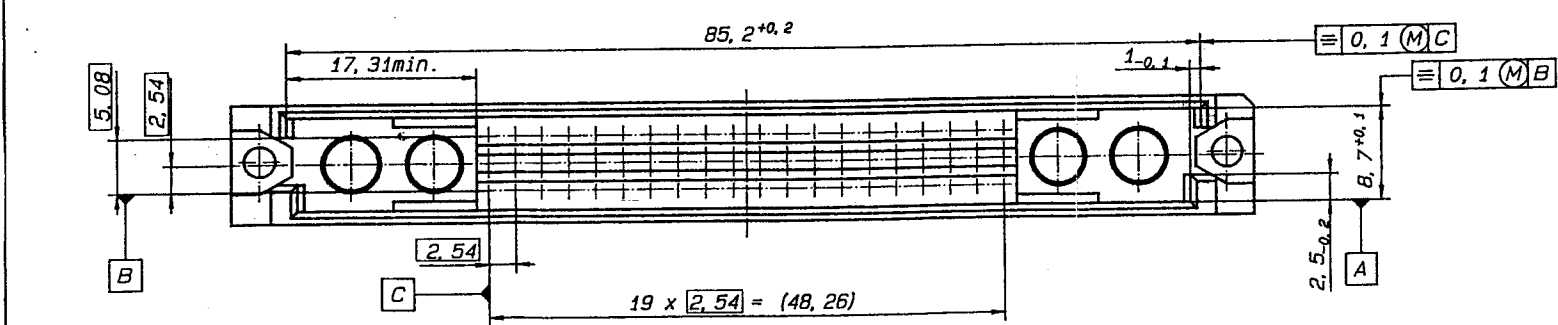
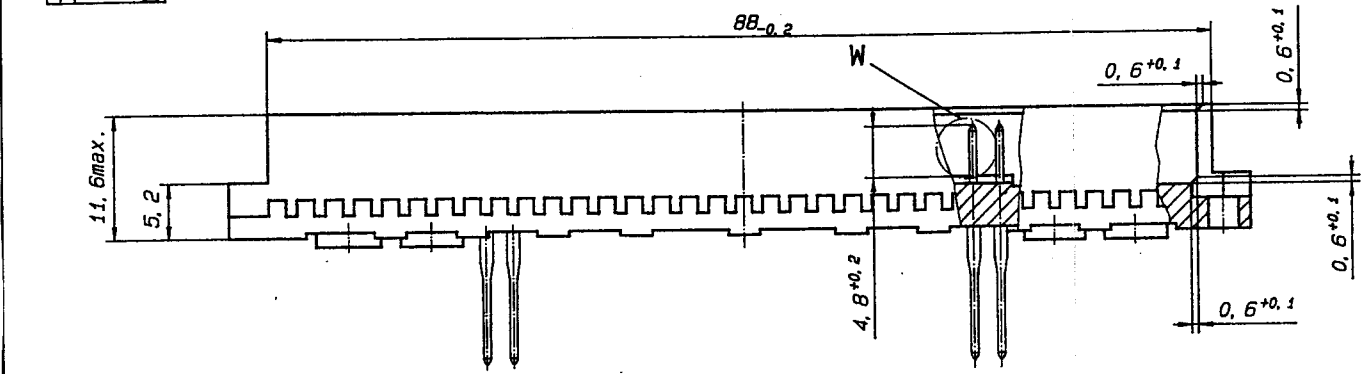
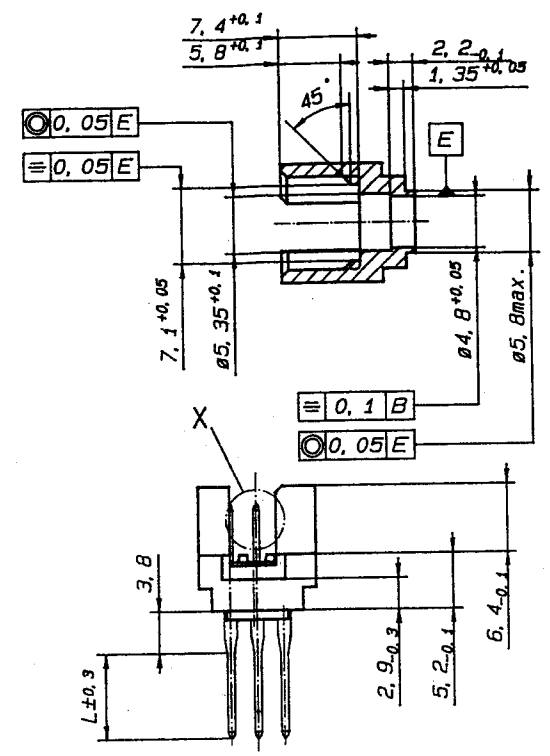
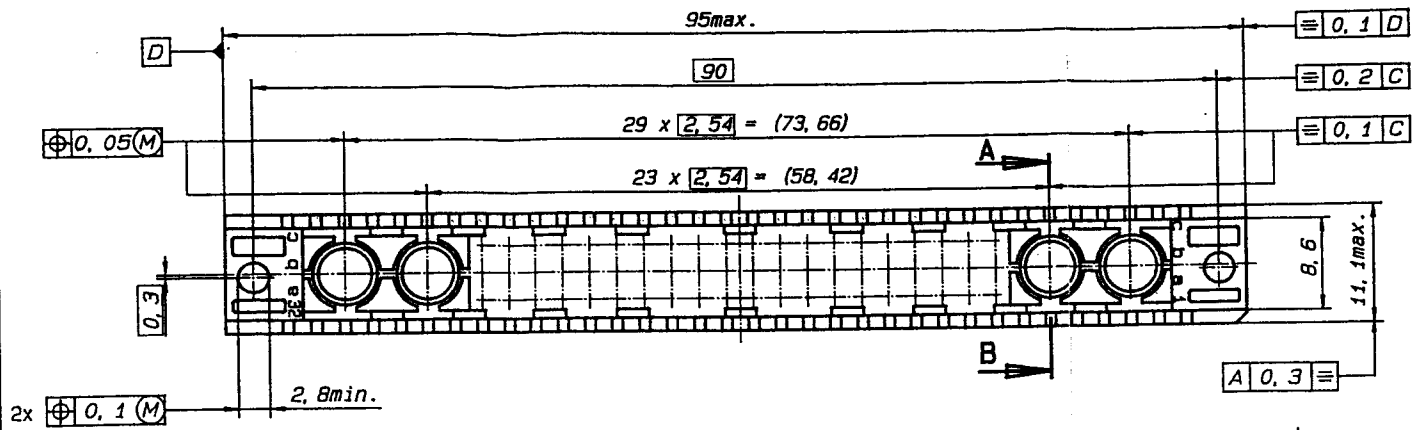
PLEASE CHECK WWW.MOLEX.COM FOR LATEST PART INFORMATION

PART NO.
DWG. NO.

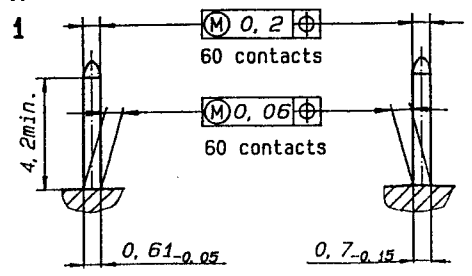


FIRST ANGLE PROJECTION		REVISE ONLY ON CAD SYSTEM		SH.	REV.
UNLESS OTHERWISE SPECIFIED TOLERANCES: ANGULAR ±2°		DRWG BY	SIGN	CAD/CAM PROJECT NAME	
INCH METRIC		Ca		60393231	
3 PLACE ± .	±	CHK'D BY	SIGN	THIS DRAWING CONTAINS INFORMATION THAT IS PROPRIETARY TO MOLEX INC. & SHOULD NOT BE USED WITHOUT WRITTEN PERMISSION	
2 PLACE ± .	±	KN		TITLE	
1 PLACE ± .	±	APP'D BY	SIGN	60 pos. Male connector DIN 41612 style M (C-Pin) inverted / Dimensions	
DRAFT WHERE APPLICABLE MUST REMAIN WITHIN DIMENSIONS		SCALE		SHEET NO. DATE	
DESIGN DIMENSION	<input type="checkbox"/> MM	2:1		1 OF 3 95/05/23	
EQUIVALENT DIMENSION	<input type="checkbox"/> MM	PART NO.		DWG NO.	
	<input type="checkbox"/> IN.	see sh. no. 2 of 3		603-6093-23	
IF TWO DIMENSIONS ARE SHOWN THE UPPER IS THE DESIGN DIMENSION, LOWER IS SECONDARY		SCALE		SIZE	
				B	

Section A-B
(without contacts)



View X
5:1



View W
5:1

NO RELEASE
REFERENCE
USE ONLY

RoHS COMPLIANT

EC NO: 12006-0679 DRAWN BY: SHANKAR CHECKED BY: CHIKO.SSUDHIR APPROVED BY: APPR.SSUDHIR	QUALITY SYMBOLS	GENERAL TOLERANCES (UNLESS SPECIFIED)	DIMENSION STYLE	SCALE	DESIGN UNITS	THIRD ANGLE PROJECTION
	$\nabla \rightarrow 0$ $\nabla \rightarrow 0$	mm ± INCH ± 4 PLACES ± 3 PLACES ±0.05 ± 2 PLACES ±0.1 ± 1 PLACE ±0.15 ± ANGULAR ± 2 °	MM ONLY	NTS	METRIC	<input checked="" type="checkbox"/> THIRD ANGLE <input type="checkbox"/> PROJECTION
			DRAWN BY: SHANKAR DATE: 2006/06/06	TITLE: ASSY DIN 41612.STYLE M INVERTED, 60 POS MALE C-PIN, CONNECTOR		
			CHECKED BY: SSUDHIR DATE: 2006/06/06	APPROVED BY: SSUDHIR DATE: 2006/06/06		
			MATERIAL NO. SEE SHEET 2		DOCUMENT NO. SD-85017-003	SHEET NO. 1 OF 3
DRAFT WHERE APPLICABLE MUST REMAIN WITHIN DIMENSIONS						
THIS DRAWING CONTAINS INFORMATION THAT IS PROPRIETARY TO MOLEX INCORPORATED AND SHOULD NOT BE USED WITHOUT WRITTEN PERMISSION						

60P-6093-0731-9	85017-0282	no	2	----- 2	1, 2, 3...20	a+b+c
60P-6093-0731-7	85017-0294	no	2	Wire wrap 13, 3	1, 2, 3...20	a+b+c
60P-6093-0731-6	85017-0268	no	2	Wire wrap 16, 4	1, 2, 3...20	a+b+c
60P-6093-072V-9	85017-0115	yes	2	----- 2	1, 2, 3...20	a+b+c
60P-6093-072V-8	85017-0103	yes	2	Wire wrap 9, 4	1, 2, 3...20	a+b+c
60P-6093-072V-7	85017-0098	yes	2	Wire wrap 13, 3	1, 2, 3...20	a+b+c
60P-6093-072V-6	85017-0086	yes	2	Wire wrap 16, 4	1, 2, 3...20	a+b+c
60P-6093-0722-9	85017-0024	no	1	----- 2	1, 2, 3...20	a+b+c
Engineering number	Ordering code	Molex std.	Perform. level hard gold acc. MIL-G45204	Termination / L	Contact sequence / row	

RoHS COMPLIANT



EC NO: 12006-0679 DRW: SHANKAR 2006/06/06 CHKD: SSUDHIR 2006/06/06 APPR: SSUDHIR 2006/06/06 A	QUALITY SYMBOLS	GENERAL TOLERANCES (UNLESS SPECIFIED)	DIMENSION STYLE MM ONLY	SCALE NTS	DESIGN UNITS METRIC	<input checked="" type="checkbox"/> THIRD ANGLE PROJECTION	
	▼-0 ▽-0	4 PLACES ± 3 PLACES ± 2 PLACES ± 1 PLACE ±	mm INCH ± ± ± ± ± ± ± ±	DRAWN BY SHANKAR 2006/06/06	DATE 2006/06/06	TITLE ASSY DIN 41612 STYLE M INVERTED, 60 POS MALE C-PIN, CONNECTOR	
		ANGULAR ± °		CHECKED BY SSUDHIR 2006/06/06	DATE 2006/06/06	<input checked="" type="checkbox"/> Molex MOLEX INCORPORATED	
		DRAFT WHERE APPLICABLE MUST REMAIN WITHIN DIMENSIONS		APPROVED BY SSUDHIR 2006/06/06	DATE 2006/06/06	MATERIAL NO. SEE CHART	DOCUMENT NO. SD-85017-003
						SHEET NO. 2 OF 3	

1. General : Technical Data
60pos. Male connector acc.DIN 41612 style M inverted
(C-Pin)
2. Material :
 - 2.1 Moulding material : Thermoplastic Polyester GV30 grey RAL 7032
 - 2.1.1 Moulding material
burning properties acc. to UL94 V0
 - 2.1.2 Resistance against
solvents : good
 - 2.2 Pin contact : CuSn
 - 2.2.1 Contact plating : Performance level I or II (Test acc.DIN 41612 part.5)
3. Printing : Part.No., date of manufacturing



RoHS COMPLIANT

EC NO: 12006-0679 DRAWN BY: SHANKAR CHECKED BY: SSUDHIR APPROVED BY: SSUDHIR	DESCRIPTION	QUALITY SYMBOLS ▽=0 ▽-0	GENERAL TOLERANCES (UNLESS SPECIFIED)		DIMENSION STYLE	SCALE	DESIGN UNITS	THIRD ANGLE PROJECTION
			m/m	INCH	MM ONLY	NTS	METRIC	
REV			4 PLACES ±	±	DRAWN BY	DATE	TITLE	ASSY DIN 41612 STYLE M INVERTED, 60 POS MALE C-PIN, CONNECTOR
A			3 PLACES ±	±	SHANKAR	2006/06/06		
			2 PLACES ±	±	CHECKED BY	DATE		
			1 PLACE ±	±	SSUDHIR	2006/06/06		
			ANGULAR ± °		APPROVED BY	DATE		
					SSUDHIR	2006/06/06		MOLEX MOLEX INCORPORATED
			DRAFT WHERE APPLICABLE MUST REMAIN WITHIN DIMENSIONS		MATERIAL NO.		DOCUMENT NO.	SHEET NO.
					SEE SHEET 2		SD-85017-003	3 OF 3
					THIS DRAWING CONTAINS INFORMATION THAT IS PROPRIETARY TO MOLEX INCORPORATED AND SHOULD NOT BE USED WITHOUT WRITTEN PERMISSION			