

**PLEASE CHECK WWW.MOLEX.COM FOR LATEST PART INFORMATION**

**Part Number:** [0795305001](#)  
**Status:** **Active**  
**Overview:** [microcross\\_dvi](#)  
**Description:** MicroCross™ ADD2-N DVI Card, PCIe, 4X ATX, Standard Bracket

**Documents:**

[Packaging Specification \(PDF\)](#) [RoHS Certificate of Compliance \(PDF\)](#)  
[Drawing \(PDF\)](#)

**General**

Product Family	I/O Connectors
Series	<a href="#">79530</a>
Application	N/A
Comments	Non Lane Reversed, Standard Bracket
Component Type	DVI Card
Overview	<a href="#">microcross_dvi</a>
Product Name	MicroCross™DVI
Type	N/A

**Physical**

Circuits (Loaded)	0
Circuits Detail	n/a
Color - Resin	Natural
Keying to Mating Part	None
Lock to Mating Part	None
Material - Metal	Steel
Material - Plating Mating	n/a
Material - Plating Termination	Tin
Material - Resin	High Temperature Thermoplastic
Orientation	N/A
PCB Retention	N/A
Packaging Type	Bag
Panel Mount	N/A
Pitch - Mating Interface (in)	0.000 In
Pitch - Mating Interface (mm)	0.00 mm
Plating min: Mating (µin)	30
Plating min: Mating (µm)	0.75
Plating min: Termination (µin)	100
Plating min: Termination (µm)	2.5
Polarized to Mating Part	N/A
Termination Interface: Style	N/A

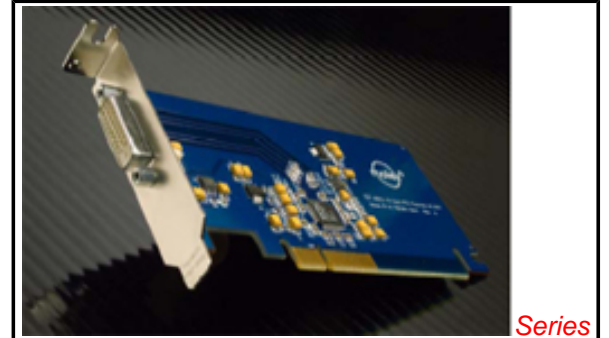
**Electrical**

Current - Maximum per Contact	N/A
Grounding to Panel	None

**Material Info**

**Reference - Drawing Numbers**

Sales Drawing	SD-79530-001
Test Summary	TS-79530-005



*image - Reference only*

Series

**EU RoHS**

**Not RoHS Compliant**  
**REACH SVHC**  
**Not Reviewed**  
**Halogen-Free**  
**Status**  
**Not Reviewed**

**China RoHS**



**Need more information on product environmental compliance?**

Email [productcompliance@molex.com](mailto:productcompliance@molex.com)  
For a multiple part number RoHS Certificate of Compliance, [click here](#)

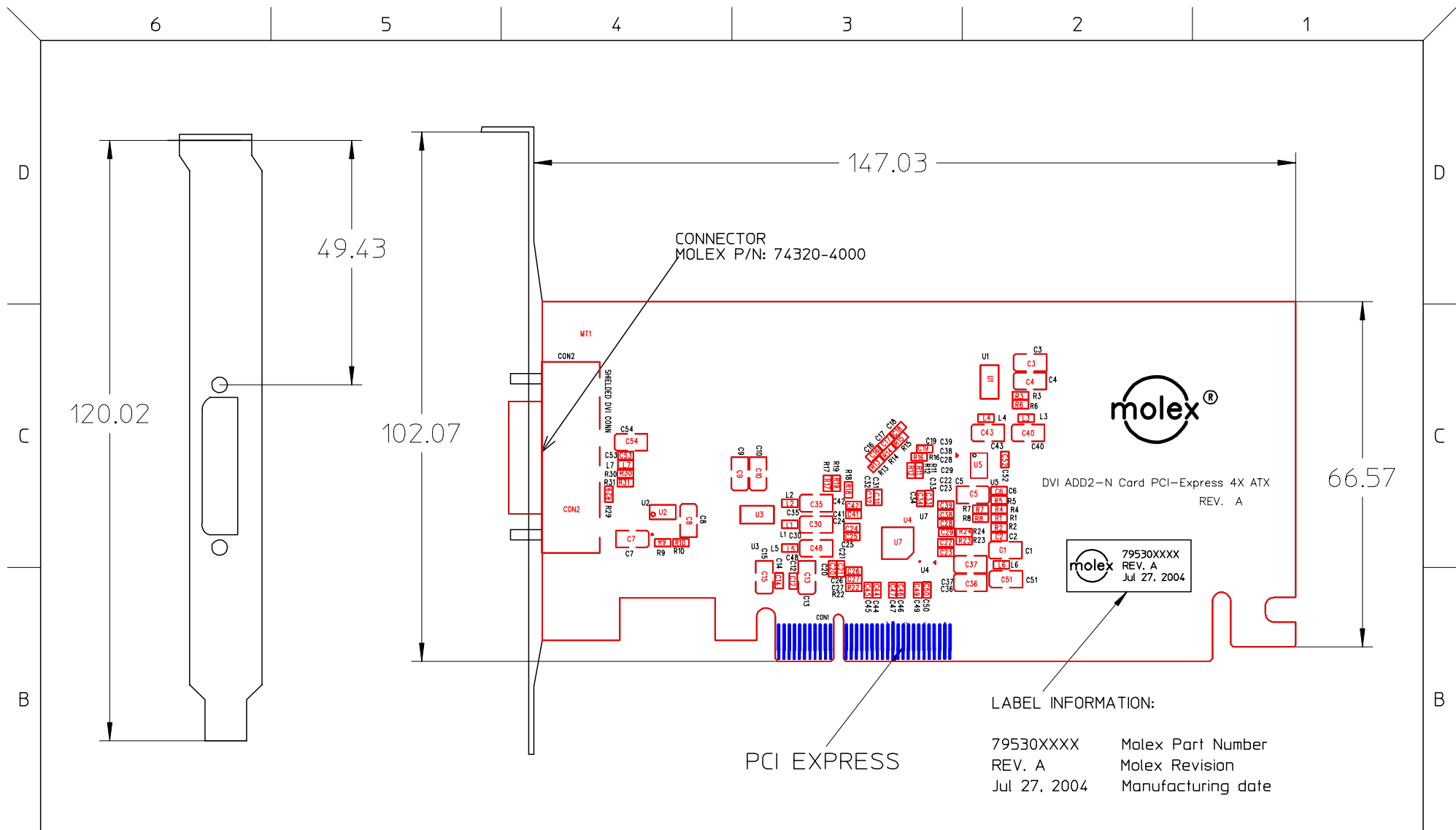
Please visit the [Contact Us](#) section for any non-product compliance questions.

**Search Parts in this Series**

[79530Series](#)

**Mates With**

[79917](#) , [74320](#)



LABEL INFORMATION:  
 79530XXXX Molex Part Number  
 REV. A Molex Revision  
 Jul 27, 2004 Manufacturing date

ENTER DESCRIPTION EC NO: MEX2005-0015 DRWN: LUB10 CHKD: ANERI APPR: GVILLAGR 2004/07/27 2004/07/27 2004/07/28	QUALITY SYMBOLS ▴=0 ▽=0	GENERAL TOLERANCES (UNLESS SPECIFIED)		DIMENSION STYLE MM ONLY		SCALE ---	DESIGN UNITS METRIC	THIRD ANGLE PROJECTION	
		4 PLACES	± ---	± ---	DRAWN BY ANERI	DATE 2004/06/18	TITLE DVI ADD2-N CARD PCI-EXPRESS 4X ATX		
		3 PLACES	± ---	± ---	CHECKED BY EURIAS	DATE 2004/06/18			
		2 PLACES	± ---	± ---	APPROVED BY MVILLASE	DATE 2004/06/18	MoleX MOLEX INCORPORATED		
1 PLACE	± ---	± ---	ANGULAR ±1/2°		MATERIAL NO. 795305001	DOCUMENT NO. SD-79530-001	SHEET NO. 1 OF 1		
DRAFT WHERE APPLICABLE MUST REMAIN WITHIN DIMENSIONS		THIS DRAWING CONTAINS INFORMATION THAT IS PROPRIETARY TO MOLEX INCORPORATED AND SHOULD NOT BE USED WITHOUT WRITTEN PERMISSION							