

PLEASE CHECK WWW.MOLEX.COM FOR LATEST PART INFORMATION

Part Number: [0930705001](#)
Status: **Active**
Overview: rast_25_connector_system
Description: 2.50mm (.098") Pitch Appli-Mate RAST 2.5 Header, Vertical, 13 Circuits, Glow Wire Compatible, with Latch

Documents:

[3D Model](#) [RoHS Certificate of Compliance \(PDF\)](#)
[Drawing \(PDF\)](#)

Agency Certification

UL E29179

General

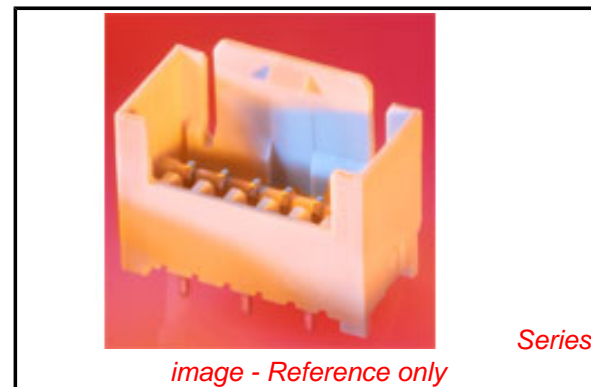
Product Family PCB Headers
 Series [93070](#)
 Application Wire-to-Board
 Overview [rast_25_connector_system](#)
 Product Name RAST 2.5

Physical

Breakaway No
 Circuits (Loaded) 13
 Circuits Detail 13
 Color - Resin Natural
 Durability (mating cycles max) 10
 First Mate / Last Break No
 Flammability 94V-0
 Glow-Wire Compliant Yes
 Guide to Mating Part No
 Keying to Mating Part None
 Lock to Mating Part Yes
 Material - Metal Brass
 Material - Plating Mating Tin
 Material - Plating Termination Tin
 Material - Resin Nylon
 Number of Rows 1
 Orientation Vertical
 PC Tail Length (in) 0.130 In
 PC Tail Length (mm) 3.30 mm
 PCB Locator Yes
 PCB Retention None
 PCB Thickness Recommended (in) 0.059 In
 PCB Thickness Recommended (mm) 1.50 mm
 Packaging Type Carton
 Pitch - Mating Interface (in) 0.098 In
 Pitch - Mating Interface (mm) 2.50 mm
 Polarized to PCB Yes
 Stackable No
 Surface Mount Compatible (SMC) No
 Temperature Range - Operating -20C TO +120C
 Termination Interface: Style Through Hole

Electrical

Current - Maximum per Contact 6A
 Voltage - Maximum 32V



EU RoHS

**ELV and RoHS
 Compliant
 REACH SVHC
 Not Reviewed
 Halogen-Free
 Status
 Not Reviewed**

China RoHS



**Need more information on product
 environmental compliance?**

Email productcompliance@molex.com
 For a multiple part number RoHS Certificate of Compliance, [click here](#)

Please visit the [Contact Us](#) section for any non-product compliance questions.

Search Parts in this Series
[93070Series](#)

Material Info

Reference - Drawing Numbers

Packaging Specification

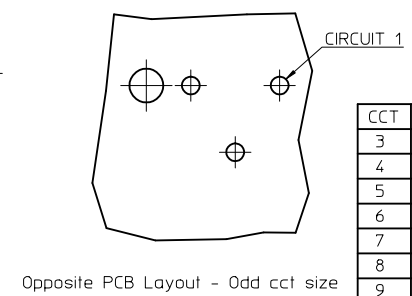
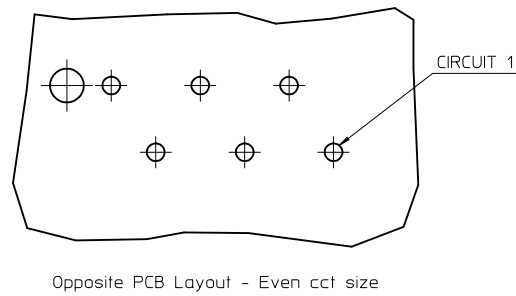
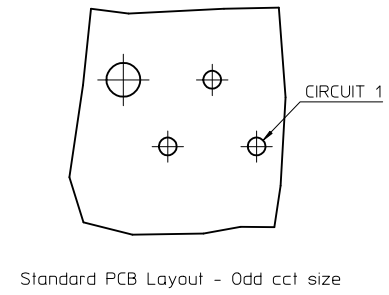
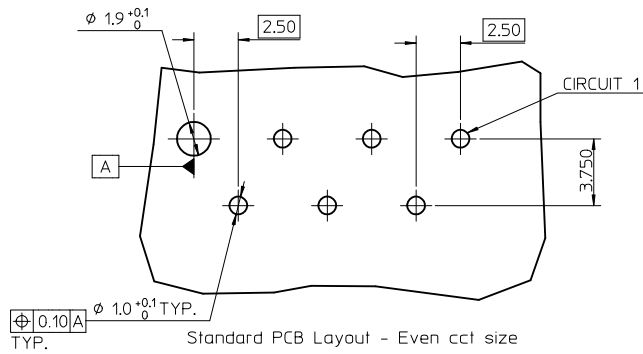
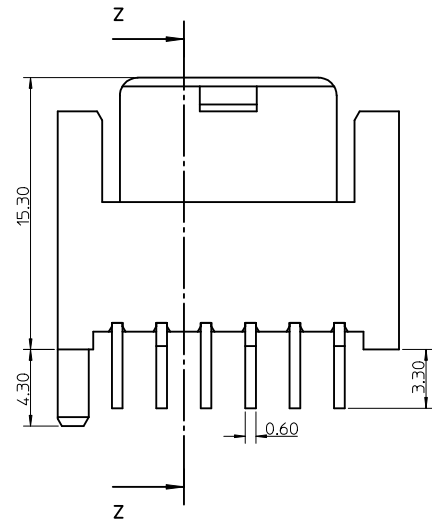
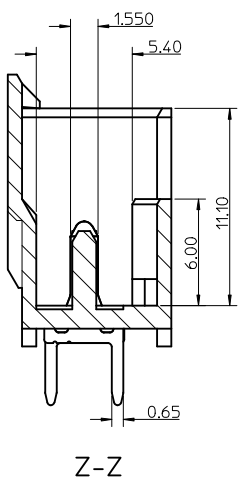
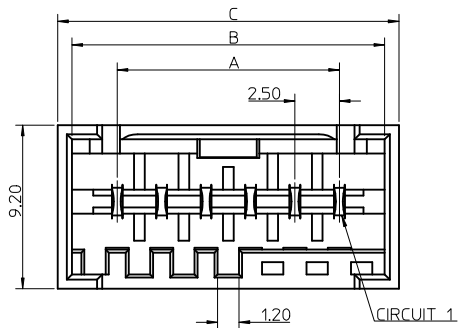
PK-93070-001

Sales Drawing

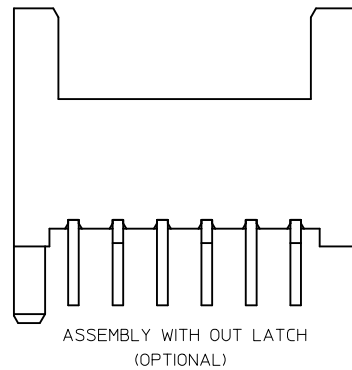
SD-93070-001

This document was generated on 06/08/2010

PLEASE CHECK WWW.MOLEX.COM FOR LATEST PART INFORMATION



| CCT | A | B | C |
|-----|-------|-------|-------|
| 3 | 5.00 | 10.10 | 11.70 |
| 4 | 7.50 | 12.60 | 14.20 |
| 5 | 10.00 | 15.10 | 16.70 |
| 6 | 12.50 | 17.60 | 19.20 |
| 7 | 15.00 | 20.10 | 21.70 |
| 8 | 17.50 | 22.60 | 24.20 |
| 9 | 20.00 | 25.10 | 26.70 |
| 10 | 22.50 | 27.60 | 29.20 |
| 11 | 25.00 | 30.10 | 31.70 |
| 12 | 27.50 | 32.60 | 34.20 |
| 13 | 30.00 | 35.10 | 36.70 |
| 14 | 32.50 | 37.60 | 39.20 |
| 15 | 35.00 | 40.10 | 41.70 |



NOTES:

1. MATERIAL: HOUSING - PA66 25% G/F, UL94 V-0
COLOUR: NATURAL
TERMINAL - BRASS
PLATING - 3-7um Sn over 1.27um Min Ni
2. PARTS PACKED AS PER PK-90370-001
3. PRODUCT SPECIFICATION: PS-93070-001
4. RECOMMENDED PCB THICKNESS: 1.5+/-0.14mm

| | | | | | | | | |
|--|---|---|---------|--|--|--|---|-------------------------------------|
| ADDED NEW P/NS EC NO: E2010-0255 DRAWN: TOURISH 2010/01/13 CHKD: BRITTLE 2010/01/19 APPR: BMAGUIRE 2010/01/19 | QUALITY SYMBOLS $\nabla=0$ $\nabla=0$ | GENERAL TOLERANCES (UNLESS SPECIFIED) | | DIMENSION STYLE MM ONLY | | SCALE 5:1 | DESIGN UNITS METRIC | THIRD ANGLE PROJECTION |
| | | 4 PLACES \pm --- \pm --- 3 PLACES ± 0.05 \pm --- 2 PLACES ± 0.10 \pm --- 1 PLACE ± 0.20 \pm --- ANGULAR $\pm 2^\circ$ | mm INCH | DRAWN BY TOURISH CHECKED BY BRITTLE APPROVED BY BMAGUIRE | DATE 2008/03/14 DATE 2008/03/14 DATE 2008/03/14 | TITLE RAST 2.5 APPLI-MATE VERTICAL MALE HEADER 2.5 PITCH | MOLEX MOLEX INCORPORATED | DOCUMENT NO. SD-93070-001 |
| DRAFT WHERE APPLICABLE MUST REMAIN WITHIN DIMENSIONS | | SEE SHEET 2&3 | | THIS DRAWING CONTAINS INFORMATION THAT IS PROPRIETARY TO MOLEX INCORPORATED AND SHOULD NOT BE USED WITHOUT WRITTEN PERMISSION | | | | |

3 CIRCUIT

| MOLEX PART NO. | BLOCKED POSITION KEYS | TERMINAL VOID POSITION | CONFIGURATION | LATCH | CCT 1 LOCATION |
|----------------|-----------------------|------------------------|---------------|-------|----------------|
| 93070-0001 | NONE | NONE | | YES | STANDARD |
| 93070-0002 | b d | NONE | | YES | STANDARD |
| 93070-0003 | b c | NONE | | YES | STANDARD |
| 93070-0004 | d | NONE | | YES | STANDARD |
| 93070-0005 | a | NONE | | YES | STANDARD |
| 93070-0006 | a b | NONE | | YES | STANDARD |
| 93070-0007 | a c | NONE | | YES | STANDARD |
| 93070-0008 | a d | NONE | | YES | STANDARD |
| 93070-0009 | c d | NONE | | YES | STANDARD |
| 93070-0010 | b | NONE | | YES | STANDARD |

4 CIRCUIT

| MOLEX PART NO. | BLOCKED POSITION KEYS | TERMINAL VOID POSITION | CONFIGURATION | LATCH | CCT 1 LOCATION |
|----------------|-----------------------|------------------------|---------------|-------|-----------------|
| 93070-0501 | NONE | NONE | | YES | STANDARD |
| 93070-0502 | b c | NONE | | YES | STANDARD |
| 93070-0503 | b c | CCT 4 | | YES | STANDARD |
| 93070-0504 | c d | NONE | | YES | STANDARD |
| 93070-0505 | NONE | CCT 1 | | YES | STANDARD |
| 93070-0601 | b c | NONE | | YES | OPPOSITE |
| 93070-0506 | b | NONE | | YES | STANDARD |
| 93070-0507 | c | NONE | | YES | STANDARD |
| 93070-0508 | d | NONE | | YES | STANDARD |
| 93070-0509 | a c d | NONE | | YES | STANDARD |
| 93070-0510 | b c d | NONE | | YES | STANDARD |

6 CIRCUIT

| MOLEX PART NO. | BLOCKED POSITION KEYS | TERMINAL VOID POSITION | CONFIGURATION | LATCH | CCT 1 LOCATION |
|----------------|-----------------------|------------------------|---------------|-------|----------------|
| 93070-1501 | NONE | NONE | | YES | STANDARD |
| 93070-1502 | d f | CCT 2, 5 | | YES | STANDARD |
| 93070-1503 | c e | NONE | | YES | STANDARD |
| 93070-1505 | d f | NONE | | YES | STANDARD |
| 93070-1506 | b d f | CCT 4, 5 | | YES | STANDARD |
| 93070-1507 | NONE | CCT 2 | | YES | STANDARD |
| 93070-1508 | c f | CCT 2 | | YES | STANDARD |
| 93070-1509 | d | NONE | | YES | STANDARD |
| 93070-1510 | a b c e f | NONE | | YES | STANDARD |
| 93070-1511 | e f | NONE | | YES | STANDARD |

5 CIRCUIT

| MOLEX PART NO. | BLOCKED POSITION KEYS | TERMINAL VOID POSITION | CONFIGURATION | LATCH | CCT 1 LOCATION |
|----------------|-----------------------|------------------------|---------------|-------|-----------------|
| 93070-1001 | NONE | NONE | | YES | STANDARD |
| 93070-1002 | c d | NONE | | YES | STANDARD |
| 93070-1003 | a d f | NONE | | YES | STANDARD |
| 93070-1101 | NONE | NONE | | YES | OPPOSITE |
| 93070-1004 | d | NONE | | YES | STANDARD |
| 93070-1005 | a b e f | NONE | | YES | STANDARD |
| 93070-1006 | b c d e | NONE | | YES | STANDARD |

NOTES:
 1. + DENOTES TERMINAL VOID POSITION
 ⊕ DENOTES TERMINAL LOADED POSITION

| | | | | | | |
|--|--|--|--|---------------------|--------------|------------------------|
| SEE SHEET 1 ELEC NO: E2010-0255 DRAWN: TOURISH 2010/01/13 CHKD: BRITTLE 2010/01/19 APPR: BMAGUIRE 2010/01/19 | QUALITY SYMBOLS | GENERAL TOLERANCES (UNLESS SPECIFIED) | DIMENSION STYLE | SCALE | DESIGN UNITS | THIRD ANGLE PROJECTION |
| | $\nabla=0$ $\nabla=0$ | mm INCH 4 PLACES ± --- ± --- 3 PLACES ± 0.05 ± --- 2 PLACES ± 0.10 ± --- 1 PLACE ± 0.20 ± --- ANGULAR ± 2° | MM ONLY DRAWN BY DATE TOURISH 2008/03/14 CHECKED BY DATE BRITTLE 2008/03/14 APPROVED BY DATE BMAGUIRE 2008/03/14 | 1:1 | METRIC | |
| | DRAFT WHERE APPLICABLE MUST REMAIN WITHIN DIMENSIONS | SEE CHARTS MATERIAL NO. SIZE 1 | TITLE RAST 2.5 APPLI-MATE VERTICAL MALE HEADER 2.5 PITCH MOLEX INCORPORATED DOCUMENT NO. SD-93070-001 | SHEET NO. 2 OF 3 | | |
| | THIS DRAWING CONTAINS INFORMATION THAT IS PROPRIETARY TO MOLEX INCORPORATED AND SHOULD NOT BE USED WITHOUT WRITTEN PERMISSION | | | | | |

7 CIRCUIT

| MOLEX PART NO. | BLOCKED POSITION KEYS | TERMINAL VOID POSITION | CONFIGURATION | LATCH | CCT 1 LOCATION |
|----------------|-----------------------|------------------------|---------------|-------|----------------|
| 93070-2001 | NONE | NONE | | YES | STANDARD |
| 93070-2002 | a f | CCT 2, 6 | | YES | STANDARD |
| 93070-2003 | d g | CCT 4 | | YES | STANDARD |
| 93070-2004 | a e | CCT 4 | | YES | STANDARD |
| 93070-2005 | d f g | CCT 4 | | YES | STANDARD |
| 93070-2006 | a f | CCT 4 | | YES | STANDARD |
| 93070-2007 | a | NONE | | YES | STANDARD |
| 93070-2008 | NONE | CCT 2 | | YES | STANDARD |
| 93070-2009 | a | CCT 4 | | YES | STANDARD |
| 93070-2010 | h | CCT 2 | | YES | STANDARD |
| 93070-2011 | b e g | NONE | | YES | STANDARD |

8 CIRCUIT

| MOLEX PART NO. | BLOCKED POSITION KEYS | TERMINAL VOID POSITION | CONFIGURATION | LATCH | CCT 1 LOCATION |
|----------------|-----------------------|------------------------|---------------|-------|-----------------|
| 93070-2501 | NONE | NONE | | YES | STANDARD |
| 93070-2502 | c f h i | NONE | | YES | STANDARD |
| 93070-2503 | b c d h i | CCT 4, 7 | | YES | STANDARD |
| 93070-2601 | NONE | CCT 4, 7 | | YES | OPPOSITE |
| 93070-2504 | b c d h i | NONE | | YES | STANDARD |

9 CIRCUIT

| MOLEX PART NO. | BLOCKED POSITION KEYS | TERMINAL VOID POSITION | CONFIGURATION | LATCH | CCT 1 LOCATION |
|----------------|-----------------------|------------------------|---------------|-------|-----------------|
| 93070-3001 | NONE | NONE | | YES | STANDARD |
| 93070-3002 | ALL | CCT 2, 5, 8 | | YES | STANDARD |
| 93070-3101 | NONE | CCT 3, 5, 8 | | YES | OPPOSITE |
| 93070-3003 | c d e i j | CCT 3, 5, 8 | | YES | STANDARD |
| 93070-3004 | NONE | CCT 2, 5, 8 | | YES | STANDARD |

10 CIRCUIT

| MOLEX PART NO. | BLOCKED POSITION KEYS | TERMINAL VOID POSITION | CONFIGURATION | LATCH | CCT 1 LOCATION |
|----------------|-----------------------|------------------------|---------------|-------|----------------|
| 93070-3501 | NONE | NONE | | YES | STANDARD |
| 93070-3502 | NONE | CCT 2, 5, 7, 9 | | YES | STANDARD |
| 93070-3503 | a b d e f g i j | NONE | | YES | STANDARD |

11 CIRCUIT

| MOLEX PART NO. | BLOCKED POSITION KEYS | TERMINAL VOID POSITION | CONFIGURATION | LATCH | CCT 1 LOCATION |
|----------------|-----------------------|------------------------|---------------|-------|----------------|
| 93070-4001 | NONE | NONE | | YES | STANDARD |

12 CIRCUIT

| MOLEX PART NO. | BLOCKED POSITION KEYS | TERMINAL VOID POSITION | CONFIGURATION | LATCH | CCT 1 LOCATION |
|----------------|-----------------------|------------------------|---------------|-------|----------------|
| 93070-4501 | NONE | NONE | | YES | STANDARD |
| 93070-4502 | NONE | CCT 2, 5, 8, 11 | | YES | STANDARD |

13 CIRCUIT

| MOLEX PART NO. | BLOCKED POSITION KEYS | TERMINAL VOID POSITION | CONFIGURATION | LATCH | CCT 1 LOCATION |
|----------------|-----------------------|------------------------|---------------|-------|----------------|
| 93070-5001 | NONE | NONE | | YES | STANDARD |
| 93070-5002 | NONE | CCT 4, 6, 8, 10, 12 | | YES | STANDARD |

14 CIRCUIT

| MOLEX PART NO. | BLOCKED POSITION KEYS | TERMINAL VOID POSITION | CONFIGURATION | LATCH | CCT 1 LOCATION |
|----------------|-----------------------|------------------------|---------------|-------|----------------|
| 93070-5501 | NONE | NONE | | YES | STANDARD |

15 CIRCUIT

| MOLEX PART NO. | BLOCKED POSITION KEYS | TERMINAL VOID POSITION | CONFIGURATION | LATCH | CCT 1 LOCATION |
|----------------|-----------------------|-------------------------|---------------|-------|----------------|
| 93070-6001 | NONE | NONE | | YES | STANDARD |
| 93070-6002 | o p | CCT 4, 6, 8, 10, 12, 14 | | YES | STANDARD |
| 93070-6003 | a d g i j n o p | NONE | | YES | STANDARD |

NOTES:
 1. + DENOTES TERMINAL VOIDED POSITION
 ⊕ DENOTES TERMINAL LOADED POSITION

| | | | | | | |
|--|--|--|--|-------|--------------|------------------------|
| SEE SHEET 1 ELEC NO: E2010-0255 DRAWN: TOURISH 2010/01/13 CHKD: BRUTTLE 2010/01/19 APPR: BMAGUIRE 2010/01/19 | QUALITY SYMBOLS | GENERAL TOLERANCES (UNLESS SPECIFIED) | DIMENSION STYLE | SCALE | DESIGN UNITS | THIRD ANGLE PROJECTION |
| | $\nabla=0$ $\nabla=0$ | mm INCH 4 PLACES ± --- ± --- 3 PLACES ± 0.05 ± --- 2 PLACES ± 0.10 ± --- 1 PLACE ± 0.20 ± --- ANGULAR ± 2° | MM ONLY DRAWN BY DATE TOURISH 2008/03/14 CHECKED BY DATE BRUTTLE 2008/03/14 APPROVED BY DATE BMAGUIRE 2008/03/14 | 1:1 | METRIC | |
| | DRAFT WHERE APPLICABLE MUST REMAIN WITHIN DIMENSIONS | SEE CHARTS | RAST 2.5 APPLI-MATE VERTICAL MALE HEADER 2.5 PITCH | | | |
| | | | MOLEX INCORPORATED MATERIAL NO. SD-93070-001 DOCUMENT NO. SD-93070-001 SHEET NO. 3 OF 3 | | | |