

PLEASE CHECK WWW.MOLEX.COM FOR LATEST PART INFORMATION

Part Number: [0876363012](#)
Status: **Active**
Description: 1.27mm (.050") Pitch DDR DIMM Socket, Vertical, Beige Latch, Single Key, with Beveled Metal Pins, 2.5V Left Voltage Key, 2.67mm (.105") Tail Length, 0.76µm (30µ") Gold (Au) Plating, 184 Circuits, Leadfree

Documents:

[3D Model](#) [Product Specification PS-87736-003 \(PDF\)](#)
[Drawing \(PDF\)](#) [RoHS Certificate of Compliance \(PDF\)](#)

General

Product Family	Memory Module Sockets
Series	87636
Comments	Latches in Beige Color 2.67mm (.105") Tail Length
Component Type	Socket
JEDEC Outline	MO-206
Product Name	DDR DIMM

Physical

Circuits (Loaded)	184
Color - Resin	Black, Natural
Durability (mating cycles max)	25
Entry Angle	Vertical (Top Entry)
Keying to Mating Part	Yes
Material - Metal	Phosphor Bronze
Material - Plating Mating	Gold
Material - Plating Termination	Tin
Material - Resin	High Temperature Thermoplastic
PC Tail Length (in)	0.105 In
PC Tail Length (mm)	2.67 mm
PCB Retention	Yes
PCB Thickness Recommended (in)	0.062 In
PCB Thickness Recommended (mm)	1.60 mm
Packaging Type	Tray
Pitch - Mating Interface (in)	0.050 In
Pitch - Mating Interface (mm)	1.27 mm
Plating min: Mating (µin)	30
Plating min: Mating (µm)	0.75
Plating min: Termination (µin)	100
Plating min: Termination (µm)	2.5
Temperature Range - Operating	-10°C to +85°C
Termination Interface: Style	Through Hole

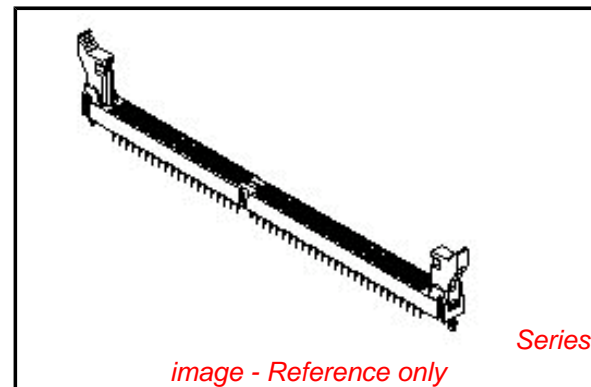
Electrical

Current - Maximum per Contact	1A
Voltage - Maximum	50V
Voltage Key	2.5V, Left

Solder Process Data

Duration at Max. Process Temperature (seconds)	30
Lead-free Process Capability	SMC & Wave Capable (TH only)
Max. Cycles at Max. Process Temperature	1
Process Temperature max. C	240

Material Info



EU RoHS

ELV and RoHS Compliant
REACH SVHC
 Not Reviewed
Halogen-Free Status

China RoHS



Not Reviewed

Need more information on product environmental compliance?

Email productcompliance@molex.com
 For a multiple part number RoHS Certificate of Compliance, [click here](#)

Please visit the [Contact Us](#) section for any non-product compliance questions.

Search Parts in this Series

87636Series

Mates With

JEDEC MO-206 modules

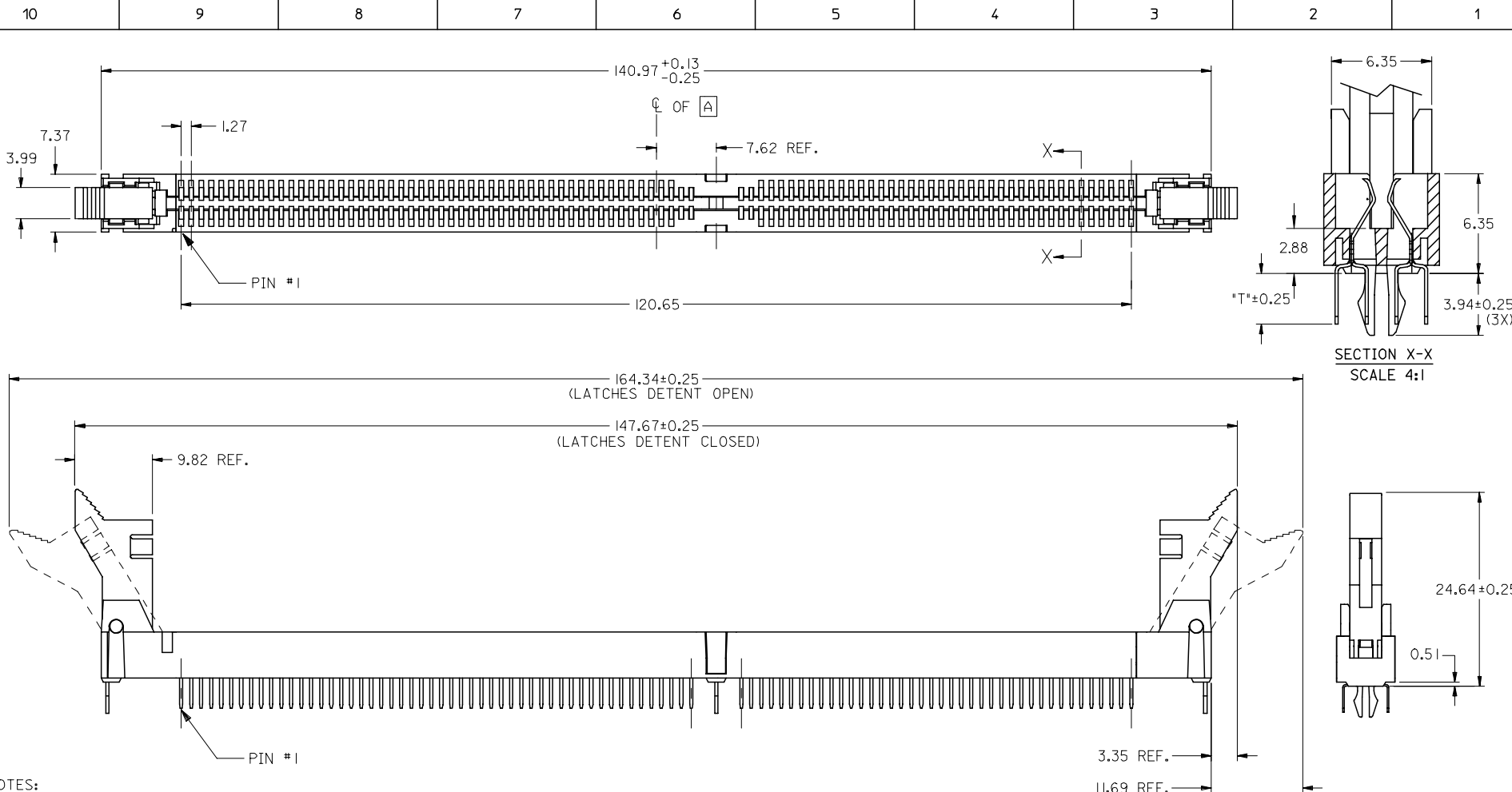
Reference - Drawing Numbers

Product Specification
Sales Drawing

PS-87736-003
SD-87636-001

This document was generated on 04/13/2010

PLEASE CHECK WWW.MOLEX.COM FOR LATEST PART INFORMATION



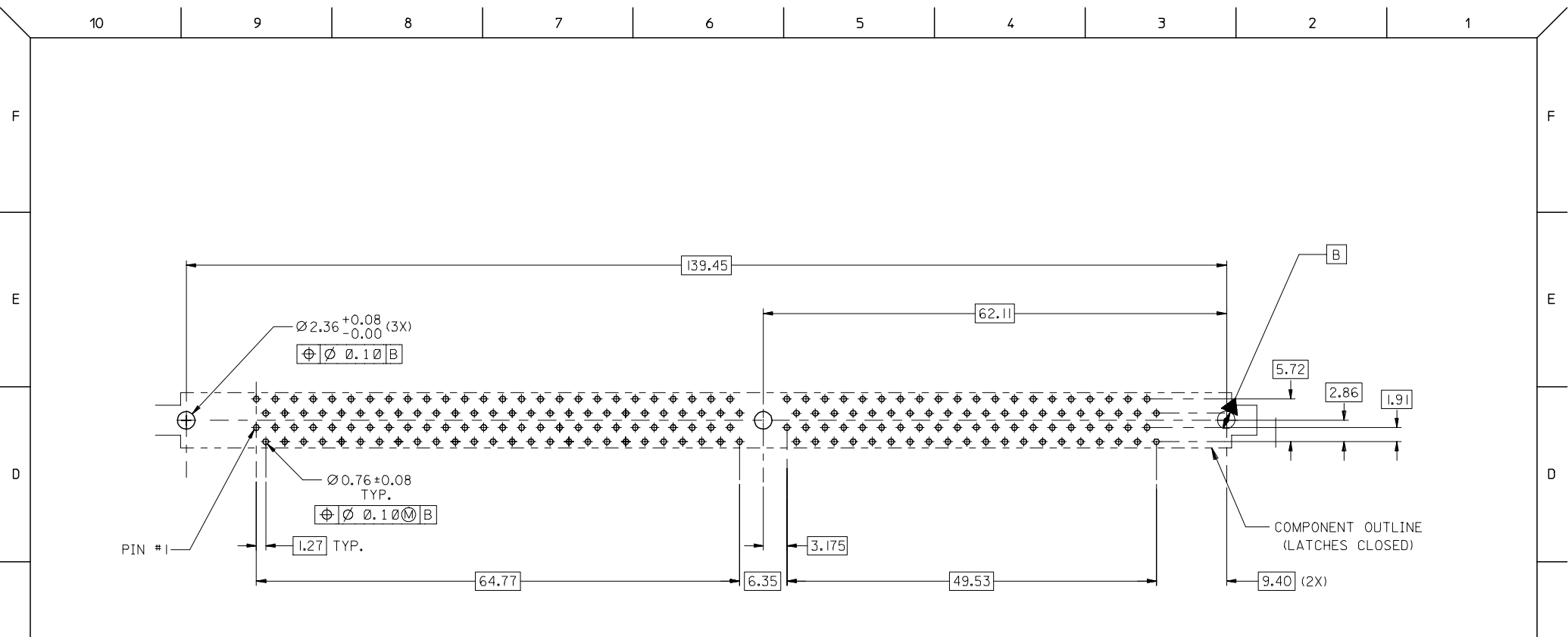
NOTES:

- CARD SLOT ACCEPTS 1.27 ± 0.10 MM MODULE THICKNESS. (MEASURED OVER P.C. PADS).
- REFER TO PRODUCT SPEC. PS-87736-003 FOR PERFORMANCE SPECIFICATIONS.
- RECOMMENDED MODULE LAYOUT SHALL BE PER M0-206.
- RECOMMENDED PLATING ON MODULE PADS: $0.76 \mu\text{M}$ MIN HARD GOLD (Au) OVER $2.0 \mu\text{M}$ MIN NICKEL (Ni).
- PRODUCT WILL HAVE DATE CODE STAMPED ON SIDE OF HOUSING.

MATERIALS:
 HOUSING - LCP, GLASS FILLED, UL94V-0, COLOR: BLACK
 TERMINAL - COPPER ALLOY
 LATCHES - HIGH TEMP NYLON, GLASS FILLED, UL94V-0

PLATING:
 CONTACT AREA: SEE TABLE IN SHEET 3.
 SOLDER TAILS: TIN THICKNESS: $1.91 \mu\text{M}$ / ($75 \mu\text{IN}$) MIN.
 UNDERPLATE: $1.27 \mu\text{M}$ / ($50 \mu\text{IN}$) MIN NICKEL (Ni).

ADD DIMENSION EC NO: S2007-0163 2006/08/17 DRWN:CMTEO CHKD:SHLENI 2006/08/17 APPR:GJLEE 2006/08/18	DESCRIPTION REV	QUALITY SYMBOLS ▽=0 ∇=0	GENERAL TOLERANCES (UNLESS SPECIFIED)	DIMENSION STYLE MM ONLY	SCALE NTS	DESIGN UNITS METRIC	THIRD ANGLE PROJECTION
			4 PLACES ± --- ± ---	DRAWN BY MLONG	DATE 2000/05/10	TITLE DDR DIMM, 1.27MM PITCH 184 CKTS, SINGLE KEY	
			3 PLACES ± --- ± ---	CHECKED BY SQUEK	DATE 2000/05/11		
			2 PLACES ± 0.15 ± ---	APPROVED BY SKTOH	DATE 2000/05/12	MATERIAL NO. SD-87636-001	DOCUMENT NO. SD-87636-001
		1 PLACE ± --- ± ---	ANGULAR ± 3 °	SEE TABLE			
			DRAFT WHERE APPLICABLE MUST REMAIN WITHIN DIMENSIONS				



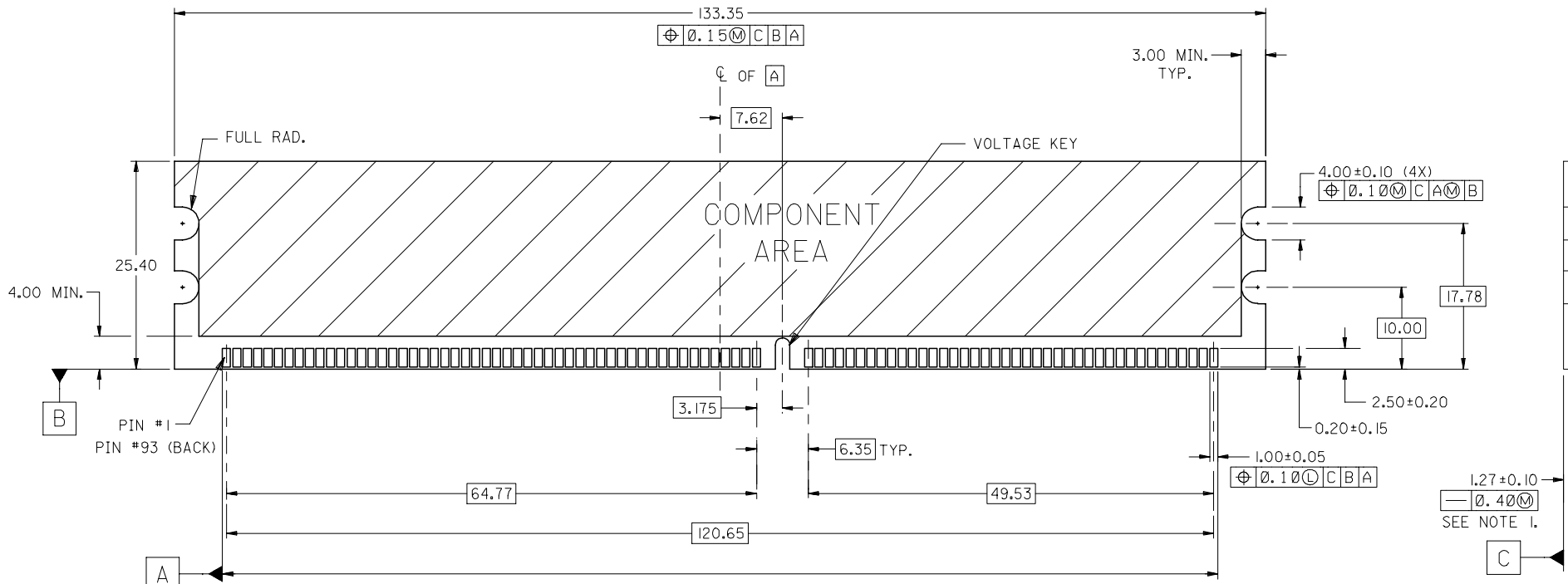
RECOMMENDED P.C. BOARD HOLE PATTERN
(CONNECTOR SIDE)

ADD DIMENSION EC NO: S2007-0163 DRWN:CMTEO CHKD:SHLENI APPR:GJLEE	2006/08/17 2006/08/17 2006/08/18	DESCRIPTION REV	QUALITY SYMBOLS	GENERAL TOLERANCES (UNLESS SPECIFIED)		DIMENSION STYLE MM ONLY		SCALE NTS	DESIGN UNITS METRIC	THIRD ANGLE PROJECTION
			▽=0 ∇=0	mm	INCH	DRAWN BY MLONG	DATE 2000/05/10	TITLE DDR DIMM, 1.27MM PITCH 184 CKTS, SINGLE KEY		
				4 PLACES ± ---	± ---	CHECKED BY SQUEK	DATE 2000/05/11			
				3 PLACES ± ---	± ---	APPROVED BY SKTOH	DATE 2000/05/12	MOLEX INCORPORATED		
				1 PLACE ± ---	± ---	ANGULAR ± 3 °				
				DRAFT WHERE APPLICABLE MUST REMAIN WITHIN DIMENSIONS		SIZE A3	SEE TABLE	DOCUMENT NO. SD-87636-001	SHEET NO. 2 OF 4	

PART NUMBER	DATUM VOLTAGE KEY	PACKAGING TYPE	DIM "T"	RECOMMENDED PCB THICKNESS	LATCH COLOR	CONTACT AREA PLATING
87636-2001	CENTER (1.8V)	TRAY	3.23	2.36	BEIGE	0.38uM/15uIN MIN. GOLD
87636-2002	LEFT (2.5V)					
87636-2011	CENTER (1.8V)					
87636-2012	LEFT (2.5V)					
87636-3001	CENTER (1.8V)		3.23	2.36	BLACK	0.76uM/30uIN MIN. GOLD
87636-3002	LEFT (2.5V)					
87636-3011	CENTER (1.8V)					
87636-3012	LEFT (2.5V)					
87636-2102	LEFT (2.5V)		3.23	2.36	BLACK	0.38uM/15uIN MIN. GOLD

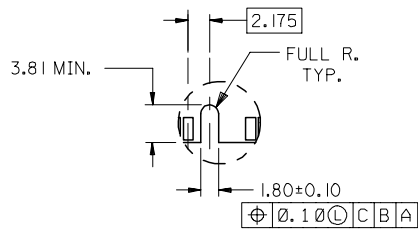
ADD DIMENSION EC NO: S2007-0163 DRWN:CMTEO CHKD:SHLENI APPR:GJLEE	2006/08/17 2006/08/17 2006/08/18	DESCRIPTION REV	QUALITY SYMBOLS ▽=0 ◻=0	GENERAL TOLERANCES (UNLESS SPECIFIED)		DIMENSION STYLE MM ONLY		SCALE NTS	DESIGN UNITS METRIC	THIRD ANGLE PROJECTION	
					mm	INCH	DRAWN BY MLONG	DATE 2000/05/10	TITLE DDR DIMM, 1.27MM PITCH 184 CKTS, SINGLE KEY		
				4 PLACES	± ---	± ---	CHECKED BY SQUEK	DATE 2000/05/11			
				3 PLACES	± ---	± ---	APPROVED BY SKTOH	DATE 2000/05/12	MOLEX INCORPORATED		
				2 PLACES	± 0.15	± ---	MATERIAL NO.	DOCUMENT NO. SD-87636-001			SHEET NO. 3 OF 4
1 PLACE	± ---	± ---	DRAFT WHERE APPLICABLE MUST REMAIN WITHIN DIMENSIONS		SEE TABLE		THIS DRAWING CONTAINS INFORMATION THAT IS PROPRIETARY TO MOLEX INCORPORATED AND SHOULD NOT BE USED WITHOUT WRITTEN PERMISSION				
ANGULAR ± 3 °											

10 9 8 7 6 5 4 3 2 1

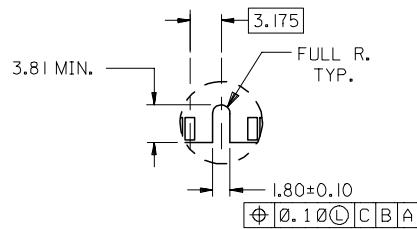


(OUTSIDE EDGE OF END PADS)

RECOMMENDED MODULE LAYOUT
184 CKT 1.8V SHOWN



OFFSET LEFT KEY



CENTERED KEY

NOTES:

1. STRAIGHTNESS OF MODULE APPLIES TO THE AREA FROM THE BOTTOM OF THE CARD UP 4.00 MM.
2. IF TIE BARS ARE ATTACHED TO PADS, THE TIE BAR SHOULD BE ON AN INTERNAL LAYER, SO THAT THE REMNANT CANNOT CAUSE DAMAGE TO THE CONTACTS.

ADD DIMENSION EC NO: S2007-0163 2006/08/17 DRWN:CMTEO 2006/08/17 CHKD:SHLENI 2006/08/18 APPR:GGLLEE	DESCRIPTION REV	QUALITY SYMBOLS ▽=0 ◻=0	GENERAL TOLERANCES (UNLESS SPECIFIED)	DIMENSION STYLE MM ONLY	SCALE NTS	DESIGN UNITS METRIC	THIRD ANGLE PROJECTION	
				DRAWN BY MLONG	DATE 2000/05/10	TITLE DDR DIMM, 1.27MM PITCH 184 CKTS, SINGLE KEY		
				4 PLACES ± --- ± --- 3 PLACES ± --- ± --- 2 PLACES ± 0.15 ± --- 1 PLACE ± --- ± ---	CHECKED BY SQUEK	DATE 2000/05/11		
				ANGULAR ± 3 °	APPROVED BY SKTOH	DATE 2000/05/12	MATERIAL NO.	DOCUMENT NO. SD-87636-001
F1			DRAFT WHERE APPLICABLE MUST REMAIN WITHIN DIMENSIONS	SIZE A3	SEE TABLE	THIS DRAWING CONTAINS INFORMATION THAT IS PROPRIETARY TO MOLEX INCORPORATED AND SHOULD NOT BE USED WITHOUT WRITTEN PERMISSION		

9 8 7 6 5 4 3 2 1