

**PLEASE CHECK WWW.MOLEX.COM FOR LATEST PART INFORMATION**

**Part Number:** [0855435001](#)  
**Status:** **Active**  
**Overview:** [modular\\_plugs\\_jacks](#)  
**Description:** Modular Jack, Right Angle, Fully Shielded, SMT, 8 Circuits

**Documents:**

<a href="#">Application Specification (PDF)</a>	<a href="#">3D Model</a>
<a href="#">Drawing (PDF)</a>	<a href="#">RoHS Certificate of Compliance (PDF)</a>
<a href="#">Packaging Specification (PDF)</a>	

**General**

Product Family	Modular Jacks/Plugs
Series	<a href="#">85543</a>
Component Type	PCB Jack
Magnetic	No
Overview	<a href="#">modular_plugs_jacks</a>
Performance Category	5e
Power over Ethernet (PoE)	N/A
Product Name	RJ45

**Physical**

Color - Resin	Black
Durability (mating cycles max)	500
Inverted / Top Latch	No
Lightpipes/LEDs	None
Material - Metal	Brass, Phosphor Bronze
Material - Plating Mating	Gold
Material - Plating Termination	Tin
Material - Resin	High Temperature Thermoplastic
Orientation	Right Angle (Side Entry)
PCB Retention	Yes
Packaging Type	Embossed Tape on Reel
Plating min: Mating (µin)	50.8
Plating min: Mating (µm)	1.27
Plating min: Termination (µin)	76
Plating min: Termination (µm)	1.9
Ports	1
Positions / Loaded Contacts	8/8
Temperature Range - Operating	-40°C to +80°C
Termination Interface: Style	Surface Mount
Wire/Cable Type	N/A

**Electrical**

Current - Maximum per Contact	1.5A
Shielded	Yes
Voltage - Maximum	125V AC

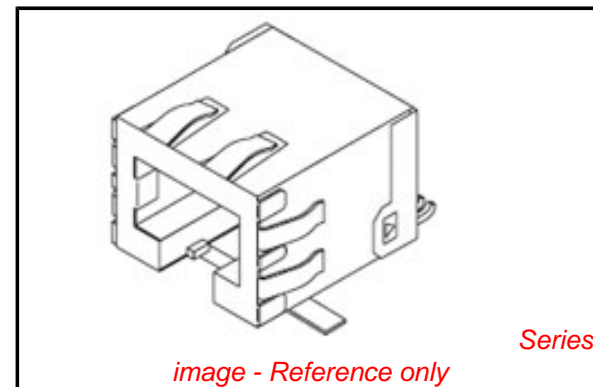
**Solder Process Data**

Duration at Max. Process Temperature (seconds)	45
Lead-free Process Capability	Reflow Capable (SMT only)
Max. Cycles at Max. Process Temperature	3
Process Temperature max. C	260

**Material Info**

**Reference - Drawing Numbers**

Packaging Specification	PK-85542-002
-------------------------	--------------



**EU RoHS**

**ELV and RoHS  
Compliant**  
**REACH SVHC  
Contains SVHC: No**  
**Halogen-Free  
Status**

**China RoHS**



**Need more information on product  
environmental compliance?**

Email [productcompliance@molex.com](mailto:productcompliance@molex.com)  
 For a multiple part number RoHS Certificate of Compliance, [click here](#)

Please visit the [Contact Us](#) section for any non-product compliance questions.

**Search Parts in this Series**

[85543Series](#)

**Mates With**

FCC 68 Plugs

This document was generated on 06/08/2010

**PLEASE CHECK [WWW.MOLEX.COM](http://WWW.MOLEX.COM) FOR LATEST PART INFORMATION**

10 9 8 7 6 5 4 3 2 1

F

E

D

C

B

A

F

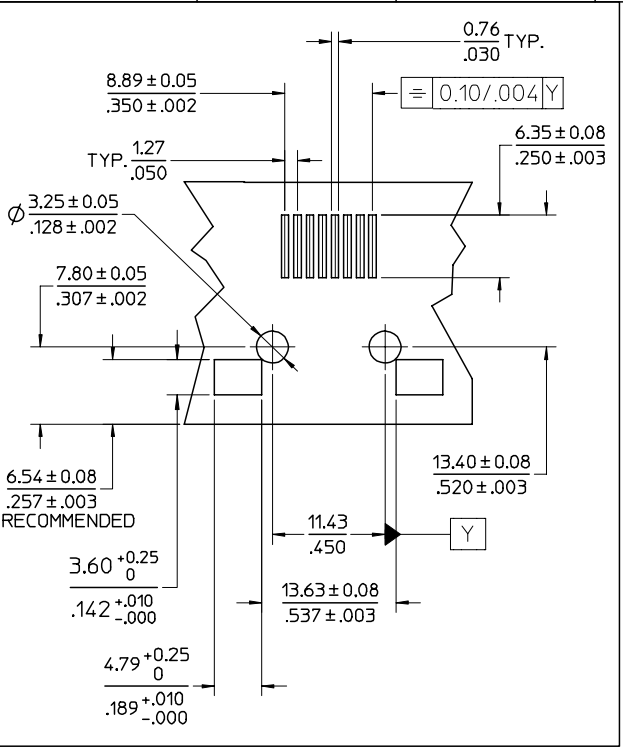
E

D

C

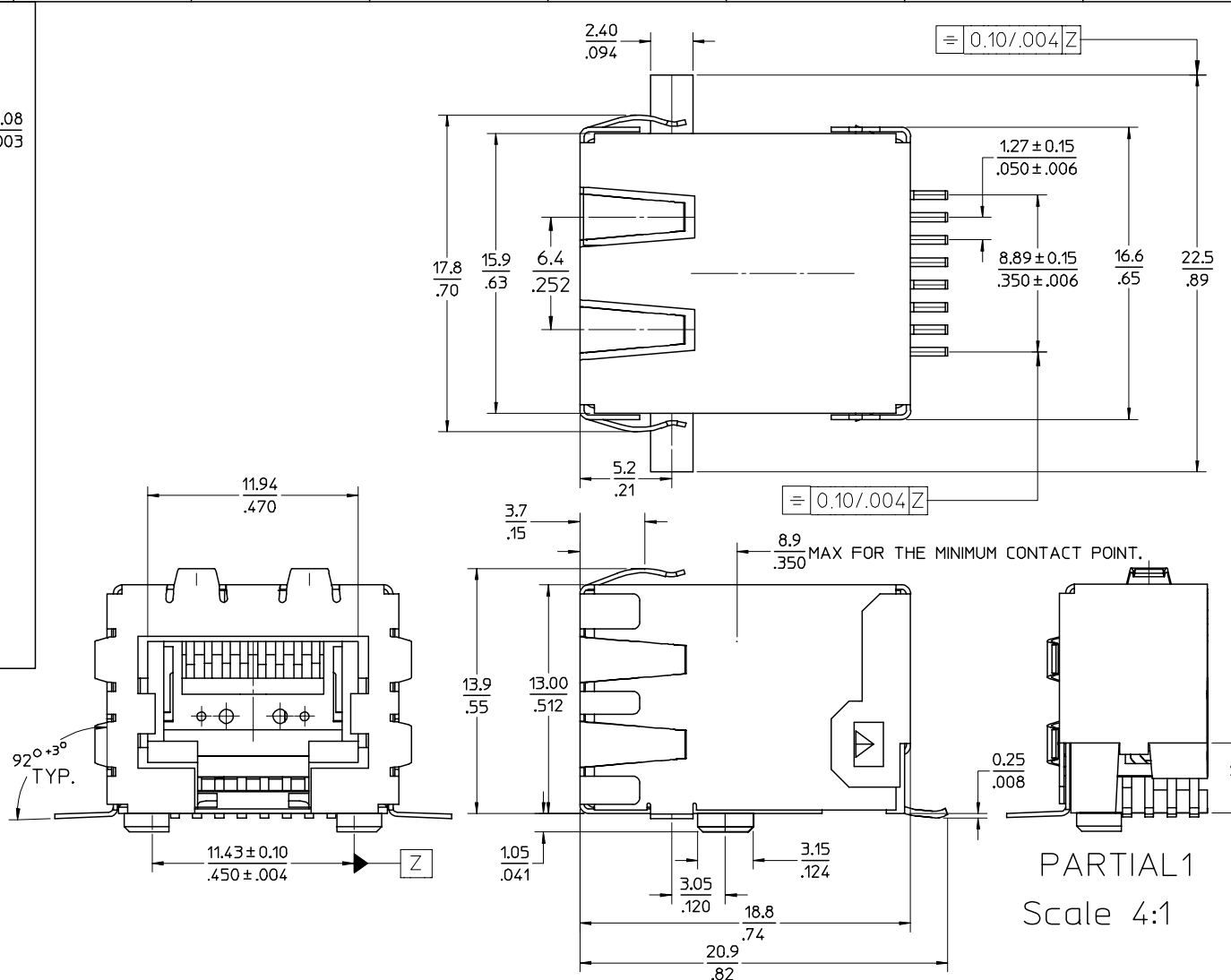
B

A



- NOTES:**
- JACK FOR MATING WITH SHIELDED PLUG (MOLEX 95043 SERIES)
  - PRODUCT SPECIFICATION: PS-95622 AND PS-85505 (SECTION 5.2)
  - PACKAGING SPECIFICATION: PK-85542-002 (BLISTER ON REEL)
  - COPLANARITY OF SIGNAL LEADS: 0.10 MAX
  - EXCEEDS CATEGORY 5E PERFORMANCE.

**TECHNICAL SPECIFICATIONS:**  
**MATERIAL:**  
 HOUSING: LCP GLASS FILLED UL 94V0, COLOUR BLACK.  
 TERMINAL: PHOSPHOR BRONZE PLATED WITH:  
 0.00127/.000050 MIN GOLD IN CONTACT AREA,  
 0.00190/.000075 MIN PURE TIN IN TAIL AREA,  
 BOTH OVER 0.00127/.000050 MIN NICKEL OVERALL.  
 SHIELD: BRASS PLATED WITH 0.0020/.000078 MIN TIN.



PARTIAL1  
Scale 4:1

ORIGINAL EC NO: E2007-0299 DRWN:DBYRNES 2006/10/16 CHKD: 2006/10/16 APPR:EOMAHONY 2006/10/17 A	QUALITY SYMBOLS ▽=0 ▽=0	GENERAL TOLERANCES (UNLESS SPECIFIED) mm INCH 4 PLACES ± --- ± --- 3 PLACES ± --- ± .010 2 PLACES ± 0.25 ± .014 1 PLACE ± 0.35 ± --- ANGULAR ± 2 °	DIMENSION STYLE MM ONLY	SCALE 4:1	DESIGN UNITS METRIC	THIRD ANGLE PROJECTION	
	DRAWN BY DBYRNES	DATE 2006/09/05	TITLE HIGH SPEED R/A FULLY SHIELDED MOD JACK(8-CCT)				
	CHECKED BY EOMAHONY	DATE 2006/09/06	MOLEX INCORPORATED				
	APPROVED BY EOMAHONY	DATE 2006/09/06	MATERIAL NO. 85543-5001	DOCUMENT NO. SD-85543-501	SHEET NO. 1 OF 1		

DRAFT WHERE APPLICABLE MUST REMAIN WITHIN DIMENSIONS

THIS DRAWING CONTAINS INFORMATION THAT IS PROPRIETARY TO MOLEX INCORPORATED AND SHOULD NOT BE USED WITHOUT WRITTEN PERMISSION

9 8 7 6 5 4 3 2 1