

## FEATURES

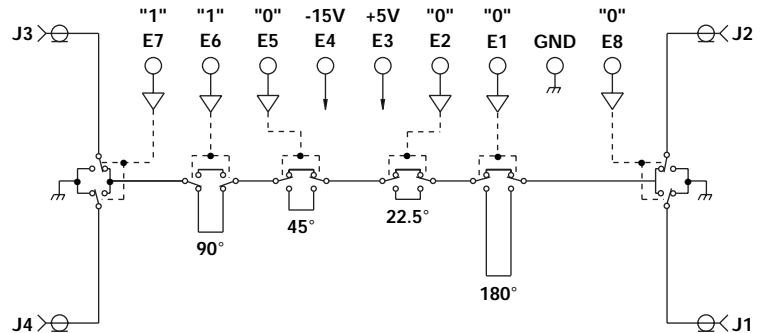
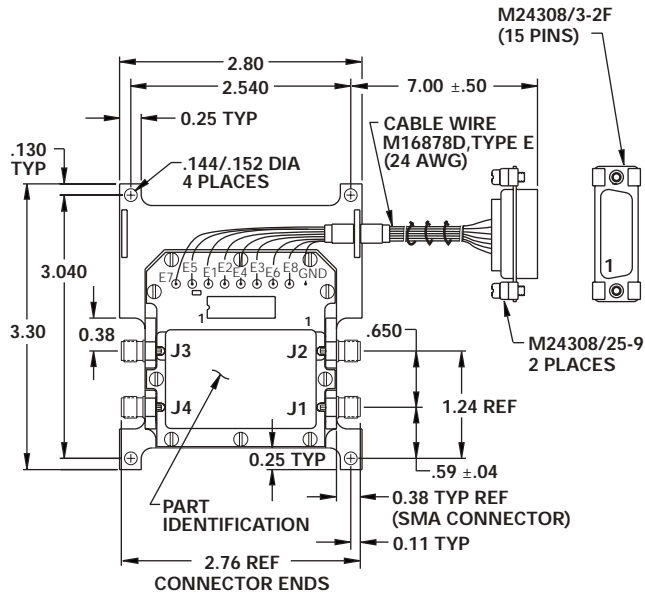
- 1215 - 1400 MHz
- 22.5° LSB
- 337.5° Range
- +42 dBm 3rd Order Intercept
- TTL Driver
- SMA Connector



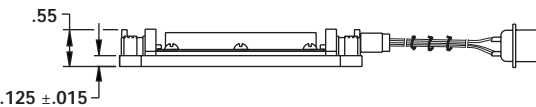
MODEL NO.  
CPS49093

## PHASE SHIFTER 4 SECTION

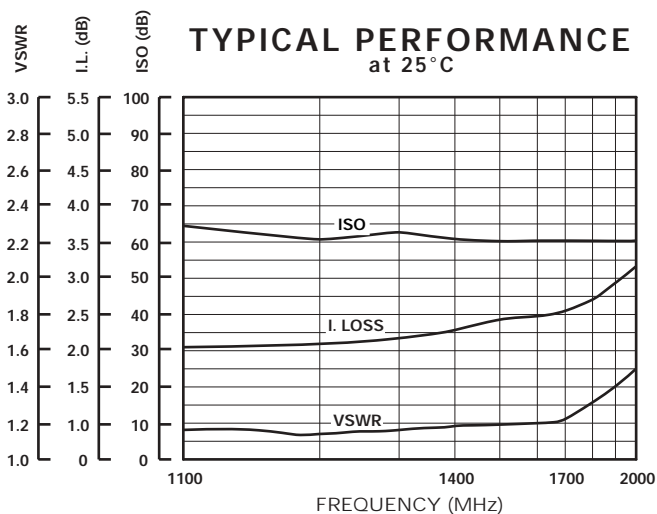
4 BIT



P1 PIN NO.	BD PIN NO.	FUNCTION
1	GND	GROUND
2	E3	+5V
3	E4	-15V
4	E1	180°
5	E6	90°
6	E5	45°
7	E2	22.5°
8	-	N/C
9	-	N/C
10	E8	J1/J2
11	E7	J3/J4
12	-	N/C
13	-	GND
14	-	GND
15	-	N/C



.xx = .02  
.xxx = .010



## GUARANTEED PERFORMANCE

Parameter	Min	Typ	Max	Units	Conditions
Operating Frequency	1215		1400	MHz	
DC Current		34 108	250 200	mA	At +5 VDC Supply At -15 VDC Supply
Control Type		TTL			6 Line Logic "0" = Refer Phase Logic "1" = Phase Shift
Control Current	High Low	.1 .1	±20 ±20	µA	V <sub>IH</sub> = +5.0V V <sub>IL</sub> = +0.8 V
Insertion Loss	1.75 1.25	2.4	2.75 3.25	dB	At 25° C At Temperature Extremes
Phase:	LSB Range Accuracy Linearity	22.5 337.5	±6	DEG	22.5, 45, 90, 180 At 1215 MHz
Isolation	40	60		dB	30 dBm Min With +5V Removed
VSWR		1.15/1	1.5/1		1215 - 1400 MHz
Impedance		50		OHMS	
Time Delay	.8	1.0	1.2	nSec	
Switching Speed		.6	3.5	µSec	50% TTL to 90% / 10% RF
Transition (Rise/Fall) Time		.05		µSec	10% / 90% or 90% / 10% RF
Switching (Video) Transients		36		mV	Peak Value
Intercept Points	2nd 3rd	+63 +42		dBm	2000 / 785 MHz 1000 / 785 MHz
RF Power	Operate No Damage	+36	+34 +37	dBm	0.2 dB Compression
Operating Temperature	-54	+25	+80	°C	TA