

TMX W308

SAW FRONT-END FILTER – WIRELESS RECEIVERS – RF

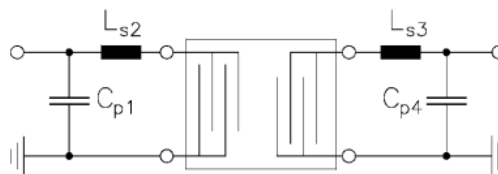
Tentative Specification (Rev. 1)

Electrical Parameters	Unit	Minimum	Typical ⁽¹⁾	Maximum
Source Impedance (single ended)	Ω	-	50 ⁽²⁾	-
Load Impedance (single ended)	Ω	-	50 ⁽²⁾	-
Center Frequency fo	MHz	-	868.3	-
Rejection				
At fo – 21.4 MHz (Image)	dB	30	40	-
At fo – 10.7 MHz (LO)	dB	15	30	-
Ultimate	dB	-	60	-
Insertion Loss	dB	-	4.5	6.0
Bandwidth at 3dB	dB	-	1.2	1.5
Temperature				
Turnover Temperature	$^{\circ}\text{C}$	15	25	40
Turnover Frequency	MHz	-	fo	-
Frequency Temperature Coefficient	ppm/ $^{\circ}\text{C}^2$	-	0.032	-
Frequency Aging Absolute Value during the First Year	ppm/yr	-	10	-
Package type & size				
Length x Width	mm ²	-	3.8 x 3.8	-
Height	mm	-	1.2	1.35
Pin Out				
Input	2	Output	6	
Input Ground	1	Output Ground	5	
Case Ground	4, 8	To Be Grounded	3, 7	

Notes :

- (1) Typical values are nominal performances at room temperature
- (2) External matching circuit is required (see drawing hereunder)

50 Ω / 50 Ω Configuration



These components values (L & C) have to be adjusted to the customer PC Board, due to parasitics inductors and capacitors.

TMX W308

SAW FRONT-END FILTER – WIRELESS RECEIVERS – RF

Tentative Specification (Rev. 1)

Maximum Ratings

Rating		Unit	Value
Operating Temperature Range	T _A	-40 to +85	°C
DC Voltage	V _{DC}	± 30	V
Input Power		15	dBm

Package Drawing

