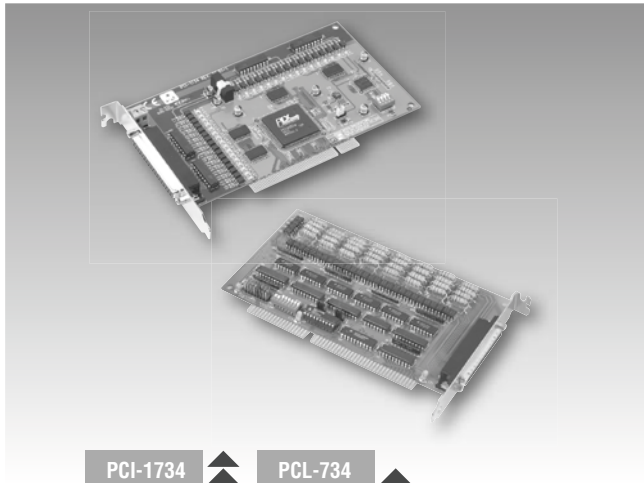


# PCI-1734

# PCL-734

## 32-ch Isolated Digital Output Card with PCI Interface

## 32-ch Isolated Digital Output Card with ISA Interface



PCI-1734

PCL-734

### Features

- 32 isolated digital output channels
- High output driving capacity
- High-voltage isolation on output channels
- High sink current on isolated output channels (200 mA/channel)
- Integral suppression diodes for inductive loads
- Wide output range (5 ~ 40 V<sub>DC</sub>)
- D-type connectors for isolated output channels

### Specifications

#### Isolated Digital Output

- **Channels** 32 (16-ch/group)
- **Output Type** Sink (NPN)
- **Isolation Protection** PCI-1734: 2,500 V<sub>DC</sub>  
PCL-734: 1,000 V<sub>DC</sub>
- **Output Voltage** 5 ~ 40 V<sub>DC</sub>
- **Sink Current** 200 mA max./channel
- **Opto-Isolator Response** PCL-734: 100 μs  
PCI-1734: 25 μs

#### General

- **Bus Type** PCI-1734: PCI V2.2  
PCL-734: ISA
- **I/O Connector Type** 37-pin D-type female
- **Dimensions (L x H)** PCL-734: 185 x 100 mm (7.3" x 3.9")  
PCI-1734: 175 x 100 mm (6.9" x 3.9")
- **Power Consumption**  
PCL-734: Typical: 5 V @ 330 mA  
Max: 5 V @ 500 mA  
PCI-1734: Typical: 5 V @ 150 mA, 12 V @ 15 mA  
Max: 5 V @ 250 mA, 12 V @ 25 mA
- **Operating Temperature** 0 ~ 60° C (32 ~ 140° F)
- **Storing Temperature** PCL-734: -20~70° C (-4~158° F)  
PCI-1734: -25 ~ 85° C (-13 ~ 185° F)
- **Storing Humidity** 5 ~ 95% (IEC 68-2-3)  
non-condensing

### Ordering Information

- **PCI-1734** 32-channel isolated digital PCI output card, user manual and driver CD-ROM (cable not included)
- **PCL-734** 32-channel isolated digital ISA output card, user manual and driver CD-ROM (cable not included)
- **PCL-10137-2** DB37 cable assembly, 2 m
- **PCL-10137-3** DB37 cable assembly, 3 m
- **PCLD-780** Universal screw terminal board
- **PCLD-880** Universal screw terminal board
- **ADAM-3937** DB37 wiring terminal for DIN-rail mounting

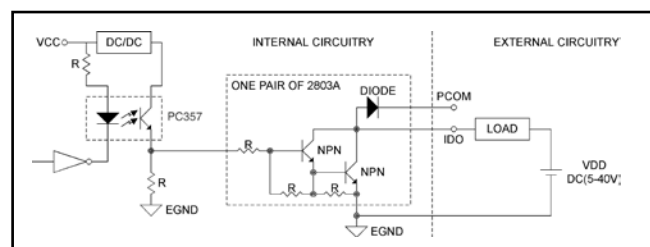
### Applications

- Industrial On/Off control
- Contact closure monitoring
- Switch status sensing
- BCD interfacing
- Digital input control
- Industrial and lab automation

### Pin Assignments

#### CN1 of PCI-1734

ID00	1	20	ID01
ID02	2	21	ID03
ID04	3	22	ID05
ID06	4	23	ID07
PCOM1	5	24	ID08
ID09	6	25	ID010
ID011	7	26	ID012
ID013	8	27	ID014
ID015	9	28	PCOM2
ID016	10	29	ID017
ID018	11	30	ID019
ID020	12	31	ID021
ID022	13	32	ID023
PCOM3	14	33	ID024
ID025	15	34	ID026
ID027	16	35	ID028
ID029	17	36	ID030
ID031	18	37	ID030
E.GND	19		PCOM4



Isolated Output Circuit Diagram

www.DataSheet4U.com

www.DataSheet4U.com