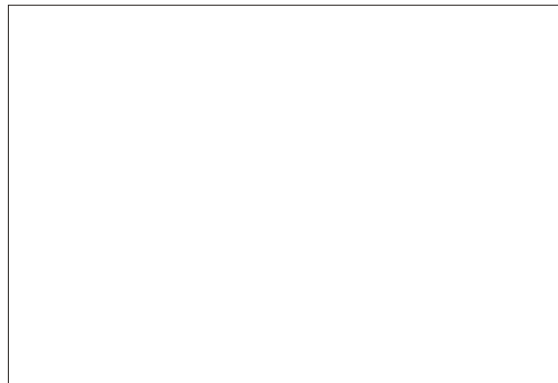


SMPS7-25-12

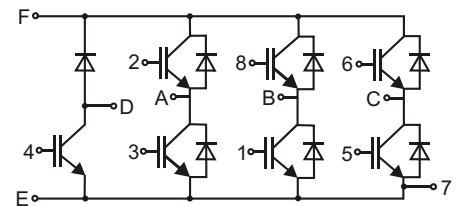
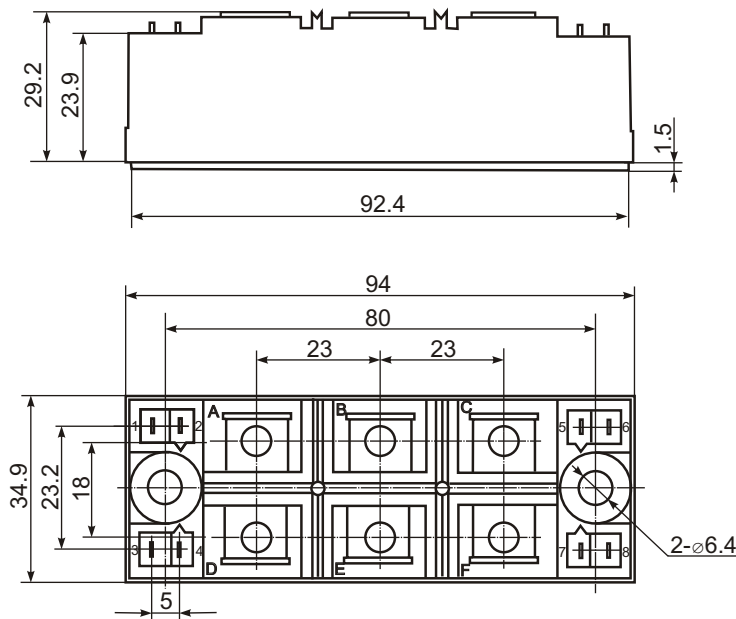


7-pack IGBT Module



www.DataSheet4U.com

| Type | V_{CES} | I_C | I_{CM} | $V_{CE(sat)}$ | $t_{d(on)}$ | $t_{d(off)}$ | t_f | T_{Jmax} | V_{isol} | R_{thJC} |
|-------------|-----------|-------|----------|---------------|-------------|--------------|-------|------------|------------|------------|
| | V | A | A | V | ns | ns | ns | °C | V | K/W |
| SMPS7-25-12 | 1200 | 25 | 45 | 1.7 | 50 | 350 | 60 | 150 | 2500 | 0.8 |



Features:

- Industrial standard package
- Heat transfer through aluminium nitride ceramic isolated metal baseplate
- Precise internal pressure contacts for high reliability
- 2500V RMS isolation voltage

Typical Applications:

- DC motor control
- AC motor soft starter
- Temperature control (e.g. for ovens, chemical processes)
- Lighting control