

PLEASE CHECK WWW.MOLEX.COM FOR LATEST PART INFORMATION

Part Number: [0906351101](#)
Status: **Active**
Overview: [qf50](#)
Description: 1.27mm (.050") Pitch QF-50™, Single Beam, Vertical MIL/DIN Version, 0.10µm (4µ") Gold (Au), 10 Circuits

Documents:

[3D Model](#) [Product Specification PS-99020-0015 \(PDF\)](#)
[Drawing \(PDF\)](#) [RoHS Certificate of Compliance \(PDF\)](#)

Agency Certification

CSA LR19980
 UL E29179

General

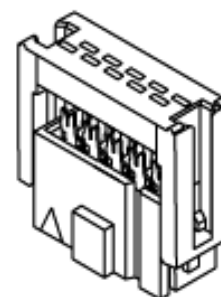
Product Family Ribbon Cable / Wire Trap Connectors
 Series [90635](#)
 Comments Preloaded Upper Housing
 Component Type Housing
 Glow-Wire Compliant No
 Overview [qf50](#)
 Product Name QF-50™

Physical

Circuits (Loaded) 10
 Color - Resin Black
 Durability (mating cycles max) 300
 Entry Angle 90° Angle
 Flammability 94V-0
 Lock to Mating Part None
 Material - Metal Phosphor Bronze
 Material - Plating Mating Gold
 Material - Plating Termination Tin
 Material - Resin Polyester
 Number of Rows 2
 PCB Retention None
 Packaging Type Tray
 Pitch - Mating Interface (in) 0.050 In
 Pitch - Mating Interface (mm) 1.27 mm
 Plating min: Mating (µin) 4
 Plating min: Mating (µm) 0.1
 Plating min: Termination (µin) 39
 Plating min: Termination (µm) 1
 Polarized to Mating Part Yes
 Shrouded Fully
 Stackable No
 Surface Mount Compatible (SMC) N/A
 Temperature Range - Operating -25°C to +85°C
 Termination Interface: Style IDT or Pierce
 Wire Insulation Diameter 1.14mm (.045") max.
 Wire Size AWG 26, 28
 Wire/Cable Type Ribbon Cable

Electrical

Current - Maximum per Contact 1A
 Voltage - Maximum 250V AC/DC



Series

image - Reference only

EU RoHS

ELV and RoHS Compliant
REACH SVHC Contains SVHC: No
Halogen-Free Status

China RoHS



Not Halogen-Free
Need more information on product environmental compliance?

Email productcompliance@molex.com
 For a multiple part number RoHS Certificate of Compliance, [click here](#)

Please visit the [Contact Us](#) section for any non-product compliance questions.

Search Parts in this Series

[90635Series](#)

Mates With

[90663](#)

Use With

[90170](#)

Application Tooling | FAQ

Tooling specifications and manuals are found by selecting the products below. Crimp Height Specifications are then contained in the Application Tooling Specification document.

Global

Description	Product #
Semi-Automatic Bench Press PB15 C/W Cable Sensor for 90635 Connectors	0691271150
Changehead for Parallel	0690080250

Material Info

Reference - Drawing Numbers

Product Specification
Sales Drawing

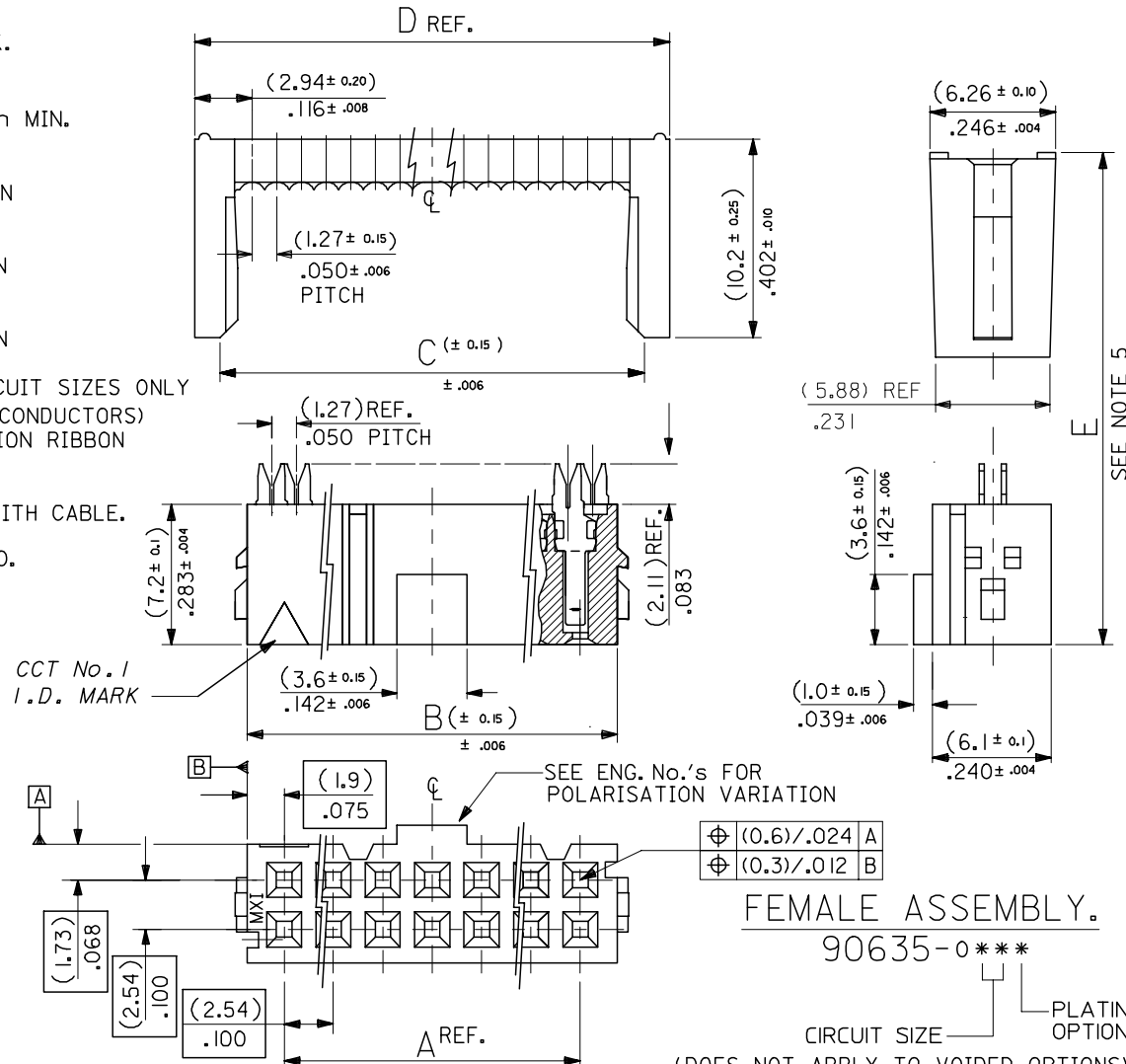
PS-99020-0015
SDA-90635

Action Handtool
69008-0949, for
QF-50™ and
MX-50™ Connectors
Arbor Press Fixture 0690200680

This document was generated on 05/31/2010

PLEASE CHECK WWW.MOLEX.COM FOR LATEST PART INFORMATION

- NOTES: 1. MATERIAL:
 HOUSING: POLYESTER, G.F. (UL 94V-0), COLOUR - BLACK.
 TERMINAL: PHOSPHOR BRONZE.
2. TERMINAL PLATING:
 90635-***1 : CONTACT AREA: GOLD FLASH (0.1um)/ 4uIn MIN.
 I.D. AREA: TIN (1um)/ 39uIn MIN. OVER
 NICKEL (1um)/ 39uIn MIN.
 90635-***2 : CONTACT AREA: GOLD (0.76um)/ 30uIn MIN
 I.D. AREA: TIN (1um)/ 39uIn MIN. OVER
 NICKEL (1um)/ 39uIn MIN.
 90635-***3 : CONTACT AREA: GOLD (0.38um)/ 15uIn MIN
 I.D. AREA: TIN (1um)/ 39uIn MIN. OVER
 NICKEL (1um)/ 39uIn MIN.
 90635-***4 : CONTACT AREA: GOLD (0.51um)/ 20uIn MIN
 I.D. AREA: TIN (1um)/ 39uIn MIN. OVER
 NICKEL (1um)/ 39uIn MIN.. 20 & 50 CIRCUIT SIZES ONLY
3. FOR USE WITH No. 26 & 28 AWG STRANDED WIRE (7 CONDUCTORS)
 AND No. 28 SOLID WIRE 1.14/(.045) DIA. MAX. INSULATION RIBBON
 CABLE WITH 1.27/(.050) CENTERS.
4. MATING STRAIN RELIEF: MOLEX No. 90170.
5. DIMENSION "E" IS TOTAL HEIGHT AFTER ASSEMBLED WITH CABLE.
 E = 10.5/(.413) REF. WITHOUT STRAIN RELIEF.
 E = (15.2)/.598 MAX. WITH STRAIN RELIEF No. 90170.
 (14.5)/.571 REF. WHEN COMPRESSED .
6. FOR PRODUCT SPECIFICATION, SEE PS 99020-0015.



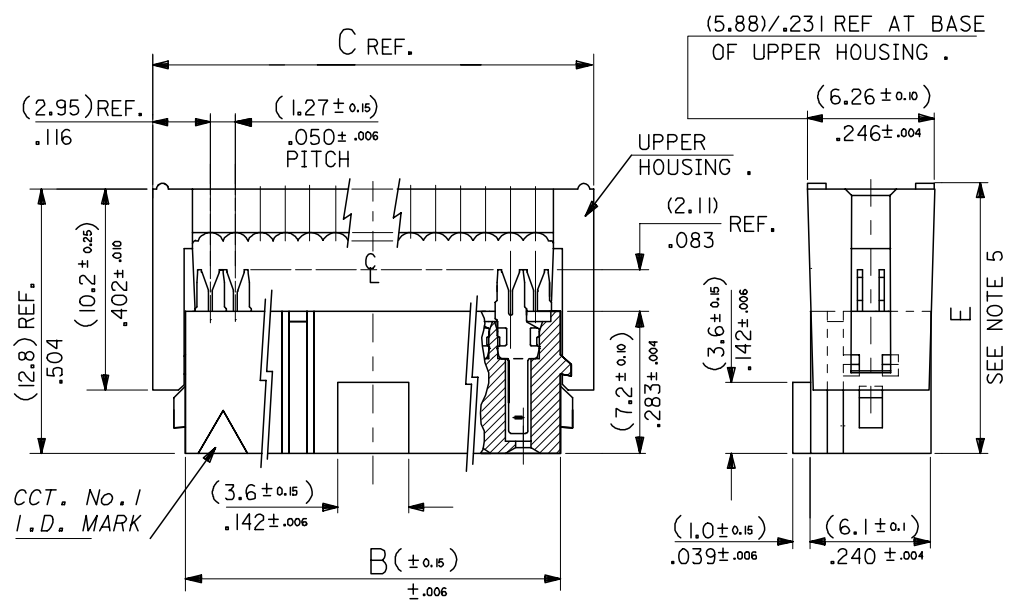
64	90635-64*	(78.74) 3.100	(82.54) 3.250	(83.31) 3.280	(85.88) 3.381
60	90635-60*	(73.66) 2.900	(77.46) 3.050	(78.23) 3.080	(80.80) 3.181
50	90635-50*	(60.96) 2.400	(64.76) 2.55	(65.53) 2.580	(68.10) 2.681
40	90635-40*	(48.26) 1.900	(52.06) 2.050	(52.83) 2.080	(55.40) 2.181
34	90635-34*	(40.64) 1.600	(44.44) 1.750	(45.21) 1.780	(47.78) 1.881
30	90635-30*	(35.56) 1.400	(39.36) 1.550	(40.13) 1.580	(42.70) 1.681
26	90635-26*	(30.48) 1.200	(34.28) 1.350	(35.05) 1.380	(37.62) 1.481
24	90635-24*	(27.94) 1.100	(31.74) 1.250	(32.51) 1.280	(35.08) 1.381
20	90635-20*	(22.86) .900	(26.66) 1.050	(27.43) 1.080	(30.00) 1.181
16	90635-16*	(17.78) .700	(21.58) .850	(22.35) .880	(24.92) .981
14	90635-14*	(15.24) .600	(19.04) .750	(19.81) .780	(22.38) .881
10	90635-10*	(10.16) .400	(13.96) .550	(14.73) .580	(17.30) .681
NO. OF CKT.	ENG. NO.	A	B	C	D REF.

FEMALE ASSEMBLY.
 90635-0***

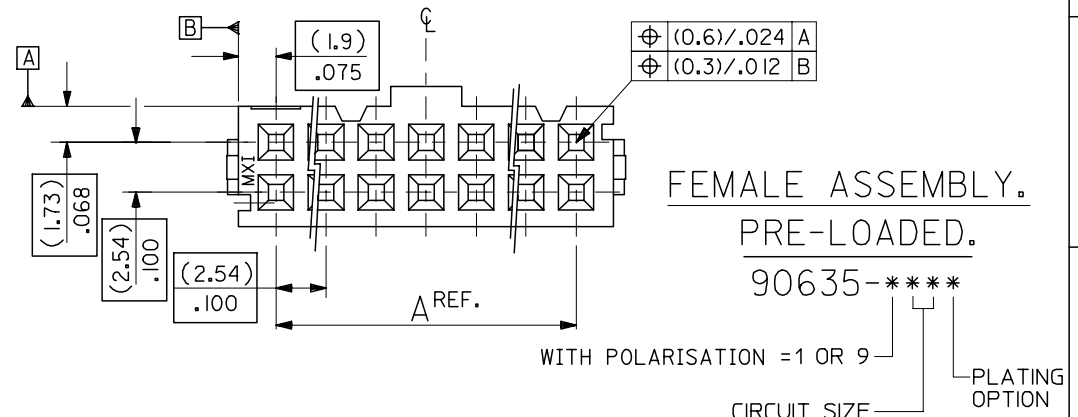
CIRCUIT SIZE PLATING OPTION
 (DOES NOT APPLY TO VOIDED OPTIONS)

REMOVED POLARISATION EC NO: E2007-0495 DRWN:DBYRNES 2006/12/06 CHKD: 2006/12/07 APPR:EDMAMONY 2006/12/07	QUALITY SYMBOLS	GENERAL TOLERANCES (UNLESS SPECIFIED)	DIMENSION STYLE	SCALE	DESIGN UNITS	THIRD ANGLE PROJECTION	
	▽=0 ∇=0	mm INCH	MM/IN	4:1	METRIC		
		4 PLACES ± --- ± --- 3 PLACES ± --- ± --- 2 PLACES ± --- ± --- 1 PLACE ± --- ± --- ANGULAR ± ---°	DRAWN BY DATE POB 1990/09/25 CHECKED BY DATE JDENNEHY 2005/08/10 APPROVED BY DATE JDENNEHY 2005/08/10	TITLE	QIK FLECS SINGLE BEAM FEMALE ASSEMBLY		
	DRAFT WHERE APPLICABLE MUST REMAIN WITHIN DIMENSIONS	MATERIAL NO.	DOCUMENT NO.	MOLEX INCORPORATED			
	SIZE A3	SEE CHART		SDA-90635			
	THIS DRAWING CONTAINS INFORMATION THAT IS PROPRIETARY TO MOLEX INCORPORATED AND SHOULD NOT BE USED WITHOUT WRITTEN PERMISSION						

- NOTES: 1. MATERIAL:
HOUSING: POLYESTER, G.F. (UL 94V-0), COLOUR - BLACK.
TERMINAL: PHOSPHOR BRONZE.
2. TERMINAL PLATING:
90635-***1 : CONTACT AREA: GOLD FLASH (0.1um)/ 4uin MIN.
I.D. AREA: TIN (1um)/ 39uin MIN. OVER
NICKEL (1um)/ 39uin MIN.
90635-***2 : CONTACT AREA: GOLD (0.76um)/ 30uin MIN
I.D. AREA: TIN (1um)/ 39uin MIN. OVER
NICKEL (1um)/ 39uin MIN.
90635-***3 : CONTACT AREA: GOLD (0.38um)/ 15uin MIN
I.D. AREA: TIN (1um)/ 39uin MIN. OVER
NICKEL (1um)/ 39uin MIN.
90635-***4 : CONTACT AREA: GOLD (0.51um)/ 20uin MIN
I.D. AREA: TIN (1um)/ 39uin MIN. OVER
NICKEL (1um)/ 39uin MIN.
3. FOR USE WITH No. 26 & 28 AWG STRANDED WIRE (7 CONDUCTORS)
AND No. 28 SOLID WIRE 1.14/(.045) DIA. MAX. INSULATION RIBBON
CABLE WITH 1.27/(.050) CENTERS.
4. MATING STRAIN RELIEF: MOLEX No. 90170.
5. DIMENSION "E" IS TOTAL HEIGHT AFTER ASSEMBLED WITH CABLE.
E = 10.5/(.413) REF. WITHOUT STRAIN RELIEF.
E = (15.2)/.598 MAX. WITH STRAIN RELIEF No. 90170.
(14.5)/.571 REF. WHEN COMPRESSED .
6. FOR PRODUCT SPECIFICATION, SEE PS 99020-0015.



64	90635-*64*	(78.74) 3.100	(82.54) 3.250	(85.88) 3.381
60	90635-*60*	(73.66) 2.900	(77.46) 3.050	(80.80) 3.181
50	90635-*50*	(60.96) 2.400	(64.76) 2.55	(68.10) 2.681
40	90635-*40*	(48.26) 1.900	(52.06) 2.050	(55.40) 2.181
	90635-9402 (CUSTOMER SPECIFIC)			
34	90635-*34*	(40.64) 1.600	(44.44) 1.750	(47.78) 1.881
30	90635-*30*	(35.56) 1.400	(39.36) 1.550	(42.70) 1.681
26	90635-*26*	(30.48) 1.200	(34.28) 1.350	(37.62) 1.481
24	90635-*24*	(27.94) 1.100	(31.74) 1.250	(35.08) 1.381
20	90635-*20*	(22.86) .900	(26.66) 1.050	(30.00) 1.181
16	90635-*16*	(17.78) .700	(21.58) .850	(24.92) .981
14	90635-*14*	(15.24) .600	(19.04) .750	(22.38) .881
10	90635-*10*	(10.16) .400	(13.96) .550	(17.30) .681
No. OF CKT.	ENG. NO.	A	B	C



REMOVED OPTION EC NO: E2007-0495 2006/12/06 DRWN:DBYRNES 2006/12/07 CHKD: 2006/12/07 APPR:EOHANY 2006/12/07	QUALITY SYMBOLS	GENERAL TOLERANCES (UNLESS SPECIFIED)	DIMENSION STYLE	SCALE	DESIGN UNITS	THIRD ANGLE PROJECTION	
	▽=0 ∇=0	mm INCH	MM/IN	4:1	METRIC		
		4 PLACES ± --- ± ---	DRAWN BY	DATE	TITLE		
		3 PLACES ± --- ± ---	POB	1990/09/25	QIK FLECS SINGLE BEAM FEMALE ASSEMBLY, PRE-LOADED		
	2 PLACES ± --- ± ---	APPROVED BY	DATE	MOLEX MOLEX INCORPORATED			
	1 PLACE ± --- ± ---	JDENNEHY	2005/08/10	MATERIAL NO. DOCUMENT NO. SHEET NO.			
	ANGULAR ± ---°	JDENNEHY	2005/08/10	SDA-90635 2 OF 3			
		DRAFT WHERE APPLICABLE MUST REMAIN WITHIN DIMENSIONS		SEE CHART			
		THIS DRAWING CONTAINS INFORMATION THAT IS PROPRIETARY TO MOLEX INCORPORATED AND SHOULD NOT BE USED WITHOUT WRITTEN PERMISSION					