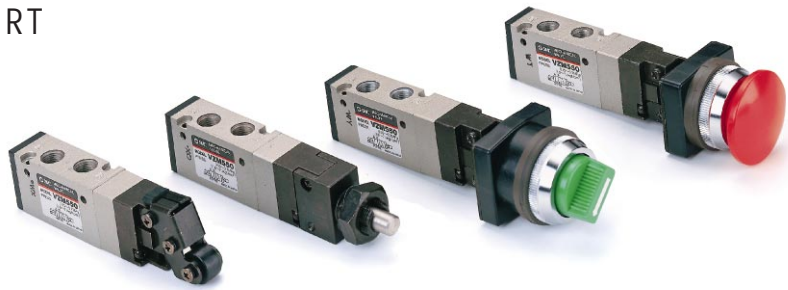


5/2 MECHANICAL VALVE 1/8 PORT SERIES VZM550

- ✓ Many different actuators
- ✓ High flow Cv 0.6
- ✓ High cycle rate
- ✓ Long life
- ✓ Interfaces with VZ5000 2-10 station Type 21 manifold



How To ORDER VZM550 VALVE

VZM550 — 01 —

ACTUATOR

- 00 ...Basic type
- 01 ...Roller lever
- 01S ...Roller lever hard steel roller
- 02 ...One way trip
- 02S ...One way trip hard steel roller
- 05 ...Straight plunger
- 06 ...Roller plunger
- 06S ...Roller plunger hard steel roller
- 08 ...Toggle
- 30 ...Push Button-Mushroom
- 32 ...Push button-Extended
- 33 ...Push button-Flush
- 34 ...Twist selector
- 37 ...Push-pull

PUSH BUTTON COLOUR

- RRed
- GGreen
- BBlack

STOCKED PRODUCTS
FOR A LIST OF STOCKED PRODUCTS,
PLEASE SEE THE CURRENT SMC PRICE LIST

How To ORDER VZM550 ACTUATOR ONLY

PART NO. APPLICATION

MECHANICAL OPERATION

- Basic.....
- Roller leverVM-01CPolyacetal roller
- Roller leverVM-01CSHard steel roller
- One way trip.....VM-02CPolyacetal roller
- One way trip.....VM-02CSHard steel roller
- Straight plungerVM-05C
- Roller plungerVM-06CPolyacetal roller
- Roller plungerVM-06CSHard steel roller

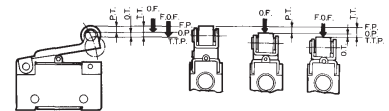
MANUAL OPERATION

- ToggleVM-08C
- Push Button-Mushroom ...VM-30CR ...Red
- Push Button-Mushroom ...VM-30CB ...Black
- Push Button-Mushroom ...VM-30CG ...Green
- Push button-ExtendedVM-32CR ...Red
- Push button-ExtendedVM-32CB ...Black
- Push button-ExtendedVM-30CG ...Green
- Push button-FlushVM-33C
- Twist selectorVM-34CR ...Red
- Twist selectorVM-34CB ...Black
- Twist selectorVM-34CG ...Green
- Key selectorVM-36C
- Push-pull.....Black

TECHNICAL SPECIFICATIONS

Fluid	Air, Inert gas
Operating pressure	1.5 - 7 Bar
Ambient and fluid temperature	5 - 60°C
Effective orifice (Cv factor)	10.8mm ² (0.6)
Maximum frequency	300c.p.m.
Lubrication	Not required
Port size	Main valve 1/8 Pilot Valve (EXH) M5x0.8

KEY TO DIMENSIONAL TABLES



- F.O.F. (Full Operating Force) ...Required force to total travel position
- P.T. (Pre Travel)From free position to initial valve opening position
- O.T. (Over Travel).....From initial valve opening position to total travel position
- T.T. (Total Travel)From free position to total travel position

ACCESSORIES

- MANIFOLD TYPE 21 TOP PORTED
DXT199-22-1ABlanking plate kit

STOCKED PRODUCTS
FOR A LIST OF STOCKED PRODUCTS,
PLEASE SEE THE CURRENT SMC PRICE LIST



Valves with certain operators cannot be mounted side by side. Check valve dimensions



If these valves are used for guarding or safety interlock systems, installation and application should be as per BS5304: 1988. Careful note should be taken of the operating principles and design of different ranges of mechanical valves when specifying valves for safety related systems.



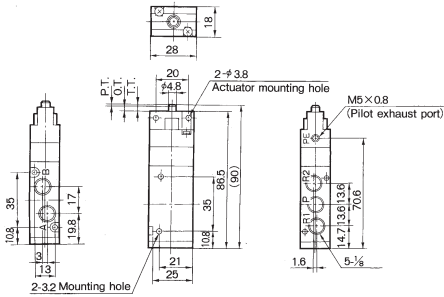
SEE INSIDE FRONT COVER FOR
DETAILS OF YOUR LOCAL SALES OFFICE



DIMENSIONS
SEE NEXT PAGE

FOR FURTHER TECHNICAL
DETAILS ON THIS
PRODUCT REQUEST
CATALOGUE REFERENCE
E104

DIMENSIONS
VZM550 BASIC VALVE



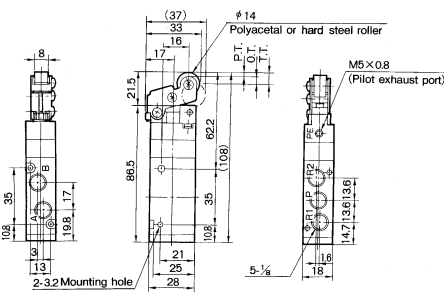
F.O.F*	16N
P.T.	1mm
O.T.	2mm
T.T.	3mm

*5 Bar supply

SYMBOLS
VZM550 BASIC VALVE



DIMENSIONS
VZM550 ROLLER LEVER



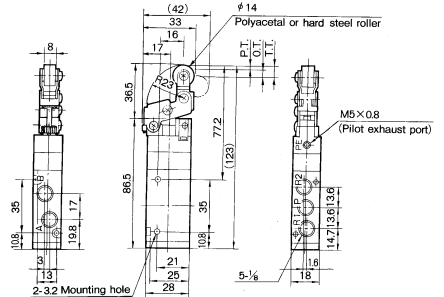
F.O.F*	8N
P.T.	2.2mm
O.T.	4mm
T.T.	6.2mm

*5 Bar supply

SYMBOLS
VZM550 ROLLER LEVER



DIMENSIONS
VZM550 ONE WAY TRIP



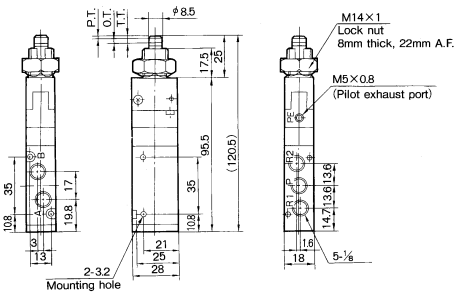
F.O.F*	7N
P.T.	2.4mm
O.T.	4.6mm
T.T.	7mm

*5 Bar supply

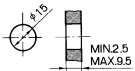
SYMBOLS
VZM550 ONE WAY TRIP



DIMENSIONS
VZM550 STRAIGHT PLUNGER



Panel mount hole



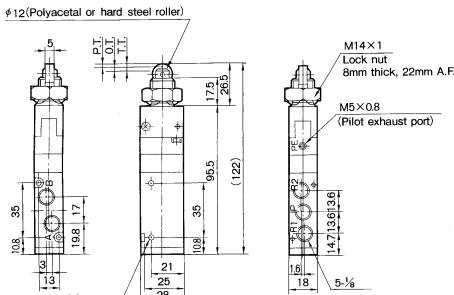
F.O.F*	18N
P.T.	1.5mm
O.T.	2mm
T.T.	3.5mm

*5 Bar supply

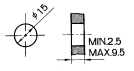
SYMBOLS
VZM550 STRAIGHT PLUNGER



DIMENSIONS
VZM550 ROLLER PLUNGER



Panel mount hole



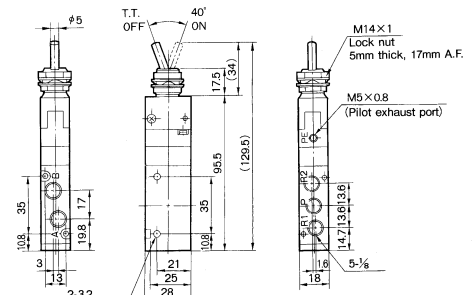
F.O.F*	18N
P.T.	1.5mm
O.T.	2mm
T.T.	3.5mm

*5 Bar supply

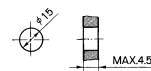
SYMBOLS
VZM550 ROLLER PLUNGER



DIMENSIONS
VZM550 TOGGLE LEVER



Panel mount hole



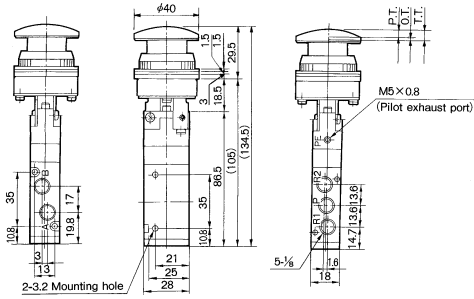
F.O.F*	15N
T.T.	40°

*5 Bar supply

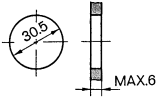
SYMBOLS
VZM550 TOGGLE LEVER



DIMENSIONS
VZM550 PUSH BUTTON-MUSHROOM



Panel mount hole



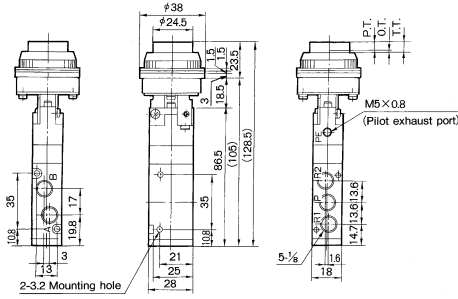
F.O.F*	21N
P.T.	5.3mm
O.T.	1.7mm
T.T.	7mm

*5 Bar supply

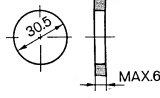
SYMBOLS
VZM550 PUSH BUTTON-MUSHROOM



DIMENSIONS
VZM550 PUSH BUTTON-EXTENDED



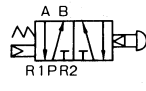
Panel mount hole



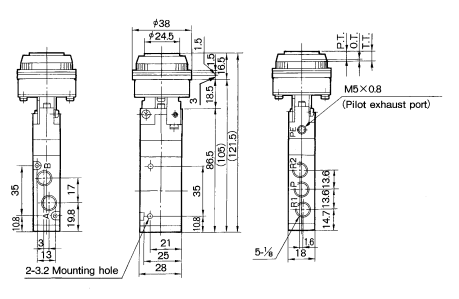
F.O.F*	21N
P.T.	5.3mm
O.T.	1.7mm
T.T.	7mm

*5 Bar supply

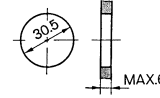
SYMBOLS
VZM550 PUSH BUTTON-EXTENDED



DIMENSIONS
VZM550 PUSH BUTTON-FLUSH



Panel mount hole



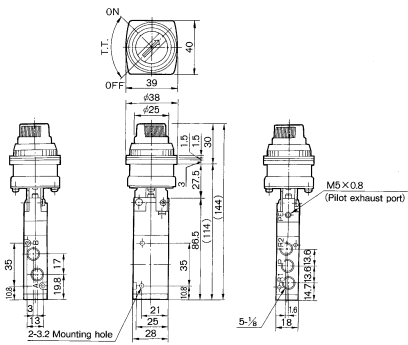
F.O.F*	21N
P.T.	5.3mm
O.T.	1.7mm
T.T.	7mm

*5 Bar supply

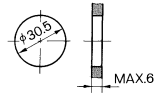
SYMBOLS
VZM550 PUSH BUTTON-FLUSH



DIMENSIONS
VZM550 TWIST SELECTOR - 2 POSITION



Panel mount hole



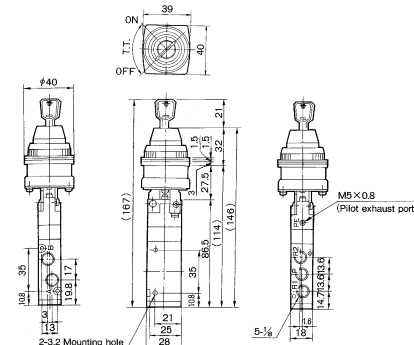
F.O.F*	23N
T.T.	90°

*5 Bar supply

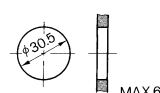
SYMBOLS
VZM550 TWIST SELECTOR - 2 POSITION



DIMENSIONS
VZM550 KEY SELECTOR - 2 POSITION



Panel mount hole



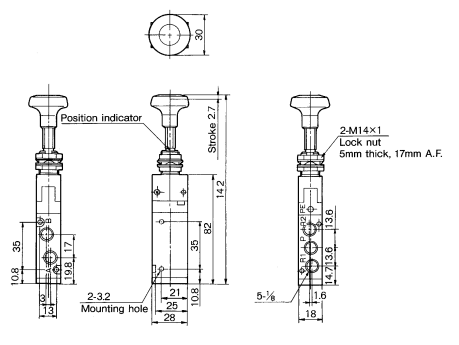
F.O.F*	23N
T.T.	90°

*5 Bar supply

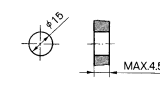
SYMBOLS
VZM550 KEY SELECTOR - 2 POSITION



DIMENSIONS
VZM550 PUSH-PULL



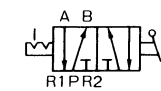
Panel mount hole



F.O.F*	23N
T.T.	90°

*5 Bar supply

SYMBOLS
VZM550 PUSH-PULL



SEE INSIDE FRONT COVER FOR
DETAILS OF YOUR LOCAL SALES OFFICE



FOR FURTHER TECHNICAL
DETAILS ON THIS
PRODUCT REQUEST
CATALOGUE REFERENCE
E104