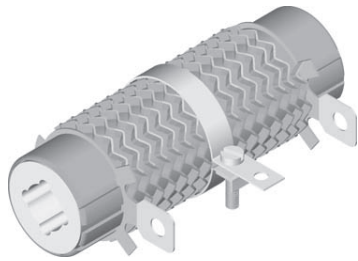


Cemented Resistors with Corrugated Ribbon



FEATURES

- All welded construction
- Power rating up to 500 watt
- Corrugated ribbon construction aids rapid cooling
- Available in adjustable design

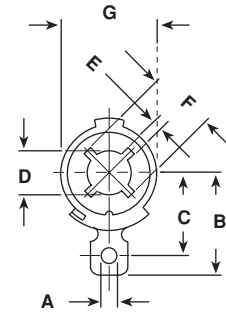
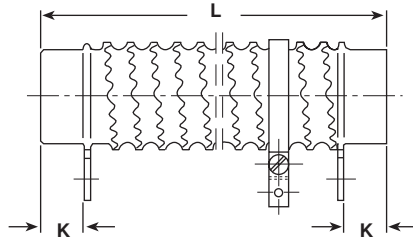
STANDARD ELECTRICAL SPECIFICATIONS

MODEL	POWER RATING $P_{40^{\circ}\text{C}}$ W	RESISTANCE RANGE $\pm 10\%$ / $\pm 5\%$			WEIGHT (Grams)
		TC+650...+750ppm/K WM10	TC-10...-80ppm/K WM50	TC+100...+180ppm/K WM110	
ZBS 20/100 ZBS 20/100 E	50	R13 - R51	R56 - 2R2	1R3 - 6R2	100
ZBS 20/165 ZBS 20/165 E	100	R27 - 1R0	1R1 - 4R7	2R4 - 12R	150
ZBS 20/265 ZBS 20/265 E	150	R47 - 1R8	2R0 - 7R5	4R3 - 22R	250
ZBS 30/100 ZBS 30/100 E	75	R10 - R43	R47 - 3R3	1R0 - 8R2	200
ZBS 30/133 ZBS 30/133 E	110	R15 - R62	R68 - 5R1	1R5 - 12R	250
ZBS 30/165 ZBS 30/165 E	150	R20 - R91	1R0 - 6R8	2R0 - 16R	300
ZBS 30/215 ZBS 30/215 E	200	R27 - 1R1	1R2 - 9R1	2R7 - 24R	400
ZBS 30/265 ZBS 30/265 E	250	R30 - 1R3	1R5 - 11R	3R9 - 27R	500
ZBS 30/330 ZBS 30/330 E	300	R39 - 1R8	2R0 - 15R	5R1 - 36R	600
ZBS 45/370 ZBS 45/370 E	375	R75 - 3R0	3R3 - 24R	8R2 - 56R	1000
ZBS 60/370 ZBS 60/370 E	500	R91 - 3R9	4R3 - 33R	10R - 75R	1200

ORDERING INFORMATION

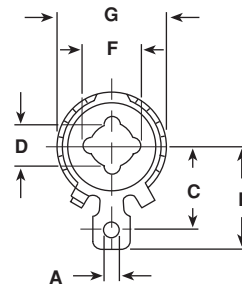
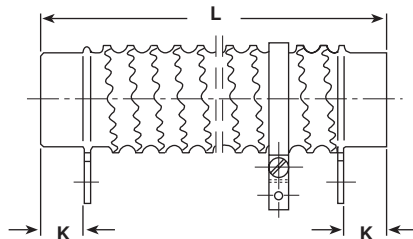
ZBS	30/100	100R	$\pm 5\%$	WM50
MODEL	SIZE	RESISTANCE VALUE Ω	TOLERANCE $\pm \%$	MATERIAL OF THE RESISTANCE ELEMENT

DIMENSIONS



ZBS 20/...

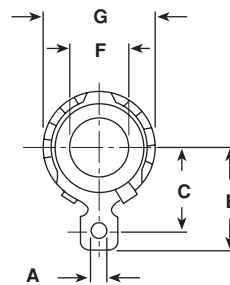
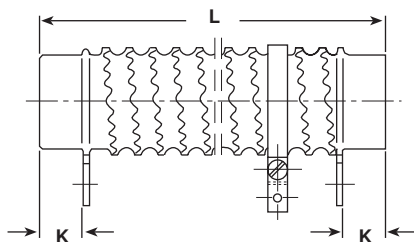
MODEL	DIMENSIONS in millimeters [inches]								
	L	K	A	B	C	D	E	F	G
ZBS 20/100 ZBS 20/100 E	100 ± 2.5 [3.937 ± 0.098]	15 [0.591]	4.2 [0.165]	26.5 [1.043]	22 [0.866]	10 [0.394]	1.5 [0.059]	14 [0.551]	24 [0.945]
ZBS 20/165 ZBS 20/165 E	165 ± 4 [6.496 ± 0.157]	15 [0.591]	4.2 [0.165]	26.5 [1.043]	22 [0.866]	10 [0.394]	1.5 [0.059]	14 [0.551]	24 [0.945]
ZBS 20/265 ZBS 20/265 E	265 ± 6.6 [10.433 ± 0.260]	15 [0.591]	4.2 [0.165]	26.5 [1.043]	22 [0.866]	10 [0.394]	1.5 [0.059]	14 [0.551]	24 [0.945]



ZBS 30/...

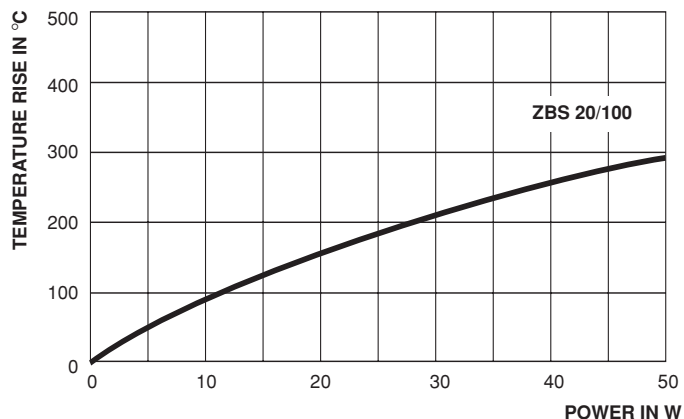
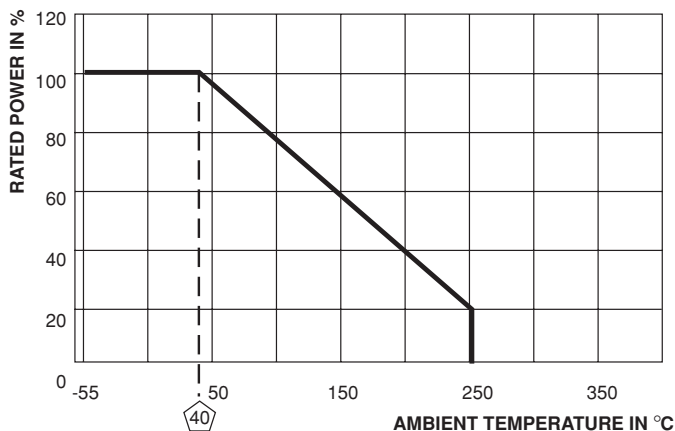
MODEL	DIMENSIONS in millimeters [inches]							
	L	K	A	B	C	D	F	G
ZBS 30/100 ZBS 30/100 E	100 ± 2.5 [3.937 ± 0.098]	15 [0.591]	5.2 [0.205]	34 [1.339]	28 [1.102]	14 [0.551]	18.5 [0.728]	37 ± 1 [1.457 ± 0.039]
ZBS 30/133 ZBS 30/133 E	133 ± 3.3 [5.236 ± 0.130]	15 [0.591]	5.2 [0.205]	34 [1.339]	28 [1.102]	14 [0.551]	18.5 [0.728]	37 ± 1 [1.457 ± 0.039]
ZBS 30/165 ZBS 30/165 E	165 ± 4 [6.496 ± 0.157]	15 [0.591]	5.2 [0.205]	34 [1.339]	28 [1.102]	14 [0.551]	18.5 [0.728]	37 ± 1 [1.457 ± 0.039]
ZBS 30/215 ZBS 30/215 E	215 ± 5.4 [8.465 ± 0.213]	15 [0.591]	5.2 [0.205]	34 [1.339]	28 [1.102]	14 [0.551]	18.5 [0.728]	37 ± 1 [1.457 ± 0.039]
ZBS 30/265 ZBS 30/265 E	265 ± 6.6 [10.433 ± 0.260]	15 [0.591]	5.2 [0.205]	34 [1.339]	28 [1.102]	14 [0.551]	18.5 [0.728]	37 ± 1 [1.457 ± 0.039]
ZBS 30/330 ZBS 30/330 E	330 ± 8 [12.992 ± 0.315]	15 [0.591]	5.2 [0.205]	34 [1.339]	28 [1.102]	14 [0.551]	18.5 [0.728]	37 ± 1 [1.457 ± 0.039]

DIMENSIONS (CONTINUED)



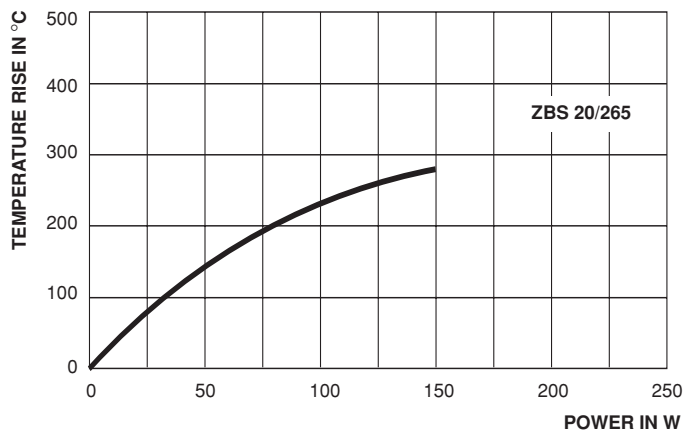
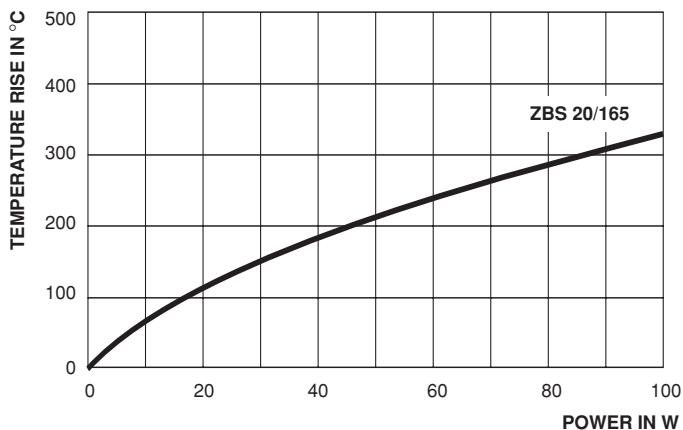
ZBS 45/370, ZBS 60/370

MODEL	DIMENSIONS in millimeters [inches]						
	L	K	A	B	C	F	G
ZBS 45/370 ZBS 45/370 E	370 ± 9 [14.567 ± 0.354]	15 [0.591]	5.2 [0.205]	42.5 [1.673]	37 [1.457]	30 [1.181]	52 ± 1 [2.047 ± 0.039]
ZBS 60/370 ZBS 60/370 E	370 ± 9 [14.567 ± 0.354]	15 [0.591]	5.2 [0.205]	51.5 [2.028]	45.5 [1.791]	45 [1.772]	67 ± 1 [2.638 ± 0.039]



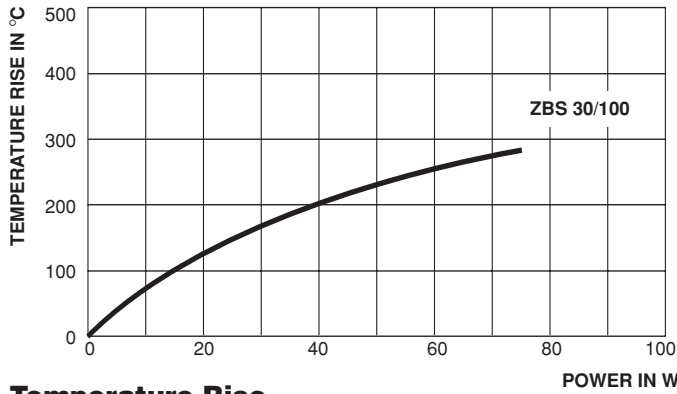
Derating

Temperature Rise

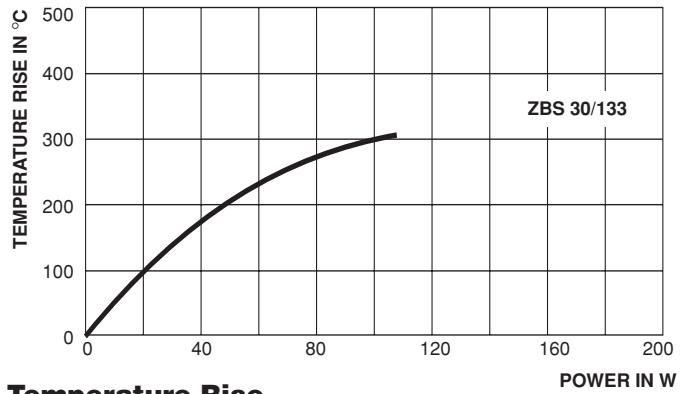


Temperature Rise

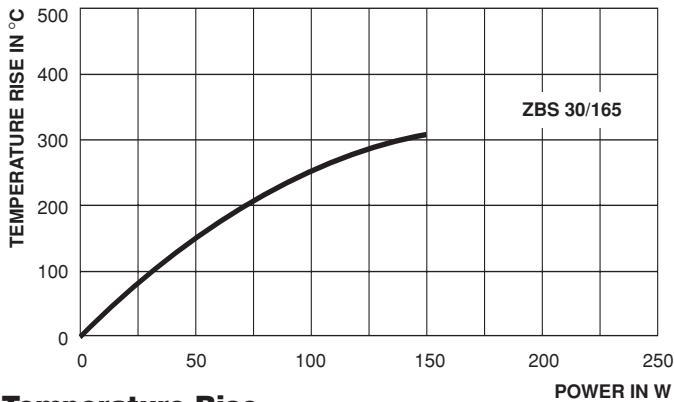
Temperature Rise



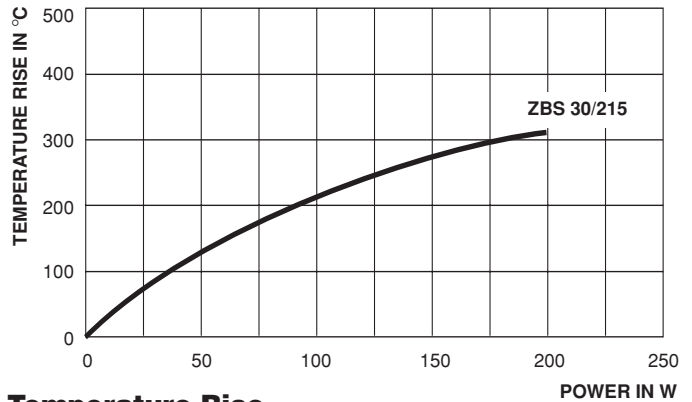
Temperature Rise



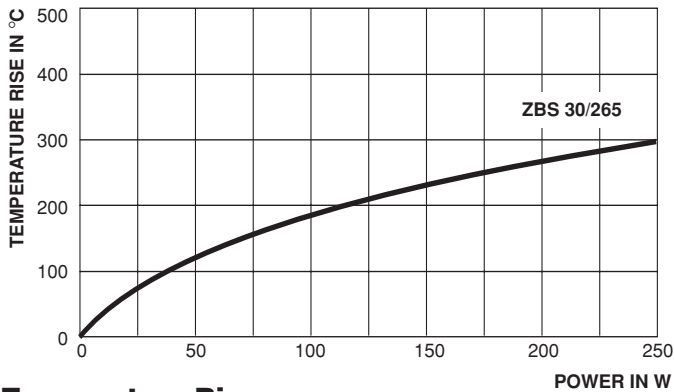
Temperature Rise



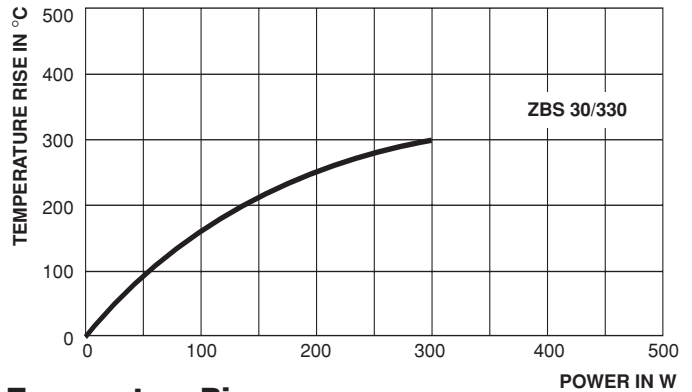
Temperature Rise



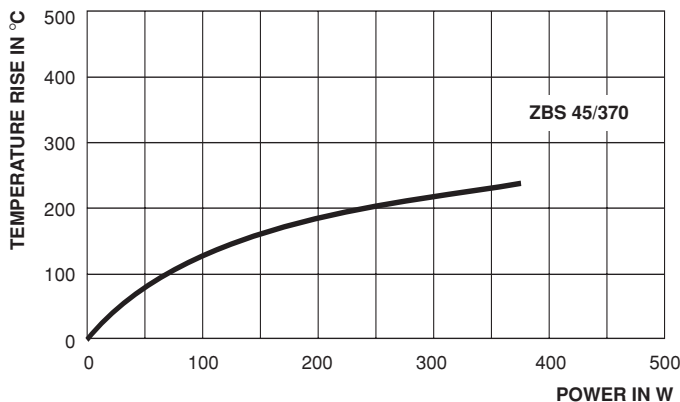
Temperature Rise



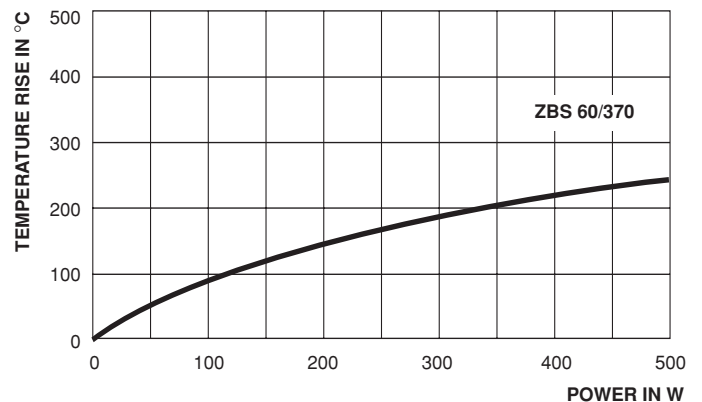
Temperature Rise



Temperature Rise



Temperature Rise



Temperature Rise