

PLEASE CHECK WWW.MOLEX.COM FOR LATEST PART INFORMATION

Part Number: [0879111209](#)
Status: **Active**
Overview: [cgrid_sl_products](#)
Description: 2.54mm (.100") Pitch C-Grid® Header, Right Angle, Through Hole, 12 Circuits, 2.50µm (98µ") Tin (Sn) Overall Plating, Tube Packaging, Lead- free

Documents:

[Drawing \(PDF\)](#) [RoHS Certificate of Compliance \(PDF\)](#)
[Product Specification PS-87920-019 \(PDF\)](#)

Agency Certification

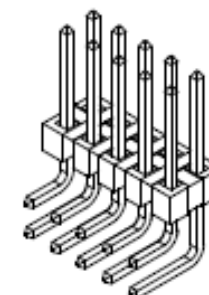
UL E29179

General

Product Family PCB Headers
 Series [87911](#)
 Application Board-to-Board, Wire-to-Board
 Overview [cgrid_sl_products](#)
 Product Name C-Grid®

Physical

Breakaway Yes
 Circuits (Loaded) 12
 Circuits (maximum) 12
 Color - Resin Black
 First Mate / Last Break No
 Flammability 94V-0
 Glow-Wire Compliant No
 Guide to Mating Part No
 Keying to Mating Part None
 Lock to Mating Part None
 Material - Metal Copper Alloy
 Material - Plating Mating Tin
 Material - Plating Termination Nickel
 Material - Resin High Temperature Thermoplastic
 Number of Rows 2
 Orientation Right Angle
 PC Tail Length (in) 0.110 In
 PC Tail Length (mm) 2.79 mm
 PCB Locator No
 PCB Retention None
 PCB Thickness Recommended (in) 0.062 In
 PCB Thickness Recommended (mm) 1.60 mm
 Packaging Type Tube
 Pitch - Mating Interface (in) 0.100 In
 Pitch - Mating Interface (mm) 2.54 mm
 Pitch - Term. Interface (in) 0.100 In
 Pitch - Term. Interface (mm) 2.54 mm
 Plating min: Mating (µin) 98
 Plating min: Mating (µm) 2.50
 Polarized to Mating Part No
 Polarized to PCB No
 Shrouded No
 Stackable No
 Surface Mount Compatible (SMC) Yes
 Temperature Range - Operating -55°C to +105°C



Series

image - Reference only

EU RoHS

ELV and RoHS Compliant
REACH SVHC
 Not Reviewed
Halogen-Free Status
 Not Reviewed

China RoHS



Need more information on product environmental compliance?

Email productcompliance@molex.com
 For a multiple part number RoHS Certificate of Compliance, [click here](#)

Please visit the [Contact Us](#) section for any non-product compliance questions.

Search Parts in this Series

[87911Series](#)

Mates With

7859 Shunts, C-Grid® PCB Receptacles like 71850, SL™ IDT Housing like 70450

Termination Interface: Style Through Hole

Electrical

Current - Maximum per Contact 3A
Voltage - Maximum 250V

Material Info

Reference - Drawing Numbers

Packaging Specification PK-89990-520
Product Specification PS-87920-019
Sales Drawing SD-87911-037

This document was generated on 05/25/2010

PLEASE CHECK WWW.MOLEX.COM FOR LATEST PART INFORMATION

F

F

E

E

D

D

C

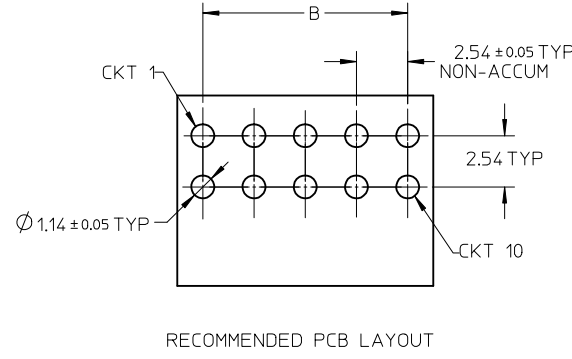
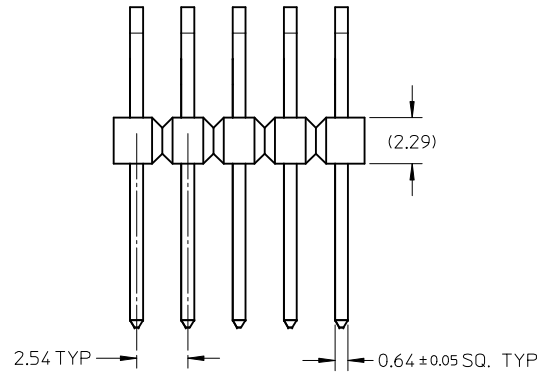
C

B

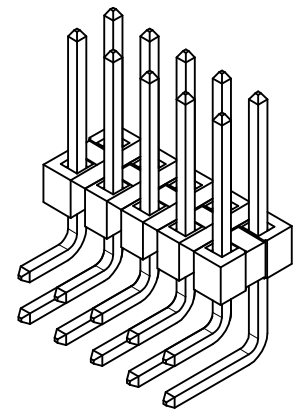
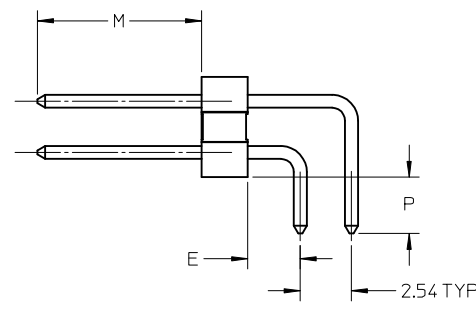
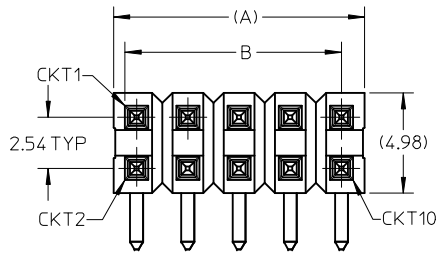
B

A

A



RECOMMENDED PCB LAYOUT



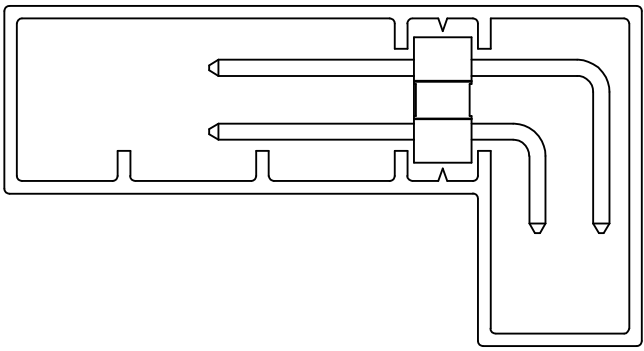
NOTES

1. MATERIAL:
 - HSG: LCP, GLASS-FILLED, UL94V-0
 - COLOR, BLACK
 - PIN: COPPER ALLOY 0.64 mm SQ.
2. PLATING TYPE:
 - (1) 0.38µm MIN GOLD IN CONTACT AREA OVER
2.00µm MIN TIN SELECTIVE IN SOLDER AREA BOTH OVER
1.25µm NICKEL OVERALL
 - (2) 0.75µm MIN GOLD IN CONTACT AREA OVER
2.00µm MIN TIN SELECTIVE IN SOLDER AREA BOTH OVER
1.25µm NICKEL OVERALL
 - (3) 2.50µm MIN TIN OVERALL
1.25µm NICKEL OVERALL
3. FOR PACKAGING OPTION PLEASE REFER TO THE TABLE
4. PCB THICKNESS 1.6+/-0.10mm
5. PIN PUSHOUT FORCE 1kgf MIN IN EITHER DIRECTION
6. PRODUCT SPECIFICATION: PS-87920-019
7. WAFER TO BE FLAT WITHIN 0.003 mm/mm
8. THE ABOVE 10CKT SHOWN IS FOR ILLUSTRATION ONLY.
9. EDGES WILL BE ROUGH OR IRREGULAR FOR THESE PARTS DUE TO BREAK-OFF. DIM SHOULD BE TAKEN AS REFERENCE
10. PACKAGING SPECIFICATION: PK-89990-520

PDR#1872.ADD 879112610 EC NO: S2009-0252 DRWN: YMCHEONG 2008/10/15 CHKD: SKANG 2008/10/16 APPR: MLONG 2008/10/16	DESCRIPTION REV	QUALITY SYMBOLS	GENERAL TOLERANCES (UNLESS SPECIFIED)	DIMENSION STYLE	SCALE	DESIGN UNITS	THIRD ANGLE PROJECTION
		▼=0 ∇=0	mm INCH	MM ONLY	NTS	METRIC	
		4 PLACES ± --- ± --- 3 PLACES ± --- ± --- 2 PLACES ± 0.20 ± --- 1 PLACE ± --- ± ---	DRAWN BY: SKLIM01 DATE: 2006/01/24 CHECKED BY: PATEY DATE: 2006/02/08 APPROVED BY: PATEY DATE: 2006/02/08	TITLE	CUSTOM HEADER C-GRID, DUAL ROW HEADER SINGLE WAFER, R/A		
		DRAFT WHERE APPLICABLE MUST REMAIN WITHIN DIMENSIONS	MATERIAL NO. SHEET NO. SEE TABLE 1 OF 5	MOLEX INCORPORATED SD-87911-037			

THIS DRAWING CONTAINS INFORMATION THAT IS PROPRIETARY TO MOLEX INCORPORATED AND SHOULD NOT BE USED WITHOUT WRITTEN PERMISSION

TRAY	TUBE WITHOUT CAP	TUBE WITH CAP	CKT SIZE	VOID POSITION	PLATING TYPE	DIMENSION				
						A	B	M	P	E
87911-0407	-----	-----	4	----	1	5.08	2.54	8.13	2.79	2.61
87911-0408	-----	-----	4	----	2	5.08	2.54	8.13	2.79	2.61
87911-0409	-----	-----	4	----	3	5.08	2.54	8.13	2.79	2.61
87911-0607	-----	-----	6	----	1	7.62	5.08	8.13	2.79	2.61
87911-0608	-----	-----	6	----	2	7.62	5.08	8.13	2.79	2.61
87911-0609	-----	-----	6	----	3	7.62	5.08	8.13	2.79	2.61
-----	87911-0807	-----	8	----	1	10.16	7.62	8.13	2.79	2.61
-----	87911-0808	-----	8	----	2	10.16	7.62	8.13	2.79	2.61
-----	87911-0809	-----	8	----	3	10.16	7.62	8.13	2.79	2.61
-----	87911-1007	-----	10	----	1	12.70	10.16	8.13	2.79	2.61
-----	87911-1008	-----	10	----	2	12.70	10.16	8.13	2.79	2.61
-----	87911-1009	-----	10	----	3	12.70	10.16	8.13	2.79	2.61
-----	87911-1207	-----	12	----	1	15.24	12.70	8.13	2.79	2.61
-----	87911-1208	-----	12	----	2	15.24	12.70	8.13	2.79	2.61
-----	87911-1209	-----	12	----	3	15.24	12.70	8.13	2.79	2.61
-----	87911-1407	-----	14	----	1	17.78	15.24	8.13	2.79	2.61
-----	87911-1408	-----	14	----	2	17.78	15.24	8.13	2.79	2.61
-----	87911-1409	-----	14	----	3	17.78	15.24	8.13	2.79	2.61



PART IN TUBE ORIENTATION

PDR#1872.ADD 879112610 EC NO: S2009-0252 DRWN: YMC HONG 2008/10/15 CHKD: SKANG 2008/10/16 APPR: MLONG 2008/10/16	DESCRIPTION REV	QUALITY SYMBOLS ▽=0 ◻=0	GENERAL TOLERANCES (UNLESS SPECIFIED)		DIMENSION STYLE MM ONLY		SCALE NTS	DESIGN UNITS METRIC	THIRD ANGLE PROJECTION	
		4 PLACES ± --- ± --- 3 PLACES ± --- ± --- 2 PLACES ± 0.20 ± --- 1 PLACE ± --- ± ---	mm INCH	DRAWN BY SKLIM01	DATE 2006/01/24	TITLE CUSTOM HEADER C-GRID, DUAL ROW HEADER SINGLE WAFER, R/A				
		ANGULAR ± 3 °		CHECKED BY PATEY	DATE 2006/02/08	MOLEX INCORPORATED				
		DRAFT WHERE APPLICABLE MUST REMAIN WITHIN DIMENSIONS		APPROVED BY PATEY	DATE 2006/02/08	MATERIAL NO. SEE TABLE	DOCUMENT NO. SD-87911-037	SHEET NO. 2 OF 5		

PACKAGING OPTION PART NO.										PACKAGING OPTION PART NO.												
TRAY	TUBE WITHOUT CAP	TUBE WITH CAP	CKT SIZE	VOID POSITION	PLATING TYPE	DIMENSION					TRAY	TUBE WITHOUT CAP	TUBE WITH CAP	CKT SIZE	VOID POSITION	PLATING TYPE	DIMENSION					
						A	B	M	P	E							A	B	M	P	E	
F	-----	87911-1607	-----	16	----	1	20.32	17.78	8.13	2.79	2.61	-----	87911-2807	-----	28	----	1	35.56	33.02	8.13	2.79	2.61
	-----	87911-1608	-----	16	----	2	20.32	17.78	8.13	2.79	2.61	-----	87911-2808	-----	28	----	2	35.56	33.02	8.13	2.79	2.61
	-----	87911-1609	-----	16	----	3	20.32	17.78	8.13	2.79	2.61	-----	87911-2809	-----	28	----	3	35.56	33.02	8.13	2.79	2.61
	-----	87911-1807	-----	18	----	1	22.86	20.32	8.13	2.79	2.61	-----	87911-3007	-----	30	----	1	38.10	35.56	8.13	2.79	2.61
	-----	87911-1808	-----	18	----	2	22.86	20.32	8.13	2.79	2.61	-----	87911-3008	-----	30	----	2	38.10	35.56	8.13	2.79	2.61
E	-----	87911-1809	-----	18	----	3	22.86	20.32	8.13	2.79	2.61	-----	87911-3009	-----	30	----	3	38.10	35.56	8.13	2.79	2.61
	-----	87911-2007	-----	20	----	1	25.40	22.86	8.13	2.79	2.61	-----	87911-3207	-----	32	----	1	40.64	38.10	8.13	2.79	2.61
	-----	87911-2008	-----	20	----	2	25.40	22.86	8.13	2.79	2.61	-----	87911-3208	-----	32	----	2	40.64	38.10	8.13	2.79	2.61
	-----	87911-2009	-----	20	----	3	25.40	22.86	8.13	2.79	2.61	-----	87911-3209	-----	32	----	3	40.64	38.10	8.13	2.79	2.61
D	-----	87911-2207	-----	22	----	1	27.94	25.40	8.13	2.79	2.61	-----	87911-3407	-----	34	----	1	43.18	40.64	8.13	2.79	2.61
	-----	87911-2208	-----	22	----	2	27.94	25.40	8.13	2.79	2.61	-----	87911-3408	-----	34	----	2	43.18	40.64	8.13	2.79	2.61
	-----	87911-2209	-----	22	----	3	27.94	25.40	8.13	2.79	2.61	-----	87911-3409	-----	34	----	3	43.18	40.64	8.13	2.79	2.61
	-----	87911-2407	-----	24	----	1	30.48	27.94	8.13	2.79	2.61	-----	87911-3607	-----	36	----	1	45.72	43.18	8.13	2.79	2.61
	-----	87911-2408	-----	24	----	2	30.48	27.94	8.13	2.79	2.61	-----	87911-3608	-----	36	----	2	45.72	43.18	8.13	2.79	2.61
C	-----	87911-2409	-----	24	----	3	30.48	27.94	8.13	2.79	2.61	-----	87911-3609	-----	36	----	3	45.72	43.18	8.13	2.79	2.61
	-----	87911-2607	-----	26	----	1	33.02	30.48	8.13	2.79	2.61	-----	87911-3807	-----	38	----	1	48.26	45.72	8.13	2.79	2.61
	-----	87911-2608	-----	26	----	2	33.02	30.48	8.13	2.79	2.61	-----	87911-3808	-----	38	----	2	48.26	45.72	8.13	2.79	2.61
	-----	87911-2609	-----	26	----	3	33.02	30.48	8.13	2.79	2.61	-----	87911-3809	-----	38	----	3	48.26	45.72	8.13	2.79	2.61
B	-----	87911-2610	-----	26	----	3	33.02	30.48	4.00	2.79	1.32											

PDR#1872.ADD 879112610 EC NO: S2009-0252 2008/10/15 DRWN: YICHONG 2008/10/16 CHKD: SKANG 2008/10/16 APPR: MLONG 2008/10/16	QUALITY SYMBOLS =0 =0	GENERAL TOLERANCES (UNLESS SPECIFIED)		DIMENSION STYLE MM ONLY		SCALE NTS	DESIGN UNITS METRIC	THIRD ANGLE PROJECTION			
		mm INCH		DRAWN BY DATE SKLIM01 2006/01/24		TITLE CUSTOM HEADER		C-GRID, DUAL ROW HEADER			
		4 PLACES ± --- ± --- 3 PLACES ± --- ± --- 2 PLACES ± 0.20 ± --- 1 PLACE ± --- ± ---		CHECKED BY DATE PATEY 2006/02/08		APPROVED BY DATE PATEY 2006/02/08		MOLEX INCORPORATED		SHEET NO. 3 OF 5	
		ANGULAR ± 3 °		MATERIAL NO. SEE TABLE		DOCUMENT NO. SD-87911-037		THIS DRAWING CONTAINS INFORMATION THAT IS PROPRIETARY TO MOLEX INCORPORATED AND SHOULD NOT BE USED WITHOUT WRITTEN PERMISSION			

PACKAGING OPTION PART NO.										PACKAGING OPTION PART NO.												
TRAY	TUBE WITHOUT CAP	TUBE WITH CAP	CKT SIZE	VOID POSITION	PLATING TYPE	DIMENSION					TRAY	TUBE WITHOUT CAP	TUBE WITH CAP	CKT SIZE	VOID POSITION	PLATING TYPE	DIMENSION					
						A	B	M	P	E							A	B	M	P	E	
F	-----	87911-4007	-----	40	----	1	50.80	48.26	8.13	2.79	2.61	-----	87911-5207	-----	52	----	1	66.04	63.50	8.13	2.79	2.61
	-----	87911-4008	-----	40	----	2	50.80	48.26	8.13	2.79	2.61	-----	87911-5208	-----	52	----	2	66.04	63.50	8.13	2.79	2.61
	-----	87911-4009	-----	40	----	3	50.80	48.26	8.13	2.79	2.61	-----	87911-5209	-----	52	----	3	66.04	63.50	8.13	2.79	2.61
	-----	87911-4207	-----	42	----	1	53.34	50.80	8.13	2.79	2.61	-----	87911-5407	-----	54	----	1	68.58	66.04	8.13	2.79	2.61
	-----	87911-4208	-----	42	----	2	53.34	50.80	8.13	2.79	2.61	-----	87911-5408	-----	54	----	2	68.58	66.04	8.13	2.79	2.61
E	-----	87911-4209	-----	42	----	3	53.34	50.80	8.13	2.79	2.61	-----	87911-5409	-----	54	----	3	68.58	66.04	8.13	2.79	2.61
	-----	87911-4407	-----	44	----	1	55.88	53.34	8.13	2.79	2.61	-----	87911-5607	-----	56	----	1	71.12	68.58	8.13	2.79	2.61
	-----	87911-4408	-----	44	----	2	55.88	53.34	8.13	2.79	2.61	-----	87911-5608	-----	56	----	2	71.12	68.58	8.13	2.79	2.61
	-----	87911-4409	-----	44	----	3	55.88	53.34	8.13	2.79	2.61	-----	87911-5609	-----	56	----	3	71.12	68.58	8.13	2.79	2.61
D	-----	87911-4607	-----	46	----	1	58.42	55.88	8.13	2.79	2.61	-----	87911-5807	-----	58	----	1	73.66	71.12	8.13	2.79	2.61
	-----	87911-4608	-----	46	----	2	58.42	55.88	8.13	2.79	2.61	-----	87911-5808	-----	58	----	2	73.66	71.12	8.13	2.79	2.61
	-----	87911-4609	-----	46	----	3	58.42	55.88	8.13	2.79	2.61	-----	87911-5809	-----	58	----	3	73.66	71.12	8.13	2.79	2.61
	-----	87911-4807	-----	48	----	1	60.96	58.42	8.13	2.79	2.61	-----	87911-6007	-----	60	----	1	76.20	73.66	8.13	2.79	2.61
	-----	87911-4808	-----	48	----	2	60.96	58.42	8.13	2.79	2.61	-----	87911-6008	-----	60	----	2	76.20	73.66	8.13	2.79	2.61
C	-----	87911-4809	-----	48	----	3	60.96	58.42	8.13	2.79	2.61	-----	87911-6009	-----	60	----	3	76.20	73.66	8.13	2.79	2.61
	-----	87911-5007	-----	50	----	1	63.50	60.96	8.13	2.79	2.61	-----	87911-6207	-----	62	----	1	78.74	76.20	8.13	2.79	2.61
	-----	87911-5008	-----	50	----	2	63.50	60.96	8.13	2.79	2.61	-----	87911-6208	-----	62	----	2	78.74	76.20	8.13	2.79	2.61
	-----	87911-5009	-----	50	----	3	63.50	60.96	8.13	2.79	2.61	-----	87911-6209	-----	62	----	3	78.74	76.20	8.13	2.79	2.61
B																						

PDR#1872.ADD 879112610 EC NO: S2009-0252 2008/10/15 DRWN: YICHONG 2008/10/16 CHKD: SKANG 2008/10/16 APPR: MLONG 2008/10/16	QUALITY SYMBOLS = 0 = 0	GENERAL TOLERANCES (UNLESS SPECIFIED)		DIMENSION STYLE MM ONLY		SCALE NTS	DESIGN UNITS METRIC	THIRD ANGLE PROJECTION			
		4 PLACES ± --- ± --- 3 PLACES ± --- ± --- 2 PLACES ± 0.20 ± --- 1 PLACE ± --- ± ---	mm INCH	DRAWN BY SKLIM01	DATE 2006/01/24	TITLE CUSTOM HEADER C-GRID, DUAL ROW HEADER SINGLE WAFER, R/A					
		ANGULAR ± 3 °		CHECKED BY PATEY	DATE 2006/02/08	MOLEX INCORPORATED					
		DRAFT WHERE APPLICABLE MUST REMAIN WITHIN DIMENSIONS		APPROVED BY PATEY	DATE 2006/02/08	MATERIAL NO. SEE TABLE	DOCUMENT NO. SD-87911-037	SHEET NO. 4 OF 5			

PACKAGING OPTION PART NO.										PACKAGING OPTION PART NO.												
TRAY	TUBE WITHOUT CAP	TUBE WITH CAP	CKT SIZE	VOID POSITION	PLATING TYPE	DIMENSION					TRAY	TUBE WITHOUT CAP	TUBE WITH CAP	CKT SIZE	VOID POSITION	PLATING TYPE	DIMENSION					
						A	B	M	P	E							A	B	M	P	E	
F	-----	87911-6407	-----	64	----	1	81.28	78.74	8.13	2.79	2.61	-----	87911-7607	-----	76	----	1	96.52	93.98	8.13	2.79	2.61
	-----	87911-6408	-----	64	----	2	81.28	78.74	8.13	2.79	2.61	-----	87911-7608	-----	76	----	2	96.52	93.98	8.13	2.79	2.61
	-----	87911-6409	-----	64	----	3	81.28	78.74	8.13	2.79	2.61	-----	87911-7609	-----	76	----	3	96.52	93.98	8.13	2.79	2.61
	-----	87911-6607	-----	66	----	1	83.82	81.28	8.13	2.79	2.61	-----	87911-7807	-----	78	----	1	99.06	96.52	8.13	2.79	2.61
	-----	87911-6608	-----	66	----	2	83.82	81.28	8.13	2.79	2.61	-----	87911-7808	-----	78	----	2	99.06	96.52	8.13	2.79	2.61
E	-----	87911-6609	-----	66	----	3	83.82	81.28	8.13	2.79	2.61	-----	87911-7809	-----	78	----	3	99.06	96.52	8.13	2.79	2.61
	-----	87911-6807	-----	68	----	1	86.36	83.82	8.13	2.79	2.61	-----	87911-8007	-----	80	----	1	101.60	99.06	8.13	2.79	2.61
	-----	87911-6808	-----	68	----	2	86.36	83.82	8.13	2.79	2.61	-----	87911-8008	-----	80	----	2	101.60	99.06	8.13	2.79	2.61
	-----	87911-6809	-----	68	----	3	86.36	83.82	8.13	2.79	2.61	-----	87911-8009	-----	80	----	3	101.60	99.06	8.13	2.79	2.61
D	-----	87911-7007	-----	70	----	1	88.90	86.36	8.13	2.79	2.61											
	-----	87911-7008	-----	70	----	2	88.90	86.36	8.13	2.79	2.61											
	-----	87911-7009	-----	70	----	3	88.90	86.36	8.13	2.79	2.61											
	-----	87911-7207	-----	72	----	1	91.44	88.90	8.13	2.79	2.61											
	-----	87911-7208	-----	72	----	2	91.44	88.90	8.13	2.79	2.61											
C	-----	87911-7209	-----	72	----	3	91.44	88.90	8.13	2.79	2.61											
	-----	87911-7407	-----	74	----	1	93.98	91.44	8.13	2.79	2.61											
	-----	87911-7408	-----	74	----	2	93.98	91.44	8.13	2.79	2.61											
	-----	87911-7409	-----	74	----	3	93.98	91.44	8.13	2.79	2.61											
B																						

PDR#1872.ADD 879112610 EC NO: S2009-0252 2008/10/15 DRWN: YICHONG 2008/10/16 CHKD: SKANG 2008/10/16 APPR: MLONG 2008/10/16	QUALITY SYMBOLS ▽=0 ◻=0	GENERAL TOLERANCES (UNLESS SPECIFIED)		DIMENSION STYLE MM ONLY		SCALE NTS	DESIGN UNITS METRIC	THIRD ANGLE PROJECTION		
				DRAWN BY SKLIM01	DATE 2006/01/24	TITLE CUSTOM HEADER C-GRID, DUAL ROW HEADER SINGLE WAFER, R/A				
				CHECKED BY PATEY	DATE 2006/02/08	MOLEX INCORPORATED				
				APPROVED BY PATEY	DATE 2006/02/08	MATERIAL NO. SEE TABLE	DOCUMENT NO. SD-87911-037	SHEET NO. 5 OF 5		
B2		DRAFT WHERE APPLICABLE MUST REMAIN WITHIN DIMENSIONS		THIS DRAWING CONTAINS INFORMATION THAT IS PROPRIETARY TO MOLEX INCORPORATED AND SHOULD NOT BE USED WITHOUT WRITTEN PERMISSION						