

PLEASE CHECK WWW.MOLEX.COM FOR LATEST PART INFORMATION

Part Number: [0473521001](#)
Status: **Active**
Description: 1.10mm (.043") Pitch microSD Card Connector, Push-Push Type, with VSS (Supply Voltage Ground) Detect Switch, Lead Free

Documents:

[3D Model](#) [Product Specification PS-47334-001 \(PDF\)](#)
[Drawing \(PDF\)](#) [RoHS Certificate of Compliance \(PDF\)](#)

General

Product Family	Memory Card Sockets
Series	47352
Button Type	Push-Push
Comments	Push-Push Type With VSS (Supply Voltage Ground) Detect Switch
Component Type	Header & Ejector (Host)
Product Name	microSD Card, TransFlash
Type	N/A

Physical

Card Detection Switch	Open
Circuits (Loaded)	8
Circuits (maximum)	8
Color - Resin	Black
Durability (mating cycles max)	5,000
Ejector Button Side	No Ejector Button Present
Entry Angle	90° Angle (Side Entry)
Keying to Mating Part	Yes
Material - Metal	Stainless Steel
Material - Plating Mating	Gold
Material - Plating Termination	Tin
Material - Resin	High Temperature Thermoplastic
PCB Locator	No
PCB Mounting Side	Normal
PCB Retention	Yes
Packaging Type	Embossed Tape on Reel
Pitch - Mating Interface (in)	0.043 In
Pitch - Mating Interface (mm)	1.10 mm
Pitch - Term. Interface (in)	0.043 In
Pitch - Term. Interface (mm)	1.10 mm
Ports	1
Temperature Range - Operating	-20°C to +85°C
Termination Interface: Style	Surface Mount

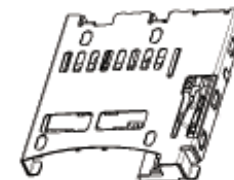
Electrical

Current - Maximum per Contact	0.5A
Shielded	Yes
Voltage - Maximum	100V DC

Solder Process Data

Duration at Max. Process Temperature (seconds)	10
Lead-free Process Capability	Reflow Capable (SMT only)
Max. Cycles at Max. Process Temperature	2
Process Temperature max. C	250

Material Info



Series

image - Reference only

EU RoHS

ELV and RoHS Compliant
REACH SVHC
 Not Reviewed
Halogen-Free Status
 Not Reviewed

China RoHS



Need more information on product environmental compliance?

Email productcompliance@molex.com
 For a multiple part number RoHS Certificate of Compliance, [click here](#)

Please visit the [Contact Us](#) section for any non-product compliance questions.

Search Parts in this Series

[47352Series](#)

Use With

microSD Card

Reference - Drawing Numbers

Packaging Specification

Product Specification

Sales Drawing

Test Summary

PK-47219-001, PK-47352-101

PS-47334-001

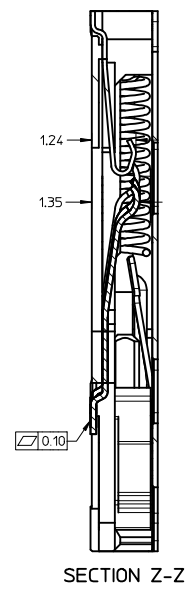
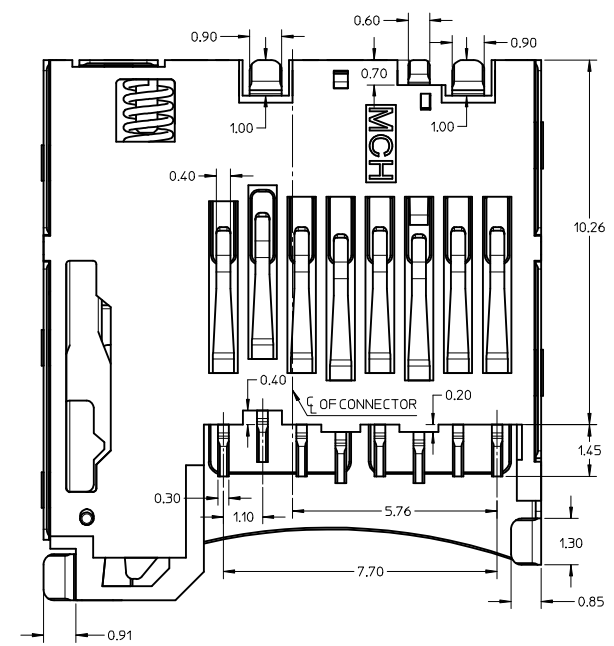
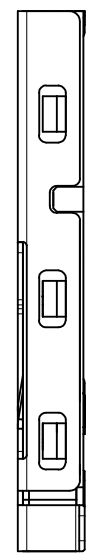
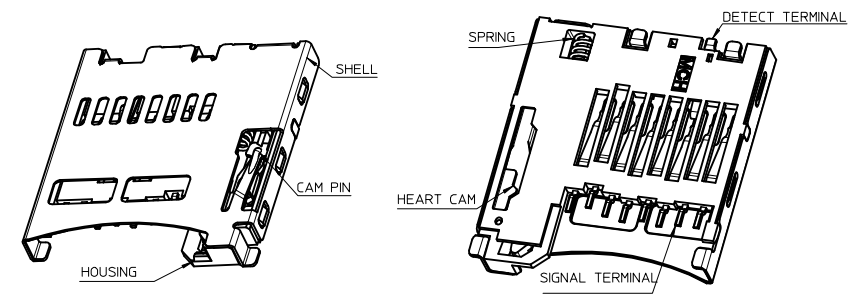
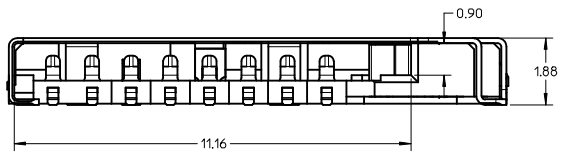
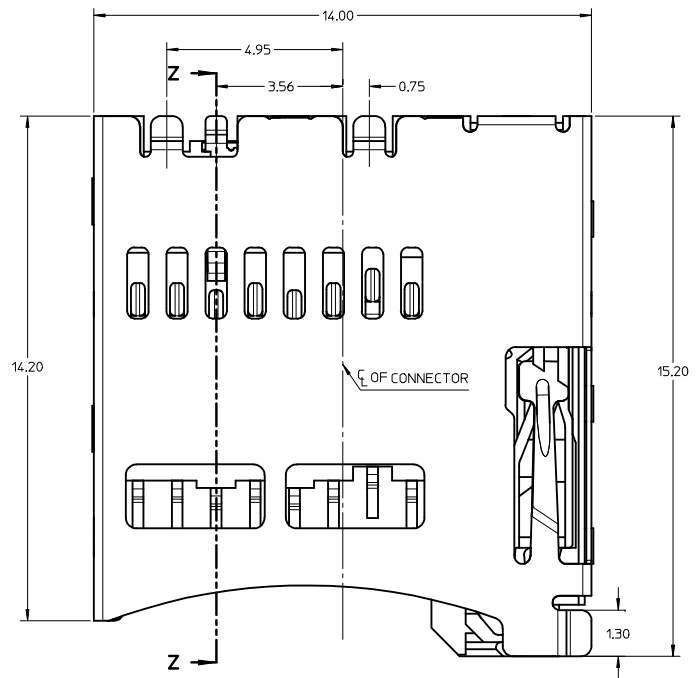
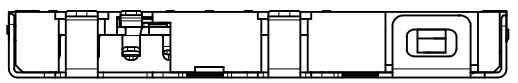
SD-47352-101

TS-47334-001

This document was generated on 06/07/2010

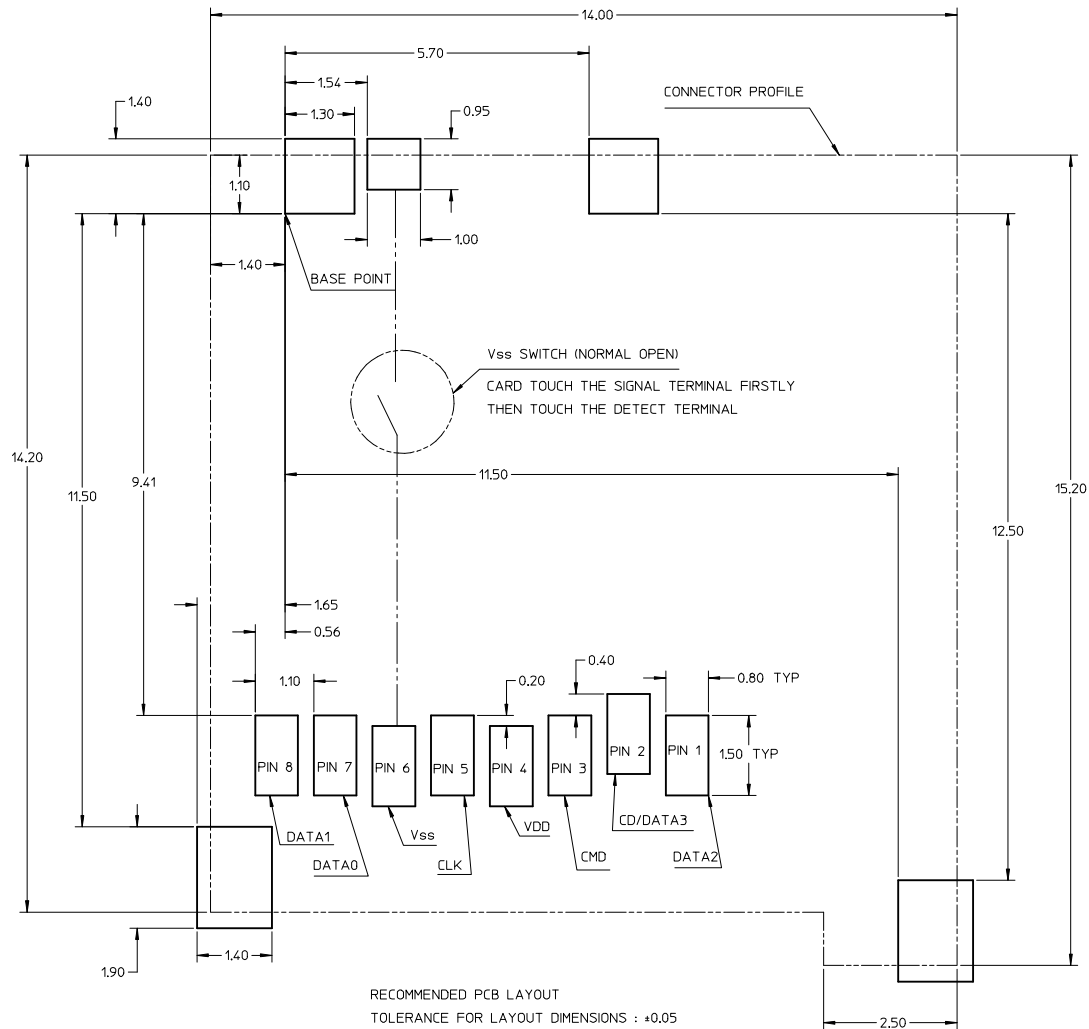
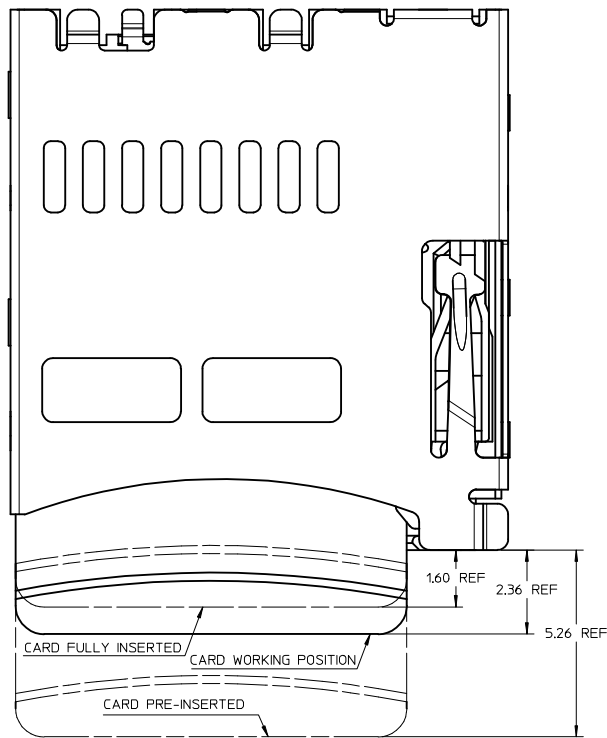
PLEASE CHECK WWW.MOLEX.COM FOR LATEST PART INFORMATION

13 12 11 10 9 8 7 6 5 4 3 2 1



REVISE EC NO: SHZ008-0541 DRAWN: XJ SONG 2009/03/13 CHKD: XJ SONG 2009/03/18 APPR: HWANG 2009/05/07	DESCRIPTION TFR&MICRO SD CARD READER PUSH PUSH TYPE VSS DETECT SWITCH	QUALITY SYMBOLS ▽=0 ▽=0		GENERAL TOLERANCES (UNLESS SPECIFIED) 4 PLACES ± --- ± --- 3 PLACES ± --- ± --- 2 PLACES ± 0.15 ± --- 1 PLACE ± --- ± --- ANGULAR ± 1/2°		DIMENSION STYLE MM ONLY		SCALE 10:1	DESIGN UNITS METRIC	THIRD ANGLE PROJECTION	
		DRAWN BY XU XIANG		DATE 2005-11-14		TITLE TFR&MICRO SD CARD READER PUSH PUSH TYPE VSS DETECT SWITCH		MOLEX INCORPORATED		SHEET NO. 1 OF 2	
		CHECKED BY XU XIANG		DATE 2006-06-22		APPROVED BY YJWU		DATE 2006-06-22		DOCUMENT NO. SD-47352-101	
		MATERIAL NO. 473521001		SIZE A2		THIS DRAWING CONTAINS INFORMATION THAT IS PROPRIETARY TO MOLEX INCORPORATED AND SHOULD NOT BE USED WITHOUT WRITTEN PERMISSION					

12 11 10 9 8 7 6 5 4 3 2 1



RECOMMENDED PCB LAYOUT
TOLERANCE FOR LAYOUT DIMENSIONS : ±0.05

- NOTES:
- MATERIAL:
 - 1-1 SIGNAL TERMINAL, DETECT TERMINAL : COPPER ALLOY
 - 1-2 SHELL, CAM PIN, SPRING : STAINLESS STEEL
 - 1-3 HOUSING, CAM : LCP, UL 94-V0, BLACK
 - FINISH:
 - 2-1 SIGNAL & DETECT TERMINAL : NICKEL UNDERPLATED, GOLD PLATING ON CONTACT AREA TIN PLATING ON SOLDER TAIL
 - 2-2 SHELL : GOLD FLASH OVER NICKEL UNDERPLATED ON SOLDER PAD
 - MECHANICAL SPECIFICATION:
 - REPEATED 5,000 TIMES MATING AND UNMATING CYCLES AND STILL MEET ELECTRICAL CHARACTERISTICS
 - ELECTRICAL SPECIFICATION:
 - 4-1 RATED CURRENT (PER CONTACT) : 0.5AMPS MAX AND TEMPERATURE RISE SHOULD BE 30°C MAX
 - 4-2 INSULATION RESISTANCE(IR) : 100 MEGOHMS MIN.
 - 4-3 DIELECTRIC WITHSTANDING VOLTAGE : 500 VAC
 - 4-4 CONTACT RESISTANCE: 100 MILLIOHMS MAX

SEE SHEET1 EC NO: SHZ008-0541 DRAWN: XJ SONG 2009/03/13 CHKD: XJ SONG 2009/03/18 APPR: HWANG 2009/05/07	QUALITY SYMBOLS ▽=0 ▽=0	GENERAL TOLERANCES (UNLESS SPECIFIED)		DIMENSION STYLE MM ONLY		SCALE 10:1	DESIGN UNITS METRIC	THIRD ANGLE PROJECTION	
		4 PLACES ± --- ± ---	mm INCH	DRAWN BY XU XIANG	DATE 2005-11-14	TITLE TFR&MICRO SD CARD READER PUSH PUSH TYPE VSS DETECT SWITCH			
		3 PLACES ± --- ± ---		CHECKED BY XU XIANG	DATE 2006-06-22	MOLEX INCORPORATED			
		2 PLACES ± 0.15 ± ---		APPROVED BY YJWU	DATE 2006-06-22	MATERIAL NO. 473521001	DOCUMENT NO. SD-47352-101	SHEET NO. 2 OF 2	
		1 PLACE ± --- ± ---		DRAFT WHERE APPLICABLE MUST REMAIN WITHIN DIMENSIONS					
		ANGULAR ± 1/2°	THIS DRAWING CONTAINS INFORMATION THAT IS PROPRIETARY TO MOLEX INCORPORATED AND SHOULD NOT BE USED WITHOUT WRITTEN PERMISSION						