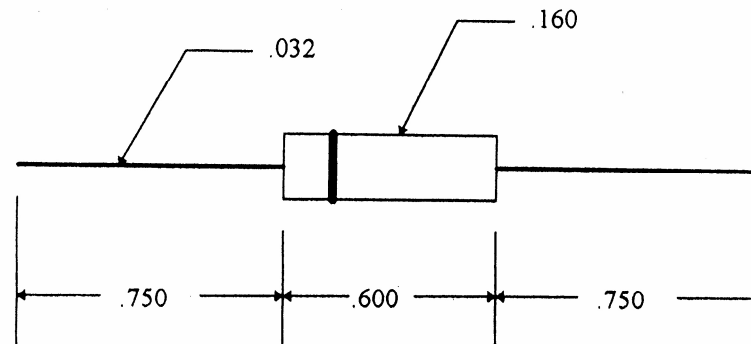


SUB-MINIATURE SILICON HIGH VOLTAGE RECTIFIER



PART NUMBER	PIV VOLTS	I_o AMPS @ 40° C	V_f @ I_o @ 25° C	I_r @ PIV @ 25° C	MAX SINGLE CYCLE SURGE CURRENT	T_{rr}
BS780-50	5000	.45	10	1 uA	25 AMPS	150 nSec
BS780-60	6000	.30	15	1 uA	25 AMPS	150 nSec
BS780-70	7000	.22	18	1 uA	25 AMPS	150 nSec
BS780-80	8000	.20	18	1 uA	25 AMPS	150 nSec
BS780-90	9000	.18	18	1 uA	25 AMPS	150 nSec
BS780-100	10000	.15	23	1 uA	25 AMPS	150 nSec
BS780-110	11000	.15	23	1 uA	25 AMPS	150 nSec
BS780-120	12000	.15	23	1 uA	25 AMPS	150 nSec
BS780-130	13000	.15	23	1 uA	25 AMPS	150 nSec
BS780-140	14000	.15	23	1 uA	25 AMPS	150 nSec
BS780-150	15000	.10	38	1 uA	25 AMPS	150 nSec
BS780-160	16000	.10	38	1 uA	25 AMPS	150 nSec
BS780-170	17000	.10	38	1 uA	25 AMPS	150 nSec
BS780-180	18000	.10	38	1 uA	25 AMPS	150 nSec
BS780-200	20000	.075	45	1 uA	25 AMPS	150 nSec

RECOVERY TIME: If = 20 mA, iR = 40 mA RECOVER TO 10 mA

SUFFIX "A" REPRESENTS AVALANCHE CHARACTERISTICS EX: BS780-150A

(203) 467-2591 TEL

(203) 469-5928 FAX

Email: Info@ edal.com

Internet: http://www.edal.com

EDAL industries, inc.

51 Commerce St. East Haven, CT 06512