

PLEASE CHECK WWW.MOLEX.COM FOR LATEST PART INFORMATION

Part Number: [0879144405](#)
Status: **Active**
Overview: [cgrid_sl_products](#)
Description: 2.54mm (.100") Pitch C-Grid® Header, Through Hole, Dual Row, Vertical, 44 Circuits, 0.76µm (30µ") Gold (Au) Plating, Tray Packaging, Lead-free

Documents:

[Drawing \(PDF\)](#) [RoHS Certificate of Compliance \(PDF\)](#)
[Product Specification PS-87920-019 \(PDF\)](#)

General

Product Family	PCB Headers
Series	87914
Application	Board-to-Board, Wire-to-Board
Overview	cgrid_sl_products
Product Name	C-Grid®

Physical

Breakaway	Yes
Circuits (Loaded)	44
Circuits (maximum)	44
Color - Resin	Black
First Mate / Last Break	No
Glow-Wire Compliant	No
Guide to Mating Part	No
Keying to Mating Part	None
Lock to Mating Part	None
Mated Height (in)	0.240 In
Mated Height (mm)	6.10 mm
Material - Metal	Copper Alloy
Material - Plating Mating	Gold
Material - Plating Termination	Tin
Material - Resin	High Temperature Thermoplastic
Number of Rows	2
Orientation	Vertical
PC Tail Length (in)	0.107 In
PC Tail Length (mm)	2.72 mm
PCB Locator	No
PCB Retention	None
PCB Thickness Recommended (in)	0.062 In
PCB Thickness Recommended (mm)	1.60 mm
Packaging Type	Tray
Pitch - Mating Interface (in)	0.100 In
Pitch - Mating Interface (mm)	2.54 mm
Pitch - Term. Interface (in)	0.100 In
Pitch - Term. Interface (mm)	2.54 mm
Polarized to Mating Part	No
Polarized to PCB	No
Shrouded	No
Stackable	No
Surface Mount Compatible (SMC)	Yes
Temperature Range - Operating	-55°C to +105°C
Termination Interface: Style	Through Hole

Electrical

Current - Maximum per Contact	3A
-------------------------------	----

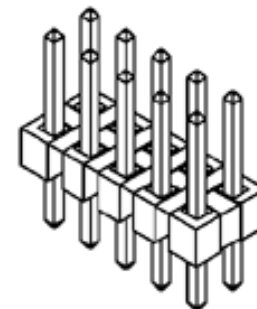


image - Reference only

Series

EU RoHS

**ELV and RoHS
Compliant**
**REACH SVHC
Not Reviewed**
**Halogen-Free
Status**

China RoHS



**Need more information on product
environmental compliance?**

Email productcompliance@molex.com
For a multiple part number RoHS Certificate of Compliance, [click here](#)

Please visit the [Contact Us](#) section for any non-product compliance questions.

Search Parts in this Series

87914Series

Mates With

7859 Shunts, C-Grid® PCB Receptacles like 71850, SL™ IDT Housing like 70450

Voltage - Maximum

250V

Material Info

Reference - Drawing Numbers

Packaging Specification

PK-89990-489

Product Specification

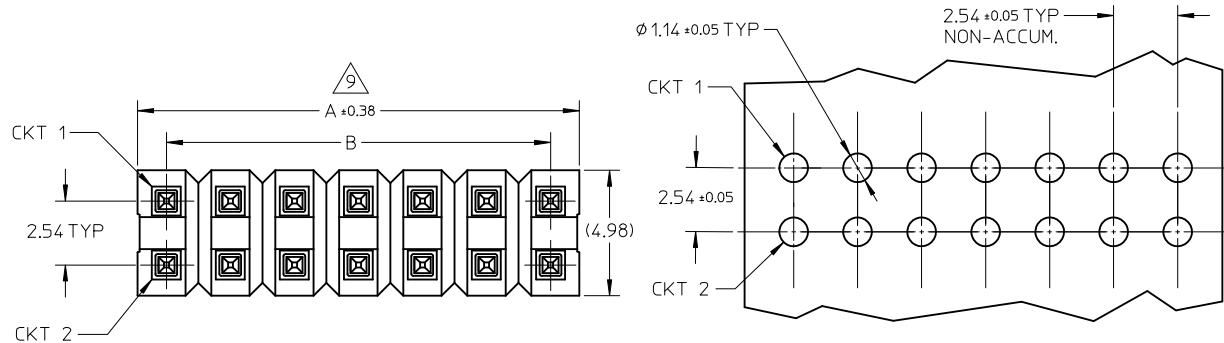
PS-87920-019

Sales Drawing

SD-87914-013, SD-87914-059

This document was generated on 05/26/2010

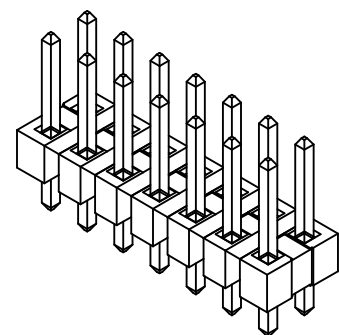
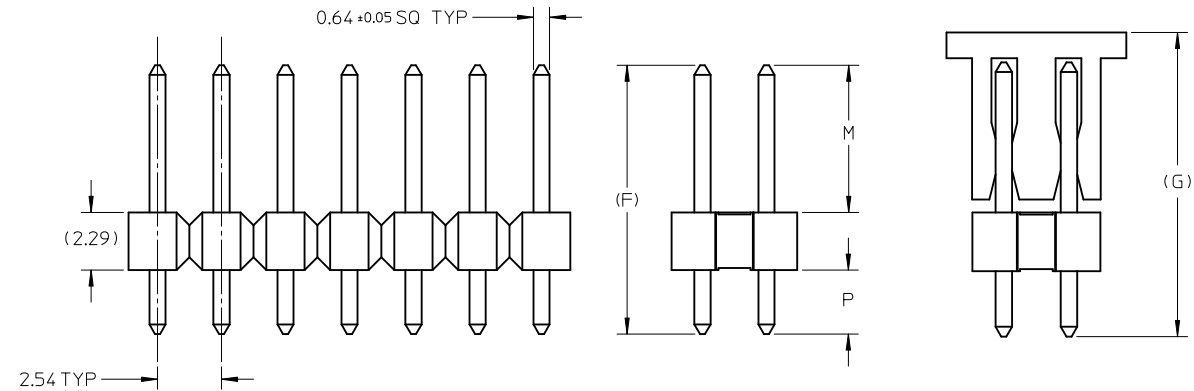
PLEASE CHECK WWW.MOLEX.COM FOR LATEST PART INFORMATION



RECOMMENDED P.C.B HOLE LAYOUT

NOTES:

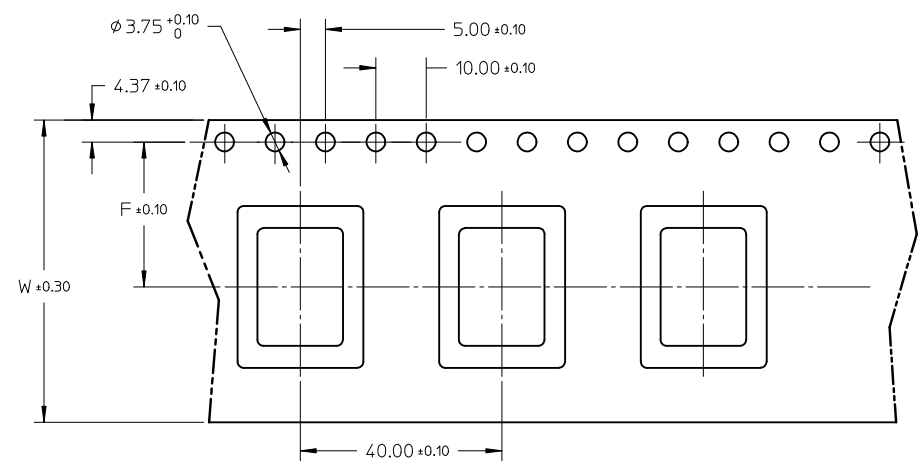
1. MATERIAL:
 - HSG: LCP, GLASS-FILLED, UL94V-0, COLOR: BLACK
 - PIN: 0.64MM SQ PIN, COPPER ALLOY
2. PLATING TYPE:
 - (1) : GOLD FLASH OVER
1.25 MICRO METER MIN. NICKEL OVERALL.
 - (2) : 0.025 μm MIN. GOLD PLATE ON CONTACT AND 1.88 μm MIN. TIN ON SOLDERTAIL OVER 1.25 μm MIN. NICKEL OVERALL.
 - (3) : 0.25 μm MIN. GOLD PLATE ON CONTACT AND 1.88 μm MIN. TIN ON SOLDERTAIL OVER 1.25 μm MIN. NICKEL OVERALL.
 - (4) : 0.38 μm MIN. GOLD PLATE ON CONTACT AND 1.88 μm MIN. TIN ON SOLDERTAIL OVER 1.25 μm MIN. NICKEL OVERALL.
 - (5) : 0.75 μm MIN. GOLD PLATE ON CONTACT AND 1.88 μm MIN. TIN ON SOLDERTAIL OVER 1.25 μm MIN. NICKEL OVERALL
 - (6) : 2.50 μm MIN. TIN IN SELECTED AREA OVER 1.25 μm MIN. NICKEL OVERALL.
 - (7) : 0.38 μm MIN. GOLD PLATE ON CONTACT AND 2.50 μm MIN. TIN ON SOLDERTAIL OVER 1.25 μm MIN. NICKEL OVERALL.
 - (8) : 0.38 μm MIN. GOLD PLATE ON CONTACT AND 0.05 μm MIN. GOLD FLASH ON SOLDERTAIL OVER 1.25 μm MIN. NICKEL OVERALL.
3. PIN PUSHOUT FORCE: 1KG MIN IN EITHER DIRECTION
4. THE ABOVE 14 CKT IS FOR ILLUSTRATION PURPOSE ONLY.
5. FOR PACKAGING OPTION PLEASE REFER TO THE TABLE.
6. RECOMMENDED PCB THICKNESS 1.60MM.
7. PRODUCT SPECIFICATION: PS-87920-019
8. WAFER TO BE FLAT WITHIN 0.003mm/mm
9. IRREGULAR CIRCUIT CUTOFF WITHIN BREAKAWAY SECTION IS PERMISSIBLE. CUTTING OR CHIPPING OF THE MAIN BODY IS NOT ACCEPTABLE.
10. PARTS ARE NOT STACKABLE ON 2.54 CENTER
11. CAP TO BE PLACED AS CENTRAL OF PART AS POSSIBLE WITH THE TOP SURFACE FLAT FOR PICK AND PLACE.
12. PACKAGING SPECIFICATION:
 - TRAY: PK-89990-489
 - BULK: PK-89990-491



PG8. +879140108 EC NO: S2010-0695 DRWN:ATSEE 2010/02/11 CHKD:PTLIM 2004/12/08 APPR:MLONG 2010/06/05 REV D7	QUALITY SYMBOLS	GENERAL TOLERANCES (UNLESS SPECIFIED)		DIMENSION STYLE		SCALE	DESIGN UNITS	THIRD ANGLE PROJECTION	
	$\nabla_A = 0$ $\nabla_C = 0$ $\nabla_P = 0$	mm	INCH	MM ONLY		NTS	METRIC		
		4 PLACES ± --- ± ---		DRAWN BY	DATE	TITLE			
		3 PLACES ± --- ± ---		KCHO	2004/11/05	2.54MM PITCH DUAL ROW HEADER SINGLE WAFER, T/H			
	2 PLACES ± 0.20 ± ---		CHECKED BY	DATE	MOLEX MOLEX INCORPORATED MATERIAL NO. DOCUMENT NO. SD-87914-013				
	1 PLACE ± --- ± ---		PTLIM	2004/12/08					
	ANGULAR ± 3 °		APPROVED BY	DATE	SHEET NO. 1 OF 46 THIS DRAWING CONTAINS INFORMATION THAT IS PROPRIETARY TO MOLEX INCORPORATED AND SHOULD NOT BE USED WITHOUT WRITTEN PERMISSION				
			SCLOW	2004/12/10					
	DRAFT WHERE APPLICABLE MUST REMAIN WITHIN DIMENSIONS		SIZE	SEE TABLE					

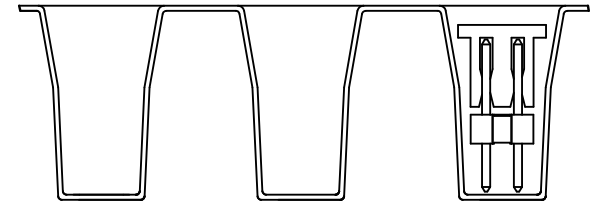
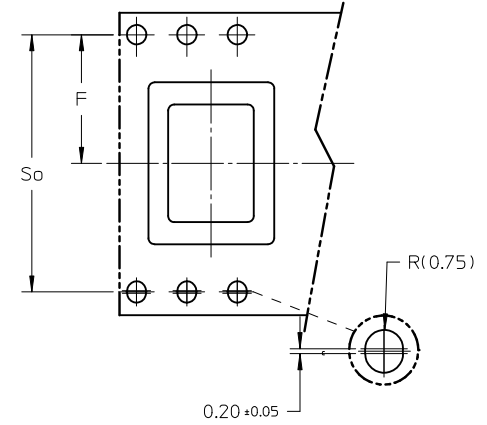
P/N	CKT SIZE	F	So	W	QTY/ REEL
87914-0627	06	11.50	-	24.00	250
87914-0827	08	11.50	-	24.00	250

FOR TAPE WIDTH WITH SINGLE ROW SPROCKET HOLES.



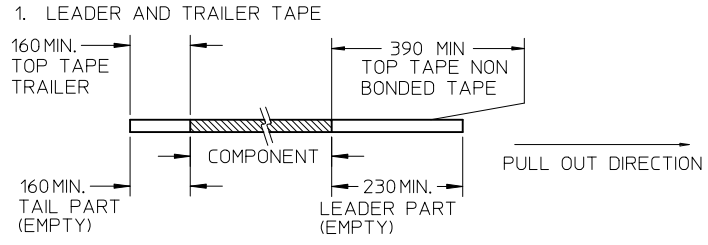
CUSTOMER
PULL OUT DIRECTION

FOR TAPE WIDTH WITH 2 ROWS OF SPROCKET HOLES.

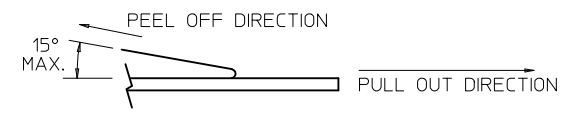


VIEW OF PART ORIENTATION
IN TAPE & REEL

NOTES:



2. PEELING OFF FORCE OF THE TOP TAPE: 20 - 80gf.
(PEELING DIRECTION AS SHOWN IN FOLLOWING FIGURE)



3. TAPE AND REEL SPECIFICATION IS AS PER EIA-481.
4. THE TAPE IS TREATED FOR ANTI-STATIC.

REV	DESCRIPTION	QUALITY SYMBOLS	GENERAL TOLERANCES (UNLESS SPECIFIED)		DIMENSION STYLE	SCALE	DESIGN UNITS	THIRD ANGLE PROJECTION
			mm	INCH	MM ONLY	NTS	METRIC	⊙ □
D7	PG8. +879140108 EC NO: S2010-0695 DRW: NAI SEE CHKD: PTLIM APPR: MLONG	$F_A=0$ $F_C=0$ $F_P=0$	4 PLACES ± --- ± --- 3 PLACES ± --- ± --- 2 PLACES ± 0.20 ± --- 1 PLACE ± --- ± ---	DRAWN BY: KCHO CHECKED BY: PTLIM APPROVED BY: SCLOW	DATE: 2004/11/05 DATE: 2004/12/08 DATE: 2004/12/10	TITLE	2.54MM PITCH DUAL ROW HEADER SINGLE WAFER, T/H	MOLEX INCORPORATED SD-87914-013
DRAFT WHERE APPLICABLE MUST REMAIN WITHIN DIMENSIONS			SEE TABLE		MATERIAL NO. DOCUMENT NO.		SHEET NO.	
			SIZE: A3		THIS DRAWING CONTAINS INFORMATION THAT IS PROPRIETARY TO MOLEX INCORPORATED AND SHOULD NOT BE USED WITHOUT WRITTEN PERMISSION			

PART NO FOR TRAY PACKAGING	PART NO. FOR TUBE WITHOUT CAP PACKAGING	PART NO. FOR TUBE WITH CAP PACKAGING	PART NO. FOR TAPE & REEL WITHOUT CAP PACKAGING	PART NO. FOR TAPE & REEL WITH CAP PACKAGING	CKT SIZE	VOID POSITION	PLATING TYPE	DIMENSION				
								A	B	F	M	P
								F	87914-0211	-----	-----	-----
	87914-0221	-----	-----	-----	2	----	1	2.54	----	12.25	7.00	2.96
	87914-0231	-----	-----	-----	2	----	1	2.54	----	13.38	6.09	5.00
	87914-0212	-----	-----	-----	2	----	2	2.54	----	10.92	5.84	2.79
	87914-0222	-----	-----	-----	2	----	2	2.54	----	12.25	7.00	2.96
	87914-0232	-----	-----	-----	2	----	2	2.54	----	13.38	6.09	5.00
E	87914-0213	-----	-----	-----	2	----	3	2.54	----	10.92	5.84	2.79
	87914-0223	-----	-----	-----	2	----	3	2.54	----	12.25	7.00	2.96
	87914-0233	-----	-----	-----	2	----	3	2.54	----	13.38	6.09	5.00
	87914-0214	-----	-----	-----	2	----	4	2.54	----	10.92	5.84	2.79
	87914-0224	-----	-----	-----	2	----	4	2.54	----	12.25	7.00	2.96
	87914-0234	-----	-----	-----	2	----	4	2.54	----	13.38	6.09	5.00
D	87914-0215	-----	-----	-----	2	----	5	2.54	----	10.92	5.84	2.79
	87914-0225	-----	-----	-----	2	----	5	2.54	----	12.25	7.00	2.96
	87914-0235	-----	-----	-----	2	----	5	2.54	----	13.38	6.09	5.00
	87914-0216	-----	-----	-----	2	----	6	2.54	----	10.92	5.84	2.79
	87914-0226	-----	-----	-----	2	----	6	2.54	----	12.25	7.00	2.96
	87914-0236	-----	-----	-----	2	----	6	2.54	----	13.38	6.09	5.00
C												
B												

PG8. +879140108 EC NO: S2010-0695 DRWN:ATSEE 2010/02/11 CHKD:PTLIM 2004/12/08 APPR:MLONG 2010/06/05 D7	QUALITY SYMBOLS $F_A=0$ $F_G=0$ $F_P=0$	GENERAL TOLERANCES (UNLESS SPECIFIED)		DIMENSION STYLE MM ONLY		SCALE NTS	DESIGN UNITS METRIC	THIRD ANGLE PROJECTION		
				DRAWN BY KCHO	DATE 2004/11/05	TITLE 2.54MM PITCH DUAL ROW HEADER SINGLE WAFER, T/H				
				CHECKED BY PTLIM	DATE 2004/12/08	APPROVED BY SCLOW				
				MATERIAL NO. SEE TABLE		DATE 2004/12/10	DOCUMENT NO. SD-87914-013		SHEET NO. 3 OF 46	
		DRAFT WHERE APPLICABLE MUST REMAIN WITHIN DIMENSIONS		THIS DRAWING CONTAINS INFORMATION THAT IS PROPRIETARY TO MOLEX INCORPORATED AND SHOULD NOT BE USED WITHOUT WRITTEN PERMISSION						

	10	9	8	7	6	5	4	3	2	1			
	PART NO FOR TRAY PACKAGING	PART NO. FOR TUBE WITHOUT CAP PACKAGING	PART NO. FOR TUBE WITH CAP PACKAGING	PART NO. FOR TAPE & REEL WITHOUT CAP PACKAGING	PART NO. FOR TAPE & REEL WITH CAP PACKAGING	CKT SIZE	VOID POSITION	PLATING TYPE	DIMENSION				
								A	B	F	M	P	
F	87914-0009	-----	-----	-----	-----	6	-----	1	7.62	5.08	18.84	13.25	3.30
	87914-0642	-----	-----	-----	-----	6	-----	2	7.62	5.08	18.84	13.25	3.30
	87914-0643	-----	-----	-----	-----	6	-----	3	7.62	5.08	18.84	13.25	3.30
	87914-0644	-----	-----	-----	-----	6	-----	4	7.62	5.08	18.84	13.25	3.30
	87914-0645	-----	-----	-----	-----	6	-----	5	7.62	5.08	18.84	13.25	3.30
	87914-0646	-----	-----	-----	-----	6	-----	6	7.62	5.08	18.84	13.25	3.30
E													
D													
C													

PG8. +879140108 EC NO: S2010-0695 DRWN:ATSEE 2010/02/11 CHKD:PTLIM 2004/12/08 APPR:MLONG 2010/06/05	QUALITY SYMBOLS	GENERAL TOLERANCES (UNLESS SPECIFIED)	DIMENSION STYLE	SCALE	DESIGN UNITS	THIRD ANGLE PROJECTION																		
	$\nabla_A = 0$ $\nabla_C = 0$ $\nabla_P = 0$	<table border="1"> <tr> <th></th> <th>mm</th> <th>INCH</th> </tr> <tr> <td>4 PLACES</td> <td>± ---</td> <td>± ---</td> </tr> <tr> <td>3 PLACES</td> <td>± ---</td> <td>± ---</td> </tr> <tr> <td>2 PLACES</td> <td>± 0.20</td> <td>± ---</td> </tr> <tr> <td>1 PLACE</td> <td>± ---</td> <td>± ---</td> </tr> </table>		mm	INCH	4 PLACES	± ---	± ---	3 PLACES	± ---	± ---	2 PLACES	± 0.20	± ---	1 PLACE	± ---	± ---	MM ONLY	NTS	METRIC				
		mm	INCH																					
	4 PLACES	± ---	± ---																					
3 PLACES	± ---	± ---																						
2 PLACES	± 0.20	± ---																						
1 PLACE	± ---	± ---																						
DESCRIPTION	<table border="1"> <tr> <th>DRAWN BY</th> <th>DATE</th> <th>TITLE</th> </tr> <tr> <td>KCHO</td> <td>2004/11/05</td> <td rowspan="3">2.54MM PITCH DUAL ROW HEADER SINGLE WAFER, T/H</td> </tr> <tr> <th>CHECKED BY</th> <th>DATE</th> </tr> <tr> <td>PTLIM</td> <td>2004/12/08</td> </tr> <tr> <th>APPROVED BY</th> <th>DATE</th> <td>MOLEX INCORPORATED</td> </tr> <tr> <td>SCLOW</td> <td>2004/12/10</td> <td></td> </tr> </table>	DRAWN BY	DATE	TITLE	KCHO	2004/11/05	2.54MM PITCH DUAL ROW HEADER SINGLE WAFER, T/H	CHECKED BY	DATE	PTLIM	2004/12/08	APPROVED BY	DATE	MOLEX INCORPORATED	SCLOW	2004/12/10		<table border="1"> <tr> <th>MATERIAL NO.</th> <th>DOCUMENT NO.</th> <th>SHEET NO.</th> </tr> <tr> <td>SEE TABLE</td> <td>SD-87914-013</td> <td>6 OF 46</td> </tr> </table>	MATERIAL NO.	DOCUMENT NO.	SHEET NO.	SEE TABLE	SD-87914-013	6 OF 46
DRAWN BY	DATE	TITLE																						
KCHO	2004/11/05	2.54MM PITCH DUAL ROW HEADER SINGLE WAFER, T/H																						
CHECKED BY	DATE																							
PTLIM	2004/12/08																							
APPROVED BY	DATE	MOLEX INCORPORATED																						
SCLOW	2004/12/10																							
MATERIAL NO.	DOCUMENT NO.	SHEET NO.																						
SEE TABLE	SD-87914-013	6 OF 46																						
REV	D7	DRAFT WHERE APPLICABLE MUST REMAIN WITHIN DIMENSIONS	THIS DRAWING CONTAINS INFORMATION THAT IS PROPRIETARY TO MOLEX INCORPORATED AND SHOULD NOT BE USED WITHOUT WRITTEN PERMISSION																					

	10	9	8	7	6	5	4	3	2	1				
	PART NO. FOR TRAY PACKAGING	PART NO. FOR TUBE WITHOUT CAP PACKAGING	PART NO. FOR TUBE WITH CAP PACKAGING	PART NO. FOR TAPE & REEL WITHOUT CAP PACKAGING	PART NO. FOR TAPE & REEL WITH CAP PACKAGING	CKT SIZE	VOID POSITION	PLATING TYPE	DIMENSION					
									A	B	F	M	P	G
F	87914-0811	-----	-----	-----	-----	8	-----	1	10.16	7.62	10.92	5.84	2.79	----
	87914-0821	-----	-----	-----	-----	8	-----	1	10.16	7.62	12.25	7.00	2.96	----
	87914-0831	-----	-----	-----	-----	8	-----	1	10.16	7.62	13.38	6.09	5.00	----
	87914-0812	-----	-----	-----	-----	8	-----	2	10.16	7.62	10.92	5.84	2.79	----
	87914-0822	-----	-----	-----	-----	8	-----	2	10.16	7.62	12.25	7.00	2.96	----
	87914-0832	-----	-----	-----	-----	8	-----	2	10.16	7.62	13.38	6.09	5.00	----
E	87914-0813	-----	-----	-----	-----	8	-----	3	10.16	7.62	10.92	5.84	2.79	----
	87914-0823	-----	-----	-----	-----	8	-----	3	10.16	7.62	12.25	7.00	2.96	----
	87914-0833	-----	-----	-----	-----	8	-----	4	10.16	7.62	13.38	6.09	5.00	----
	87914-0814	-----	-----	-----	-----	8	-----	4	10.16	7.62	10.92	5.84	2.79	----
	87914-0824	-----	-----	-----	-----	8	-----	4	10.16	7.62	12.25	7.00	2.96	----
	87914-0834	-----	-----	-----	-----	8	-----	4	10.16	7.62	13.38	6.09	5.00	----
D	87914-0815	-----	-----	-----	-----	8	-----	5	10.16	7.62	10.92	5.84	2.79	----
	87914-0825	-----	-----	-----	-----	8	-----	5	10.16	7.62	12.25	7.00	2.96	----
	87914-0835	-----	-----	-----	-----	8	-----	5	10.16	7.62	13.38	6.09	5.00	----
	87914-0816	-----	-----	-----	-----	8	-----	6	10.16	7.62	10.92	5.84	2.79	----
	87914-0826	-----	-----	-----	-----	8	-----	6	10.16	7.62	12.25	7.00	2.96	----
	87914-0836	-----	-----	-----	-----	8	-----	6	10.16	7.62	13.38	6.09	5.00	----
C	87914-0807	-----	-----	-----	-----	8	2,3,4,5,6,8	6	10.16	7.62	21.75	16.51	2.95	----
	-----	-----	-----	-----	87914-0827	8	-----	6	10.16	7.62	13.55	8.08	3.18	14.70

B

PG8. +879140108 EC NO: S2010-0695 DRWN:ATSEE 2010/02/11 CHKD:PTLIM 2004/12/08 APPR:MLONG 2010/06/05	QUALITY SYMBOLS	$\nabla_A = 0$ $\nabla_C = 0$ $\nabla_P = 0$	GENERAL TOLERANCES (UNLESS SPECIFIED)	DIMENSION STYLE MM ONLY	SCALE NTS	DESIGN UNITS METRIC	THIRD ANGLE PROJECTION	
			4 PLACES ± --- ± --- 3 PLACES ± --- ± --- 2 PLACES ± 0.20 ± --- 1 PLACE ± --- ± ---	mm INCH	DRAWN BY DATE KCHO 2004/11/05	2.54MM PITCH DUAL ROW HEADER SINGLE WAFER, T/H		
			ANGULAR ± 3 °	CHECKED BY DATE PTLIM 2004/12/08	APPROVED BY DATE SCLOW 2004/12/10			
	D7			DRAFT WHERE APPLICABLE MUST REMAIN WITHIN DIMENSIONS	MATERIAL NO. SEE TABLE	DOCUMENT NO. SD-87914-013	SHEET NO. 7 OF 46	
THIS DRAWING CONTAINS INFORMATION THAT IS PROPRIETARY TO MOLEX INCORPORATED AND SHOULD NOT BE USED WITHOUT WRITTEN PERMISSION								

F	10		9		8		7		6		5		4		3		2		1	
	PART NO FOR TRAY PACKAGING	PART NO. FOR TUBE WITHOUT CAP PACKAGING	PART NO. FOR TUBE WITH CAP PACKAGING	PART NO. FOR TAPE & REEL WITHOUT CAP PACKAGING	PART NO. FOR TAPE & REEL WITH CAP PACKAGING	PART NO. FOR BULK PACKAGING	CKT SIZE	VOID POSITION	PLATING TYPE	DIMENSION										
										A	B	F	M	P	G					
	87914-1011	-----	-----	-----	-----	-----	10	----	1	12.70	10.16	10.92	5.84	2.79	----					
	87914-1021	-----	-----	-----	-----	-----	10	----	1	12.70	10.16	12.25	7.00	2.96	----					
	87914-1031	-----	-----	-----	-----	-----	10	----	1	12.70	10.16	13.38	6.09	5.00	----					
	87914-1012	-----	-----	-----	-----	-----	10	----	2	12.70	10.16	10.92	5.84	2.79	----					
	87914-1022	-----	-----	-----	-----	-----	10	----	2	12.70	10.16	12.25	7.00	2.96	----					
	87914-1032	-----	-----	-----	-----	-----	10	----	2	12.70	10.16	13.38	6.09	5.00	----					
E	87914-1013	-----	-----	-----	-----	-----	10	----	3	12.70	10.16	10.92	5.84	2.79	----					
	87914-1023	-----	-----	-----	-----	-----	10	----	3	12.70	10.16	12.25	7.00	2.96	----					
	87914-1033	-----	-----	-----	-----	-----	10	----	3	12.70	10.16	13.38	6.09	5.00	----					
	87914-1014	-----	-----	-----	-----	-----	10	----	4	12.70	10.16	10.92	5.84	2.79	----					
	87914-1024	-----	-----	-----	-----	-----	10	----	4	12.70	10.16	12.25	7.00	2.96	----					
	87914-1034	-----	-----	-----	-----	-----	10	----	4	12.70	10.16	13.38	6.09	5.00	----					
D	87914-1015	-----	-----	-----	-----	-----	10	----	5	12.70	10.16	10.92	5.84	2.79	----					
	87914-1025	-----	-----	-----	-----	-----	10	----	5	12.70	10.16	12.25	7.00	2.96	----					
	87914-1035	-----	-----	-----	-----	-----	10	----	5	12.70	10.16	13.38	6.09	5.00	----					
	87914-1016	-----	-----	-----	-----	-----	10	----	6	12.70	10.16	10.92	5.84	2.79	----					
	87914-1026	-----	-----	-----	-----	-----	10	----	6	12.70	10.16	12.25	7.00	2.96	----					
	87914-1036	-----	-----	-----	-----	-----	10	----	6	12.70	10.16	13.38	6.09	5.00	----					
C	87914-0001	-----	-----	-----	-----	-----	10	----	7	12.70	10.16	12.07	5.97	3.81	----					
	-----	-----	-----	-----	-----	87914-1037	10	9	4	12.70	10.16	10.92	5.84	2.79	----					
B																				

PG8, +879140108 EC NO: S2010-0695 DRW:ATSEE 2010/02/11 CHKD:PTLIM 2004/12/08 APPR:MLONG 2010/06/05	QUALITY SYMBOLS $F_A=0$ $F_G=0$ $F_P=0$	GENERAL TOLERANCES (UNLESS SPECIFIED)		DIMENSION STYLE MM ONLY		SCALE NTS	DESIGN UNITS METRIC	THIRD ANGLE PROJECTION			
		4 PLACES \pm --- \pm --- 3 PLACES \pm --- \pm --- 2 PLACES ± 0.20 \pm --- 1 PLACE \pm --- \pm ---	mm INCH	DRAWN BY KCHO	DATE 2004/11/05	TITLE 2.54MM PITCH DUAL ROW HEADER SINGLE WAFER, T/H					
		ANGULAR $\pm 3^\circ$		CHECKED BY PTLIM	DATE 2004/12/08	MOLEX INCORPORATED					
		DRAFT WHERE APPLICABLE MUST REMAIN WITHIN DIMENSIONS		APPROVED BY SCLOW	DATE 2004/12/10	MATERIAL NO. SEE TABLE	DOCUMENT NO. SD-87914-013	SHEET NO. 9 OF 46			

PART NO FOR TRAY PACKAGING	PART NO. FOR TUBE WITHOUT CAP PACKAGING	PART NO. FOR TUBE WITH CAP PACKAGING	PART NO. FOR TAPE & REEL WITHOUT CAP PACKAGING	PART NO. FOR TAPE & REEL WITH CAP PACKAGING	CKT SIZE	VOID POSITION	PLATING TYPE	DIMENSION				
								A	B	F	M	P
F	87914-1211	-----	-----	-----	12	----	1	15.24	12.70	10.92	5.84	2.79
	87914-1221	-----	-----	-----	12	----	1	15.24	12.70	12.25	7.00	2.96
	87914-1231	-----	-----	-----	12	----	1	15.24	12.70	13.38	6.09	5.00
	87914-1212	-----	-----	-----	12	----	2	15.24	12.70	10.92	5.84	2.79
	87914-1222	-----	-----	-----	12	----	2	15.24	12.70	12.25	7.00	2.96
	87914-1232	-----	-----	-----	12	----	2	15.24	12.70	13.38	6.09	5.00
E	87914-1213	-----	-----	-----	12	----	3	15.24	12.70	10.92	5.84	2.79
	87914-1223	-----	-----	-----	12	----	3	15.24	12.70	12.25	7.00	2.96
	87914-1233	-----	-----	-----	12	----	3	15.24	12.70	13.38	6.09	5.00
	87914-1214	-----	-----	-----	12	----	4	15.24	12.70	10.92	5.84	2.79
	87914-1224	-----	-----	-----	12	----	4	15.24	12.70	12.25	7.00	2.96
	87914-1234	-----	-----	-----	12	----	4	15.24	12.70	13.38	6.09	5.00
D	87914-1215	-----	-----	-----	12	----	5	15.24	12.70	10.92	5.84	2.79
	87914-1225	-----	-----	-----	12	----	5	15.24	12.70	12.25	7.00	2.96
	87914-1235	-----	-----	-----	12	----	5	15.24	12.70	13.38	6.09	5.00
	87914-1216	-----	-----	-----	12	----	6	15.24	12.70	10.92	5.84	2.79
	87914-1226	-----	-----	-----	12	----	6	15.24	12.70	12.25	7.00	2.96
	87914-1236	-----	-----	-----	12	----	6	15.24	12.70	13.38	6.09	5.00

C

B

PG8. +879140108 EC NO: S2010-0695 DRWN:ATSEE 2010/02/11 CHKD:PTLIM 2004/12/08 APPR:MLONG 2010/06/05	DESCRIPTION REV D7	QUALITY SYMBOLS	GENERAL TOLERANCES (UNLESS SPECIFIED)	DIMENSION STYLE	SCALE	DESIGN UNITS	THIRD ANGLE PROJECTION
		$\nabla_A = 0$ $\nabla_C = 0$ $\nabla_P = 0$	mm INCH 4 PLACES ± --- ± --- 3 PLACES ± --- ± --- 2 PLACES ± 0.20 ± --- 1 PLACE ± --- ± --- ANGULAR ± 3 °	MM ONLY DRAWN BY: KCHO DATE: 2004/11/05 CHECKED BY: PTLIM DATE: 2004/12/08 APPROVED BY: SCLOW DATE: 2004/12/10	NTS TITLE:	METRIC 2.54MM PITCH DUAL ROW HEADER SINGLE WAFER, T/H	
		DRAFT WHERE APPLICABLE MUST REMAIN WITHIN DIMENSIONS	SEE TABLE	MOLEX INCORPORATED MATERIAL NO. DOCUMENT NO.	SD-87914-013 SHEET NO.		
		SIZE A3 THIS DRAWING CONTAINS INFORMATION THAT IS PROPRIETARY TO MOLEX INCORPORATED AND SHOULD NOT BE USED WITHOUT WRITTEN PERMISSION	10 OF 46				

	10	9	8	7	6	5	4	3	2	1			
	PART NO FOR TRAY PACKAGING	PART NO. FOR TUBE WITHOUT CAP PACKAGING	PART NO. FOR TUBE WITH CAP PACKAGING	PART NO. FOR TAPE & REEL WITHOUT CAP PACKAGING	PART NO. FOR TAPE & REEL WITH CAP PACKAGING	CKT SIZE	VOID POSITION	PLATING TYPE	DIMENSION				
								A	B	F	M	P	
F	87914-1411	-----	-----	-----	-----	14	----	1	17.78	15.24	10.92	5.84	2.79
	87914-1421	-----	-----	-----	-----	14	----	1	17.78	15.24	12.25	7.00	2.96
	87914-1431	-----	-----	-----	-----	14	----	1	17.78	15.24	13.38	6.09	5.00
	87914-1412	-----	-----	-----	-----	14	----	2	17.78	15.24	10.92	5.84	2.79
	87914-1422	-----	-----	-----	-----	14	----	2	17.78	15.24	12.25	7.00	2.96
	87914-1432	-----	-----	-----	-----	14	----	2	17.78	15.24	13.38	6.09	5.00
E	87914-1413	-----	-----	-----	-----	14	----	3	17.78	15.24	10.92	5.84	2.79
	87914-1423	-----	-----	-----	-----	14	----	3	17.78	15.24	12.25	7.00	2.96
	87914-1433	-----	-----	-----	-----	14	----	3	17.78	15.24	13.38	6.09	5.00
	87914-1414	-----	-----	-----	-----	14	----	4	17.78	15.24	10.92	5.84	2.79
	87914-1424	-----	-----	-----	-----	14	----	4	17.78	15.24	12.25	7.00	2.96
	87914-1434	-----	-----	-----	-----	14	----	4	17.78	15.24	13.38	6.09	5.00
D	87914-1415	-----	-----	-----	-----	14	----	5	17.78	15.24	10.92	5.84	2.79
	87914-1425	-----	-----	-----	-----	14	----	5	17.78	15.24	12.25	7.00	2.96
	87914-1435	-----	-----	-----	-----	14	----	5	17.78	15.24	13.38	6.09	5.00
	87914-1416	-----	-----	-----	-----	14	----	6	17.78	15.24	10.92	5.84	2.79
	87914-1426	-----	-----	-----	-----	14	----	6	17.78	15.24	12.25	7.00	2.96
	87914-1436	-----	-----	-----	-----	14	----	6	17.78	15.24	13.38	6.09	5.00
C	87914-0007	-----	-----	-----	-----	14	----	6	17.78	15.24	13.42	8.08	3.05

B

PG8. +879140108 EC NO: S2010-0695 DRWN:ATSEE 2010/02/11 CHKD:PTLIM 2004/12/08 APPR:MLONG 2010/06/05 D7	QUALITY SYMBOLS $F_A=0$ $F_G=0$ $F_P=0$	GENERAL TOLERANCES (UNLESS SPECIFIED) mm INCH 4 PLACES ± --- ± --- 3 PLACES ± --- ± --- 2 PLACES ± 0.20 ± --- 1 PLACE ± --- ± --- ANGULAR ± 3 °	DIMENSION STYLE MM ONLY DRAWN BY: KCHO DATE: 2004/11/05 CHECKED BY: PTLIM DATE: 2004/12/08 APPROVED BY: SCLOW DATE: 2004/12/10	SCALE: NTS DESIGN UNITS: METRIC THIRD ANGLE PROJECTION	TITLE: 2.54MM PITCH DUAL ROW HEADER SINGLE WAFER, T/H MOLEX INCORPORATED MATERIAL NO. DOCUMENT NO. SD-87914-013 SHEET NO. 12 OF 46	
	DRAFT WHERE APPLICABLE MUST REMAIN WITHIN DIMENSIONS		SEE TABLE	THIS DRAWING CONTAINS INFORMATION THAT IS PROPRIETARY TO MOLEX INCORPORATED AND SHOULD NOT BE USED WITHOUT WRITTEN PERMISSION		
			SIZE: A3			

PART NO FOR TRAY PACKAGING	PART NO. FOR TUBE WITHOUT CAP PACKAGING	PART NO. FOR TUBE WITH CAP PACKAGING	PART NO. FOR TAPE & REEL WITHOUT CAP PACKAGING	PART NO. FOR TAPE & REEL WITH CAP PACKAGING	CKT SIZE	VOID POSITION	PLATING TYPE	DIMENSION				
								A	B	F	M	P
								F	87914-2211	-----	-----	-----
	87914-2221	-----	-----	-----	22	----	1	27.94	25.40	12.25	7.00	2.96
	87914-2231	-----	-----	-----	22	----	1	27.94	25.40	13.38	6.09	5.00
	87914-2212	-----	-----	-----	22	----	2	27.94	25.40	10.92	5.84	2.79
	87914-2222	-----	-----	-----	22	----	2	27.94	25.40	12.25	7.00	2.96
	87914-2232	-----	-----	-----	22	----	2	27.94	25.40	13.38	6.09	5.00
E	87914-2213	-----	-----	-----	22	----	3	27.94	25.40	10.92	5.84	2.79
	87914-2223	-----	-----	-----	22	----	3	27.94	25.40	12.25	7.00	2.96
	87914-2233	-----	-----	-----	22	----	3	27.94	25.40	13.38	6.09	5.00
	87914-2214	-----	-----	-----	22	----	4	27.94	25.40	10.92	5.84	2.79
	87914-2224	-----	-----	-----	22	----	4	27.94	25.40	12.25	7.00	2.96
	87914-2234	-----	-----	-----	22	----	4	27.94	25.40	13.38	6.09	5.00
D	87914-2215	-----	-----	-----	22	----	5	27.94	25.40	10.92	5.84	2.79
	87914-2225	-----	-----	-----	22	----	5	27.94	25.40	12.25	7.00	2.96
	87914-2235	-----	-----	-----	22	----	5	27.94	25.40	13.38	6.09	5.00
	87914-2216	-----	-----	-----	22	----	6	27.94	25.40	10.92	5.84	2.79
	87914-2226	-----	-----	-----	22	----	6	27.94	25.40	12.25	7.00	2.96
	87914-2236	-----	-----	-----	22	----	6	27.94	25.40	13.38	6.09	5.00
C												
B												

PG8. +879140108 EC NO: S2010-0695 DRWN:ATSEE 2010/02/11 CHKD:PTLIM 2004/12/08 APPR:MLONG 2010/06/05 D7	QUALITY SYMBOLS $F_A=0$ $F_G=0$ $F_P=0$	GENERAL TOLERANCES (UNLESS SPECIFIED)		DIMENSION STYLE MM ONLY		SCALE NTS	DESIGN UNITS METRIC	THIRD ANGLE PROJECTION	
		4 PLACES \pm --- \pm --- 3 PLACES \pm --- \pm --- 2 PLACES ± 0.20 \pm --- 1 PLACE \pm --- \pm ---	mm INCH	DRAWN BY KCHO	DATE 2004/11/05	TITLE 2.54MM PITCH DUAL ROW HEADER SINGLE WAFER, T/H			
		ANGULAR $\pm 3^\circ$		CHECKED BY PTLIM	DATE 2004/12/08	MOLEX INCORPORATED			
		DRAFT WHERE APPLICABLE MUST REMAIN WITHIN DIMENSIONS		APPROVED BY SCLOW	DATE 2004/12/10	MATERIAL NO. SEE TABLE	DOCUMENT NO. SD-87914-013	SHEET NO. 17 OF 46	

F	10													9													8													7													6													5													4													3													2													1												
	PART NO FOR TRAY PACKAGING	PART NO. FOR TUBE WITHOUT CAP PACKAGING	PART NO. FOR TUBE WITH CAP PACKAGING	PART NO. FOR TAPE & REEL WITHOUT CAP PACKAGING	PART NO. FOR TAPE & REEL WITH CAP PACKAGING	CKT SIZE	VOID POSITION	PLATING TYPE	DIMENSION																																																																																																																									
									A	B	F	M	P																																																																																																																					
	87914-2411	-----	-----	-----	-----	24	-----	1	30.48	27.94	10.92	5.84	2.79																																																																																																																					
	87914-2421	-----	-----	-----	-----	24	-----	1	30.48	27.94	12.25	7.00	2.96																																																																																																																					
	87914-2431	-----	-----	-----	-----	24	-----	1	30.48	27.94	13.38	6.09	5.00																																																																																																																					
	87914-2412	-----	-----	-----	-----	24	-----	2	30.48	27.94	10.92	5.84	2.79																																																																																																																					
	87914-2422	-----	-----	-----	-----	24	-----	2	30.48	27.94	12.25	7.00	2.96																																																																																																																					
	87914-2432	-----	-----	-----	-----	24	-----	2	30.48	27.94	13.38	6.09	5.00																																																																																																																					
E	87914-2413	-----	-----	-----	-----	24	-----	3	30.48	27.94	10.92	5.84	2.79																																																																																																																					
	87914-2423	-----	-----	-----	-----	24	-----	3	30.48	27.94	12.25	7.00	2.96																																																																																																																					
	87914-2433	-----	-----	-----	-----	24	-----	3	30.48	27.94	13.38	6.09	5.00																																																																																																																					
	87914-2414	-----	-----	-----	-----	24	-----	4	30.48	27.94	10.92	5.84	2.79																																																																																																																					
	87914-2424	-----	-----	-----	-----	24	-----	4	30.48	27.94	12.25	7.00	2.96																																																																																																																					
	87914-2434	-----	-----	-----	-----	24	-----	4	30.48	27.94	13.38	6.09	5.00																																																																																																																					
D	87914-2415	-----	-----	-----	-----	24	-----	5	30.48	27.94	10.92	5.84	2.79																																																																																																																					
	87914-2425	-----	-----	-----	-----	24	-----	5	30.48	27.94	12.25	7.00	2.96																																																																																																																					
	87914-2435	-----	-----	-----	-----	24	-----	5	30.48	27.94	13.38	6.09	5.00																																																																																																																					
	87914-2416	-----	-----	-----	-----	24	-----	6	30.48	27.94	10.92	5.84	2.79																																																																																																																					
	87914-2426	-----	-----	-----	-----	24	-----	6	30.48	27.94	12.25	7.00	2.96																																																																																																																					
	87914-2436	-----	-----	-----	-----	24	-----	6	30.48	27.94	13.38	6.09	5.00																																																																																																																					
C																																																																																																																																		
B																																																																																																																																		

PG8. +879140108 EC NO: S2010-0695 DRWN:ATSEE 2010/02/11 CHKD:PTLIM 2004/12/08 APPR:MLONG 2010/06/05 D7	QUALITY SYMBOLS $F_A=0$ $F_G=0$ $F_P=0$	GENERAL TOLERANCES (UNLESS SPECIFIED) mm INCH		DIMENSION STYLE MM ONLY		SCALE NTS	DESIGN UNITS METRIC	THIRD ANGLE PROJECTION	
		4 PLACES ± --- ± ---	3 PLACES ± --- ± ---	DRAWN BY KCHO	DATE 2004/11/05	TITLE 2.54MM PITCH DUAL ROW HEADER SINGLE WAFER, T/H			
		2 PLACES ± 0.20 ± ---	1 PLACE ± --- ± ---	CHECKED BY PTLIM	DATE 2004/12/08	MOLEX INCORPORATED			
		ANGULAR ± 3 °		APPROVED BY SCLOW	DATE 2004/12/10	MATERIAL NO. SEE TABLE	DOCUMENT NO. SD-87914-013	SHEET NO. 18 OF 46	
DRAFT WHERE APPLICABLE MUST REMAIN WITHIN DIMENSIONS				THIS DRAWING CONTAINS INFORMATION THAT IS PROPRIETARY TO MOLEX INCORPORATED AND SHOULD NOT BE USED WITHOUT WRITTEN PERMISSION					

PART NO FOR TRAY PACKAGING	PART NO. FOR TUBE WITHOUT CAP PACKAGING	PART NO. FOR TUBE WITH CAP PACKAGING	PART NO. FOR TAPE & REEL WITHOUT CAP PACKAGING	PART NO. FOR TAPE & REEL WITH CAP PACKAGING	CKT SIZE	VOID POSITION	PLATING TYPE	DIMENSION				
								A	B	F	M	P
								F	87914-2611	-----	-----	-----
	87914-2621	-----	-----	-----	26	----	1	33.02	30.48	12.25	7.00	2.96
	87914-2631	-----	-----	-----	26	----	1	33.02	30.48	13.38	6.09	5.00
	87914-2612	-----	-----	-----	26	----	2	33.02	30.48	10.92	5.84	2.79
	87914-2622	-----	-----	-----	26	----	2	33.02	30.48	12.25	7.00	2.96
	87914-2632	-----	-----	-----	26	----	2	33.02	30.48	13.38	6.09	5.00
E	87914-2613	-----	-----	-----	26	----	3	33.02	30.48	10.92	5.84	2.79
	87914-2623	-----	-----	-----	26	----	3	33.02	30.48	12.25	7.00	2.96
	87914-2633	-----	-----	-----	26	----	3	33.02	30.48	13.38	6.09	5.00
	87914-2614	-----	-----	-----	26	----	4	33.02	30.48	10.92	5.84	2.79
	87914-2624	-----	-----	-----	26	----	4	33.02	30.48	12.25	7.00	2.96
	87914-2634	-----	-----	-----	26	----	4	33.02	30.48	13.38	6.09	5.00
D	87914-2615	-----	-----	-----	26	----	5	33.02	30.48	10.92	5.84	2.79
	87914-2625	-----	-----	-----	26	----	5	33.02	30.48	12.25	7.00	2.96
	87914-2635	-----	-----	-----	26	----	5	33.02	30.48	13.38	6.09	5.00
	87914-2616	-----	-----	-----	26	----	6	33.02	30.48	10.92	5.84	2.79
	87914-2626	-----	-----	-----	26	----	6	33.02	30.48	12.25	7.00	2.96
	87914-2636	-----	-----	-----	26	----	6	33.02	30.48	13.38	6.09	5.00
C												
B												

PG8. +879140108 EC NO: S2010-0695 DRWN:ATSEE 2010/02/11 CHKD:PTLIM 2004/12/08 APPR:MLONG 2010/06/05 D7	QUALITY SYMBOLS $F_A=0$ $F_G=0$ $F_P=0$	GENERAL TOLERANCES (UNLESS SPECIFIED)		DIMENSION STYLE MM ONLY		SCALE NTS	DESIGN UNITS METRIC	THIRD ANGLE PROJECTION	
		4 PLACES ± --- ± --- 3 PLACES ± --- ± --- 2 PLACES ± 0.20 ± --- 1 PLACE ± --- ± ---	mm INCH	DRAWN BY KCHO	DATE 2004/11/05	TITLE 2.54MM PITCH DUAL ROW HEADER SINGLE WAFER, T/H			
		ANGULAR ± 3 °		CHECKED BY PTLIM	DATE 2004/12/08	MOLEX INCORPORATED			
		DRAFT WHERE APPLICABLE MUST REMAIN WITHIN DIMENSIONS		APPROVED BY SCLOW	DATE 2004/12/10	MATERIAL NO. SEE TABLE	DOCUMENT NO. SD-87914-013	SHEET NO. 19 OF 46	

PART NO FOR TRAY PACKAGING	PART NO. FOR TUBE WITHOUT CAP PACKAGING	PART NO. FOR TUBE WITH CAP PACKAGING	PART NO. FOR TAPE & REEL WITHOUT CAP PACKAGING	PART NO. FOR TAPE & REEL WITH CAP PACKAGING	CKT SIZE	VOID POSITION	PLATING TYPE	DIMENSION				
								A	B	F	M	P
								F	87914-3011	-----	-----	-----
	87914-3021	-----	-----	-----	30	----	1	38.10	35.56	12.25	7.00	2.96
	87914-3031	-----	-----	-----	30	----	1	38.10	35.56	13.38	6.09	5.00
	87914-3012	-----	-----	-----	30	----	2	38.10	35.56	10.92	5.84	2.79
	87914-3022	-----	-----	-----	30	----	2	38.10	35.56	12.25	7.00	2.96
	87914-3032	-----	-----	-----	30	----	2	38.10	35.56	13.38	6.09	5.00
E	87914-3013	-----	-----	-----	30	----	3	38.10	35.56	10.92	5.84	2.79
	87914-3023	-----	-----	-----	30	----	3	38.10	35.56	12.25	7.00	2.96
	87914-3033	-----	-----	-----	30	----	3	38.10	35.56	13.38	6.09	5.00
	87914-3014	-----	-----	-----	30	----	4	38.10	35.56	10.92	5.84	2.79
	87914-3024	-----	-----	-----	30	----	4	38.10	35.56	12.25	7.00	2.96
	87914-3034	-----	-----	-----	30	----	4	38.10	35.56	13.38	6.09	5.00
D	87914-3015	-----	-----	-----	30	----	5	38.10	35.56	10.92	5.84	2.79
	87914-3025	-----	-----	-----	30	----	5	38.10	35.56	12.25	7.00	2.96
	87914-3035	-----	-----	-----	30	----	5	38.10	35.56	13.38	6.09	5.00
	87914-3016	-----	-----	-----	30	----	6	38.10	35.56	10.92	5.84	2.79
	87914-3026	-----	-----	-----	30	----	6	38.10	35.56	12.25	7.00	2.96
	87914-3036	-----	-----	-----	30	----	6	38.10	35.56	13.38	6.09	5.00
C												
B												

PG8. +879140108 EC NO: S2010-0695 DRWN:ATSEE 2010/02/11 CHKD:PTLIM 2004/12/08 APPR:MLONG 2010/06/05 D7	QUALITY SYMBOLS $F_A=0$ $F_G=0$ $F_P=0$	GENERAL TOLERANCES (UNLESS SPECIFIED) <table border="1"> <tr><th colspan="2">mm</th><th>INCH</th></tr> <tr><td>4 PLACES</td><td>± ---</td><td>± ---</td></tr> <tr><td>3 PLACES</td><td>± ---</td><td>± ---</td></tr> <tr><td>2 PLACES</td><td>± 0.20</td><td>± ---</td></tr> <tr><td>1 PLACE</td><td>± ---</td><td>± ---</td></tr> </table>	mm		INCH	4 PLACES	± ---	± ---	3 PLACES	± ---	± ---	2 PLACES	± 0.20	± ---	1 PLACE	± ---	± ---	DIMENSION STYLE MM ONLY DRAWN BY: KCHO DATE: 2004/11/05 CHECKED BY: PTLIM DATE: 2004/12/08 APPROVED BY: SCLOW DATE: 2004/12/10	SCALE: NTS DESIGN UNITS: METRIC THIRD ANGLE PROJECTION	TITLE: 2.54MM PITCH DUAL ROW HEADER SINGLE WAFER, T/H
	mm		INCH																	
	4 PLACES	± ---	± ---																	
	3 PLACES	± ---	± ---																	
2 PLACES	± 0.20	± ---																		
1 PLACE	± ---	± ---																		
DRAFT WHERE APPLICABLE MUST REMAIN WITHIN DIMENSIONS		MATERIAL NO.: SEE TABLE DOCUMENT NO.: SD-87914-013	SHEET NO.: 21 OF 46																	
SIZE: A3 THIS DRAWING CONTAINS INFORMATION THAT IS PROPRIETARY TO MOLEX INCORPORATED AND SHOULD NOT BE USED WITHOUT WRITTEN PERMISSION		MOLEX INCORPORATED																		

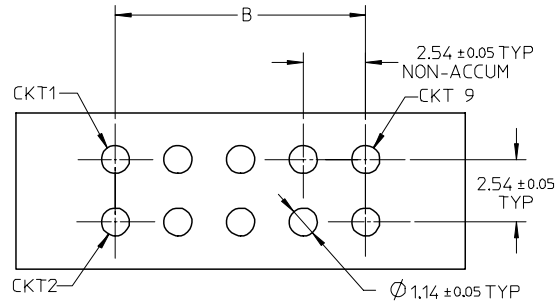
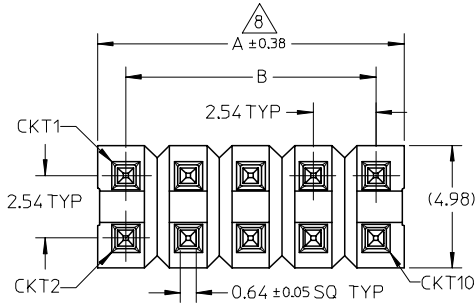
	10	9	8	7	6	5	4	3	2	1				
	PART NO. FOR TRAY PACKAGING	PART NO. FOR TUBE WITHOUT CAP PACKAGING	PART NO. FOR TUBE WITH CAP PACKAGING	PART NO. FOR TAPE & REEL WITHOUT CAP PACKAGING	PART NO. FOR TAPE & REEL WITH CAP PACKAGING	CKT SIZE	VOID POSITION	PLATING TYPE	DIMENSION					
								A	B	F	M	P		
F	87914-3611	-----	-----	-----	-----	36	----	1	45.72	43.18	10.92	5.84	2.79	F
	87914-3621	-----	-----	-----	-----	36	----	1	45.72	43.18	12.25	7.00	2.96	
	87914-3631	-----	-----	-----	-----	36	----	1	45.72	43.18	13.38	6.09	5.00	
	87914-3612	-----	-----	-----	-----	36	----	2	45.72	43.18	10.92	5.84	2.79	
	87914-3622	-----	-----	-----	-----	36	----	2	45.72	43.18	12.25	7.00	2.96	
	87914-3632	-----	-----	-----	-----	36	----	2	45.72	43.18	13.38	6.09	5.00	
E	87914-3613	-----	-----	-----	-----	36	----	3	45.72	43.18	10.92	5.84	2.79	E
	87914-3623	-----	-----	-----	-----	36	----	3	45.72	43.18	12.25	7.00	2.96	
	87914-3633	-----	-----	-----	-----	36	----	3	45.72	43.18	13.38	6.09	5.00	
	87914-3614	-----	-----	-----	-----	36	----	4	45.72	43.18	10.92	5.84	2.79	
	87914-3624	-----	-----	-----	-----	36	----	4	45.72	43.18	12.25	7.00	2.96	
	87914-3634	-----	-----	-----	-----	36	----	4	45.72	43.18	13.38	6.09	5.00	
D	87914-3615	-----	-----	-----	-----	36	----	5	45.72	43.18	10.92	5.84	2.79	D
	87914-3625	-----	-----	-----	-----	36	----	5	45.72	43.18	12.25	7.00	2.96	
	87914-3635	-----	-----	-----	-----	36	----	5	45.72	43.18	13.38	6.09	5.00	
	87914-3616	-----	-----	-----	-----	36	----	6	45.72	43.18	10.92	5.84	2.79	
	87914-3626	-----	-----	-----	-----	36	----	6	45.72	43.18	12.25	7.00	2.96	
	87914-3636	-----	-----	-----	-----	36	----	6	45.72	43.18	13.38	6.09	5.00	
C	87914-3637	-----	-----	-----	-----	36	----	6	45.72	43.18	12.10	7.21	2.60	C
B														B

PG8. +879140108 EC NO: S2010-0695 DRWN:ATSEE 2010/02/11 CHKD:PTLIM 2004/12/08 APPR:MLONG 2010/06/05 D7	QUALITY SYMBOLS $F_A=0$ $F_G=0$ $F_P=0$	GENERAL TOLERANCES (UNLESS SPECIFIED) <table border="1"> <tr><th colspan="2">mm</th><th>INCH</th></tr> <tr><td>4 PLACES</td><td>± ---</td><td>± ---</td></tr> <tr><td>3 PLACES</td><td>± ---</td><td>± ---</td></tr> <tr><td>2 PLACES</td><td>± 0.20</td><td>± ---</td></tr> <tr><td>1 PLACE</td><td>± ---</td><td>± ---</td></tr> </table>	mm		INCH	4 PLACES	± ---	± ---	3 PLACES	± ---	± ---	2 PLACES	± 0.20	± ---	1 PLACE	± ---	± ---	DIMENSION STYLE MM ONLY DRAWN BY: KCHO CHECKED BY: PTLIM APPROVED BY: SCLOW MATERIAL NO.	SCALE: NTS DESIGN UNITS: METRIC THIRD ANGLE PROJECTION	DATE: 2004/11/05 DATE: 2004/12/08 DATE: 2004/12/10	TITLE: 2.54MM PITCH DUAL ROW HEADER SINGLE WAFER, T/H MOLEX INCORPORATED	DOCUMENT NO.: SD-87914-013 SHEET NO.: 24 OF 46
	mm		INCH																			
	4 PLACES	± ---	± ---																			
	3 PLACES	± ---	± ---																			
2 PLACES	± 0.20	± ---																				
1 PLACE	± ---	± ---																				
DRAFT WHERE APPLICABLE MUST REMAIN WITHIN DIMENSIONS		SEE TABLE	THIS DRAWING CONTAINS INFORMATION THAT IS PROPRIETARY TO MOLEX INCORPORATED AND SHOULD NOT BE USED WITHOUT WRITTEN PERMISSION																			

F	10	9	8	7	6	5	4	3	2	1			
	PART NO FOR TRAY PACKAGING	PART NO. FOR TUBE WITHOUT CAP PACKAGING	PART NO. FOR TUBE WITH CAP PACKAGING	PART NO. FOR TAPE & REEL WITHOUT CAP PACKAGING	PART NO. FOR TAPE & REEL WITH CAP PACKAGING	CKT SIZE	VOID POSITION	PLATING TYPE	DIMENSION				
									A	B	F	M	P
	87914-3811	-----	-----	-----	-----	38	----	1	48.26	45.72	10.92	5.84	2.79
	87914-3821	-----	-----	-----	-----	38	----	1	48.26	45.72	12.25	7.00	2.96
	87914-3831	-----	-----	-----	-----	38	----	1	48.26	45.72	13.38	6.09	5.00
	87914-3812	-----	-----	-----	-----	38	----	2	48.26	45.72	10.92	5.84	2.79
	87914-3822	-----	-----	-----	-----	38	----	2	48.26	45.72	12.25	7.00	2.96
	87914-3832	-----	-----	-----	-----	38	----	2	48.26	45.72	13.38	6.09	5.00
E	87914-3813	-----	-----	-----	-----	38	----	3	48.26	45.72	10.92	5.84	2.79
	87914-3823	-----	-----	-----	-----	38	----	3	48.26	45.72	12.25	7.00	2.96
	87914-3833	-----	-----	-----	-----	38	----	3	48.26	45.72	13.38	6.09	5.00
	87914-3814	-----	-----	-----	-----	38	----	4	48.26	45.72	10.92	5.84	2.79
	87914-3824	-----	-----	-----	-----	38	----	4	48.26	45.72	12.25	7.00	2.96
	87914-3834	-----	-----	-----	-----	38	----	4	48.26	45.72	13.38	6.09	5.00
D	87914-3815	-----	-----	-----	-----	38	----	5	48.26	45.72	10.92	5.84	2.79
	87914-3825	-----	-----	-----	-----	38	----	5	48.26	45.72	12.25	7.00	2.96
	87914-3835	-----	-----	-----	-----	38	----	5	48.26	45.72	13.38	6.09	5.00
	87914-3816	-----	-----	-----	-----	38	----	6	48.26	45.72	10.92	5.84	2.79
	87914-3826	-----	-----	-----	-----	38	----	6	48.26	45.72	12.25	7.00	2.96
	87914-3836	-----	-----	-----	-----	38	----	6	48.26	45.72	13.38	6.09	5.00
C													
B													

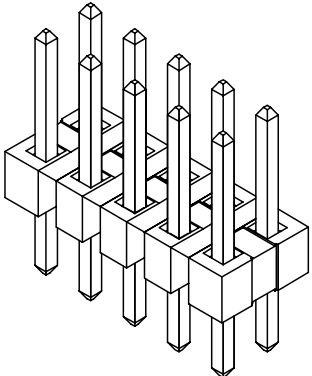
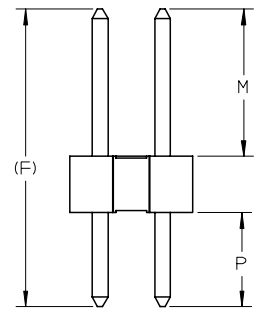
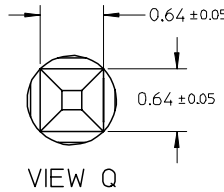
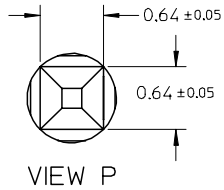
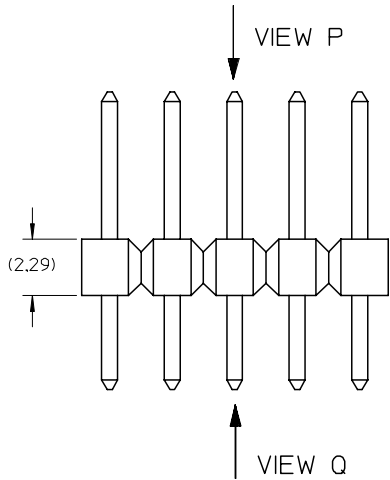
PG8. +879140108 EC NO: S2010-0695 DRWN:ATSEE 2010/02/11 CHKD:PTLIM 2004/12/08 APPR:MLONG 2010/06/05 D7	QUALITY SYMBOLS $F_A=0$ $F_G=0$ $F_P=0$	GENERAL TOLERANCES (UNLESS SPECIFIED)		DIMENSION STYLE MM ONLY		SCALE NTS	DESIGN UNITS METRIC	THIRD ANGLE PROJECTION			
		4 PLACES \pm --- \pm ---	mm INCH	DRAWN BY KCHO	DATE 2004/11/05	TITLE 2.54MM PITCH DUAL ROW HEADER SINGLE WAFER, T/H					
		3 PLACES \pm --- \pm ---		CHECKED BY PTLIM	DATE 2004/12/08	MOLEX INCORPORATED					
		2 PLACES \pm 0.20 \pm ---		APPROVED BY SCLOW	DATE 2004/12/10	MATERIAL NO. SEE TABLE	DOCUMENT NO. SD-87914-013	SHEET NO. 25 OF 46			
		1 PLACE \pm --- \pm ---		ANGULAR \pm 3 °		DRAFT WHERE APPLICABLE MUST REMAIN WITHIN DIMENSIONS					
				SIZE A3		THIS DRAWING CONTAINS INFORMATION THAT IS PROPRIETARY TO MOLEX INCORPORATED AND SHOULD NOT BE USED WITHOUT WRITTEN PERMISSION					

10 9 8 7 6 5 4 3 2 1



RECOMMENDED PCB LAYOUT

- NOTES:
- MATERIAL:
HSG: LCP, GLASS-FILLED, UL94V-0, COLOR: BLACK
PIN: 0.64MM SQ PIN, COPPER ALLOY
 - PLATING TYPE:
(1) : 0.381 μm MIN. GOLD PLATE ON CONTACT AND 1.905 μm MIN. TIN ON SOLDERTAIL OVER 1.270 μm MIN. NICKEL OVERALL.
(2) : 0.762 μm MIN. GOLD PLATE ON CONTACT AND 1.905 μm MIN. TIN ON SOLDERTAIL OVER 1.270 μm MIN. NICKEL OVERALL.
(3) : 2.540 μm MIN. TIN IN SELECTED AREA OVER 1.270 μm MIN. NICKEL OVERALL.
 - THE ABOVE 10 CKT IS FOR ILLUSTRATION PURPOSE ONLY.
 - FOR PACKAGING OPTION PLEASE REFER TO THE TABLE.
 - RECOMMENDED PCB THICKNESS 1.60MM.
 - PRODUCT SPECIFICATION: PS-87920-019
 - WAFER TO BE FLAT WITHIN 0.003mm/mm
 - IRREGULAR CIRCUIT CUTOFF WITHIN BREAKAWAY SECTION IS PERMISSIBLE. CUTTING OR CHIPPING OF THE MAIN BODY IS NOT ACCEPTABLE.
 - PARTS ARE NOT STACKABLE ON 2.54 CENTER
 - PACKAGING SPECIFICATION:
TRAY: PK-89990-489
BULK: PK-89990-491



EWB# 1010 & 1021 EC NO: S2007-0182 DRWNS:SKL IM01 2006/09/11 CHKD:CWLAM 2006/09/12 APPR:KWLEE 2006/09/13	QUALITY SYMBOLS ▽=0 ▽C=0	GENERAL TOLERANCES (UNLESS SPECIFIED) <table border="1"> <thead> <tr> <th></th> <th>mm</th> <th>INCH</th> </tr> </thead> <tbody> <tr> <td>4 PLACES</td> <td>± ---</td> <td>± ---</td> </tr> <tr> <td>3 PLACES</td> <td>± ---</td> <td>± ---</td> </tr> <tr> <td>2 PLACES</td> <td>± 0.2</td> <td>± ---</td> </tr> <tr> <td>1 PLACE</td> <td>± ---</td> <td>± ---</td> </tr> </tbody> </table> ANGULAR ± 3 °		mm	INCH	4 PLACES	± ---	± ---	3 PLACES	± ---	± ---	2 PLACES	± 0.2	± ---	1 PLACE	± ---	± ---	DIMENSION STYLE MM ONLY	SCALE NTS	DESIGN UNITS METRIC	THIRD ANGLE PROJECTION
		mm	INCH																		
	4 PLACES	± ---	± ---																		
	3 PLACES	± ---	± ---																		
2 PLACES	± 0.2	± ---																			
1 PLACE	± ---	± ---																			
DRAWN BY SKL IM01	DATE 2006/08/21	TITLE CUSTOM HEADER C-GRID, SINGLE WAFER HDR, THRU HOLE, VERTICAL, LF																			
CHECKED BY CWLAM	DATE 2006/09/04	MOLEX INCORPORATED																			
APPROVED BY KWLEE	DATE 2006/09/04	MATERIAL NO. SEE TABLE	DOCUMENT NO. SD-87914-059	SHEET NO. 1 OF 9																	

9 8 7 6 5 4 3 2 1

PART NO FOR TRAY PACKAGING	PART NO FOR BULK PACKAGING	CKT SIZE	PLATING TYPE	DIMENSION				
				A	B	F	MATING END	SOLDER TAIL
							M	P
87914-0401	-----	4	1	5.08	2.54	13.21	8.13	2.79
87914-0402	-----	4	2	5.08	2.54	13.21	8.13	2.79
87914-0403	-----	4	3	5.08	2.54	13.21	8.13	2.79
87914-0601	-----	6	1	7.62	5.08	13.21	8.13	2.79
87914-0602	-----	6	2	7.62	5.08	13.21	8.13	2.79
87914-0603	-----	6	3	7.62	5.08	13.21	8.13	2.79
87914-0801	-----	8	1	10.16	7.62	13.21	8.13	2.79
87914-0802	-----	8	2	10.16	7.62	13.21	8.13	2.79
87914-0803	-----	8	3	10.16	7.62	13.21	8.13	2.79
87914-1001	-----	10	1	12.70	10.16	13.21	8.13	2.79
87914-1002	-----	10	2	12.70	10.16	13.21	8.13	2.79
87914-1003	-----	10	3	12.70	10.16	13.21	8.13	2.79

PART NO FOR TRAY PACKAGING	PART NO FOR BULK PACKAGING	CKT SIZE	PLATING TYPE	DIMENSION				
				A	B	F	MATING END	SOLDER TAIL
							M	P
87914-0204	-----	2	1	2.54	---	11.11	6.10	2.72
87914-0205	-----	2	2	2.54	---	11.11	6.10	2.72
87914-0206	-----	2	3	2.54	---	11.11	6.10	2.72
87914-0404	-----	4	1	5.08	2.54	11.11	6.10	2.72
87914-0405	-----	4	2	5.08	2.54	11.11	6.10	2.72
87914-0406	-----	4	3	5.08	2.54	11.11	6.10	2.72
87914-0604	-----	6	1	7.62	5.08	11.11	6.10	2.72
87914-0605	-----	6	2	7.62	5.08	11.11	6.10	2.72
87914-0606	-----	6	3	7.62	5.08	11.11	6.10	2.72
87914-0804	-----	8	1	10.16	7.62	11.11	6.10	2.72
87914-0805	-----	8	2	10.16	7.62	11.11	6.10	2.72
87914-0806	-----	8	3	10.16	7.62	11.11	6.10	2.72
87914-1004	-----	10	1	12.70	10.16	11.11	6.10	2.72
87914-1005	-----	10	2	12.70	10.16	11.11	6.10	2.72
87914-1006	-----	10	3	12.70	10.16	11.11	6.10	2.72

EWR# 1010 & 1021
 EC NO: S2007-0182
 DRWNS:SKL IM01 2006/09/11
 CHKD:CWLAM 2006/09/12
 APPR:KWLEE 2006/09/13

QUALITY SYMBOLS
 ▼=0
 ▽=0

GENERAL TOLERANCES (UNLESS SPECIFIED)

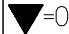
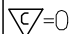
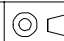
	mm	INCH
4 PLACES	± ---	± ---
3 PLACES	± ---	± ---
2 PLACES	± 0.2	± ---
1 PLACE	± ---	± ---
ANGULAR ± 3 °		

DIMENSION STYLE
 MM ONLY
 DRAWN BY SKL IM01 DATE 2006/08/21
 CHECKED BY CWLAM DATE 2006/09/04
 APPROVED BY KWLEE DATE 2006/09/04

SCALE NTS
 DESIGN UNITS METRIC
 THIRD ANGLE PROJECTION
 TITLE
 CUSTOM HEADER
 C-GRID, SINGLE WAFER HDR,
 THROU HOLE, VERTICAL, LF
 MOLEX INCORPORATED
 MATERIAL NO. SEE TABLE
 DOCUMENT NO. SD-87914-059
 SHEET NO. 2 OF 9

	10		9		8		7		6		5		4		3		2		1	
	PART NO FOR TRAY PACKAGING	PART NO FOR BULK PACKAGING	CKT SIZE	PLATING TYPE	DIMENSION					PART NO FOR TRAY PACKAGING	PART NO FOR BULK PACKAGING	CKT SIZE	PLATING TYPE	DIMENSION						
					A	B	F	M	P					A	B	F	M	P		
F	87914-4201	-----	42	1	53.34	50.80	13.21	8.13	2.79	87914-4204	-----	42	1	53.34	50.80	11.11	6.10	2.72		
	87914-4202	-----	42	2	53.34	50.80	13.21	8.13	2.79	87914-4205	-----	42	2	53.34	50.80	11.11	6.10	2.72		
	87914-4203	-----	42	3	53.34	50.80	13.21	8.13	2.79	87914-4206	-----	42	3	53.34	50.80	11.11	6.10	2.72		
	87914-4401	-----	44	1	55.88	53.34	13.21	8.13	2.79	87914-4404	-----	44	1	55.88	53.34	11.11	6.10	2.72		
	87914-4402	-----	44	2	55.88	53.34	13.21	8.13	2.79	87914-4405	-----	44	2	55.88	53.34	11.11	6.10	2.72		
E	87914-4403	-----	44	3	55.88	53.34	13.21	8.13	2.79	87914-4406	-----	44	3	55.88	53.34	11.11	6.10	2.72		
	87914-4601	-----	46	1	58.42	55.88	13.21	8.13	2.79	87914-4604	-----	46	1	58.42	55.88	11.11	6.10	2.72		
	87914-4602	-----	46	2	58.42	55.88	13.21	8.13	2.79	87914-4605	-----	46	2	58.42	55.88	11.11	6.10	2.72		
	87914-4603	-----	46	3	58.42	55.88	13.21	8.13	2.79	87914-4606	-----	46	3	58.42	55.88	11.11	6.10	2.72		
D	87914-4801	-----	48	1	60.96	58.42	13.21	8.13	2.79	87914-4804	-----	48	1	60.96	58.42	11.11	6.10	2.72		
	87914-4802	-----	48	2	60.96	58.42	13.21	8.13	2.79	87914-4805	-----	48	2	60.96	58.42	11.11	6.10	2.72		
	87914-4803	-----	48	3	60.96	58.42	13.21	8.13	2.79	87914-4806	-----	48	3	60.96	58.42	11.11	6.10	2.72		
	87914-5001	-----	50	1	63.50	60.96	13.21	8.13	2.79	87914-5004	-----	50	1	63.50	60.96	11.11	6.10	2.72		
	87914-5002	-----	50	2	63.50	60.96	13.21	8.13	2.79	87914-5005	-----	50	2	63.50	60.96	11.11	6.10	2.72		
C	87914-5003	-----	50	3	63.50	60.96	13.21	8.13	2.79	87914-5006	-----	50	3	63.50	60.96	11.11	6.10	2.72		

B

EWR# 1010 & 1021 EC NO: S2007-0182 DRWNS:SKL IM01 2006/09/11 CHKD:CWLAM 2006/09/12 APPR:KWLEE 2006/09/13	QUALITY SYMBOLS  =0  =0	GENERAL TOLERANCES (UNLESS SPECIFIED) <table border="1"> <tr> <th></th> <th>mm</th> <th>INCH</th> </tr> <tr> <td>4 PLACES</td> <td>± .---</td> <td>± .---</td> </tr> <tr> <td>3 PLACES</td> <td>± .---</td> <td>± .---</td> </tr> <tr> <td>2 PLACES</td> <td>± 0.2</td> <td>± .---</td> </tr> <tr> <td>1 PLACE</td> <td>± .---</td> <td>± .---</td> </tr> </table>		mm	INCH	4 PLACES	± .---	± .---	3 PLACES	± .---	± .---	2 PLACES	± 0.2	± .---	1 PLACE	± .---	± .---	DIMENSION STYLE MM ONLY	SCALE NTS	DESIGN UNITS METRIC	 THIRD ANGLE PROJECTION
			mm	INCH																	
		4 PLACES	± .---	± .---																	
		3 PLACES	± .---	± .---																	
2 PLACES	± 0.2	± .---																			
1 PLACE	± .---	± .---																			
DRAWN BY SKL IM01 DATE 2006/08/21 CHECKED BY CWLAM DATE 2006/09/04 APPROVED BY KWLEE DATE 2006/09/04		TITLE CUSTOM HEADER C-GRID, SINGLE WAFER HDR, THROU HOLE, VERTICAL, LF																			
MATERIAL NO.		DOCUMENT NO. SD-87914-059		SHEET NO. 6 OF 9																	
DRAFT WHERE APPLICABLE MUST REMAIN WITHIN DIMENSIONS		SEE TABLE		MOLEX INCORPORATED																	


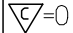
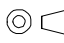
F	10		9		8		7		6		5		4		3		2		1	
	PART NO FOR TRAY PACKAGING	PART NO FOR BULK PACKAGING	CKT SIZE	PLATING TYPE	DIMENSION					PART NO FOR TRAY PACKAGING	PART NO FOR BULK PACKAGING	CKT SIZE	PLATING TYPE	DIMENSION						
					A	B	F	M	P					A	B	F	M	P		
	-----	87914-5201	52	1	66.04	63.50	13.21	8.13	2.79	-----	87914-5204	52	1	66.04	63.50	11.11	6.10	2.72		
	-----	87914-5202	52	2	66.04	63.50	13.21	8.13	2.79	-----	87914-5205	52	2	66.04	63.50	11.11	6.10	2.72		
	-----	87914-5203	52	3	66.04	63.50	13.21	8.13	2.79	-----	87914-5206	52	3	66.04	63.50	11.11	6.10	2.72		
	-----	87914-5401	54	1	68.58	66.04	13.21	8.13	2.79	-----	87914-5404	54	1	68.58	66.04	11.11	6.10	2.72		
	-----	87914-5402	54	2	68.58	66.04	13.21	8.13	2.79	-----	87914-5405	54	2	68.58	66.04	11.11	6.10	2.72		
	-----	87914-5403	54	3	68.58	66.04	13.21	8.13	2.79	-----	87914-5406	54	3	68.58	66.04	11.11	6.10	2.72		
	-----	87914-5601	56	1	71.12	68.58	13.21	8.13	2.79	-----	87914-5604	56	1	71.12	68.58	11.11	6.10	2.72		
	-----	87914-5602	56	2	71.12	68.58	13.21	8.13	2.79	-----	87914-5605	56	2	71.12	68.58	11.11	6.10	2.72		
	-----	87914-5603	56	3	71.12	68.58	13.21	8.13	2.79	-----	87914-5606	56	3	71.12	68.58	11.11	6.10	2.72		
	-----	87914-5801	58	1	73.66	71.12	13.21	8.13	2.79	-----	87914-5804	58	1	73.66	71.12	11.11	6.10	2.72		
	-----	87914-5802	58	2	73.66	71.12	13.21	8.13	2.79	-----	87914-5805	58	2	73.66	71.12	11.11	6.10	2.72		
	-----	87914-5803	58	3	73.66	71.12	13.21	8.13	2.79	-----	87914-5806	58	3	73.66	71.12	11.11	6.10	2.72		
	-----	87914-6001	60	1	76.20	73.66	13.21	8.13	2.79	-----	87914-6004	60	1	76.20	73.66	11.11	6.10	2.72		
	-----	87914-6002	60	2	76.20	73.66	13.21	8.13	2.79	-----	87914-6005	60	2	76.20	73.66	11.11	6.10	2.72		
	-----	87914-6003	60	3	76.20	73.66	13.21	8.13	2.79	-----	87914-6006	60	3	76.20	73.66	11.11	6.10	2.72		

B																			
---	--	--	--	--	--	--	--	--	--	--	--	--	--	--	--	--	--	--	--

A	EWR# 1010 & 1021 EC NO: S2007-0182 DRWNS:SKL IM01 2006/09/11 CHKD:CWLAM 2006/09/12 APPR:KWLEE 2006/09/13	QUALITY SYMBOLS =0 =0	DESCRIPTION REV	GENERAL TOLERANCES (UNLESS SPECIFIED)	DIMENSION STYLE MM ONLY	SCALE NTS	DESIGN UNITS METRIC	THIRD ANGLE PROJECTION	TITLE CUSTOM HEADER C-GRID, SINGLE WAFER HDR, THROU HOLE, VERTICAL, LF											
				4 PLACES ± --- ± --- 3 PLACES ± --- ± --- 2 PLACES ± 0.2 ± --- 1 PLACE ± --- ± --- ANGULAR ± 3 °	DRAWN BY SKL IM01	DATE 2006/08/21	MOLEX INCORPORATED													
				DRAFT WHERE APPLICABLE MUST REMAIN WITHIN DIMENSIONS	APPROVED BY KWLEE	DATE 2006/09/04	MATERIAL NO.	DOCUMENT NO. SD-87914-059	SHEET NO. 7 OF 9											
				SIZE 	THIS DRAWING CONTAINS INFORMATION THAT IS PROPRIETARY TO MOLEX INCORPORATED AND SHOULD NOT BE USED WITHOUT WRITTEN PERMISSION															

F	10		9		8		7		6		5		4		3		2		1	
	PART NO FOR TRAY PACKAGING	PART NO FOR BULK PACKAGING	CKT SIZE	PLATING TYPE	DIMENSION					PART NO FOR TRAY PACKAGING	PART NO FOR BULK PACKAGING	CKT SIZE	PLATING TYPE	DIMENSION						
					A	B	F	M	P					A	B	F	M	P		
	-----	87914-6201	62	1	78.74	76.20	13.21	8.13	2.79	-----	87914-6204	62	1	78.74	76.20	11.11	6.10	2.72		
	-----	87914-6202	62	2	78.74	76.20	13.21	8.13	2.79	-----	87914-6205	62	2	78.74	76.20	11.11	6.10	2.72		
	-----	87914-6203	62	3	78.74	76.20	13.21	8.13	2.79	-----	87914-6206	62	3	78.74	76.20	11.11	6.10	2.72		
	-----	87914-6401	64	1	81.28	78.74	13.21	8.13	2.79	-----	87914-6404	64	1	81.28	78.74	11.11	6.10	2.72		
	-----	87914-6402	64	2	81.28	78.74	13.21	8.13	2.79	-----	87914-6405	64	2	81.28	78.74	11.11	6.10	2.72		
	-----	87914-6403	64	3	81.28	78.74	13.21	8.13	2.79	-----	87914-6406	64	3	81.28	78.74	11.11	6.10	2.72		
	-----	87914-6601	66	1	83.82	81.28	13.21	8.13	2.79	-----	87914-6604	66	1	83.82	81.28	11.11	6.10	2.72		
	-----	87914-6602	66	2	83.82	81.28	13.21	8.13	2.79	-----	87914-6605	66	2	83.82	81.28	11.11	6.10	2.72		
	-----	87914-6603	66	3	83.82	81.28	13.21	8.13	2.79	-----	87914-6606	66	3	83.82	81.28	11.11	6.10	2.72		
	-----	87914-6801	68	1	86.36	83.82	13.21	8.13	2.79	-----	87914-6804	68	1	86.36	83.82	11.11	6.10	2.72		
	-----	87914-6802	68	2	86.36	83.82	13.21	8.13	2.79	-----	87914-6805	68	2	86.36	83.82	11.11	6.10	2.72		
	-----	87914-6803	68	3	86.36	83.82	13.21	8.13	2.79	-----	87914-6806	68	3	86.36	83.82	11.11	6.10	2.72		
	-----	87914-7001	70	1	88.90	86.36	13.21	8.13	2.79	-----	87914-7004	70	1	88.90	86.36	11.11	6.10	2.72		
	-----	87914-7002	70	2	88.90	86.36	13.21	8.13	2.79	-----	87914-7005	70	2	88.90	86.36	11.11	6.10	2.72		
	-----	87914-7003	70	3	88.90	86.36	13.21	8.13	2.79	-----	87914-7006	70	3	88.90	86.36	11.11	6.10	2.72		

--	--	--	--	--	--	--	--	--	--	--	--	--	--	--	--	--	--	--	--	--

EWB# 1010 & 1021 EC NO: S2007-0182 DRWNS:SKL IM01 2006/09/11 CHKD:CWLAM 2006/09/12 APPR:KWLEE 2006/09/13	QUALITY SYMBOLS  =0  =0	GENERAL TOLERANCES (UNLESS SPECIFIED)	DIMENSION STYLE MM ONLY	SCALE NTS	DESIGN UNITS METRIC	 THIRD ANGLE PROJECTION		
		4 PLACES ± --- ± --- 3 PLACES ± --- ± --- 2 PLACES ± 0.2 ± --- 1 PLACE ± --- ± ---	mm INCH	DRAWN BY SKL IM01	DATE 2006/08/21	TITLE CUSTOM HEADER C-GRID, SINGLE WAFER HDR, THROU HOLE, VERTICAL, LF		
		ANGULAR ± 3 °	DRAFT WHERE APPLICABLE MUST REMAIN WITHIN DIMENSIONS	CHECKED BY CWLAM	DATE 2006/09/04	MOLEX INCORPORATED		
		APPROVED BY KWLEE	DATE 2006/09/04	MATERIAL NO. SEE TABLE	DOCUMENT NO. SD-87914-059	SHEET NO. 8 OF 9		

F	10		9		8		7		6		5		4		3		2		1	
	PART NO FOR TRAY PACKAGING	PART NO FOR BULK PACKAGING	CKT SIZE	PLATING TYPE	DIMENSION					PART NO FOR TRAY PACKAGING	PART NO FOR BULK PACKAGING	CKT SIZE	PLATING TYPE	DIMENSION						
					A	B	F	M	P					A	B	F	M	P		
	-----	87914-7201	72	1	91.44	88.90	13.21	8.13	2.79	-----	87914-7204	72	1	91.44	88.90	11.11	6.10	2.72		
	-----	87914-7202	72	2	91.44	88.90	13.21	8.13	2.79	-----	87914-7205	72	2	91.44	88.90	11.11	6.10	2.72		
	-----	87914-7203	72	3	91.44	88.90	13.21	8.13	2.79	-----	87914-7206	72	3	91.44	88.90	11.11	6.10	2.72		
	-----	87914-7401	74	1	93.98	91.44	13.21	8.13	2.79	-----	87914-7404	74	1	93.98	91.44	11.11	6.10	2.72		
	-----	87914-7402	74	2	93.98	91.44	13.21	8.13	2.79	-----	87914-7405	74	2	93.98	91.44	11.11	6.10	2.72		
	-----	87914-7403	74	3	93.98	91.44	13.21	8.13	2.79	-----	87914-7406	74	3	93.98	91.44	11.11	6.10	2.72		
	-----	87914-7601	76	1	96.52	93.98	13.21	8.13	2.79	-----	87914-7604	76	1	96.52	93.98	11.11	6.10	2.72		
	-----	87914-7602	76	2	96.52	93.98	13.21	8.13	2.79	-----	87914-7605	76	2	96.52	93.98	11.11	6.10	2.72		
	-----	87914-7603	76	3	96.52	93.98	13.21	8.13	2.79	-----	87914-7606	76	3	96.52	93.98	11.11	6.10	2.72		
	-----	87914-7801	78	1	99.06	96.52	13.21	8.13	2.79	-----	87914-7804	78	1	99.06	96.52	11.11	6.10	2.72		
	-----	87914-7802	78	2	99.06	96.52	13.21	8.13	2.79	-----	87914-7805	78	2	99.06	96.52	11.11	6.10	2.72		
	-----	87914-7803	78	3	99.06	96.52	13.21	8.13	2.79	-----	87914-7806	78	3	99.06	96.52	11.11	6.10	2.72		
	-----	87914-8001	80	1	101.60	99.06	13.21	8.13	2.79	-----	87914-8004	80	1	101.60	99.06	11.11	6.10	2.72		
	-----	87914-8002	80	2	101.60	99.06	13.21	8.13	2.79	-----	87914-8005	80	2	101.60	99.06	11.11	6.10	2.72		
	-----	87914-8003	80	3	101.60	99.06	13.21	8.13	2.79	-----	87914-8006	80	3	101.60	99.06	11.11	6.10	2.72		

--	--	--	--	--	--	--	--	--	--	--	--	--	--	--	--	--	--	--	--	--

A	EWR# 1010 & 1021 EC NO: S2007-0182 DRWNS:SKL IM01 2006/09/11 CHKD:CWLAM 2006/09/12 APPR:KWLEE 2006/09/13	QUALITY SYMBOLS	$\nabla = 0$ $\triangle = 0$	GENERAL TOLERANCES (UNLESS SPECIFIED) <table border="1"> <tr> <td></td> <td>mm</td> <td>INCH</td> </tr> <tr> <td>4 PLACES</td> <td>$\pm .005$</td> <td>$\pm .0004$</td> </tr> <tr> <td>3 PLACES</td> <td>$\pm .005$</td> <td>$\pm .0004$</td> </tr> <tr> <td>2 PLACES</td> <td>± 0.2</td> <td>$\pm .008$</td> </tr> <tr> <td>1 PLACE</td> <td>$\pm .010$</td> <td>$\pm .0004$</td> </tr> </table>		mm	INCH	4 PLACES	$\pm .005$	$\pm .0004$	3 PLACES	$\pm .005$	$\pm .0004$	2 PLACES	± 0.2	$\pm .008$	1 PLACE	$\pm .010$	$\pm .0004$	DIMENSION STYLE MM ONLY	SCALE NTS	DESIGN UNITS METRIC	THIRD ANGLE PROJECTION	DRAWN BY SKL IM01	DATE 2006/08/21	TITLE CUSTOM HEADER C-GRID, SINGLE WAFER HDR, THROU HOLE, VERTICAL, LF
			mm	INCH																						
		4 PLACES	$\pm .005$	$\pm .0004$																						
		3 PLACES	$\pm .005$	$\pm .0004$																						
2 PLACES	± 0.2	$\pm .008$																								
1 PLACE	$\pm .010$	$\pm .0004$																								
APPROVED BY KWLEE	DATE 2006/09/04	MOLEX INCORPORATED	MATERIAL NO.	DOCUMENT NO. SD-87914-059	SHEET NO. 9 OF 9																					
DRAFT WHERE APPLICABLE MUST REMAIN WITHIN DIMENSIONS	SEE TABLE	THIS DRAWING CONTAINS INFORMATION THAT IS PROPRIETARY TO MOLEX INCORPORATED AND SHOULD NOT BE USED WITHOUT WRITTEN PERMISSION																								
A																										