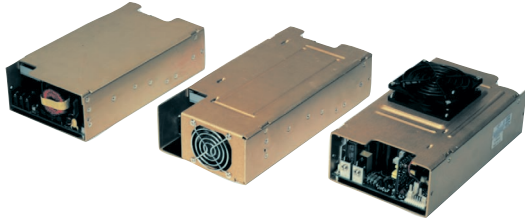


350 Watts LPS350 Series

Total Power: 350 Watts
Input Voltage: 85-264 VAC
 120-300 VDC
of Outputs: Single



Special Features

- Active power factor correction
- IEC EN6100-3-2 compliance
- Remote sense
- Power fail and remote inhibit
- Single wire current sharing
- Built-in EMI filter
- Low output ripple
- Supervisory output 5 V and 12 V
- Overvoltage protection
- Overload protection
- Thermal overload protection
- DC power good
- Cover -C
- 130 KHz switching frequency
- Optional with fan cover -CF
- Optional end-mounted fan - CEF

Environmental

Operating temperature: 0° to 50°C ambient
 derate each output at 2.5% per degree from 50° to 70°C

Electromagnetic susceptibility: Designed to meet IEC 801, -2, -3, -4, -5, -6, Level 3

Humidity: Operating; non-condensing
 5% to 95%

Vibration: Three orthogonal axes, sweep at 1 oct/min, 5 min. dwell at four major resonances
 0.7 G peak 5 Hz to 500 Hz, operational

Storage temperature: -40° to 85°C

Temperature coefficient: ±.04% per °C

MTBF demonstrated: >550,000 hours at full load
 and 25°C ambient conditions

Electrical Specs

Input

Input range	85-264 VAC; 120-300 VDC
Frequency	47-440 Hz
Inrush current	38 A max., cold start @ 25°C
Efficiency	75% typical at full load
EMI filter	FCC Class B conducted and radiated CISPR 22 Class B conducted and radiated EN55022 Class B conducted and radiated VDE 0878 PT3 Class B conducted and radiated.
Power factor	0.99 typical
Safety ground leakage current	<0.5 mA @ 50/60 Hz, 264 VAC input

Output

Maximum power	With cover: 350 W with 30 CFM forced air, (-C) (-CF) (-CEF)
Adjustment range	2:1 wide ratio
Supervisory outputs	5 V @ 500 mA regulated, 12 V @ 150 mA x2
Hold-up time	20 ms @ 350 W load, 115 VAC nominal line at factory voltage setting
Overload protection	Short circuit protection on all outputs. Case overload protected @ 110-145% above peak rating
Overvoltage protection	5 V output: 5.7-6.7 VDC. Other models 10% to 25% above nominal output

Logic Control

Power failure	TTL logic signal goes high 50-150 msec after 5 V output. It goes low at least 4 msec before loss of regulation
Remote on/off	Requires an external contact (N.O or N.C) to inhibit outputs
DC-OK	TTL logic goes high 50-150 msec after the output. It goes low when there is loss of regulation.
Remote sense	Compensates for 0.5 V lead drop min. Will operate without remote sense connected. Reverse connection protected.

Safety

VDE	0805/EN60950 (IEC950)	21310-3336-0001
ULUL1950	E186249	
CSA	CSA 22.2-234 Level 5	LR109492C
NEMKO	EN 60950/EMKO-TUE (74-sec) 203	P98102115
BABT	EN60950/BS7002	608857, 608858, 609097
CB	Certificate and report	5734, 6280, 6281
CE	Mark (LVD)	

rev 07.11.05



AMERICAS
 5810 Van Allen Way
 Carlsbad, CA 92008
 Telephone: 760-930-4600
 Facsimile: 760-930-0698

EUROPE
 Astec House, Waterfront Business Park
 Merry Hill, Dudley
 West Midlands, DY5 1LX, UK
 Telephone: 44 (1384) 842-211
 Facsimile: 44 (1384) 843-355

ASIA
 Units 2111-2116, Level 21
 Tower 1, Metroplaza
 223, Hing Fong Road
 Kwai Fong, New Territories
 Hong Kong
 Telephone: 852-2437-9662
 Facsimile: 852-2402-4426



Ordering Information

Model Number	Output Voltage	Minimum Load	Maximum Load with 30 CFM Forced Air	Peak Load ¹	Regulation ²	Ripple P/P (PARD) ³
LPS352-C	5 V (3-6 V)	0 A	70 A	80 A	±2%	50 mV
LPS353-C	12 V (6-12 V)	0 A	29.2 A	33 A	±2%	120 mV
LPS354-C	15 V (12-24 V)	0 A	23.3 A	26 A	±2%	150 mV
LPS355-C	24 V (24-48 V)	0 A	14.6 A	16 A	±2%	240 mV

- Peak current lasting <30 seconds with a maximum 10% duty cycle.
- At 25°C including initial tolerance, line voltage, load currents and output voltages adjusted to factory settings.
- Peak-to-peak with 20 MHz bandwidth and 10 μF in parallel with a 0.1 μF capacitor at rated line voltage and load ranges.
- If optional CF or CEF fans are not used, 30CFM forced air cooling needs to be provided and is required through the length of the power supply. Not convection rated.
- Output voltage adjustment requires a 1A load.
- Remote inhibit resets OVP latch.

Note: -CF suffix added to the model number indicates cover with yop fan;
 -CEF suffix added to model number indicates end-mounted fan chassis.

Pin Assignments

Connector

SK1	PIN 1	Neutral	
	PIN 2	Line	
SK3	PIN 1	N/C	
	PIN 2	N/C	
SK4	PIN 3	+ Sense	
	PIN 4	- Sense	
	PIN 5	POK	
	PIN 6	C.Share	
	PIN 7	DC-OK	
	PIN 8	Inhibit (N.O.)	
	PIN 9	Inhibit (N.C.)	
	PIN 10	COM	
	SK5	PIN 1	+ Fan 1 (12 V @ 150mA)
		PIN 2	- Common
SK6	PIN 1	+ Fan 2 (12V @ 150mA)	
	PIN 2	- Common	

Mating Connectors

SK3	Molex 22-01-1104 PINS:08-70-0057
SK4	Molex 22-01-3027 PINS: 08-50-0114
SK5	Molex 22-01-3027 PINS: 08-50-0114
SK6	Molex 22-01-3027 PINS: 08-50-0114

Astec Connector Kit #70-841-011

Notes:

- Specifications subject to change without notice.
- All dimensions in inches (mm), tolerance is ±.02".
- Specifications are at factory settings
- To enable normally closed Remote Inhibit, cut jumper J1.
- Mounting maximum insertion depth is 0.12".
- Warranty: 1 year
- Weight: 3.6 lb. / 1.64 kg.

