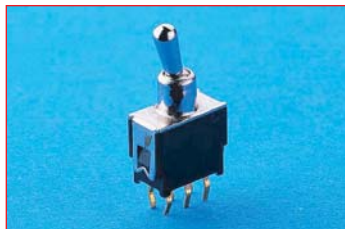


## FEATURE

1. Metal Bushing
2. Sealed construction available
3. DPDT / 2.54 mm pitch



**NEW**

## SPECIFICATIONS

CONTACT RATING: max 0.4 VA max @ 48 V AC or DC  
Min . 1 A / 20 mV AC or DC

ELECTRICAL LIFE: 50,000 make-and-break cycles at full load

CONTACT RESISTANCE: 50 mΩ max. initial @ 2-4 VDC, 100 mA

INSULATION RESISTANCE: 500 MΩ min.

DIELECTRIC STRENGTH: 500 V RMS @ sea level.

DEGREE OF PROTECTION : IP67

OPERATING TEMPERATURE: -30°C to 85°C

## MATERIALS

Actuator - Brass , chrome plated, internal o-ring seal are available

Bushing and Housing - Stainless Steel

CASE - glass filled nylon 4/6, flame retardant heat stabilized (UL94V-0 )

CONTACT -- phosphor bronze gold-plated over nickel plated

TERMINAL - phosphor bronze tin-lead plated over nickel plated

TERMINAL SEAL - Epoxy

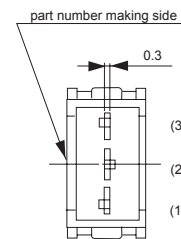
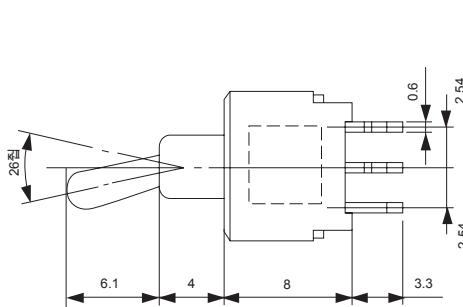
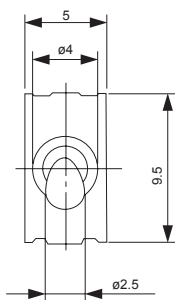
## How do you modify the switches you need!!

E T - 4 - T 1 C K - A 5 S

Switches Function			Actuator		Termination		Contact Material		Vertical support Bracket	
washable	Non-washable		T1	10.16	C	P.C	K	(std) gold / tin-lead	(none)	
ET-4	ETN-4	SP on-none-on	T2	6.10	H	horison			A5S	Vertical bracket
ET-4B	ETN-4B	SP on-none-(on)	T3	8.13	V	vertical				
ET-4A	ETN-4A	SP on-off-on	T4	13.97						
ET-4H	ETN-4H	SP (on)-off-(on)	T5	3.50						
ET-4I	ETN-4I	SP on-off-(on)								
ET-5	ETN-5	DP on-none-on								
ET-5B	ETN-5B	DP on-none-(on)								
ET-5A	ETN-5A	DP on-off-on								
ET-5H	ETN-5H	DP (on)-off-(on)								
ET-5I	ETN-5I	DP on-off-(on)								

\* now the ET-(X)A are available . the other option are available soon . Please inquiry our office first.

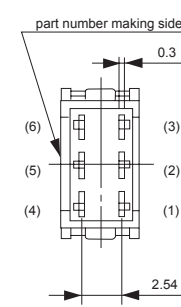
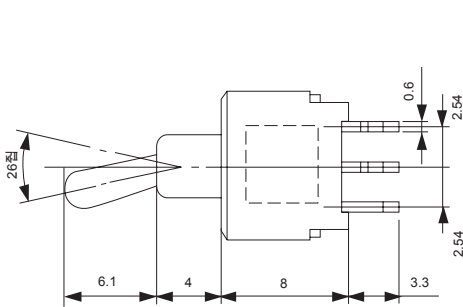
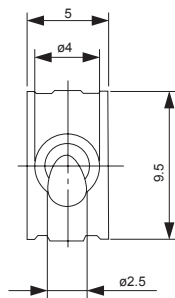
Model No.	Switching position		
ET-4	ON	none	ON
ET-4A	ON	OFF	ON
ET-4B	ON	None	(ON)
ET-4H	(ON)	OFF	(ON)
ET-4I	ON	OFF	(ON)
Term. Comm.	2-3	open	2-1



ET-4- T2CK

SPDT

Model No.	Switching position		
ET-5	ON	none	ON
ET-5A	ON	OFF	(ON)
ET-5B	ON	None	ON
ET-5H	(ON)	OFF	(ON)
ET-5I	ON	OFF	(ON)
Term. Comm.	2-3,5-6	open	2-1,5-4

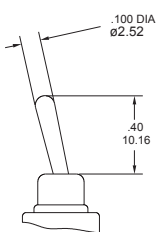


ET-5- T2CK

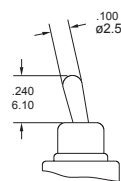
DPDT

Actuator Option

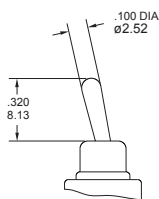
T1



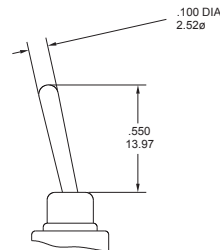
T2



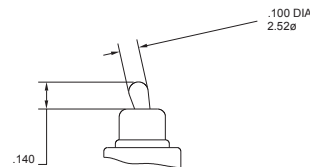
T3



T4

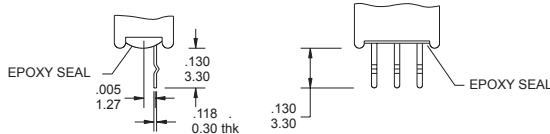


T5

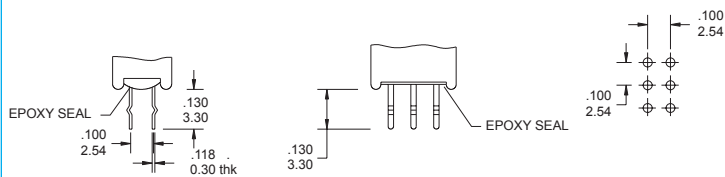


Terminal Option

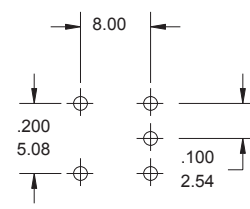
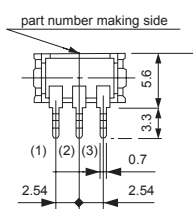
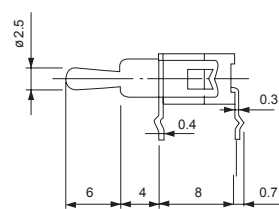
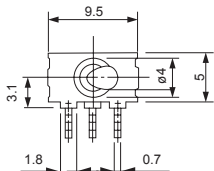
SP



DP



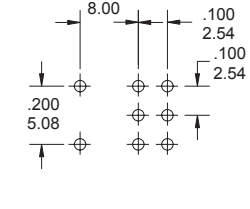
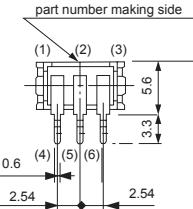
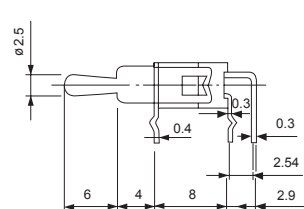
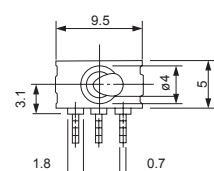
H  
horizon  
right  
angle  
type



ET-4 - THK

PC MOUNTING

H  
horizon  
right  
angle  
type



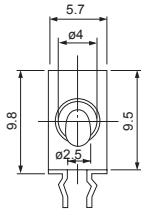
ET-5- THK

PC MOUNTING

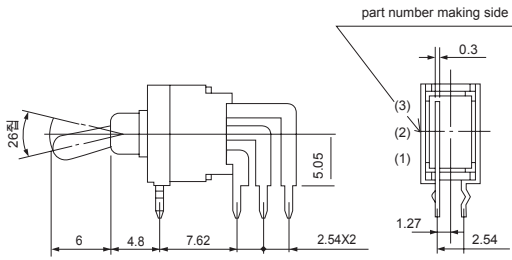
SPDT

DPDT

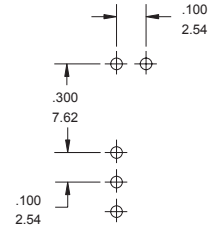
V  
Vertical right  
angle type



SPDT

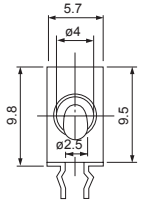


ET-4 - TVK

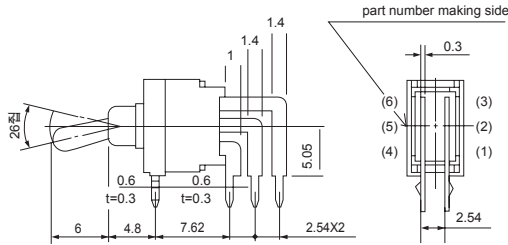


PC MOUNTING

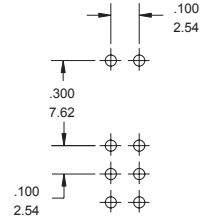
V  
Vertical right  
angle type



DPDT



ET-5- TVK



PC MOUNTING

CONTACT MATERIAL OPTIONS

CODE	CONTACT MATERIAL	TERMINAL MATERIAL	RATING
K	Brass , gold plated	Copper alloy, tin-lead plated	0.4VA max @48 VAC or VDC