



HCT/SC373
HCT/SC374
HCT/SC533
HCT/SC534
HCT/SC563
HCT/SC564
HCT/SC573
HCT/SC574

Octal D-Type Transparent Latches
Octal Edge-Triggered Flip Flops

Product Summary

Device	Outputs	High Speed (74HCT)	Standard (74SC)	Military (54HCT)
Transparent Latches	Non-Inverted	74HCT373 ✓	74SC373 ✓	54HCT373 ✓
	Inverted	74HCT533 ✓	74SC533 ✓	54HCT533 ✓
	Inverted	74HCT563 ✓	74SC563 ✓	54HCT563 ✓
	Non-Inverted	74HCT573 ✓	74SC573 ✓	54HCT573 ✓
D-Type Flip Flop	Non-Inverted	74HCT374 ✓	74SC374 ✓	54HCT374 ✓
	Inverted	74HCT534 ✓	74SC534 ✓	54HCT534 ✓
	Inverted	74HCT564 ✓	74SC564 ✓	54HCT564 ✓
	Non-Inverted	74HCT574 ✓	74SC574 ✓	54HCT574 ✓
Operating temperature range (°C)		-40 to +85	-40 to +85	-55 to +125
Recommended operating voltage (V)		4.75 to 5.25	4.75 to 5.25	4.50 to 5.50
Maximum gate propagation delay time (ns)		38	47	47

Features

- Pin and function compatible to 54/74LS equivalent circuits.
- Typical operating supply current: 10µA
- MIL STD 883B Screening/Leadless chip carrier available.
- Fast propagation delay times
- Fan out of 30 LSTTL loads.
- Fully TTL and CMOS compatible
- 40°C to +85°C operating temperature range
- Capable of operating over 3-volt to 6-volt range
- High speed silicon-gate CMOS technology

General Description

This family of 8-bit latches/flip flops feature 3-state operation and are designed for use in high speed, bus oriented systems.

The octal latches are transparent D-type latches, meaning that while the enable (E) is high, the Q outputs will follow the data D-inputs. When the enable is taken low, the outputs will be latched at the level of the data that was setup.

The octal flip flops are edge-triggered D-type flip flops. On the positive transition of the clock, the Q outputs will be set to the last state that was setup at the D-inputs.

Schmitt Trigger buffered inputs at the enable/clock lines simplify system design through improved noise rejection capability of the hysteresis. A buffered output control input can be used to place the outputs in either an active state or in a high impedance state. While in the high impedance state, the outputs neither load nor drive the bus lines.

Absolute Maximum Ratings

HCT/SC373, 374, 533, 534, 563, 564, 573, 574

Rating	Value
Supply voltage, VCC	-0.5V to +7.0V
Input voltage, VI	-0.3V to VCC +0.3V
Short circuit output current, ISC (not more than 1 output for more than 1 second)	±100mA
Operating temperature range, TA 74HCT, 74SC (commercial) 54HCT (military)	-40°C to +85°C -55°C to +125°C
Storage temperature, TS	-65°C to +150°C
Power dissipation, PD	500mW

Recommended Operating Conditions

Symbol	Parameter	54HCT			74HCT/74SC			Unit	Conditions
		min	typ	max	min	typ	max		
VCC	Supply voltage	4.50	5.00	5.50	4.75	5.00	5.25	V	
VI	Input voltage	0		VCC	0		VCC		
TA	Operating temperature range	-55		125	0		70	°C	
tW	Clock/enable pulse clock width high low	15			15			ns	
		15			15				
tSU	Data setup time XX3 XX4	0 ↓			0 ↓			ns	(see note 1)
		20 ↑			20 ↑				
tH	Data hold time XX3 XX4	10 ↓			10 ↓			ns	(see note 1)
		0 ↑			0 ↑				
VCCF	Functional operating VCC Range	3.00		6.00	3.00		6.00	V	

Electrical Characteristics (over recommended operating conditions)

Symbol	Parameter	54HCT			74HCT/74SC			Unit	Conditions
		min	typ	max	min	typ	max		
V _{IH}	High-level input voltage	2.0			2.0			V	
V _{IL}	Low-level input voltage			0.7			0.8		
V _{OH}	High-level output voltage	2.4			2.4			V	VCC = min, I _{OH} = -10mA V _{IL} = 0.8V, V _{IH} = 2V
V _{OL}	Low-level output voltage			0.40			0.40		
I _{OZH}	OFF-State output current, high-level voltage applied			20			20	μA	VCC = max, V _O = 2.7V V _{IL} = 0.8V, V _{IH} = 2V
I _{OZL}	OFF-State output current, low-level voltage applied			-20			-20		
I _I	Input current			5			1	μA	VCC = max, V _I = VCC
I _{CC}	Supply current		0.01	0.5		0.01	0.1	mA	VCC = max, outputs open V _I = VCC or GND

Note 1: Clock/Enable transition — ↑ Low to high, ↓ High to low.

Switching Characteristics ($V_{CC} = 5.0V$, $T_A = 25^{\circ}C$)

Symbol	Parameter	54HCT/74HCT			74SC			Unit	Conditions
		min	typ	max	min	typ	max		
tPLH	Data to output propagation delay, low-to-high-level output XX3			38			47	ns	CL = 50 pF, RL = 1 KΩ
tPHL	Data to output propagation delay, high-to-low-level output XX3			38			47		
tPLH	Clock/enable to output propagation delay, low-to-high-level output XX3 XX4			30 28			49 47	ns	CL = 50 pF, RL = 1 KΩ
tPHL	Clock/enable to output propagation delay, high-to-low level output XX3 XX4			30 28			49 47		
tPZH	Output control to output propagation delay, enable time to high-level output XX3 XX4			28 28			47 47	ns	CL = 50 pF, RL = 1 KΩ
tPZL	Output control to output propagation delay, enable time to low-level output XX3 XX4			36 28			47 47		
tPHZ	Output control to output propagation delay, disable time from high-level output XX3 XX4			20 20			33 33	ns	CL = 50 pF, RL = 1 KΩ
tPLZ	Output control to output propagation delay, disable time from low-level output XX3 XX4			25 25			41 41		
fmax	Maximum operating frequency	35			20			MHz	All outputs loaded
C _I	Input Capacitance		8			8		pF	

Ordering Information

HCT/SC373, 374, 533, 534, 563, 564, 573, 574

Octal D-Type Transparent Latches

Package	Outputs	High Speed (74HCT)	Standard (74SC)	Military (54HCT)
20-pin plastic DIP	Non-Inverting Inverting Inverting Non-Inverting	74HCT373P 74HCT533P 74HCT563P 74HCT573P	74SC373P 74SC533P 74SC563P 74SC573P	N/A
20-pin CERDIP	Non-Inverting Inverting Inverting Non-Inverting	74HCT373D 74HCT533D 74HCT563D 74HCT573D	74SC373D 74SC533D 74SC563D 74SC573D	54HCT373D 54HCT533D 54HCT563D 54HCT573D
20-pin ceramic side-brazed DIP	Non-Inverting Inverting Inverting Non-Inverting	74HCT373C 74HCT533C 74HCT563C 74HCT573C	74SC373C 74SC533C 74SC563C 74SC573C	54HCT373C 54HCT533C 54HCT563C 54HCT573C

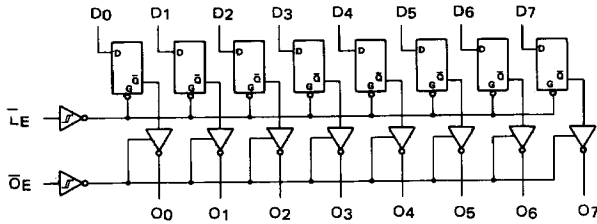
Octal Edge-Triggered Flip Flops

Package	Outputs	High Speed (74HCT)	Standard (74SC)	Military (54HCT)
20-pin plastic DIP	Non-Inverting Inverting Inverting Non-Inverting	74HCT374P 74HCT534P 74HCT564P 74HCT574P	74SC374P 74SC534P 74SC564P 74SC574P	N/A
20-pin CERDIP	Non-Inverting Inverting Inverting Non-Inverting	74HCT374D 74HCT534D 74HCT564D 74HCT574D	74SC374D 74SC534D 74SC564D 74SC574D	54HCT374D 54HCT534D 54HCT564D 54HCT574D
20-pin ceramic side-brazed DIP	Non-Inverting Inverting Inverting Non-Inverting	74HCT374C 74HCT534C 74HCT564C 74HCT574C	74SC374C 74SC534C 74SC564C 74SC574C	54HCT374C 54HCT534C 54HCT564C 54HCT574C

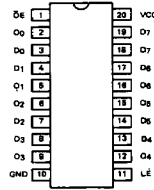
Note: See Switching Waveforms and Test Circuit at end of this section.

Functional Block Diagrams and Pin Configurations

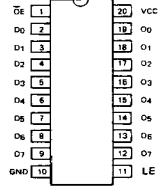
373, 573



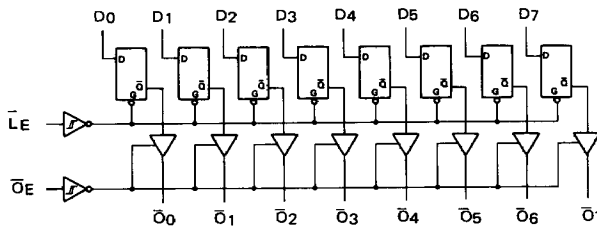
373



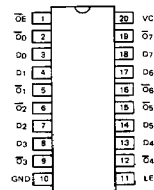
573



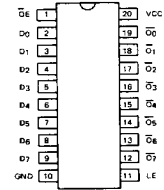
533, 563



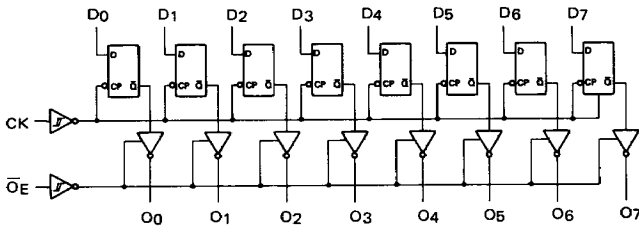
533



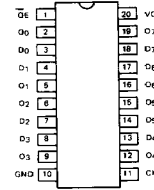
563



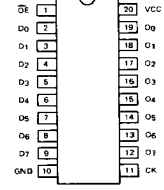
374, 574



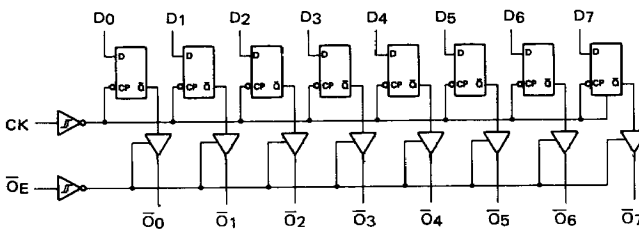
374



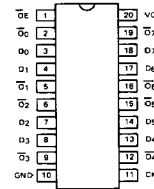
574



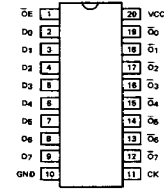
534, 564



534



564



373, 533, 563, 573 Function Table

OPERATING MODE	Inputs			Outputs	
	\overline{OE}	\overline{LE}	DN	373,573 ON	533,563 ON
Enable and Read Register	L	H	L	L	H
	L	H	H	H	\overline{L}
*Latch and Read Register	L	L	D_{IN}^{*1}	D	\overline{D}
Outputs Disable	H	X	X	Hi - Z	Hi - Z

D_{IN}^{*1} = Voltage level on input one set up time prior to High to Low transition on LE.

374, 534, 564, 574 Function Table

OPERATING MODE	Inputs			Outputs	
	\overline{OE}	CK	DN	374,574 ON	534,564 ON
Latch and Read Register	L	\uparrow	D_{IN}^{*2}	D	\overline{D}
*Latch Register and Output disable	H	\uparrow	D_{IN}^{*2}	Hi - Z	Hi - Z

D_{IN}^{*2} = Voltage level on input one set up time prior to Low to High transition on CK.

*Even though the outputs may be disabled the latch function of the device is still operational.