

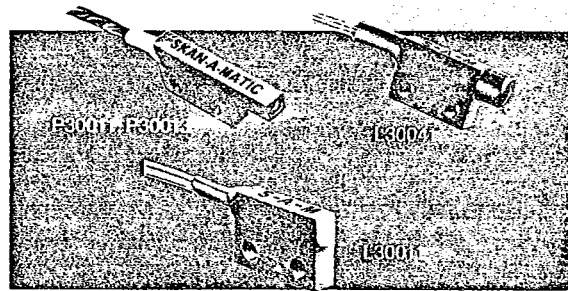
FASCO INDS/ SENISYS

40E D 3499738 0001394 4 SENI

## L30/P30 Series (Continued)

### Features:

- Rated Separation: 10 to 15 in.
- Beam Diameter: .06 to .12 in.
- Smallest Detectable Object: .02 to .04 in.
- Small size
- Interchangeability within series



### Description:

The L30/P30 Series is a family of compatible general purpose thru-beams. Any L30 light source may be used with any P30 photodetector. The units offer similar performance in a variety of body sizes, styles and materials. All units have metal housings, lenses and epoxy sealing.

Several L30/P30 Series models are available with several options such as protective sheathing and/or filters which block visible light.

Engineering specification will vary with the models actually used; refer to Model Selection Guide.

### Typical Applications:

- Parts counting
- Edge control
- Detection of small parts
- Web break

### Specifications: (at 25°C)

#### LIGHT SOURCE—LAMP

Input	5.0 VDC, 115 mA
BODY	Gold anodized aluminum
TEMPERATURE	Operating: 0° to 50°C Storage: -40° to 50°C
LEADS	2 cond. 24 ga., teflon covered cable, 2 ft. long, Type A

#### PHOTODETECTOR

Operating Voltage	30 VDC max.
Response Time	See Response Time Chart under <i>Technical Information</i>
Spectral Response	910 nm peak
FILTER (optional)	Transmits less than 5% at 750 nm and less than 0.1% at 700 nm
BODY	Gold anodized aluminum
TEMPERATURE	Operating: 0° to 50°C Storage: -40° to 50°C
LEADS	2 cond. 26 ga. teflon covered cable with shield, 2 ft. long, Type B

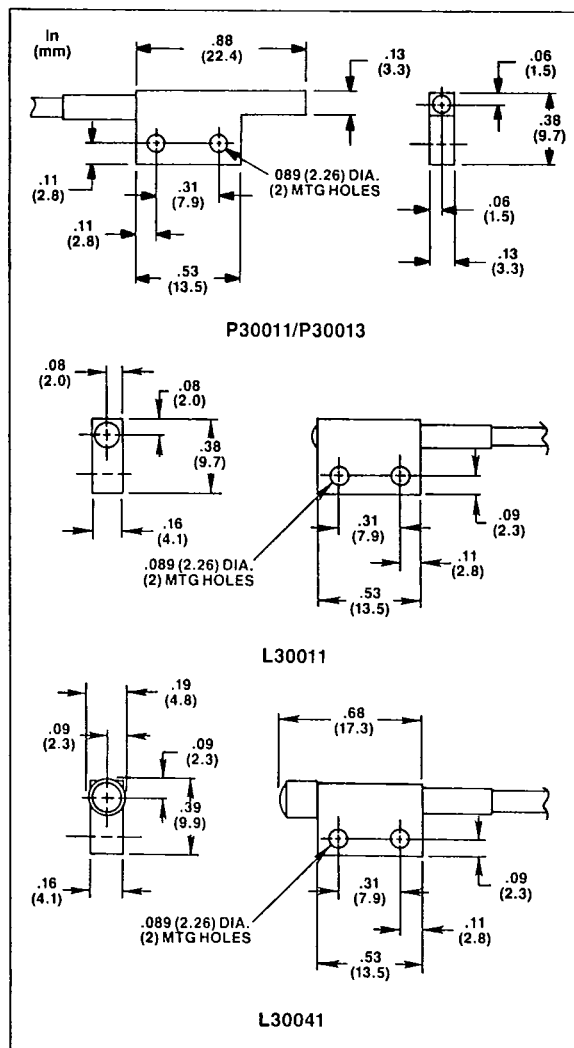
**SKANAMATIC**

A Senisys Company

## L30/P30 Series

T-41-61

### Dimensions:



### Model Selection Guide:

#### LIGHT SOURCE

Part #	Rated* Separation	Beam Diameter	Smallest Detectable Object
L30011	10"	.12"	.04"
L30041	15"	.12"	.04"

\*When used with P30 Photodetectors and Skan-A-Matic electronic controls.

#### PHOTODETECTOR

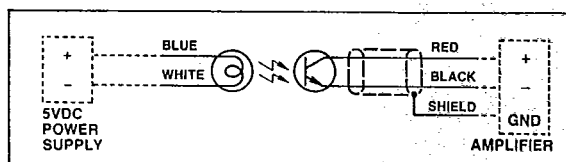
Part #	Filter	Beam Diameter	Smallest Detectable Object
P30011	No	.06"	.02"
P30013	Yes	.06"	.02"

### Variations:

#### LEADS

Extra lead lengths available. See pg. 123.

### Wiring Diagram:



### Compatibility With Controls:

The L30/P30 Series is compatible with all Skan-A-Matic controls except modulating controls which are used with LED light sources only. For high speed operation use the T41300 High Speed Amplifier.

**SKAN-A-MATIC®**

A Senisys Company  
Plano, Texas 75075