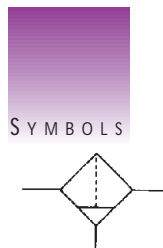
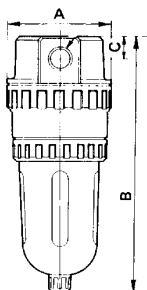


## HIGH FLOW AIR FILTER SERIES AF

- ✓ Port Sizes 1½"- 2" Rc
- ✓ 5µm filter element
- ✓ High efficiency drainage
- ✓ Bowl guard standard
- ✓ Stocked for overnight delivery

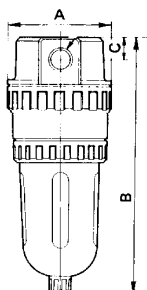


### DIMENSIONS AIR FILTER MODELS AF800/900



Model	A	B	C	Pipe size
AF800	150	410	33	1½"
AF900	200	488	46	2"

### DIMENSIONS AIR FILTER MODELS AF811/911



Model	A	B	C	Pipe size
AF811	150	439	33	1½"
AF911	200	519	46	2"

### TECHNICAL SPECIFICATIONS

	AF800	AF900
Pipe Size	1½"	2"
Max. flow rate (n/min)	9000	15000
Drain Capacity (cm³)	180	180
Max. operating pressure	9.9	
Ambient & fluid temp.	-5~+60°C	
Bowl	Polycarbonate with metal bowl guard	

Flows are for 0.7MPa supply, 0.01MPa pressure drop

### HOW TO ORDER AIR FILTER

AF800-14 (1½")  
AF900-20 (2")

**STOCKED PRODUCTS**  
FOR A LIST OF STOCKED PRODUCTS,  
PLEASE SEE THE CURRENT SMC PRICE LIST

### HOW TO ORDER AIR FILTER WITH AUTODRAIN

AF811-14 (1½")  
AF911-20 (2")

### ACCESSORIES AIR FILTER

Filter Elements  
11345-5B .....AF800  
11352-5B .....AF900

**STOCKED PRODUCTS**  
FOR A LIST OF STOCKED PRODUCTS,  
PLEASE SEE THE CURRENT SMC PRICE LIST



SEE INSIDE FRONT COVER FOR  
DETAILS OF YOUR LOCAL SALES OFFICE



FOR FURTHER TECHNICAL  
DETAILS ON THIS  
PRODUCT REQUEST  
CATALOGUE REFERENCE  
AND DISCUSS.



MIST SEPARATOR SERIES AM

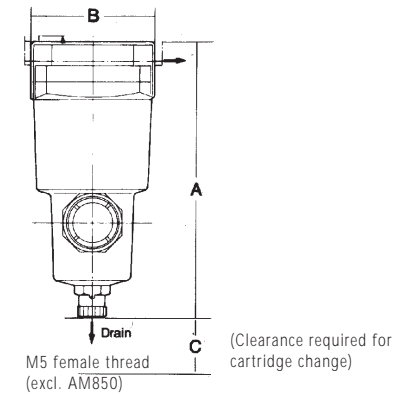
- ✓ Port sizes 1/4, 3/8, 1/2, 3/4, 1 1/2, 2"
- ✓ Removes 99.9% of oil mist and fine particles down to 0.3µm
- ✓ Manual or automatic drain
- ✓ Cartridge type element for easy replacement
- ✎ Small additional clearance required for cartridge replacement

Mist Separators are also available for the modular range of air preparation equipment - see page 5.9



Air Preparation

DIMENSIONS  
MIST SEPARATOR SERIES AM



Model	Port	A mm	B mm	C mm
AM150-02D	1/4	159	63	10
AM250-03D	3/8	172	76	10
AM350-04D	1/2	204	90	10
AM450-06D	3/4	225	106	10
AM550-10D	1"	259	122	10
AM650-14D	1 1/2"	361	160	10
AM850-20D	2"	473	220	10

Manual and autodrain types are same overall dimensions.

HOW TO ORDER  
MIST SEPARATOR SERIES AM

MANUAL DRAIN

AM150-02	1/4
AM250-03	3/8
AM350-04	1/2
AM450-06	3/4
AM550-10	1"
AM650-14	1 1/2
AM850-20	2"

AUTODRAIN

AM150-02D	1/4
AM250-03D	3/8
AM350-04D	1/2
AM450-06D	3/4
AM550-10D	1"
AM650-14D	1 1/2
AM850-20D	2"

STOCKED PRODUCTS  
FOR A LIST OF STOCKED PRODUCTS,  
PLEASE SEE THE CURRENT SMC PRICE LIST

TECHNICAL  
SPECIFICATIONS

Max. operating pressure	10 Bar
Min. operating pressure	Manual 0.5 Bar Autodrain 1.5 Bar
Ambient & fluid temp'	5-60°C
Filtration degree	0.3µm
Oil mist removal	99.9%
Max. flow rate rate l/min*	AM150 300
	AM250 750
	AM350 1500
	AM450 2,200
	AM550 3,500
	AM650 6,000
	AM850 12,000

\*7 bar supply, 0.3 bar or less pressure drop

ACCESSORIES

Bracket	
AM150	BM51
AM250	BM52
AM350	BM53
AM450	BM54
AM550	BM55
AM650	BM56
AM850	BM57
Filter element	
AM150	AM-EL150
AM250	AM-EL250
AM350	AM-EL350
AM450	AM-EL450
AM550	AM-EL550
AM650	AM-EL650
AM850	AM-EL850

STOCKED PRODUCTS  
FOR A LIST OF STOCKED PRODUCTS,  
PLEASE SEE THE CURRENT SMC PRICE LIST

SYMBOLS



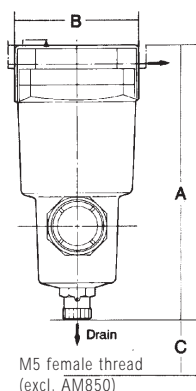
FOR FURTHER TECHNICAL  
DETAILS ON THIS  
PRODUCT REQUEST  
CATALOGUE REFERENCE  
AND DISCUSS.

## MICRO MIST SEPARATOR SERIES AMD

- ✓ Port sizes 1/4, 3/8, 1/2, 3/4, 1", 1 1/2, 2"
- ✓ Removes oil, water and dirt from compressed air
- ✓ 99.9999% efficient
- ✓ Particle removal down to 0.01µm
- ✓ Oil carry-over less than 0.08 p.p.m.
- ✓ Cartridge type element for easy replacement
- ✎ Small additional clearance required for cartridge replacement



### DIMENSIONS MIST SEPARATOR SERIES AMD



M5 female thread  
(excl. AM850)

(Clearance required for  
cartridge change)

Model	Port	A mm	B mm	C mm
AMD150-02	1/4"	159	63	10
AMD250-03	3/8"	172	76	10
AMD350-04	1/2"	204	90	10
AMD450-06	3/4"	225	106	10
AMD550-10	1"	259	122	10
AMD650-14	1 1/2"	361	160	10
AMD850-20	2"	473	220	10

Manual and autodrain types are  
same overall dimensions.

### SYMBOLS



### HOW TO ORDER MIST SEPARATOR SERIES AMD

#### MANUAL DRAIN

AMD150-02	1/4"
AMD250-03	3/8"
AMD350-04	1/2"
AMD450-06	3/4"
AMD550-10	1"
AMD650-14	1 1/2"
AMD850-20	2"

#### AUTO DRAIN

AMD150-02D	1/4"
AMD250-03D	3/8"
AMD350-04D	1/2"
AMD450-06D	3/4"
AMD550-10D	1"
AMD650-14D	1 1/2"
AMD850-20D	2"

### STOCKED PRODUCTS

FOR A LIST OF STOCKED PRODUCTS,  
PLEASE SEE THE CURRENT SMC PRICE LIST

### TECHNICAL SPECIFICATIONS

Max. operating pressure	1.0MPa
Minimum operating pressure	Manual 0.05MPa Autodrain 0.15MPa
Ambient and fluid temperatures	5 - 60°C
Filtration degree	0.01µm
Oil mist removal	99.9%
Max. flow rate rate l/min*	AMD150 - 200 AMD250 - 250 AMD350 - 1000 AMD450 - 2000 AMD550 - 3500 AMD650 - 6000 AMD850 - 12000

\*0.7MPa supply, 0.02MPa pressure drop

### ACCESSORIES

#### MIST SEPARATOR SERIES AMD

##### Brackets

AMD150	BM51
AMD250	BM52
AMD350	BM53
AMD450	BM54
AMD550	BM55
AMD650	BM56
AMD850	BM57

##### Filter element

AMD150	AMD-EL150
AMD250	AMD-EL250
AMD350	AMD-EL350
AMD450	AMD-EL450
AMD550	AMD-EL550
AMD650	AMD-EL650
AMD850	AMD-EL850

### STOCKED PRODUCTS

FOR A LIST OF STOCKED PRODUCTS,  
PLEASE SEE THE CURRENT SMC PRICE LIST



SEE INSIDE FRONT COVER FOR  
DETAILS OF YOUR LOCAL SALES OFFICE



FOR FURTHER TECHNICAL  
DETAILS ON THIS  
PRODUCT REQUEST  
CATALOGUE REFERENCE  
AND DISCUSS.

## MICRO MIST SEPARATOR WITH BUILT-IN PREFILTER SERIES AMH

- ✓ Two combined units
- ✓ Reduced installation and cost
- ✓ Reduced initial cost
- ✓ Reduced mounting space
- ✓ Filtration rate of 0.01µm (95% particle size collectio)
- ✓ Oil mist separated and eliminated down to 0.008ppm (0.01 mgf/m<sup>3</sup> ANR) or less before the filter element is oil saturated and 0.08ppm (0.1 mgf/m<sup>3</sup> ANR) or less after the filter element is saturated
- ✓ Available with drain cock (M5 female thread upto AMH650) or with normally open autodrain (1/4" female thread)

### APPLICATION

Suitable for cleaning air that is supplying pneumatic measuring instruments (air micrometers) and precision parts.

### SYMBOLS

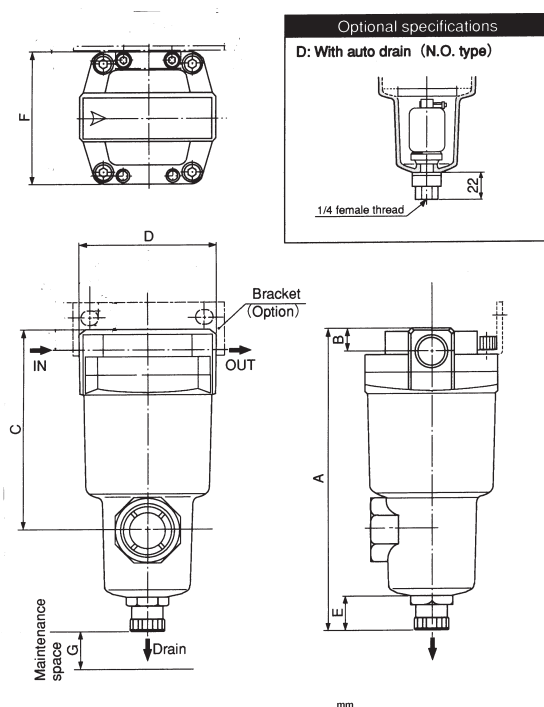


### TECHNICAL SPECIFICATIONS

Fluid	Compressed Air	
Min/Max Operating Pressure	Manual: 0.05-1.0MPa Autodrain: 0.15-1.0MPa	
Ambient & Fluid Temperature	5-60°C	
Element Life	2 years or when pressure drop reaches 0.1MPa	
Air Flow Rate l/min	AMH150	200
	AMH250	500
	AMH350	1000
	AMH450	2000
	AMH550	3500
	AMH650	6000
	AMH850	12000

At atmospheric pressure of 20°C and relative humidity of 65%

### DIMENSIONS SERIES AMH



### How To ORDER SERIES AMH

#### MANUAL DRAIN

AMH150-02	1/4
AMH250-03	3/8
AMH350-04	1/2
AMH450-06	3/4
AMH550-10	1"
AMH650-14	1 1/2
AMH850-20	2

#### AUTODRAIN

AMH150-02D	1/4
AMH250-03D	3/8
AMH350-04D	1/2
AMH450-06D	3/4
AMH550-10D	1"
AMH650-14D	1 1/2
AMH850-20D	2"

**STOCKED PRODUCTS**  
FOR A LIST OF STOCKED PRODUCTS,  
PLEASE SEE THE CURRENT SMC PRICE LIST

### ACCESSORIES SERIES AMH

Model	Brackets Assembly	Elements Assembly
AMH150	BM51	AMH-EL150
AMH250	BM52	AMH-EL250
AMH350	BM53	AMH-EL350
AMH450	BM54	AMH-EL450
AMH550	BM55	AMH-EL550
AMH650	BM56	AMH-EL650
AMH850	BM57	AMH-EL850

Model	Piping port size	A	B	C	D	E	F	G
AMH150	1/8, 1/4, 3/8	159	13	100	63	20	63	10
AMH250	1/4, 3/8	172	13	113	76	20	76	10
AMH350	1/2	178	16	119	90	20	90	10
AMH450	3/8, 1/2	204	16	145	106	20	106	10
AMH550	3/4	210	19	151	122	20	122	10
AMH650	1 1/2	232	22	172	160	20	160	10
AMH850	2	259	22	200	220	70	220	10



FOR FURTHER TECHNICAL  
DETAILS ON THIS  
PRODUCT REQUEST  
CATALOGUE REFERENCE  
AND DISCUSS.



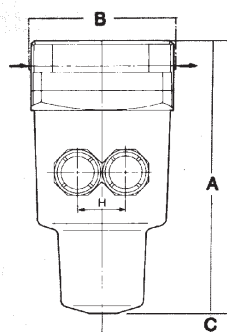
## ODOUR REMOVAL FILTER SERIES AMF

- ✓ Port sizes 1/4, 3/8, 1/2, 3/4, 1", 1 1/2, 2"
- ✓ Activated carbon filter element with large filtration area (1420 m<sup>2</sup>/g) for the removal of hydrocarbon and organic vapours
- ✓ 99.9999% efficient
- ✓ Particle removal down to 0.01µm
- ✓ Cartridge type element for easy replacement
- ✎ Small additional clearance required for cartridge replacement



### DIMENSIONS

#### ODOUR REMOVAL FILTER SERIES AMF



(Clearance required for cartridge change)

### TECHNICAL SPECIFICATIONS

Media	Compressed air -use SMC AMD micro-mist separator upstream
Operating pressure	0.05 - 1.0 MPa
Operating temperature	5 - 60°C
Max. flow rate /n/min*	AMF150 - 200 AMF250 - 500 AMF350 - 1000 AMF450 - 2000 AMF550 - 3500 AMF650 - 6000 AMF850-12000

\*0.7MPa supply, 0.015MPa pressure drop

### SYMBOLS



Model	Port	A mm	B mm	C mm
AMF150-02	1/4"	139	63	10
AMF250-03	3/8"	152	76	10
AMF350-04	1/2"	184	90	10
AMF450-06	3/4"	205	106	10
AMF550-10	1"	239	122	10
AMF650-14	1 1/2"	321	160	10
AMF850-20	2"	403	220	10

### HOW TO ORDER

#### ODOUR REMOVAL FILTER SERIES AMF

AMF150-02	1/4"
AMF250-03	3/8"
AMF350-04	1/2"
AMF450-06	3/4"
AMF550-10	1"
AMF650-14	1 1/2"
AMF850-20	2"

### STOCKED PRODUCTS

FOR A LIST OF STOCKED PRODUCTS, PLEASE SEE THE CURRENT SMC PRICE LIST

### ACCESSORIES

#### ODOUR REMOVAL FILTER SERIES AMF

Bracket	
AMF150	.....BM51
AMF250	.....BM52
AMF350	.....BM53
AMF450	.....BM54
AMF550	.....BM55
AMF650	.....BM56
AMF850	.....BM57
Filter element	
AMF150	.....AMF-EL150
AMF250	.....AMF-EL250
AMF350	.....AMF-EL350
AMF450	.....AMF-EL450
AMF550	.....AMF-EL550
AMF650	.....AMF-EL650
AMF850	.....AMF-EL850

### STOCKED PRODUCTS

FOR A LIST OF STOCKED PRODUCTS, PLEASE SEE THE CURRENT SMC PRICE LIST



SEE INSIDE FRONT COVER FOR  
DETAILS OF YOUR LOCAL SALES OFFICE



FOR FURTHER TECHNICAL  
DETAILS ON THIS  
PRODUCT REQUEST  
CATALOGUE REFERENCE  
AND DISCUSS.

## WATER SEPARATOR SERIES AMG

- ✓ Port sizes 1/4, 3/8, 1/2, 3/4, 1, 1 1/2, 2"
- ✓ Removes 99.9% of water droplets
- ✓ Automatic drain as standard
- ✓ Element is resistant to clogging
- ✎ Small additional clearance required for cartridge replacement

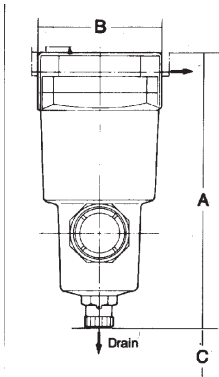
## APPLICATIONS

- ✓ Use where an electric air dryer is not required but water should be removed
- ✓ Use where an air dryer cannot be used due to power supply, expense or space
- ✓ AMG range can be used with compressors of 0.75-75kW(1-100Hp)



## DIMENSIONS

## WATER SEPARATOR SERIES AMG

(Clearance required for  
cartridge change)

Model	Port	A mm	B mm	C mm
AMG150	1/4	170	63	10
AMG250	3/8	191	76	10
AMG350	1/2	220	90	10
AMG450	3/4	241	106	10
AMG550	1	279	122	10
AMG650	1 1/2	388	160	10
AMG850	2	479	220	10

HOW TO  
ORDER

## WATER SEPARATOR SERIES AMG

AUTO DRAIN	Normally Open
AMG150-02D	1/4
AMG250-03D	3/8
AMG350-03D	3/8
AMG350-04D	1/2
AMG450-06D	3/4
AMG550-10D	1
AMG650-14D	1 1/2
AMG850-20D	2

## STOCKED PRODUCTS

FOR A LIST OF STOCKED PRODUCTS,  
PLEASE SEE THE CURRENT SMC PRICE LIST

## ACCESSORIES

Bracket	
AMG150	BM51
AMG250	BM52
AMG350	BM53
AMG450	BM54
AMG550	BM55
AMG650	BM56
AMG850	BM57

## STOCKED PRODUCTS

FOR A LIST OF STOCKED PRODUCTS,  
PLEASE SEE THE CURRENT SMC PRICE LISTTECHNICAL  
SPECIFICATIONS

Max. operating pressure	1.0MPa														
Min. operating pressure	0.15MPa														
Ambient & fluid temp'	5-60°C														
Max. flow rate rate l/min*	<table> <tr> <td>AMG150</td><td>300</td></tr> <tr> <td>AMG250</td><td>750</td></tr> <tr> <td>AMG350</td><td>1500</td></tr> <tr> <td>AMG450</td><td>2200</td></tr> <tr> <td>AMG550</td><td>3500</td></tr> <tr> <td>AMG650</td><td>6000</td></tr> <tr> <td>AMG850</td><td>12000</td></tr> </table>	AMG150	300	AMG250	750	AMG350	1500	AMG450	2200	AMG550	3500	AMG650	6000	AMG850	12000
AMG150	300														
AMG250	750														
AMG350	1500														
AMG450	2200														
AMG550	3500														
AMG650	6000														
AMG850	12000														

\*0.7MPa supply, 0.03MPa or less pressure drop  
 Note: if air supply is 300l/min ANR or less then  
 specify a normally closed autodrain version.  
 (suffix C eg: AMCG350-04C)

## SYMBOLS



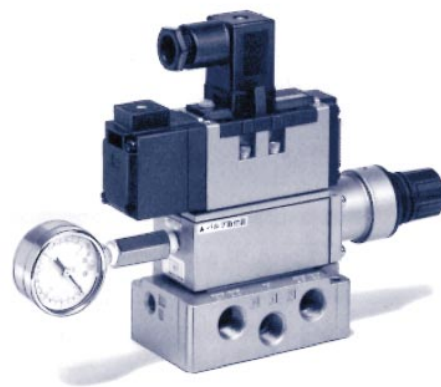
FOR FURTHER TECHNICAL  
 DETAILS ON THIS  
 PRODUCT REQUEST  
 CATALOGUE REFERENCE  
 AND DISCUSS.



### INTERFACE REGULATOR FOR ISO VALVES SERIES ARB250/350

FOR FURTHER DETAILS, REFER TO THE VALVE SECTION

- ✓ Sub base or manifold mounting
- ✓ ISO 1 and ISO 2 types available
- ✓ Regulated port options



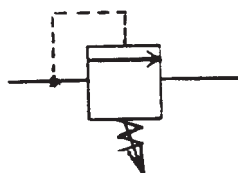
### PRESSURE CONTROL VALVE

The AP Series pressure control valve is an adjustable valve with a control range of 0.05 to 0.7MPa. If a pressure, greater than the set pressure, is reached, the unit will open, closing when pressure is less than set pressure.

#### TECHNICAL SPECIFICATIONS

Characteristics	AP100
Port size	1/8" (01), 1/4" (02)
Max. operating pressure	1.0MPa
Relieving range	0.05-0.7MPa
Temperature range	5 - 60°C
Body material	Aluminium die cast

#### SYMBOLS



#### HOW TO ORDER

SERIES AP100

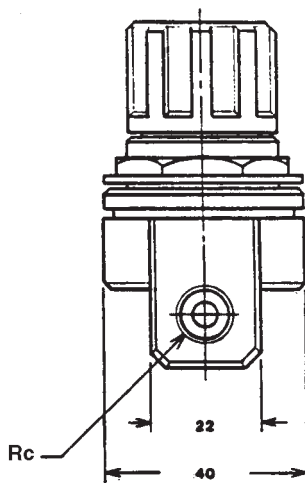
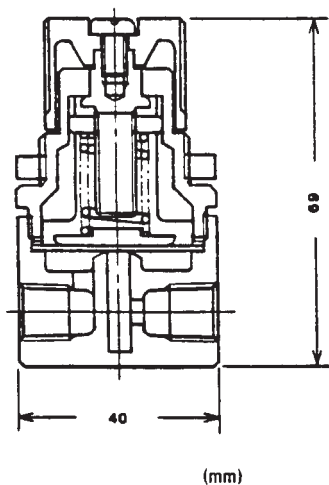
AP100 —

PORT SIZE

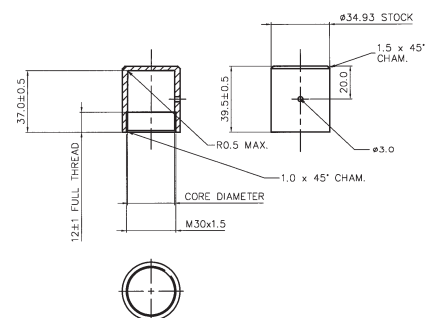
- 01 ... 1/8"
- 02 ... 1/4"

**STOCKED PRODUCTS**  
FOR A LIST OF STOCKED PRODUCTS,  
PLEASE SEE THE CURRENT SMC PRICE LIST

#### DIMENSIONS AP SERIES



#### DIMENSIONS TAMPER PROOF CAP



#### ACCESSORIES SERIES AP100

Bracket ..... B21-1P  
Tamper proof cap ..... UKA355-9

**STOCKED PRODUCTS**  
FOR A LIST OF STOCKED PRODUCTS,  
PLEASE SEE THE CURRENT SMC PRICE LIST



SEE INSIDE FRONT COVER FOR  
DETAILS OF YOUR LOCAL SALES OFFICE



FOR FURTHER TECHNICAL  
DETAILS ON THIS  
PRODUCT CONTACT  
YOUR LOCAL REGIONAL  
CENTRE

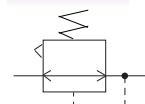
PRESSURE REGULATOR  
PILOT ASSISTED

- ✓ Compact, lightweight construction
- ✓ High flow capacity
- ✓ Stable accurate pressure control
- ✓ Stocked for overnight delivery
- ✓ Remote pilot operation available

TECHNICAL  
SPECIFICATIONS

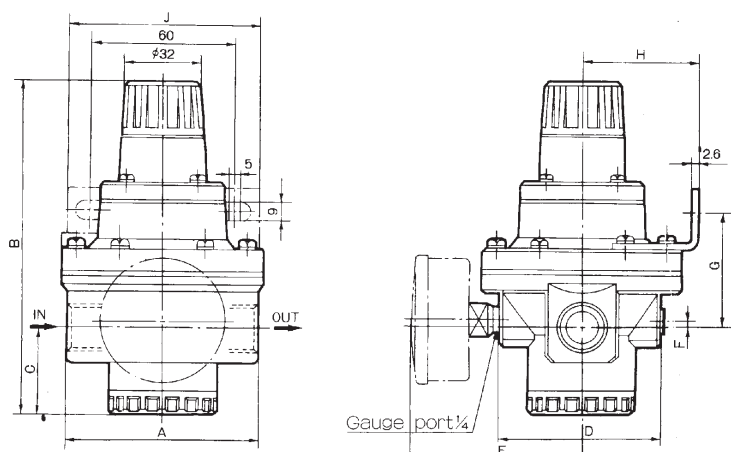
Pressure Regulating Range (Bar)	0.5 ~ 8.5	AR425	AR625	AR825	AR925
Pipe Size		1/4 3/8 1/2	3/4 1	1 1/2	2
Flow Rate /n/min 7bar supply, 1 bar pressure drop		8,000	14,000	18,000	22,000

## SYMBOLS



## DIMENSIONS

## PILOT OPERATED PRESSURE REGULATOR



Model	A	B	C	D	E	F	Bracket Dimensions			Bracket No.
							G	H	J	
AR425	80	141	37	67	71 (72)	3	50	48	80	B24
AR625	98	152	40	78	76.5 (77.5)	7	87	52	90	B25
AR825	126	217	75	110	92.5 (93.5)	5	-	-	-	-
AR925	160	242	89	140	107.5 (108.5)	10	-	-	-	-

HOW TO  
ORDER

## PILOT OPERATED PRESSURE REGULATOR

AR425-02 (1/4)

AR425-03 (3/8)

AR425-04 (1/2)

AR625-06 (3/4)

AR625-10 (1)

AR825-14 (1 1/2)

AR925-20 (2)

For remote pilot type add suffix (UKA002)

## STOCKED PRODUCTS

FOR A LIST OF STOCKED PRODUCTS,  
PLEASE SEE THE CURRENT SMC PRICE LIST

## ACCESSORIES

## PILOT OPERATED PRESSURE REGULATOR

Mounting Bracket

B24 .....AR425

B25 .....AR625

Gauges: see Gauges in this section  
of the catalogue

## STOCKED PRODUCTS

FOR A LIST OF STOCKED PRODUCTS,  
PLEASE SEE THE CURRENT SMC PRICE LISTFOR FURTHER TECHNICAL  
DETAILS ON THIS  
PRODUCT REQUEST  
CATALOGUE REFERENCE  
AND DISCUSS.



## MINIATURE REGULATOR ARJ1020F

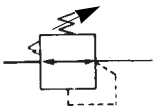
- ✓ Compact design
- ✓ Piston construction offers high frequency and long life
- ✓ One touch tube connection
- ✓ Panel mount



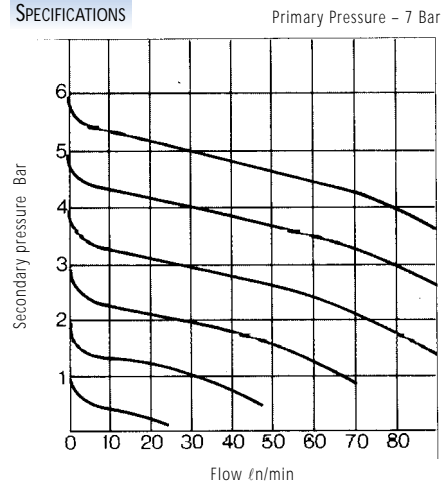
### TECHNICAL SPECIFICATIONS

Model	ARJ1020F
Media	Air
Operating pressure	1-7 Bar
Max. pressure	8 Bar
Temperature	-5-+60°C
Piping	IN M5X0.8 male
	OUT Ø4, Ø6

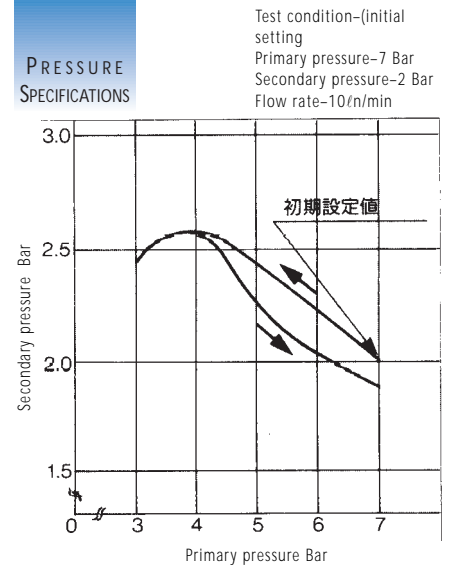
### SYMBOLS



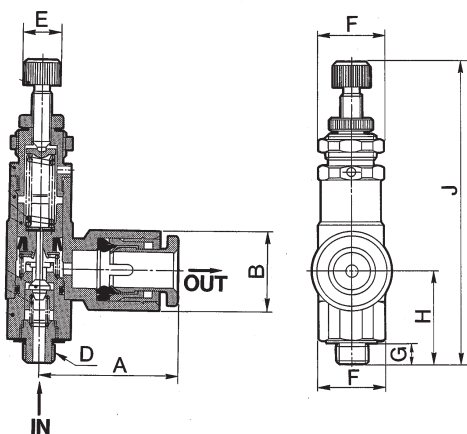
### FLOW SPECIFICATIONS



### PRESSURE SPECIFICATIONS



### DIMENSIONS SERIES ARJ



Panel mount dimension



### HOW TO ORDER

MINIATURE REGULATOR ARJ1020F

ARJ1020F — M5 —

04 ...4mm tube  
06 ...6mm tube  
M5...M5X0.8

### STOCKED PRODUCTS

FOR A LIST OF STOCKED PRODUCTS,  
PLEASE SEE THE CURRENT SMC PRICE LIST

Model	A	B	C	D	E	F	G	H	J
ARJ1020F-M5-04	21	10.4	4	M5X0.8	6	10.6	3.5	15.5	50
ARJ1020F-M5-06	22	12.8	6						



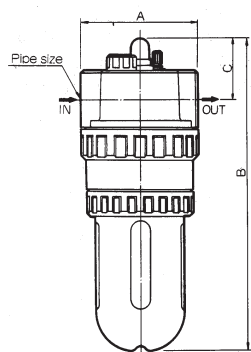
SEE INSIDE FRONT COVER FOR  
DETAILS OF YOUR LOCAL SALES OFFICE



FOR FURTHER TECHNICAL  
DETAILS ON THIS  
PRODUCT CONTACT  
YOUR LOCAL REGIONAL  
CENTRE

## LUBRICATOR SERIES AL OIL MIST TYPE

- ✓ Port Sizes 1½-2
- ✓ Atomises lubricant into fine particles at a uniform rate
- ✓ Drip rate easily monitored with sight dome
- ✓ Can be filled under pressure
- ✓ Bowl guard standard
- ✓ Damper prevents oil flooding
- ✓ Suitable for high air flow rate application with oil travel to approx. 5metres
- ✓ Stocked for overnight delivery
- ✓ Built-in oil check valve prevents oil from falling back into the bowl when air flow stops thus preventing dry running periods



Model	A	B	C	Pipe Size
AL800	100	283	59	1½
AL900	100	288	63	2



### HOW TO ORDER LUBRICATOR

AL800-14 (1½)  
AL900-20 (2)

**STOCKED PRODUCTS**  
FOR A LIST OF STOCKED PRODUCTS,  
PLEASE SEE THE CURRENT SMC PRICE LIST

### TECHNICAL SPECIFICATIONS

	AL800	AL900
Max. supply pressure	1.5MPa	
Max. operating pressure	1.0MPa	
Operating temp' range	-5~+60°C	
Recommended lubricant	Turbine oil #1 (ISO VG32)	
Bowl	Polycarbonate with metal bowl guard	
Pipe size	1½	2
Min. flow for oil drip	650 nl/min	1800 nl/min
Oil capacity (cm3)	500	500
Flow rate /nl/min	12500	16500

Flow rate quoted at: 0.5MPa supply  
0.03 MPa pressure drop

## For centralised micromist lubrication...

to ring mains and large single branch lines, see Jet Lube Series ALDU  
and Booster Lube Series ALB in this section of the catalogue.



FOR FURTHER TECHNICAL  
DETAILS ON THIS  
PRODUCT REQUEST  
CATALOGUE REFERENCE  
AND DISCUSS.