

- 1 **For simple and quick connection of pneumatic circuits**
- 1 **Neat, compact design**
- 1 **Precision machined for complete reliability**
- 1 **Corrosion resistant, nickel plated**

**Technical Data****Medium:**

Compressed air

Operating Pressure:Vacuum - 15 bar
Dependent upon tube.**Operating Temperature:**-18°C to +70°C
Dependent upon tube.**Suitable Tube Sizes**4/2.5mm, 5/3mm, 6/4mm, Polyurethane
8/6mm, 10/8mm, 12/10mm, 15/12.5mm Extraflexible Nylon**Tubing Type:**

Polyurethane, Nylon 11*

*Consult our Technical Service for use with any other tubing.

Materials

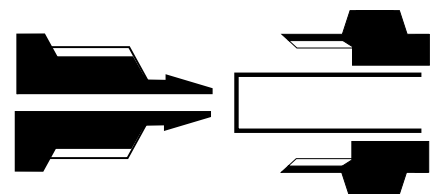
Nut & body are nickel plated brass

'O' ring to NBR 70

Sealing washers - polyamide 66

Ordering Information

To order, quote appropriate product number from the tables on the following pages.





Straight Adaptors and Connectors

| | | | | | | |
|---------------------------------------------------------------------------------------|------------------------------------------------------------------------------------------|------------------------------------------------------------------------------------------------|-------------------------------------------------------------------------------|----------------------------------------------------------------------|---------------------------------------------------------------------------------------|--|
| <p>STRAIGHT MALE ADAPTOR taper BSP</p> <p>24125</p> <p>Page 9.5.001.03</p> | <p>STRAIGHT MALE ADAPTOR parallel BSP</p> <p>24225</p> <p>Page 9.5.001.03</p> | <p>STRAIGHT MALE ADAPTOR with metric thread</p> <p>24225</p> <p>Page 9.5.001.03</p> | <p>STRAIGHT FEMALE BSP ADAPTOR</p> <p>24226</p> <p>Page 9.5.001.03</p> | <p>STRAIGHT CONNECTOR</p> <p>24020</p> <p>Page 9.5.001.04</p> | <p>BULKHEAD CONNECTOR tube to tube</p> <p>24029</p> <p>Page 9.5.001.04</p> | |
|---------------------------------------------------------------------------------------|------------------------------------------------------------------------------------------|------------------------------------------------------------------------------------------------|-------------------------------------------------------------------------------|----------------------------------------------------------------------|---------------------------------------------------------------------------------------|--|

Elbow Connectors and Adaptors

| | | | | | | |
|------------------------------------------------------------------------------------|----------------------------------------------------------------------------|-------------------------------------------------------------------|------------------------------------------------------------------------|------------------------------------------------------------------------|--|--|
| <p>ELBOW MALE ADAPTOR taper BSP</p> <p>24145</p> <p>Page 9.5.001.04</p> | <p>ELBOW FEMALE BSP ADAPTOR</p> <p>24246</p> <p>Page 9.5.001.04</p> | <p>ELBOW CONNECTOR</p> <p>24040</p> <p>Page 9.5.001.04</p> | <p>SWIVEL ELBOW ADAPTOR</p> <p>24247</p> <p>Page 9.5.001.04</p> | <p>ELBOW BANJO ASSEMBLY</p> <p>24A51</p> <p>Page 9.5.001.08</p> | | |
|------------------------------------------------------------------------------------|----------------------------------------------------------------------------|-------------------------------------------------------------------|------------------------------------------------------------------------|------------------------------------------------------------------------|--|--|

TEE Connectors and Adaptors

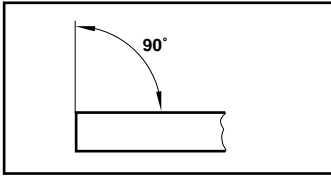
| | | | | | | |
|-----------------------------------------------------------------------------------------------|------------------------------------------------------------------------------------------------|-----------------------------------------------------------------|-------------------------------------------------------------------------|----------------------------------------------------------------------|--|--|
| <p>TEE MALE BSP ADAPTOR taper - centre leg</p> <p>24165</p> <p>Page 9.5.001.05</p> | <p>TEE MALE BSP ADAPTOR taper - off set leg</p> <p>24175</p> <p>Page 9.5.001.05</p> | <p>TEE CONNECTOR</p> <p>24060</p> <p>Page 9.5.001.05</p> | <p>EQUAL CROSS CONNECTOR</p> <p>24090</p> <p>Page 9.5.001.05</p> | <p>TEE BANJO ASSEMBLY</p> <p>24A71</p> <p>Page 9.5.001.08</p> | | |
|-----------------------------------------------------------------------------------------------|------------------------------------------------------------------------------------------------|-----------------------------------------------------------------|-------------------------------------------------------------------------|----------------------------------------------------------------------|--|--|

Banjo Bodies and Bolts & Accessories

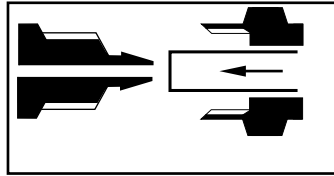
| | | | | | | |
|-----------------------------------------------------------------------------------|---------------------------------------------------------------------------------------------------|----------------------------------------------------------------------------------------------|---------------------------------------------------------------------------------------------------|---------------------------------------------------------------------------------------------|-----------------------------------------------------------------------------------|-----------------------------------------------------------------------------------|
| <p>SINGLE BANJO BODY</p> <p>24051</p> <p>Page 9.5.001.05</p> | <p>DOUBLE BANJO BODY</p> <p>24071</p> <p>Page 9.5.001.05</p> | <p>BANJO STEM SINGLE short bolt</p> <p>24A00</p> <p>Page 9.5.001.06</p> | <p>BANJO STEM DOUBLE short bolt</p> <p>24B00</p> <p>Page 9.5.001.06</p> | <p>BANJO STEM TRIPLE short bolt</p> <p>24C00</p> <p>Page 9.5.001.06</p> | <p>BANJO STEM SINGLE long bolt</p> <p>24A00</p> <p>Page 9.5.001.06</p> | <p>BANJO STEM DOUBLE long bolt</p> <p>24B00</p> <p>Page 9.5.001.06</p> |
| <p>BANJO STEM TRIPLE long bolt</p> <p>24C00</p> <p>Page 9.5.001.06</p> | <p>BANJO FLOW REGULATOR screwdriver regulation</p> <p>24K51</p> <p>Page 9.5.001.07</p> | <p>BANJO FLOW REGULATOR regulating out bolt</p> <p>24K</p> <p>Page 9.5.001.07</p> | <p>BANJO FLOW REGULATOR bi-directional flow bolt</p> <p>24M</p> <p>Page 9.5.001.07</p> | <p>BANJO FLOW REGULATOR regulating in bolt</p> <p>24L</p> <p>Page 9.5.001.07</p> | <p>TUBING NUT</p> <p>24001</p> <p>Page 9.5.001.08</p> | <p>PLUG</p> <p>24005</p> <p>Page 9.5.001.08</p> |



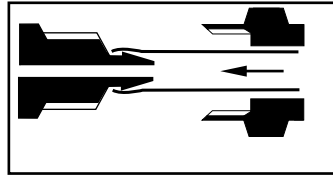
Method of Assembly



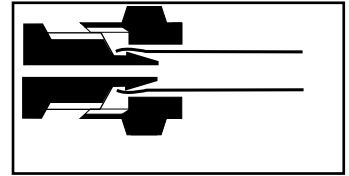
1. Ensure that the end of the tube is cut square and is free from burrs.



2. Place the knurled nut over the tube.



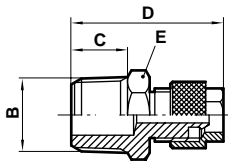
3. Push the tube over the barbed end of the fitting up to the tube stop.



4. Screw the knurled nut onto the fitting until finger tight. The hexagon on the nut is to aid release.

Straight Male Adaptor

Tube to male taper
BSP thread

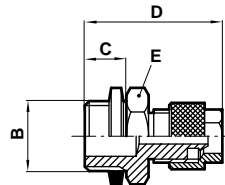


24125

| Product number | For use with tube OD/ID | B | C | D | E A/F |
|----------------|-------------------------|-----|------|------|----------|
| 241250418 | 4/2,5 | 1/8 | 7,5 | 23,0 | 12 |
| 241250518 | 5/3 | 1/8 | 7,5 | 23,0 | 12 |
| 241250618 | 6/4 | 1/8 | 7,5 | 25,6 | 12 |
| 241250628 | 6/4 | 1/4 | 11,0 | 29,6 | 14 |
| 241250638 | 6/4 | 3/8 | 11,5 | 30,0 | 17 |
| 241250818 | 8/6 | 1/8 | 7,5 | 26,9 | 14 |
| 241250828 | 8/6 | 1/4 | 11,0 | 30,9 | 14 |
| 241250838 | 8/6 | 3/8 | 11,5 | 31,4 | 17 |
| 241250848 | 8/6 | 1/2 | 14,0 | 34,0 | 22 |
| 241251018 | 10/8 | 1/8 | 7,5 | 29,0 | 14 |
| 241251028 | 10/8 | 1/4 | 11,0 | 33,0 | 14 |
| 241251038 | 10/8 | 3/8 | 11,5 | 33,5 | 17 |
| 241251048 | 10/8 | 1/2 | 14,0 | 36,5 | 22 |
| 241251238 | 12/10 | 3/8 | 11,5 | 35,0 | 17 |
| 241251248 | 12/10 | 1/2 | 14,0 | 38,0 | 22 |
| 241251548 | 15/12,5 | 1/2 | 14,0 | 40,0 | 22 |

Straight Male Adaptor

Tube to male BSP
Parallel thread



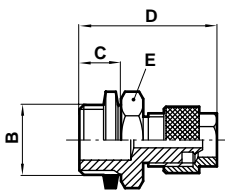
24225

| Product number | For use with tube OD/ID | B | C | D | E A/F |
|----------------|-------------------------|-----|----|------|----------|
| 242250418 | 4/2,5 | 1/8 | 6 | 21,5 | 13 |
| 242250518 | 5/3 | 1/8 | 6 | 24,1 | 13 |
| 242250618 | 6/4 | 1/8 | 6 | 24,1 | 13 |
| 242250628 | 6/4 | 1/4 | 8 | 26,6 | 17 |
| 242250638 | 6/4 | 3/8 | 9 | 27,6 | 19 |
| 242250648 | 6/4 | 1/2 | 10 | 30,0 | 24 |
| 242250818 | 8/6 | 1/8 | 6 | 25,4 | 14 |
| 242250828 | 8/6 | 1/4 | 8 | 27,9 | 17 |
| 242250838 | 8/6 | 3/8 | 9 | 28,9 | 19 |
| 242250848 | 8/6 | 1/2 | 10 | 30,0 | 24 |
| 242251018 | 10/8 | 1/8 | 6 | 27,5 | 14 |
| 242251028 | 10/8 | 1/4 | 8 | 30,0 | 17 |
| 242251038 | 10/8 | 3/8 | 9 | 31,0 | 19 |
| 242251048 | 10/8 | 1/2 | 10 | 32,5 | 24 |
| 242251238 | 12/10 | 3/8 | 9 | 32,5 | 19 |
| 242251248 | 12/10 | 1/2 | 10 | 34,0 | 24 |
| 242251548 | 15/12,5 | 1/2 | 10 | 36,0 | 24 |

Supplied complete with sealing washer

Straight Male Adaptor

Tube to male metric thread



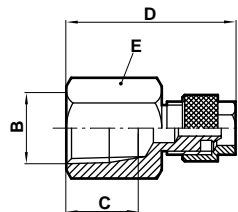
24225

| Product number | For use with tube OD/ID | B | C | D | E A/F |
|----------------|-------------------------|----|---|------|----------|
| 242250405 | 4/2,5 | M5 | 4 | 19,5 | 8 |
| 242250505 | 5/3 | M5 | 4 | 22,1 | 8 |
| 242250605 | 6/4 | M5 | 4 | 22,1 | 8 |

Supplied complete with sealing washer

Straight Female Adaptor

Tube to female BSP
parallel thread



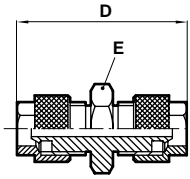
24226

| Product number | For use with tube OD/ID | B | C | D | E A/F |
|----------------|-------------------------|-----|------|------|----------|
| 242260618 | 6/4 | 1/8 | 7,5 | 23,3 | 14 |
| 242260628 | 6/4 | 1/4 | 11,0 | 27,0 | 17 |
| 242260638 | 6/4 | 3/8 | 11,5 | 28,0 | 22 |
| 242260818 | 8/6 | 1/8 | 7,5 | 24,7 | 14 |
| 242260828 | 8/6 | 1/4 | 11,0 | 28,7 | 17 |
| 242260838 | 8/6 | 3/8 | 11,5 | 29,2 | 22 |
| 242260848 | 8/6 | 1/2 | 15,0 | 33,0 | 24 |
| 242261028 | 10/8 | 1/4 | 11,0 | 30,5 | 17 |
| 242261038 | 10/8 | 3/8 | 11,5 | 33,3 | 22 |
| 242261048 | 10/8 | 1/2 | 15,0 | 34,5 | 24 |



Straight Connector

Tube to tube

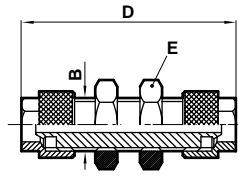


24020

| Product number | For use with tube OD/ID | tube | D | E A/F |
|----------------|-------------------------|------|------|-------|
| 240200400 | 4/2,5 | | 27,5 | 8 |
| 240200500 | 5/3 | | 31,7 | 10 |
| 240200605 | 6/4 | 5/3 | 32,2 | 12 |
| 240200600 | 6/4 | | 32,2 | 12 |
| 240200806 | 8/6 | 6/4 | 33,5 | 12 |
| 240200800 | 8/6 | | 34,8 | 12 |
| 240201000 | 10/8 | | 39,0 | 14 |
| 240201200 | 12/10 | | 43,0 | 17 |
| 240201500 | 15/12,5 | | 47,0 | 22 |

Bulkhead Connector

Tube to tube

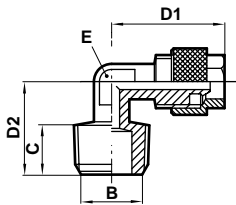


24029

| Product number | For use with tube OD/ID | B | D | E A/F |
|----------------|-------------------------|---------|------|-------|
| 240290400 | 4/2,5 | M6x0,5 | 39,6 | 9 |
| 240290500 | 5/3 | M7x0,75 | 39,6 | 9 |
| 240290605 | 6/4 x 5/3 | M10x1 | 45,5 | 14 |
| 240290600 | 6/4 | M10x1 | 45,5 | 14 |
| 240290806 | 8/6x 6/4 | M12x1 | 47,3 | 17 |
| 240290800 | 8/6 | M12x1 | 48,4 | 17 |
| 240291000 | 10/8 | M14x1 | 54,0 | 17 |
| 240291200 | 12/10 | M16x1 | 57,0 | 19 |
| 240291500 | 15/12,5 | M20x1 | 59,0 | 24 |

Elbow Male Adaptor

Tube to male taper BSP thread

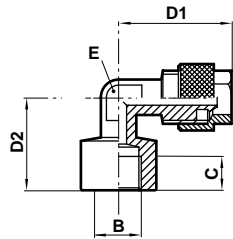


24145

| Product number | For use with tube OD/ID | B | C | D1 | D2 | E A/F |
|----------------|-------------------------|-----|------|------|------|-------|
| 241450418 | 4/2,5 | 1/8 | 7,5 | 18,5 | 15,0 | 8 |
| 241450518 | 5/3 | 1/8 | 7,5 | 18,5 | 15,0 | 8 |
| 241450618 | 6/4 | 1/8 | 7,5 | 18,5 | 15,0 | 8 |
| 241450628 | 6/4 | 1/4 | 11,0 | 20,6 | 19,0 | 8 |
| 241450638 | 6/4 | 3/8 | 11,5 | 21,0 | 20,5 | 9 |
| 241450818 | 8/6 | 1/8 | 7,5 | 19,9 | 16,5 | 9 |
| 241450828 | 8/6 | 1/4 | 11,0 | 21,9 | 19,0 | 9 |
| 241450838 | 8/6 | 3/8 | 11,5 | 23,4 | 21,0 | 9 |
| 241450848 | 8/6 | 1/2 | 14,0 | 23,4 | 28,0 | 16 |
| 241451018 | 10/8 | 1/8 | 7,5 | 24,0 | 18,0 | 11 |
| 241451028 | 10/8 | 1/4 | 11,0 | 24,0 | 22,0 | 11 |
| 241451038 | 10/8 | 3/8 | 11,5 | 25,5 | 22,0 | 11 |
| 241451048 | 10/8 | 1/2 | 14,0 | 25,5 | 28,0 | 16 |
| 241451238 | 12/10 | 3/8 | 11,5 | 27,0 | 22,5 | 13 |
| 241451248 | 12/10 | 1/2 | 14,0 | 27,0 | 28,0 | 16 |
| 241451548 | 15/12,5 | 1/2 | 14,0 | 31,5 | 28,0 | 16 |

Elbow Female Adaptor

Tube to parallel female BSP thread

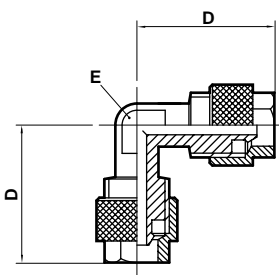


24246

| Product number | For use with tube OD/ID | B | C | D1 | D2 | E A/F |
|----------------|-------------------------|-----|------|------|----|-------|
| 242460518 | 5/3 | 1/8 | 7,5 | 20,6 | 18 | 8 |
| 242460618 | 6/4 | 1/8 | 7,5 | 20,6 | 18 | 8 |
| 242460628 | 6/4 | 1/4 | 11,0 | 21,2 | 21 | 9 |
| 242460818 | 8/6 | 1/8 | 7,5 | 21,9 | 19 | 9 |
| 242460828 | 8/6 | 1/4 | 11,0 | 23,4 | 21 | 9 |
| 242461028 | 10/8 | 1/4 | 11,0 | 25,5 | 22 | 11 |
| 242461038 | 10/8 | 3/8 | 11,5 | 25,5 | 25 | 14 |

Elbow Connector

Tube to tube

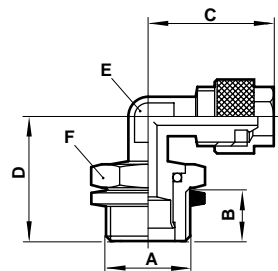


24040

| Product number | For use with tube OD/ID | D | E A/F |
|----------------|-------------------------|------|-------|
| 240400400 | 4/2,5 | 20,0 | 8 |
| 240400500 | 5/3 | 20,6 | 8 |
| 240400600 | 6/4 | 20,6 | 8 |
| 240400806 | 8/6-6/4 | 21,9 | 9 |
| 240400800 | 8/6 | 21,9 | 9 |
| 240401000 | 10/8 | 25,5 | 11 |
| 240401200 | 12/10 | 27,0 | 13 |
| 240401500 | 15/12,5 | 33,5 | 16 |

Swivel Elbow Adaptor

Tube to male BSPP



24247

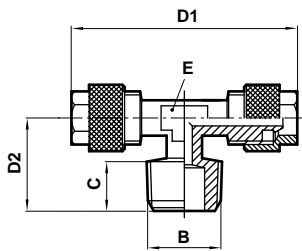
| Product number | For use with tube OD/ID | A BSPP | B | C | D | E A/F | F A/F |
|----------------|-------------------------|--------|---|------|----|-------|-------|
| 242470618 | 6/4 | 1/8 | 6 | 20,6 | 20 | 8 | 14 |
| 242470628 | 6/4 | 1/4 | 8 | 20,6 | 22 | 8 | 17 |
| 242470818 | 8/6 | 1/8 | 6 | 21,6 | 20 | 9 | 14 |
| 242470828 | 8/6 | 1/4 | 8 | 23,1 | 23 | 9 | 17 |
| 242471028 | 10/8 | 1/4 | 8 | 24 | 24 | 11 | 17 |

Supplied complete with sealing washer



Tee Male Adaptor

Tube to male taper
BSP centre leg

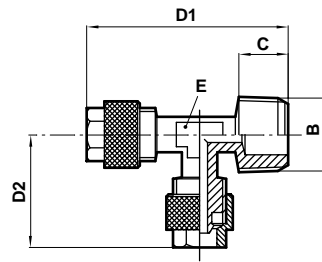


24165

| Product number | For use with tube OD/ID | B | C | D1 | D2 | E A/F |
|----------------|-------------------------|-----|------|------|------|-------|
| 241650418 | 4/2,5 | 1/8 | 7,5 | 37,0 | 15,0 | 8 |
| 241650518 | 5/3 | 1/8 | 7,5 | 37,2 | 15,0 | 8 |
| 241650618 | 6/4 | 1/8 | 7,5 | 37,2 | 15,0 | 8 |
| 241650628 | 6/4 | 1/4 | 11,0 | 41,2 | 19,0 | 9 |
| 241650818 | 8/6 | 1/8 | 7,5 | 39,8 | 16,5 | 9 |
| 241650828 | 8/6 | 1/4 | 11,0 | 43,8 | 20,5 | 9 |
| 241651018 | 10/8 | 1/8 | 7,5 | 48,0 | 18,0 | 11 |
| 241651028 | 10/8 | 1/4 | 11,0 | 48,0 | 22,0 | 11 |
| 241651038 | 10/8 | 3/8 | 11,5 | 51,0 | 22,0 | 11 |
| 241651238 | 12/10 | 3/8 | 11,5 | 54,0 | 22,5 | 13 |
| 241651548 | 15/12,5 | 1/2 | 14,0 | 63,0 | 28,0 | 16 |

Tee Male Adaptor

Tube to male taper
BSP side leg

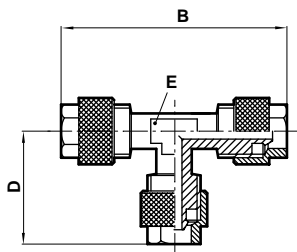


24175

| Product number | For use with tube OD/ID | B | C | D1 | D2 | E A/F |
|----------------|-------------------------|-----|------|------|------|-------|
| 241750518 | 5/3 | 1/8 | 7,5 | 36,7 | 20,6 | 8 |
| 241750618 | 6/4 | 1/8 | 7,5 | 36,7 | 20,6 | 8 |
| 241750628 | 6/4 | 1/4 | 11,0 | 40,2 | 20,6 | 8 |
| 241750818 | 8/6 | 1/8 | 7,5 | 38,0 | 21,9 | 9 |
| 241750828 | 8/6 | 1/4 | 11,0 | 41,5 | 21,9 | 9 |
| 241751018 | 10/8 | 1/8 | 7,5 | 41,5 | 25,5 | 11 |
| 241751028 | 10/8 | 1/4 | 11,0 | 45,0 | 25,5 | 11 |
| 241751038 | 10/8 | 3/8 | 11,5 | 45,5 | 25,5 | 11 |
| 241751238 | 12/10 | 3/8 | 11,5 | 48,5 | 28,0 | 13 |
| 241751548 | 15/12,5 | 1/2 | 14,0 | 57,5 | 32,5 | 16 |

Tee Connector

Tube to tube

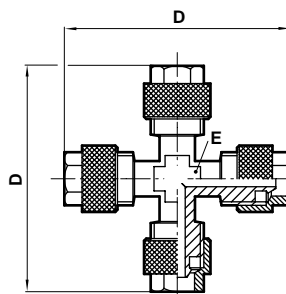


24060

| Product number | For use with tube OD/ID | B | D | E A/F |
|----------------|-------------------------|------|------|-------|
| 240600400 | 4/2,5 | 38,5 | 19,5 | 8 |
| 240600500 | 5/3 | 41,2 | 20,6 | 8 |
| 240600600 | 6/4 | 41,2 | 20,6 | 8 |
| 240600806 | 8/6 - 6/4 | 43,8 | 20,6 | 9 |
| 240600800 | 8/6 | 43,8 | 21,9 | 9 |
| 240601006 | 10/8 - 6/4 | 51,0 | 20,6 | 11 |
| 240601008 | 10/8 - 8/6 | 51,0 | 21,9 | 11 |
| 240601000 | 10/8 | 51,0 | 25,5 | 11 |
| 240601200 | 12/10 | 54,0 | 28,0 | 13 |
| 240601500 | 15/12,5 | 63,0 | 32,5 | 16 |

Equal Cross Connector

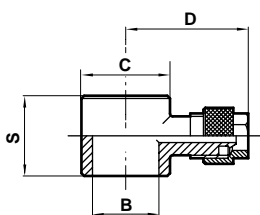
Tube to tube



24090

| Product number | For use with tube OD/ID | D | E A/F |
|----------------|-------------------------|------|-------|
| 240900500 | 5/3 | 41,6 | 8 |
| 240900600 | 6/4 | 41,6 | 8 |
| 240900800 | 8/6 | 44,4 | 9 |
| 240901000 | 10/8 | 51,0 | 11 |
| 240901200 | 12/10 | 58,0 | 13 |
| 240901500 | 15/12,5 | 64,0 | 17 |

Single Banjo Body

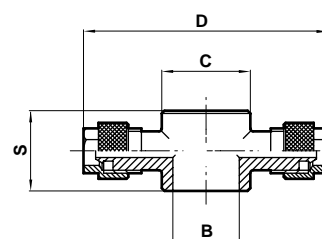


24051

| Product number | For use with tube OD/ID | Thread | B | C | S | D |
|----------------|-------------------------|--------|------|------|------|------|
| 240510405 | 4/2,5 | M5 | 5,1 | 9,0 | 9,0 | 16,5 |
| †240510406 | 4/2,5 | M5 | 6,1 | 9,0 | 9,0 | 16,5 |
| 240510418 | 4/2,5 | 1/8 | 10,0 | 14,0 | 14,5 | 23,3 |
| 240510505 | 5/3 | M5 | 5,1 | 9,0 | 9,0 | 16,5 |
| †240510506 | 5/3 | M5 | 6,1 | 9,0 | 9,0 | 16,5 |
| 240510518 | 5/3 | 1/8 | 10,0 | 14,0 | 14,5 | 23,3 |
| 240510605 | 6/4 | M5 | 5,1 | 9,0 | 9,0 | 16,5 |
| †240510606 | 6/4 | M5 | 6,1 | 9,0 | 9,0 | 16,5 |
| 240510618 | 6/4 | 1/8 | 10,0 | 14,0 | 14,5 | 23,3 |
| 240510628 | 6/4 | 1/4 | 13,3 | 18,0 | 14,5 | 25,3 |
| 240510638 | 6/4 | 3/8 | 16,6 | 21,0 | 14,5 | 26,8 |
| 240510818 | 8/6 | 1/8 | 10,0 | 14,0 | 14,5 | 24,7 |
| 240510828 | 8/6 | 1/4 | 13,3 | 18,0 | 14,5 | 27,6 |
| 240510838 | 8/6 | 3/8 | 16,6 | 21,0 | 14,5 | 27,7 |
| 240510848 | 8/6 | 1/2 | 21,0 | 26,0 | 14,5 | 31,2 |
| 240511018 | 10/8 | 1/8 | 10,0 | 14,0 | 14,5 | 27,5 |
| 240511028 | 10/8 | 1/4 | 13,3 | 18,0 | 14,5 | 29,5 |
| 240511038 | 10/8 | 3/8 | 16,6 | 21,0 | 14,5 | 30,5 |
| 240511048 | 10/8 | 1/2 | 21,0 | 26,0 | 14,5 | 34,0 |
| 240511238 | 12/10 | 3/8 | 16,6 | 21,0 | 14,5 | 31,5 |
| 240511248 | 12/10 | 1/2 | 21,0 | 26,0 | 14,5 | 35,0 |
| 240511548 | 15/12,5 | 1/2 | 21,0 | 26,0 | 14,5 | 36,5 |

† to be used with bolts marked *alongside.

Double Banjo Body

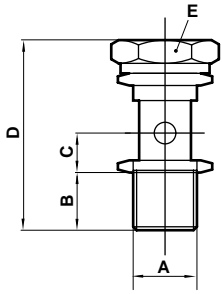


24071

| Product number | For use with tube OD/ID | B | C | S | D |
|----------------|-------------------------|------|----|------|------|
| 240710405 | 4/2,5 - M5 | 5,1 | 9 | 9,0 | 33,0 |
| 240710418 | 4/2,5 - 1/8 | 10,0 | 14 | 14,5 | 46,6 |
| 240710505 | 5/3 - M5 | 5,1 | 9 | 9,0 | 33,0 |
| 240710518 | 5/3 - 1/8 | 10,0 | 14 | 14,5 | 46,6 |
| 240710605 | 6/4 - M5 | 5,1 | 9 | 9,0 | 33,0 |
| 240710618 | 6/4 - 1/8 | 10,0 | 14 | 14,5 | 46,6 |
| 240710628 | 6/4 - 1/4 | 13,3 | 18 | 14,5 | 50,6 |
| 240710638 | 6/4 - 3/8 | 16,6 | 21 | 14,5 | 53,6 |
| 240710818 | 8/6 - 1/8 | 10,0 | 14 | 14,5 | 49,4 |
| 240710828 | 8/6 - 1/4 | 13,3 | 18 | 14,5 | 55,2 |
| 240710838 | 8/6 - 3/8 | 16,6 | 21 | 14,5 | 55,4 |
| 240710848 | 8/6 - 1/2 | 21,0 | 26 | 14,5 | 61,0 |
| 240711018 | 10/8 - 1/8 | 10,0 | 14 | 14,5 | 53,0 |
| 240711028 | 10/8 - 1/4 | 13,3 | 18 | 14,5 | 59,0 |
| 240711038 | 10/8 - 3/8 | 16,6 | 21 | 14,5 | 61,0 |
| 240711048 | 10/8 - 1/2 | 21,0 | 26 | 14,5 | 68,0 |
| 240711238 | 12/10 - 3/8 | 16,6 | 21 | 14,5 | 63,0 |
| 240711248 | 12/10 - 1/2 | 21,0 | 26 | 14,5 | 70,0 |
| 240711548 | 15/12,5 - 1/2 | 21,0 | 26 | 14,5 | 73,0 |



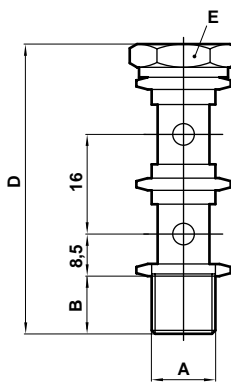
Banjo Stem Single Short



24A00

| Product number | A | B | C | D | E A/F |
|----------------|-----|----|-----|------|-------|
| 24A000005 | M5 | 4 | 4,5 | 18,0 | 8 |
| 24A000018 | 1/8 | 6 | 8,5 | 27,5 | 14 |
| 24A000028 | 1/4 | 8 | 8,5 | 30,0 | 17 |
| 24A000038 | 3/8 | 9 | 8,5 | 30,5 | 19 |
| 24A000048 | 1/2 | 10 | 8,5 | 31,5 | 24 |

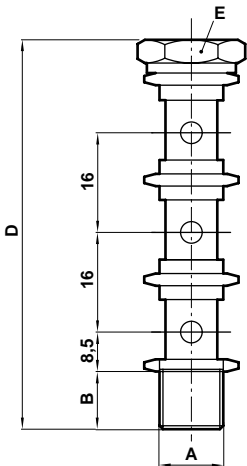
Banjo Stem Double Short



24B00

| Product number | A | B | D | E A/F |
|----------------|-----|----|------|-------|
| 24B000018 | 1/8 | 6 | 43,0 | 14 |
| 24B000028 | 1/4 | 8 | 46,0 | 17 |
| 24B000038 | 3/8 | 9 | 46,5 | 19 |
| 24B000048 | 1/2 | 10 | 47,5 | 24 |

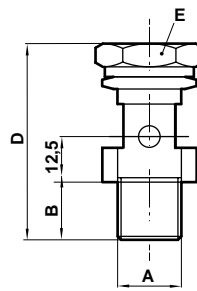
Banjo Stem Triple Short



24C00

| Product number | A | B | D | E A/F |
|----------------|-----|----|------|-------|
| 24C000018 | 1/8 | 6 | 59,0 | 14 |
| 24C000028 | 1/4 | 8 | 62,0 | 17 |
| 24C000038 | 3/8 | 9 | 62,5 | 19 |
| 24C000048 | 1/2 | 10 | 63,5 | 24 |

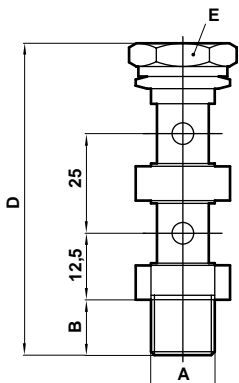
Banjo Stem Single Long



24A00

| Product number | A BSPT | B | D | E A/F |
|----------------|--------|----|------|-------|
| 24A00L018 | 1/8 | 6 | 31,0 | 14 |
| 24A00L028 | 1/4 | 8 | 33,5 | 17 |
| 24A00L038 | 3/8 | 9 | 34,5 | 19 |
| 24A00L048 | 1/2 | 10 | 35,5 | 24 |

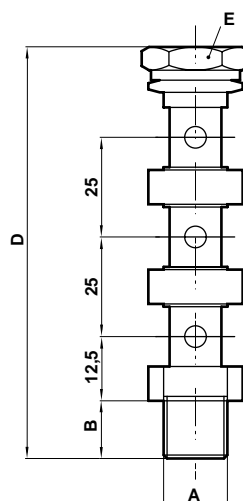
Banjo Stem Double Long



24B00

| Product number | A | B | D | E A/F |
|----------------|-----|----|------|-------|
| 24B00L018 | 1/8 | 6 | 56,0 | 14 |
| 24B00L028 | 1/4 | 8 | 58,5 | 17 |
| 24B00L038 | 3/8 | 9 | 59,5 | 19 |
| 24B00L048 | 1/2 | 10 | 60,5 | 24 |

Banjo Stem Triple Long



24C00

| Product number | A | B | D | E A/F |
|----------------|-----|----|------|-------|
| 24C00L018 | 1/8 | 6 | 81,0 | 14 |
| 24C00L028 | 1/4 | 8 | 83,5 | 17 |
| 24C00L038 | 3/8 | 9 | 84,5 | 19 |
| 24C00L048 | 1/2 | 10 | 85,5 | 24 |

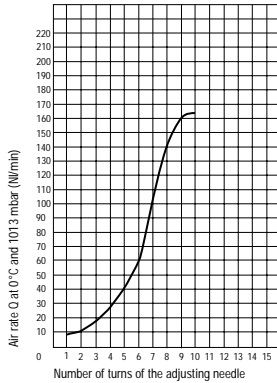


Banjo Flow Regulators

Operating pressure 0 -10 bar

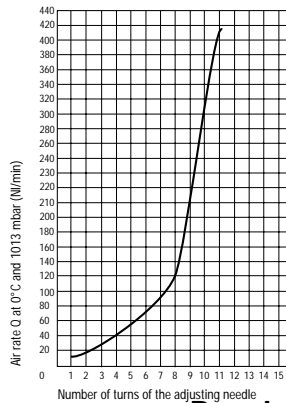
Adjustable Restrictor Valves 1/8 (DN2)
Supply pressure = 7 bar
 $\Delta p = 1$ bar

Adjustable Restrictor Valves 1/8 (DN2)
Supply pressure = 7 bar
 $p = 1$ bar



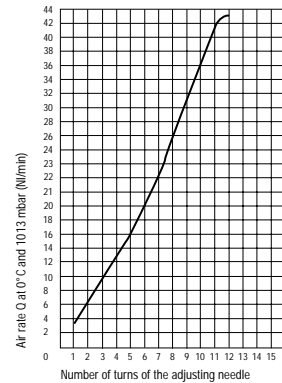
Adjustable Restrictor Valves 1/4 (DN3.5)
Supply pressure = 7 bar
 $\Delta p = 1$ bar

Adjustable Restrictor Valves 1/4 (DN3.5)
Supply pressure = 7 bar
 $p = 1$ bar



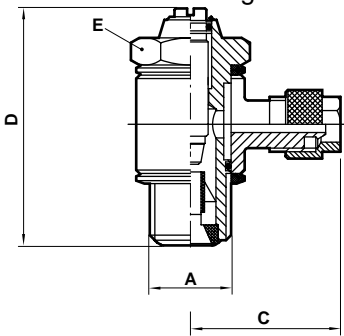
Adjustable Restrictor Valves M5 (DN1.5)
Supply pressure = 7 bar
 $\Delta p = 1$ bar

Adjustable Restrictor Valves M5 (DN1.5)
Supply pressure = 7 bar
 $p = 1$ bar



Flow Regulator regulating out

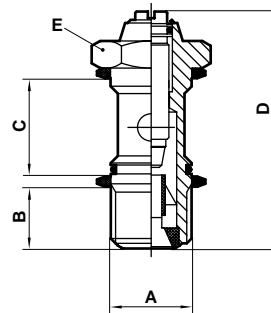
Screwdriver regulation



24K51

| Product number | O/D tube | A | C | D | E A/F |
|----------------|----------|-----|------|------|-------|
| 24K510405 | 4/2,5 | M5 | 16,5 | 24,0 | 8,0 |
| 24K510418 | 4/2,5 | 1/8 | 23,3 | 30,5 | 14,0 |
| 24K510605 | 6/4 | M5 | 16,5 | 24,0 | 8,0 |
| 24K510618 | 6/4 | 1/8 | 23,3 | 30,5 | 14,0 |
| 24K510628 | 6/4 | 1/4 | 25,3 | 30,5 | 17,0 |
| 24K510818 | 8/6 | 1/8 | 24,7 | 30,5 | 14,0 |
| 24K510828 | 8/6 | 1/4 | 27,6 | 35,5 | 17,0 |
| 24K511028 | 10/8 | 1/4 | 29,5 | 35,5 | 17,0 |

Regulating out



24K00

| Product number | A | B | C | D | E A/F |
|----------------|-----|-----|------|------|-------|
| *24K000005 | M5 | 4,0 | 12,5 | 24,0 | 8,0 |
| 24K000018 | 1/8 | 5,5 | 14,5 | 30,5 | 14,0 |
| 24K000028 | 1/4 | 8,5 | 14,5 | 35,5 | 17,0 |

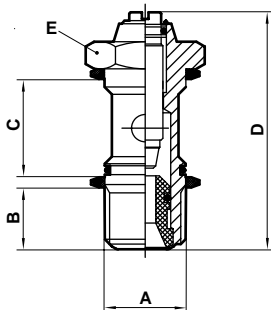
* to be used with bodies marked † alongside

Bi-directional flow

24M00

| Product number | A | B | C | D | E A/F |
|----------------|-----|-----|------|------|-------|
| *24M000005 | M5 | 4,0 | 12,5 | 24,0 | 8,0 |
| 24M000018 | 1/8 | 5,5 | 14,5 | 30,5 | 14,0 |
| 24M000028 | 1/4 | 8,5 | 14,5 | 35,5 | 17,0 |

* to be used with bodies marked † alongside

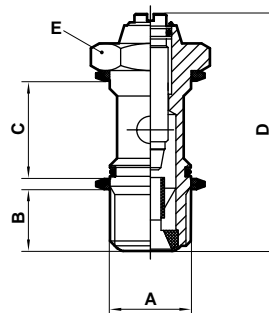


Regulating in

24L00

| Product number | A | B | C | D | E A/F |
|----------------|-----|-----|------|------|-------|
| *24L000005 | M5 | 4,0 | 12,5 | 24,0 | 8,0 |
| 24L000018 | 1/8 | 5,5 | 14,5 | 30,5 | 14,0 |
| 24L000028 | 1/4 | 8,5 | 14,5 | 35,5 | 17,0 |

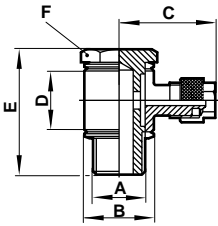
* to be used with bodies marked † alongside





Elbow Banjo Assembly
Non regulating bolt

24A51

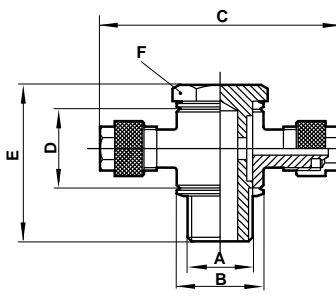


| Product number | tube size | A thread | B | C | D | E | F A/F |
|----------------|-----------|----------|------|------|------|------|-------|
| 24A510405 | 4/2,5 | M5 | 9,0 | 16,5 | 9,0 | 18,0 | 8 |
| 24A510505 | 5/3 | M5 | 9,0 | 16,5 | 9,0 | 18,0 | 8 |
| 24A510605 | 6/4 | M5 | 9,0 | 16,5 | 9,0 | 18,0 | 8 |
| 24A510418 | 4/2,5 | 1/8 | 14,0 | 23,3 | 14,5 | 27,5 | 14 |
| 24A510518 | 5/3 | 1/8 | 14,0 | 23,3 | 14,5 | 27,5 | 14 |
| 24A510618 | 6/4 | 1/8 | 14,0 | 23,3 | 14,5 | 27,5 | 14 |
| 24A510818 | 8/6 | 1/8 | 14,0 | 24,7 | 14,5 | 27,5 | 14 |
| 24A510628 | 6/4 | 1/4 | 18,0 | 25,3 | 14,5 | 30,0 | 17 |
| 24A510828 | 8/6 | 1/4 | 18,0 | 27,6 | 14,5 | 30,0 | 17 |
| 24A511028 | 10/8 | 1/4 | 18,0 | 29,5 | 14,5 | 30,0 | 17 |
| 24A510638 | 6/4 | 3/8 | 21,0 | 26,8 | 14,5 | 30,5 | 19 |
| 24A510838 | 8/6 | 3/8 | 21,0 | 27,7 | 14,5 | 30,5 | 19 |
| 24A511238 | 12/10 | 3/8 | 21,0 | 31,5 | 14,5 | 30,5 | 19 |
| 24A511248 | 12/10 | 1/2 | 26,0 | 35,0 | 14,5 | 31,5 | 24 |

Supplied complete with sealing washer

Tee Banjo Assembly
Non regulating bolt

24A71

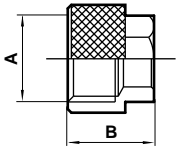


| Product number | Tube size | A thr'd | B | C | D | E | F A/F |
|----------------|-----------|---------|------|------|------|------|-------|
| 24A710405 | 4/2,5 | M5 | 9,0 | 33,0 | 9,0 | 18,0 | 8 |
| 24A710505 | 5/3 | M5 | 9,0 | 33,0 | 9,0 | 18,0 | 8 |
| 24A710605 | 6/4 | M5 | 9,0 | 33,0 | 9,0 | 18,0 | 8 |
| 24A710418 | 4/2,5 | 1/8 | 14,0 | 46,6 | 14,5 | 27,5 | 14 |
| 24A710518 | 5/3 | 1/8 | 14,0 | 46,6 | 14,5 | 27,5 | 14 |
| 24A710618 | 6/4 | 1/8 | 14,0 | 46,6 | 14,5 | 27,5 | 14 |
| 24A710818 | 8/6 | 1/8 | 14,0 | 49,4 | 14,5 | 27,5 | 14 |
| 24A710628 | 6/4 | 1/4 | 18,0 | 50,6 | 14,5 | 30,0 | 17 |
| 24A710828 | 8/6 | 1/4 | 21,0 | 53,6 | 14,5 | 30,5 | 19 |
| 24A710638 | 6/4 | 3/8 | 21,0 | 53,6 | 14,5 | 30,0 | 17 |
| 24A710838 | 8/6 | 3/8 | 21,0 | 55,4 | 14,5 | 30,5 | 19 |
| 24A710848 | 8/6 | 1/2 | 26,0 | 61,0 | 14,5 | 31,5 | 24 |
| 24A711028 | 10/8 | 1/4 | 18,0 | 59,0 | 14,5 | 30,0 | 17 |
| 24A711238 | 12/10 | 3/8 | 21,0 | 63,0 | 14,5 | 30,5 | 19 |
| 24A711248 | 12/10 | 1/2 | 26,0 | 70,0 | 14,5 | 31,5 | 24 |

Supplied complete with sealing washer

Tubing Nut

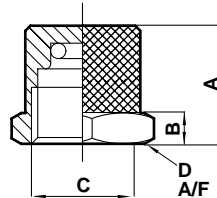
24001



| Product number | tube size | A thread | B |
|----------------|-----------|-----------|------|
| 240010400 | 4/2,5 | M6 x 0,5 | 10,0 |
| 240010500 | 5/3 | M7 x 0,75 | 10,0 |
| 240010600 | 6/4 | M10 x 1,0 | 11,0 |
| 240010800 | 8/6 | M12 x 1,0 | 11,5 |
| 240011000 | 10/8 | M14 x 1,0 | 13,5 |
| 240011200 | 12/10 | M16 x 1,0 | 15,0 |
| 240011500 | 15/12,5 | M20 x 1,0 | 16,0 |

Plug

24005



| Product number | tube size | A | B | C thread | D A/F HEX |
|----------------|-----------|------|-----|-----------|-----------|
| 240050400 | 4/3 | 10,5 | 3,5 | M6 x 0,5 | 8,0 |
| 240050600 | 6/4 | 11,5 | 4,0 | M10 x 1,0 | 12,0 |
| 240050800 | 8/6 | 13,5 | 4,0 | M12 x 1,0 | 14,0 |

Warning

These products are intended for use in industrial compressed air systems only. Do not use these products where pressures and temperatures can exceed those listed under 'Technical Data'.

Before using these products with fluids other than those specified, for non-industrial applications, life-support systems, or other applications not within published specifications, consult Norgren.

Through misuse, age, or malfunction, components used in fluid power systems can fail in various modes. The system designer is warned to consider the failure modes of all component parts used in fluid power systems and to provide adequate safeguards to prevent personal injury or damage to equipment in the event of such failure.

System designers must provide a warning to end users in the system instructional manual if protection against a failure mode cannot be adequately provided.

System designers and end users are cautioned to review specific warnings found in instruction sheets packed and shipped with these products where applicable.