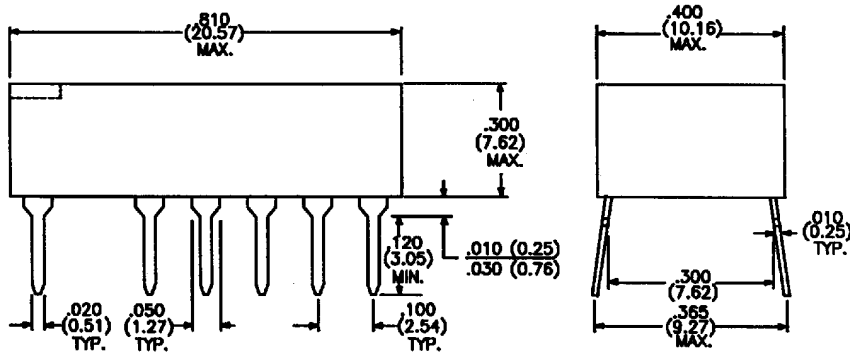


SCHOTTKY TTL BUFFERED DELAY MODULES

5-TAP 14-PIN MILITARY THROUGH -HOLE DIL DTZM3-XXX SERIES

PART NUMBER	OUTPUT DELAY (ns)	TAP-TO-TAP DELAY (ns)
DTZM3-25	25 ± 2.00	5 ± 2.0
DTZM3-30	30 ± 2.00	6 ± 2.0
DTZM3-35	35 ± 2.00	7 ± 2.0
DTZM3-40	40 ± 2.00	8 ± 2.0
DTZM3-50	50 ± 2.50	10 ± 2.0
DTZM3-60	60 ± 3.00	12 ± 2.0
DTZM3-70	70 ± 3.50	14 ± 2.0
DTZM3-75	75 ± 3.75	15 ± 2.5
DTZM3-100	100 ± 5.00	20 ± 3.0
DTZM3-125	125 ± 6.25	25 ± 3.0
DTZM3-150	150 ± 7.50	30 ± 3.0
DTZM3-175	175 ± 8.75	35 ± 3.5
DTZM3-200	200 ± 10.00	40 ± 4.0
DTZM3-225	225 ± 11.25	45 ± 4.5
DTZM3-250	250 ± 12.50	50 ± 5.0
DTZM3-275	275 ± 13.75	55 ± 5.5
DTZM3-300	300 ± 15.00	60 ± 6.0
DTZM3-325	325 ± 16.25	65 ± 6.5
DTZM3-350	350 ± 17.50	70 ± 7.0
DTZM3-400	400 ± 20.00	80 ± 8.0
DTZM3-450	450 ± 22.50	90 ± 9.0
DTZM3-500	500 ± 25.00	100 ± 10

PHYSICAL DIMENSIONS All dimensions in inches (mm)



See Page 10 for Pin-Outs and schematic diagrams.

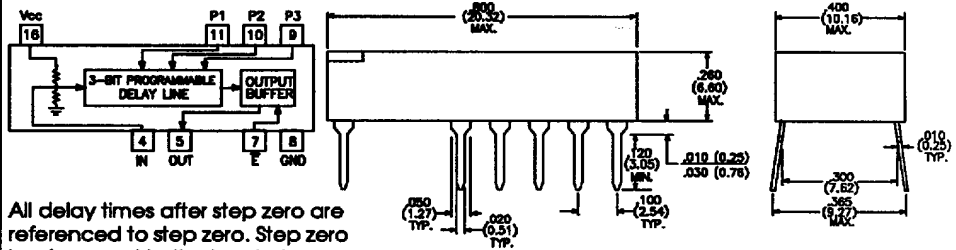
PART NUMBER DESCRIPTION

DTZM3 - XXX
 5-Tap Military Delay Line
 See Page 10 for Pin-Outs
 Total Delay in nanoseconds (ns)

3-BIT PROGRAMMABLE THROUGH -HOLE DIL PLDM7-XX SERIES

PART NUMBER	Min. (ns)	Max. (ns)	Max. Dev. (ns)	STEP DELAY (ns)
PLDM7-0.5	7±1	10.5	±.30	0.5 ± .25
PLDM7-1	7±1	14	±.50	1.0 ± .40
PLDM7-2	7±1	21	±.80	2.0 ± .70
PLDM7-3	7±1	28	±1.0	3.0 ± .70
PLDM7-4	7±1	35	±1.0	4.0 ± .80
PLDM7-5	7±1	42	±1.5	5.0 ± 1.0
PLDM7-6	7±1	49	±2.0	6.0 ± 1.0
PLDM7-7	7±1	56	±2.0	7.0 ± 1.0
PLDM7-8	7±1	63	±2.5	8.0 ± 1.0
PLDM7-9	7±1	70	±2.5	9.0 ± 1.2
PLDM7-10	7±1	77	±3.0	10.0 ± 1.5

SCHEMATIC DIAGRAM PHYSICAL DIMENSIONS All dimensions in inches (mm)
 Military Part Height for PLDM7-XXM: .300 (7.62) Max.

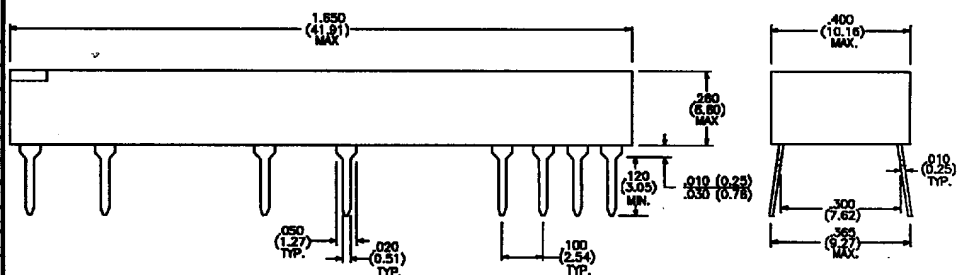


All delay times after step zero are referenced to step zero. Step zero is referenced to the input pin.

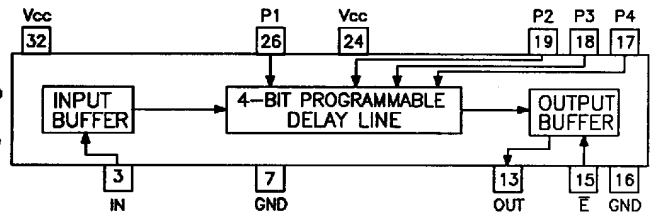
4-BIT PROGRAMMABLE THROUGH -HOLE DIL PLDMXX-XX SERIES

PART NUMBER	Min. (ns)	Max. (ns)	Max. Dev. (ns)	STEP DELAY (ns)
PLDM15-1	15±1	30	±1.0	1.0 ± .50
PLDM15-2	15±1	45	±1.5	2.0 ± .70
PLDM15-3	15±1	60	±2.0	3.0 ± .70
PLDM15-4	15±1	75	±2.5	4.0 ± .80
PLDM15-5	15±1	90	±3.0	5.0 ± 1.0
PLDM15-6	15±1	105	±3.5	6.0 ± 1.5
PLDM15-7	15±1	120	±3.5	7.0 ± 2.0
PLDM15-8	15±1	135	±4.0	8.0 ± 2.0
PLDM15-9	15±1	150	±4.0	9.0 ± 2.0
PLDM20-1	20±2	35	±1.0	1.0 ± .50
PLDM20-2	20±2	50	±1.5	2.0 ± .70
PLDM20-3	20±2	65	±2.0	3.0 ± .70
PLDM20-4	20±2	80	±2.5	4.0 ± .80
PLDM20-5	20±2	95	±3.0	5.0 ± 1.0
PLDM30-1	30±3	45	±1.0	1.0 ± .50
PLDM30-2	30±3	60	±1.5	2.0 ± .70
PLDM30-3	30±3	75	±2.0	3.0 ± .70
PLDM30-4	30±3	90	±2.5	4.0 ± .80
PLDM30-5	30±3	105	±3.0	5.0 ± 1.0

PHYSICAL DIMENSIONS in inches (mm) , Military Height for PLDMXX-XXM: .300 (7.62) Max.



SCHEMATIC DIAGRAM



All delay times after step zero are referenced to step zero. Step zero is referenced to the input pin.

Specifications subject to change without notice



15801 Chemical Lane
 Huntington Beach, California 92649-1595
 Phone: (714) 898-0960 • (213) 594-8918
 FAX: (714) 896-0971