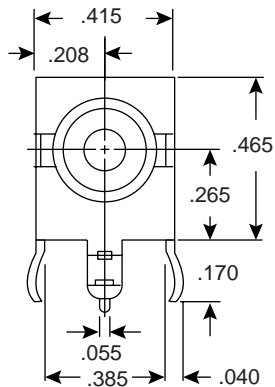
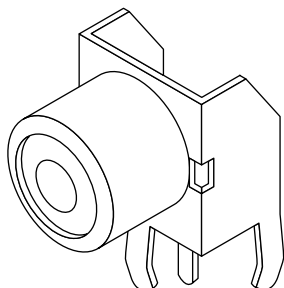


# RCA Phono Jacks

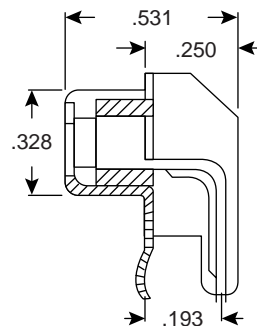
161-4214, 161-4215

**KOBI**CONN

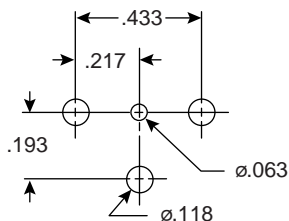
RCA Phono Jacks



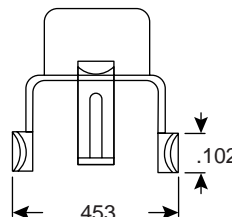
Front View



Side View



PCB Hole Layout



Top View

## DIMENSIONS (IN.)

Tolerance:  $\pm 0.005$

## SPECIFICATIONS

<b>Type:</b>	PCB mount phono
<b>Shell:</b>	2 $\mu$ nickel plated steel
<b>Contacts:</b>	tin plated brass
<b>Insulator:</b>	ABS
<b>Washer</b>	linen
<b>Initial insertion:</b>	12 lbs (max) w/ $\phi .128 \pm .0002$ " pin
<b>Retention:</b>	3oz (min) w/ $\phi .1235 \pm .0002$ " after sizing 3 times w/ $\phi .128 \pm .0002$ " pin
<b>Temperature rating:</b>	70°C
<b>Recommended cleaning solvent:</b>	alcohol
<b>Insulator color:</b>	white (161-4214), red (161-4215)
<b>Angle:</b>	90°

Date Last Revised: 4-06-04

Available from Mouser Electronics  
1-800-346-6873  
www.mouser.com

KC-300005

161-4214, 161-4215