

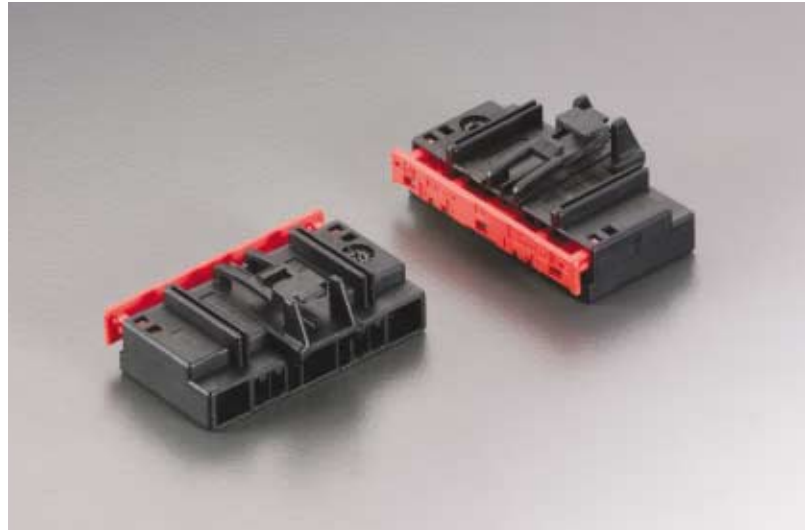
Component-to-wire connectors **FCI**

DCS-1 / 1.5 mm terminals

7 way female housing for 1.5 + 6.3 mm terminals

Features

- Additional terminal locking device pre-assembled on front part of the housing
- Plastic locking feature
- Mechanical polarization



Performance characteristics

- Temperature range: from -40°C to +120°C
- Contact retention force: > 80 N
- Contact insertion force: < 15 N for 6.3 mm terminals
- Connector mating force: < 90 N

Construction

- Housing material: PBT

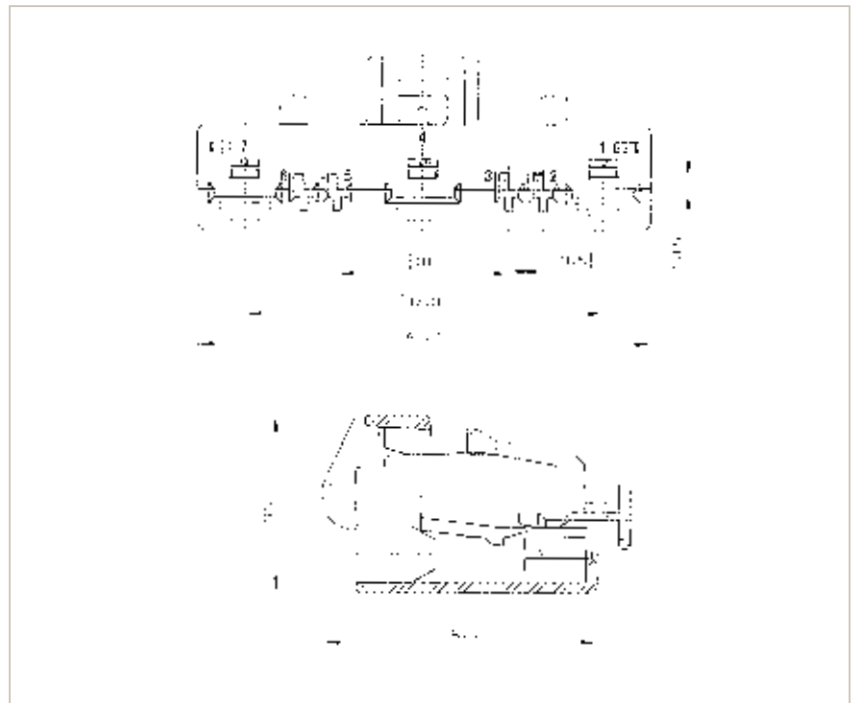
Tooling

- Front device removal tool: Consult us
- Terminal removal tool: Consult us

Connector compatibility

- Usable terminals:
 - 1.5 mm female terminals
 - DCS-1 6.3 mm female terminals

Dimensional characteristics



Part Numbers	No. of position	Terminal size	Colour
6 023 11 11	7	4 x [1.5 mm] + 3 x [6.3 mm]	Black