

HIGH FREQUENCY MAGNETICS

Wideband Hybrid Signal Combiner & Splitter

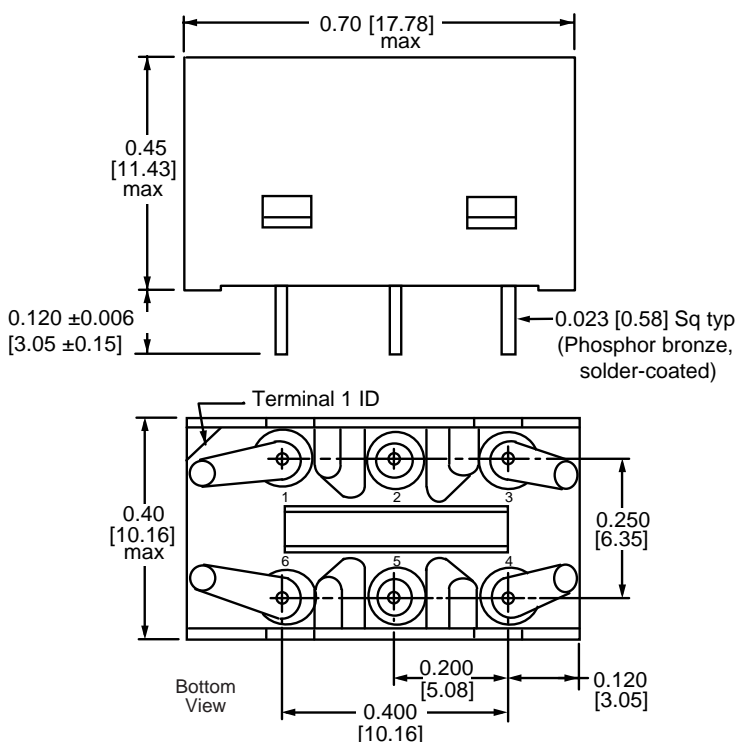
TM9923

- A wideband, equal-ratio hybrid transformer suitable for both analog and digital applications requiring signal splitting or combining
- Qualified per Bellcore TR-TSY-00357-1
- Meets IEC-695, 2-2 flammability requirements
- Compatible with standard printed-wiring board assembly and cleaning processes and machine placement
- Compatible with infrared (IR) reflow soldering processes so it can be used in mixed-assembly (wave and reflow) solder application

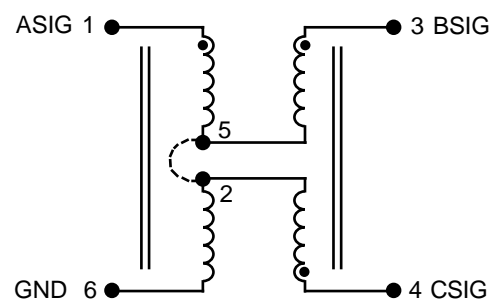
ELECTRICAL SPECIFICATIONS at 25° C

Part Number	Impedance Ratio	Nominal Signal Split dB	3dB Bandwidth typ	Pulse Rise Time ns typ
	(1 - 6) : (3 - 6) + (4 - 6)	ASIG to BSIG ASIG to CSIG	ASIG to BSIG ASIG to CSIG	
2689J2	75Ω : 75Ω + 75Ω	3.0	20 kHz - 800 MHz	0.5

MECHANICAL



SCHEMATIC



TM9923

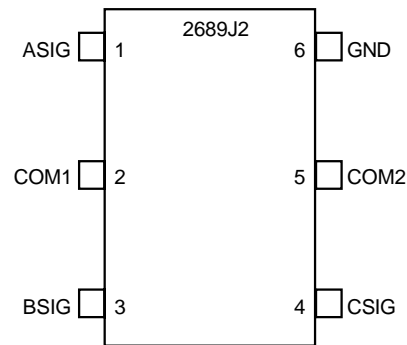
APPLICATIONS NOTES

The 2689J2 hybrid transformer operates with 75Ω terminations over an extremely wide frequency spectrum (3 dB response: 20 kHz to 800 MHz). It can also be used as a pulse transformer with very fast pulses (typical rise time: 0.5 ns). The 2689J2 operates as either a signal splitter or a signal combiner. As a signal splitter, the transformer provides two identical output signals (which are in phase with each other) from a single input. Each of the two output signals is 3 dB down from the input signal (half the power of the input signal). There is a high degree of separation or transhybrid loss between the two output signals. As a signal combiner, the transformer provides a single output signal from two identical input signals (which are in phase with each other). The output signal has twice the power of either input signal.

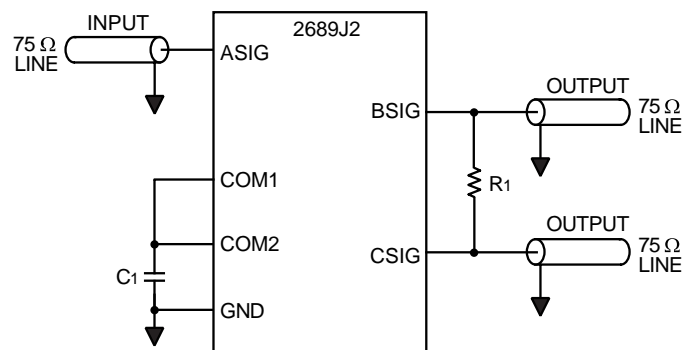
PIN DESCRIPTIONS AND TERMINATIONS

Pin	Symbol	Name and Function
1	ASIG	A signal. Input for splitter configuration. Output for combiner application.
2	COM1	Common point of transformer 1. Must be connected externally to COM2.
3	BSIG	B signal. Output for splitter configuration. Input for combiner application.
4	CSIG	C signal. Output for splitter configuration. Input for combiner application.
5	COM2	Common point of transformer 2. Must be connected externally to COM1.
6	GND	Ground. Connect to circuit ground.
	R1	162Ω external resistor.
	C1	7 pF external capacitor.

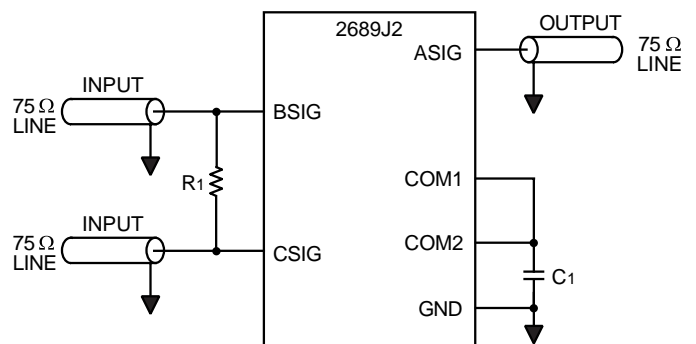
PIN DIAGRAM



SIGNAL SPLITTER



SIGNAL COMBINER



©1999 Bel Fuse Inc. Specifications subject to change without notice. 06.99

CORPORATE

Bel Fuse Inc.
198 Van Vorst Street
Jersey City, NJ 07302
Tel 201-432-0463
Fax 201-432-9542
www.belfuse.com

FAR EAST

Bel Fuse Ltd.
8F / 8 Luk Hop Street
San Po Kong
Kowloon, Hong Kong
Tel 852-2328-5515
Fax 852-2352-3706
www.belfuse.com

EUROPE

Bel Fuse Europe Ltd.
Preston Technology Management Centre
Marsh Lane, Suite F23, Preston
Lancashire, PR1 8UD, U.K.
Tel 44-1772-556601
Fax 44-1772-888366
www.belfuse.com