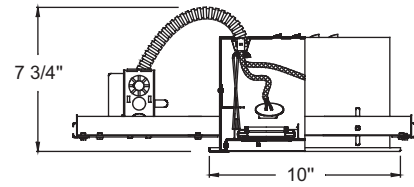
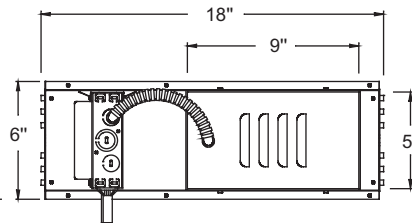


SPECIFICATION SHEET

RECESSED LIGHTING LOW VOLTAGE

MODEL MT-216



Catalog Information

Model	Description	Lamp	Watt	Trims	Interior
MT-216HS	Housing		50W		
MT-216-WT/BK	Two Light Gimbal Ring	MR16	50W	White	Black
MT-216-WT/WT	Two Light Gimbal Ring	MR16	50W	White	White

Product Features

- Lamp:** MR-16 50W max.
- Application:** For use in new construction or suspended ceilings.
- Lamp Retainment:** relamps from front.
- Aiming:** Pivots 45°, rotates 360°.
- Socket:** Bi-pin ceramic socket included with fixture.
- Transformer:** Each element is equipped with a 120V to 12V 75W electronic transformer.
- Dimming:** Generally dimmable with standard incandescent dimmers.
- Housing:** Integral part of the fixture. Equipped with hanger bars. Hanger bars may be installed on all four sides.

Options / Accessories

Lens Options: Colored, Colored Dichroic and Ultra Violet lenses.

Material

Steel trim with Aluminum housing.

Listings

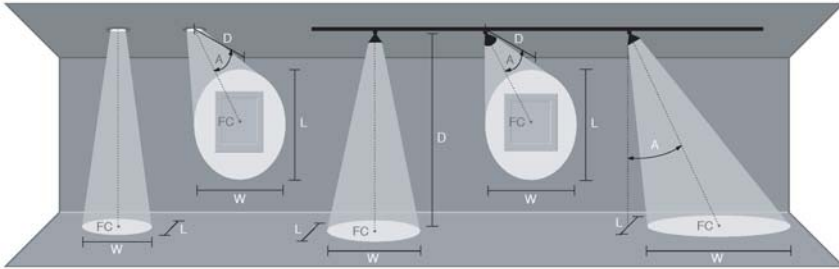
UL, CUL Listed.

W.A.C. reserves the right to change details that do not affect overall function and performance.



SPECIFICATION SHEET

RECESSED LIGHTING LOW VOLTAGE MODEL MT-216



Key	In Feet
D	Distance To Fixture From Wall Or Floor
FC	Initial Footcandle Level At Center Of Beam
L	Beam Length(where candlepower drops to 50% of maximum)
W	Beam Width(where candlepower drops to 50% of maximum)
CBCP	Center Beam Candle Power

Lamp Beam Spread CBCP	0° Aiming Angle				30° Aiming Angle				45° Aiming Angle				60° Aiming Angle			
	D	FC	L	W	D	FC	L	W	D	FC	L	W	D	FC	L	W
20W MR16* VNSP 7° EZX 7400	3'	822	0.4'	0.4'	3'	534	0.5'	0.4'	3'	291	0.7'	0.5'	3'	103	1.5'	0.7'
	5'	296	0.6'	0.6'	5'	192	0.8'	0.7'	5'	105	1.2'	0.9'	5'	37	2.5'	1.2'
	7'	151	0.9'	0.9'	7'	98	1.1'	1.0'	7'	53	1.7'	1.2'	7'	19	3.5'	1.7'
	9'	91	1.1'	1.1'	9'	59	1.5'	1.3'	9'	32	2.2'	1.6'	9'	11	4.5'	2.2'
20W MR16 NSP 15° ESX 3750	3'	417	0.8'	0.8'	3'	271	1.1'	0.9'	3'	147	1.6'	1.1'	3'	52	3.3'	1.6'
	5'	150	1.3'	1.3'	5'	97	1.8'	1.5'	5'	53	2.7'	1.9'	5'	19	5.6'	2.6'
	7'	77	1.8'	1.8'	7'	50	2.5'	2.1'	7'	27	3.8'	2.6'	7'	10	7.8'	3.7'
	9'	46	2.4'	2.4'	9'	30	3.2'	2.7'	9'	16	4.8'	3.4'	9'	6	10.0'	4.7'
20W MR16 FL 40° BAB 525	3'	58	2.2'	2.2'	3'	38	3.0'	2.5'	3'	21	5.0'	3.1'	3'	7	14.5'	4.4'
	5'	21	3.6'	3.6'	5'	14	5.1'	4.2'	5'	7	8.4'	5.1'	5'	3	24.2'	7.3'
	7'	11	5.1'	5.1'	7'	7	7.1'	5.9'	7'	4	11.7'	7.2'	7'	1	33.8'	10.2'
	9'	6	6.6'	6.6'	9'	4	9.1'	7.6'	9'	2	15.1'	9.3'	9'	1	43.5'	13.1'
35W MR16* SP 20° FMV 3200	3'	356	1.1'	1.1'	3'	231	1.4'	1.2'	3'	126	2.2'	1.5'	3'	44	4.7'	2.1'
	5'	128	1.8'	1.8'	5'	83	2.4'	2.0'	5'	45	3.6'	2.5'	5'	16	7.8'	3.5'
	7'	65	2.5'	2.5'	7'	42	3.3'	2.9'	7'	23	5.1'	3.5'	7'	8	10.9'	4.9'
	9'	40	3.2'	3.2'	9'	26	4.3'	3.7'	9'	14	6.6'	4.5'	9'	5	14.0'	6.3'
35W MR16 FL 40° FMW 1000	3'	111	2.2'	2.2'	3'	72	3.0'	2.5'	3'	39	5.0'	3.1'	3'	14	14.5'	4.4'
	5'	40	3.6'	3.6'	5'	26	5.1'	4.2'	5'	14	8.4'	5.1'	5'	5	24.2'	7.3'
	7'	20	5.1'	5.1'	7'	13	7.1'	5.9'	7'	7	11.7'	7.2'	7'	3	33.8'	10.2'
	9'	12	6.6'	6.6'	9'	8	9.1'	7.6'	9'	4	15.1'	9.3'	9'	2	43.5'	13.1'
50W MR16 NSP 15° EXT 8400	3'	933	0.8'	0.8'	3'	606	1.1'	0.9'	3'	330	1.6'	1.1'	3'	117	3.3'	1.6'
	5'	336	1.3'	1.3'	5'	218	1.8'	1.5'	5'	119	2.7'	1.9'	5'	42	5.6'	2.6'
	7'	171	1.8'	1.8'	7'	111	2.5'	2.1'	7'	61	3.8'	2.6'	7'	21	7.8'	3.7'
	9'	104	2.4'	2.4'	9'	67	3.2'	2.7'	9'	37	4.8'	3.4'	9'	13	10.0'	4.7'
50W MR16 NFL 25° EXZ 2900	3'	322	1.3'	1.3'	3'	209	1.8'	1.5'	3'	114	2.8'	1.9'	3'	40	6.2'	2.7'
	5'	116	2.2'	2.2'	5'	75	3.0'	2.6'	5'	41	4.7'	3.1'	5'	15	10.4'	4.4'
	7'	59	3.1'	3.1'	7'	38	4.2'	3.6'	7'	21	6.5'	4.4'	7'	7	14.6'	6.2'
	9'	36	4.0'	4.0'	9'	23	5.4'	4.6'	9'	13	8.4'	5.6'	9'	4	18.7'	8.0'
50W MR16 FL 40° EXN 1700	3'	189	2.2'	2.2'	3'	123	3.0'	2.5'	3'	67	5.0'	3.1'	3'	24	14.5'	4.4'
	5'	68	3.6'	3.6'	5'	44	5.1'	4.2'	5'	24	8.4'	5.1'	5'	9	24.2'	7.3'
	7'	35	5.1'	5.1'	7'	23	7.1'	5.9'	7'	12	11.7'	7.2'	7'	4	33.8'	10.2'
	9'	21	6.6'	6.6'	9'	14	9.1'	7.6'	9'	7	15.1'	9.3'	9'	3	43.5'	13.1'
65W MR16 SP 13° FPA 10880	8'	170	1.8'	1.8'	8'	110	2.4'	2.1'	8'	154	2.3'	1.6'	8'	21	7.6'	3.6'
	12'	76	2.7'	2.7'	12'	49	3.7'	3.2'	12'	79	3.2'	2.3'	12'	9	11.4'	5.5'
	16'	43	3.6'	3.6'	16'	28	4.9'	4.2'	16'	47	4.2'	2.9'	16'	5	15.2'	7.3'
	20'	27	4.6'	4.6'	20'	18	6.1'	5.3'	20'	32	5.1'	3.5'	20'	3	19.0'	9.1'
65W MR16 FL 40° FPB 13120	8'	205	5.8'	5.8'	8'	133	8.1'	6.7'	8'	186	8.4'	5.1'	8'	66	24.2'	7.3'
	12'	91	8.7'	8.7'	12'	59	12.2'	10.1'	12'	95	11.7'	7.2'	12'	33	33.8'	10.2'
	16'	51	11.6'	11.6'	16'	33	16.2'	13.4'	16'	57	15.1'	9.3'	16'	20	43.5'	13.1'
	20'	33	14.6'	14.6'	20'	21	20.3'	16.8'	20'	38	18.5'	11.3'	20'	14	53.2'	16.0'
71W MR16* NSP 15° EYF 11500	3'	1278	0.8'	0.8'	3'	830	1.1'	0.9'	3'	452	1.6'	1.1'	3'	160	3.3'	1.6'
	5'	460	1.3'	1.3'	5'	299	1.8'	1.5'	5'	163	2.7'	1.9'	5'	58	5.6'	2.6'
	7'	235	1.8'	1.8'	7'	152	2.5'	2.1'	7'	83	3.8'	2.6'	7'	29	7.8'	3.7'
	9'	142	2.4'	2.4'	9'	92	3.2'	2.7'	9'	50	4.8'	3.4'	9'	18	10.0'	4.7'
71W MR16* NFL 25° EYJ 5500	3'	611	1.3'	1.3'	3'	397	1.8'	1.5'	3'	216	2.8'	1.9'	3'	76	6.2'	2.7'
	5'	220	2.2'	2.2'	5'	143	3.0'	2.6'	5'	78	4.7'	3.1'	5'	28	10.4'	4.4'
	7'	112	3.1'	3.1'	7'	73	4.2'	3.6'	7'	40	6.5'	4.4'	7'	14	14.6'	6.2'
	9'	68	4.0'	4.0'	9'	44	5.4'	4.6'	9'	24	8.4'	5.6'	9'	8	18.7'	8.0'
71W MR16* FL 40° EYC 2200	3'	244	2.2'	2.2'	3'	159	3.0'	2.5'	3'	86	5.0'	3.1'	3'	31	14.5'	4.4'
	5'	88	3.6'	3.6'	5'	57	5.1'	4.2'	5'	31	8.4'	5.1'	5'	11	24.2'	7.3'
	7'	45	5.1'	5.1'	7'	29	7.1'	5.9'	7'	16	11.7'	7.2'	7'	6	33.8'	10.2'
	9'	27	6.6'	6.6'	9'	18	9.1'	7.6'	9'	10	15.1'	9.3'	9'	3	43.5'	13.1'

*Not Sold by W.A.C Lighting