

PLEASE CHECK WWW.MOLEX.COM FOR LATEST PART INFORMATION

Part Number: [0511161601](#)
Status: **Active**
Description: 4.00mm (.157") Pitch OBD-II Wire-to-Wire Receptacle Housing Flange Mount

Documents:

[3D Model](#) [Product Specification PS-51115-001 \(PDF\)](#)
[Drawing \(PDF\)](#) [RoHS Certificate of Compliance \(PDF\)](#)

General

Product Family Crimp Housings
 Series 51116
 Product Name OBD-II

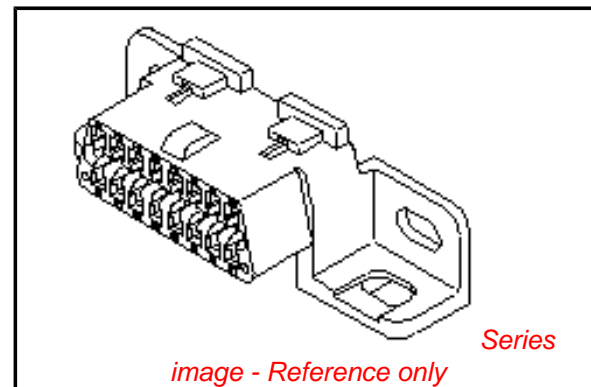
Physical

Circuits (maximum) 16
 Color - Resin Black
 Gender Receptacle
 Glow-Wire Compliant No
 Material - Resin Polyester
 Number of Rows 2
 Packaging Type Bag
 Panel Mount No
 Pitch - Mating Interface (in) 0.157 In
 Pitch - Mating Interface (mm) 4.00 mm
 Stackable No
 Temperature Range - Operating -40°C to +85°C

Material Info

Reference - Drawing Numbers

Product Specification PS-51115-001
 Sales Drawing SD-51116-**0*



EU RoHS

**ELV and RoHS
 Compliant**
REACH SVHC
 Not Reviewed
**Halogen-Free
 Status**

China RoHS



**Need more information on product
 environmental compliance?**

Email productcompliance@molex.com
 For a multiple part number RoHS Certificate of
 Compliance, [click here](#)

Please visit the [Contact Us](#) section for any
 non-product compliance questions.

Search Parts in this Series
 51116Series

Use With
 50420 , 51118

DWG. NO. SD-51116-***0*

E

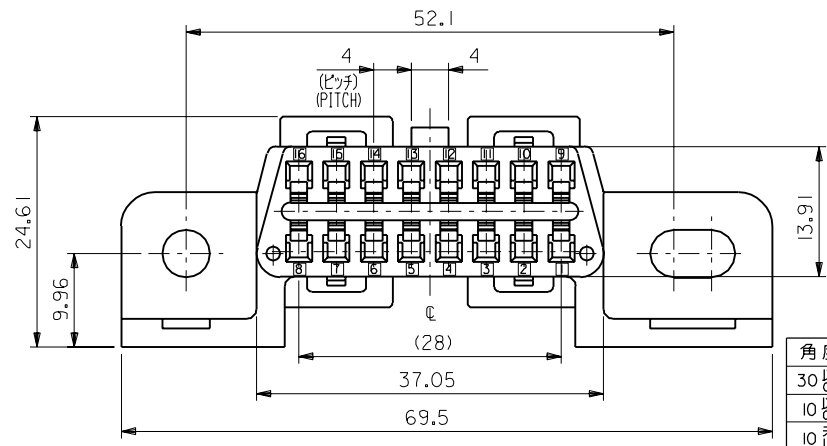
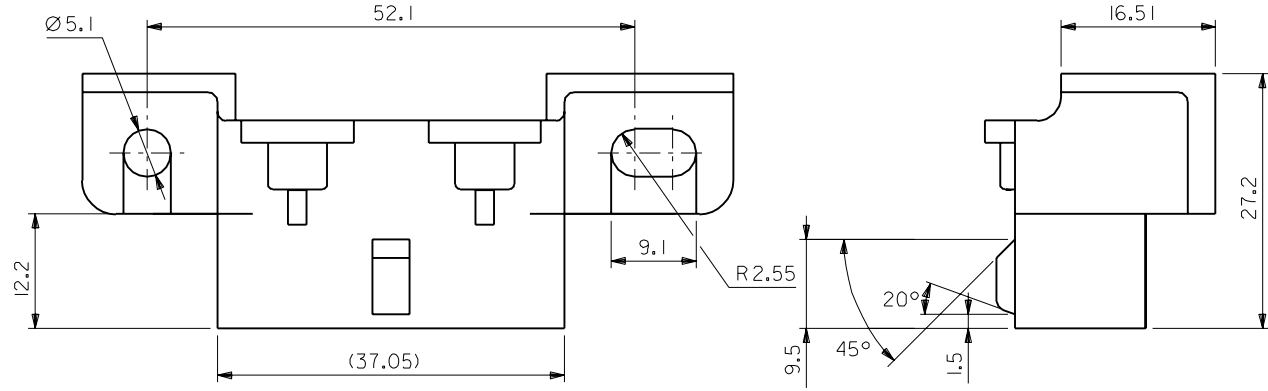
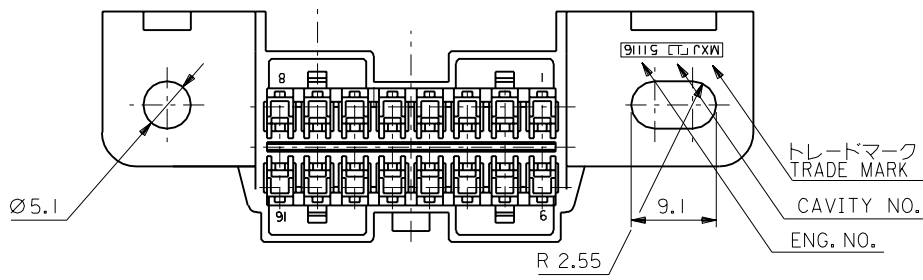
D

C

B

A

MM DIMENSIONS IN METRIC DO NOT SCALE DRAWING



注記
NOTES

- 適合ターミナル : 50420-8*00
APPLICABLE TERMINAL : 50420-8*00
- 適合リテーナ : 51118-1605
APPLICABLE RETAINER : 51118-1605

51116-1601	16
ENG. NO.	NO. OF CKT.

材料 MATERIAL		PBTP,UL94V-0 (黒色 BLACK)	
仕上げ FINISH		—#—	
適用電線範囲 WIRE RANGE		—#—	
被覆外径 INS. RANGE		—#—	
DRAWN BY '94/3/3	K.FURUYAMA	CHK'D BY '96/1/24	M.SANO M.SAKANO M.ADACHI
APP'D BY '96/1/24	M.ENOMOTO	DATE	尺度 SCALE 2 : 1

molex MOLEX-JAPAN CO.,LTD.
日本モレックス株式会社

REVISE ONLY ON CAD SYSTEM

TITLE 名称
4.0 WIRE TO WIRE CONN.REC.HOUSING WITH FLANGES
(SAE J1962 DIAGNOSTIC CONNECTOR)

角度 ANGLE	+3°
30以上 OVER	+0.3
10以上 30未満 UNDER	+0.25
10未満 UNDER	+0.2
一般公差 GENERAL TOLERANCES	

記号 LTR	変更内容 REVISION RECORD	DR. CHK.	日付 DATE
A	変更 (JA60090) REVISD	K.F.	'96/1/23
O	新規作成 (JA5066) RELEASED	K.F.	'94/3/2

DWG. NO. SD-51116-***0* REV A