

PLEASE CHECK WWW.MOLEX.COM FOR LATEST PART INFORMATION

Part Number: [0350281111](#)
Status: **Active**
Description: 1.78mm (.070") Tab Terminal, Female, 14-20 AWG (2.08-0.52mm²), Pre-Tin Plated, Reel

Documents:

[Drawing \(PDF\)](#) [Product Specification PS-35316-001 \(PDF\)](#)
[Product Specification PS-35314-001 \(PDF\)](#) [RoHS Certificate of Compliance \(PDF\)](#)

General

Product Family Crimp Terminals
 Series [35028](#)
 Crimp Quality Equipment Yes
 Product Name N/A

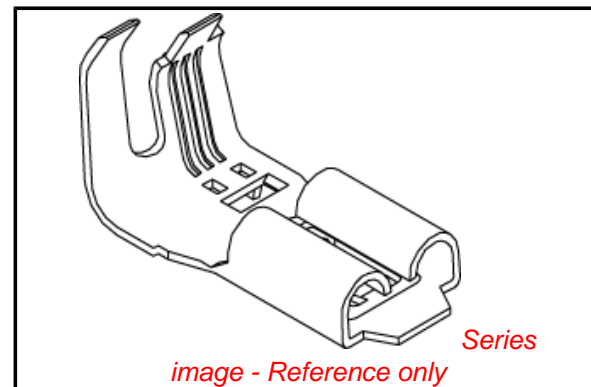
Physical

Gender Female
 Material - Metal Phosphor Bronze
 Material - Plating Mating Tin
 Material - Plating Termination Tin
 Packaging Type Reel
 Plating min: Mating (µin) 32.00
 Plating min: Mating (µm) 0.800
 Plating min: Termination (µin) 32.00
 Plating min: Termination (µm) 0.80
 Termination Interface: Style Crimp or Compression
 Wire Insulation Diameter 3.60mm (.142") max.
 Wire Size AWG 14, 16, 18, 20
 Wire Size mm² N/A

Material Info

Reference - Drawing Numbers

Product Specification PS-35314-001, PS-35316-001
 Sales Drawing SD-35028-****



EU RoHS

ELV and RoHS Compliant
REACH SVHC Contains SVHC: No
Halogen-Free Status

China RoHS



Need more information on product environmental compliance?

Email productcompliance@molex.com
 For a multiple part number RoHS Certificate of Compliance, [click here](#)

Please visit the [Contact Us](#) section for any non-product compliance questions.

Search Parts in this Series

[35028Series](#)

Mates With

1.78mm (.070") Male Tab

Use With

[35159](#)

Application Tooling | FAQ

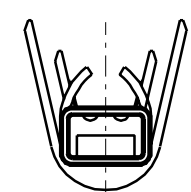
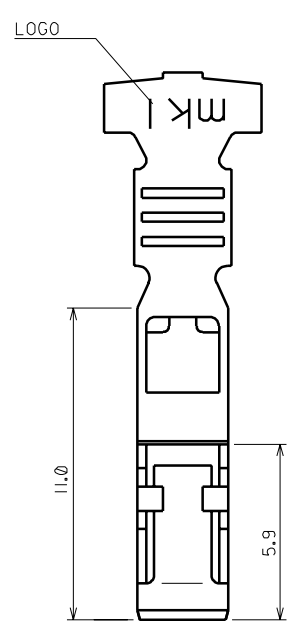
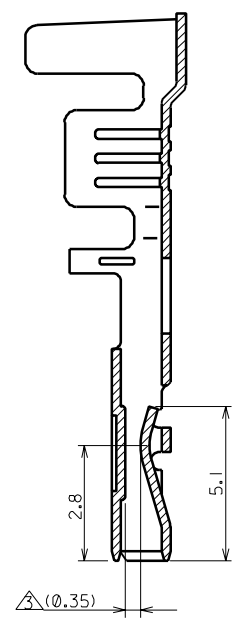
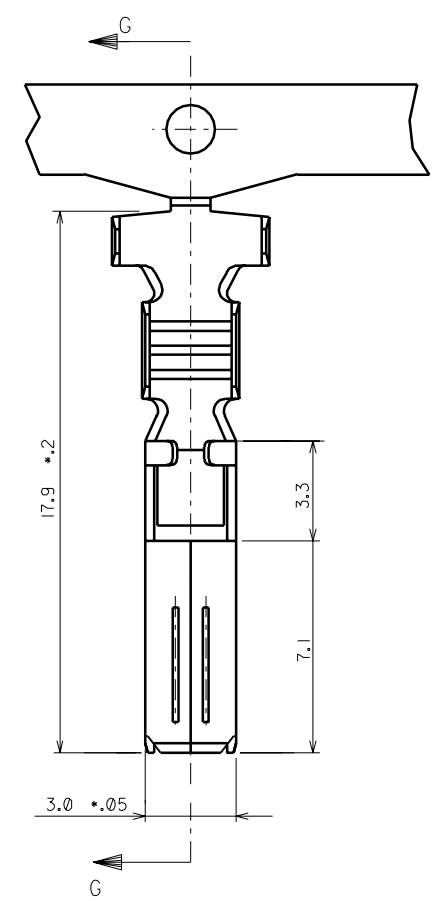
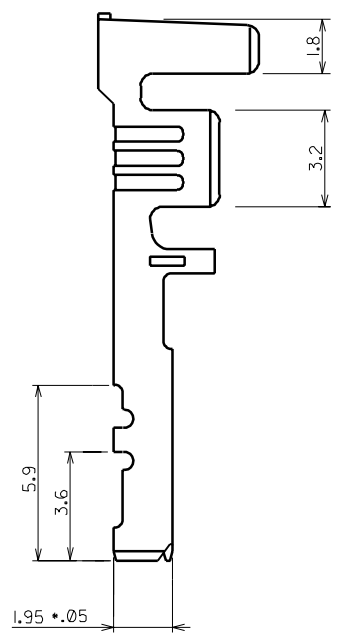
Tooling specifications and manuals are found by selecting the products below. Crimp Height Specifications are then contained in the Application Tooling Specification document.

Global

Description	Product #
FineAdjust™ Applicator	0639001800

DO NOT SCALE DRAWING
DIMENSION IN METRIC

PROJECT NO.
SIMILAR ITEM
DWG. NO.
SD-35028-*****



NOTES

1. MATERIAL: PHOSPHOR BRONZE
THICKNESS : 0.30 ± 0.02
WIDTH : 22.8 ± 0.08
2. PLATING: PREPLATING (REFLOW TREATMENT)
3. MALE TAB (THICK 0.6 ± 0.05) FIT.
- INSERTION FORCE: 0.8kgf. MAX.
- RETENTION FORCE: 0.3kgf. MIN.
4. WIRE SIZE : AWG #20 × 2 35028-9502
AWG #18 ± #22 35028-9010
AWG #14 ± #20 35028-1111

REVISED EC NO. KOR2002-0074 DRWN: C.B.CHIN 02/02/19 CHK: W.Y.YANG APPR: C.W.LEE	DESCRIPTION MAJOR ▲ = 0 CRITICAL ▽ = 0	QUALITY SYMBOLS		GENERAL TOLERANCES: (UNLESS SPECIFIED)	SCALE 6:1	DESIGN UNITS <input checked="" type="checkbox"/> mm <input type="checkbox"/> INCH	THIRD ANGLE PROJECTION	DIMENSIONS: <input type="checkbox"/> mm <input type="checkbox"/> INCH <input checked="" type="checkbox"/> mm ONLY	SHT	REV	
		4 PLACES	±0.	±.	DRAWN BY & DATE H.J.KIM 94/06/25	TITLE: .070 FEMALE TERMINAL					
H	REV	3 PLACES	±0.	±.	CHECKED BY & DATE B.K.CHOI 94/06/25	MOLEX MOLEX INCORPORATED					
		2 PLACES	±0.15	±.	APPROVED BY & DATE	CAD FILENAME S35028.DGN	MATERIAL NO. SEE NOTES	DRAWING NO. SD-35028-****	SHEET NO. IOF 1	SIZE B	
		1 PLACE	±0.15	±.	ANGULAR: ± 0.5°	THIS DRAWING CONTAINS INFORMATION THAT IS PROPRIETARY TO MOLEX INCORPORATED AND SHOULD NOT BE USED WITHOUT WRITTEN PERMISSION.					
DRAFT WHERE APPLICABLE MUST REMAIN WITHIN DIMENSIONS				THIS DRAWING CONTAINS INFORMATION THAT IS PROPRIETARY TO MOLEX INCORPORATED AND SHOULD NOT BE USED WITHOUT WRITTEN PERMISSION.							