

PLEASE CHECK WWW.MOLEX.COM FOR LATEST PART INFORMATION

Part Number: [0350729802](#)
Status: **Active**
Description: MP-Lock™ Quick Disconnect, Female, for 14-18 AWG (2.00-0.80mm²), Metal Strip, Tab 6.35 by 0.81mm (.250 by .031"), Pre-Tin Plated

Documents:

[Drawing \(PDF\)](#) [RoHS Certificate of Compliance \(PDF\)](#)
[Product Specification PS-35960-001 \(PDF\)](#)

Agency Certification

CSA LR95446
 UL E92853

General

Product Family Quick Disconnects
 Series [35072](#)
 Crimp Quality Equipment Yes
 Product Name MP-Lock™
 Type Quick Disconnect

Physical

Barrel Type Open
 Gender Female
 Glow-Wire Compliant No
 Insulation None
 Lock to Mating Part Yes
 Material - Metal Brass
 Material - Plating Mating Tin
 Material - Plating Termination Tin
 Orientation Straight
 Packaging Type Reel
 Plating min: Mating (µin) 32.00
 Plating min: Mating (µm) 0.800
 Plating min: Termination (µin) 32.00
 Plating min: Termination (µm) 0.80
 Polarized to Mating Part Yes
 Tab Thickness 0.81mm (.032")
 Tab Width 6.35mm (.250")
 Temperature Range - Operating -40°C to +105°C
 Termination Interface: Style Crimp or Compression
 Wire Insulation Diameter 2.20-3.40mm (.087-.134")
 Wire Size AWG 14, 16, 18
 Wire Size mm² 0.80 - 2.00

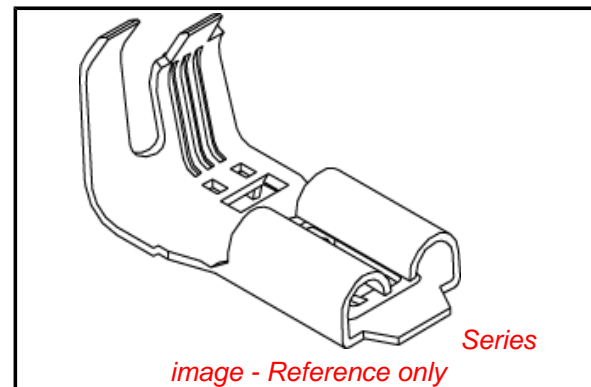
Electrical

Voltage - Maximum 300V

Material Info

Reference - Drawing Numbers

Product Specification PS-35960-001
 Sales Drawing SD-35072-9702



EU RoHS

ELV and RoHS Compliant
REACH SVHC
Contains SVHC: No
Halogen-Free Status

China RoHS



Need more information on product environmental compliance?

Email productcompliance@molex.com
 For a multiple part number RoHS Certificate of Compliance, [click here](#)

Please visit the [Contact Us](#) section for any non-product compliance questions.

Search Parts in this Series

[35072Series](#)

Use With

[35196](#) , [35959](#)

Application Tooling | FAQ

Tooling specifications and manuals are found by selecting the products below. Crimp Height Specifications are then contained in the Application Tooling Specification document.

Global

Description	Product #
Hand Crimp Tool for .250 MP-Lock Crimp Terminals	0638196400
Extraction Tool for MP-Lock™ Quick Disconnect	0638135500
Rear Feed Mini-Mac™ Applicator for MP-Lock™ Quick	0638025000

Disconnect, Female
14-18 AWG

Japan

Description

Product #

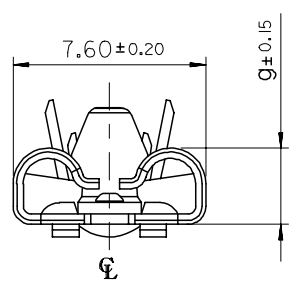
End-Feed Applicator 0573693100

This document was generated on 04/15/2010

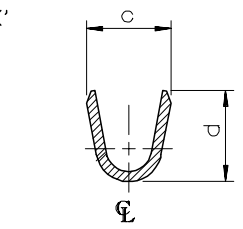
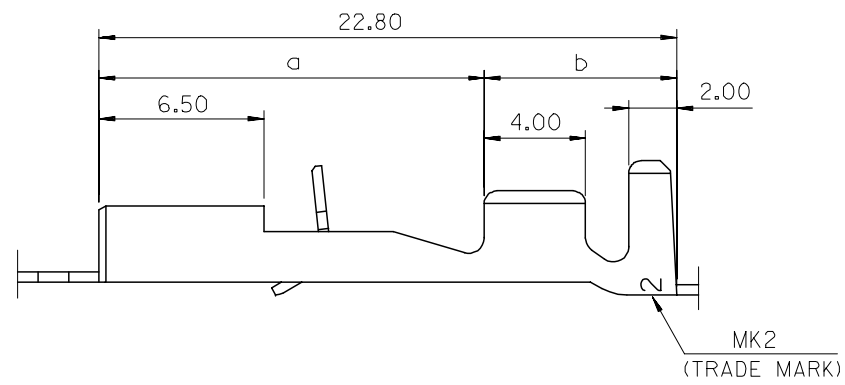
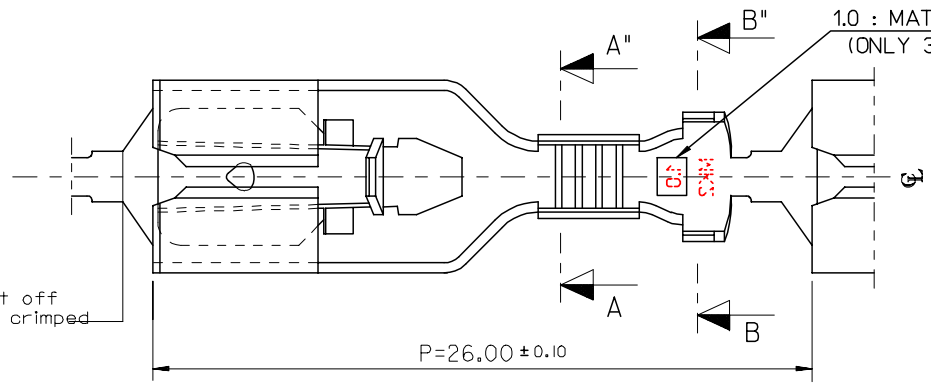
PLEASE CHECK WWW.MOLEX.COM FOR LATEST PART INFORMATION

DWG. NO. SD-35072-9702
 PROJECT NO.
 SIMILAR ITEM
 DO NOT SCALE DRAWING DIMENSION IN METRIC

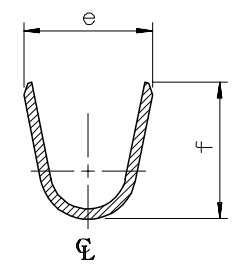
8 7 6 5 4 3 2 1



This part is cut off when wires are crimped



SECTION: A-A'



SECTION: B-B'

ENG. NO.	a	b	c	d	e	f	g	WIRE SIZE	INSUL. DIA.	MATING TAB THICK'
35072-9702	15.1	7.7	2.6	3.2	4.8	4.8	2.92	AWG#22-18	1.5-3.1	0.8 t
35072-9802	15.1	7.7	3.7	3.6	5.0	5.5		AWG#18-14	2.2-3.4	
35072-9902	14.4	8.4	4.6	5.4	6.8	6.2		AWG#14-10	3.0-5.1	
35072-9712	15.1	7.7	2.6	3.2	4.8	4.8	3.00	AWG#22-18	1.5-3.1	1.0 t

- NOTES
- MATERIAL: TIN-PLATED BRASS 0.4mm THICK'
 - APPLICABLE HOUSING: 35196-0110
 - MATING TAB WIDTH : 6.35mm

REDRAWN ECN NO. KOR2006-0031 DRWN: J.B.JIN 05/08/30 CHK: W.Y.YANG APPR: C.W.LEE	DESCRIPTION MAJOR CRITICAL C=0	QUALITY SYMBOLS	GENERAL TOLERANCES: (UNLESS SPECIFIED)	SCALE 5:1	DESIGN UNITS <input checked="" type="checkbox"/> mm <input type="checkbox"/> INCH	THIRD ANGLE PROJECTION <input type="checkbox"/> FIRST ANGLE <input checked="" type="checkbox"/> THIRD ANGLE	DIMENSIONS: <input type="checkbox"/> mm <input type="checkbox"/> INCH <input checked="" type="checkbox"/> mm ONLY	SHT REV			
		4 PLACES ±0. ±-	3 PLACES ±0. ±-	2 PLACES ±0.30 ±-	1 PLACE ±0.30 ±-	ANGULAR: ± 1 °	DRAFT WHERE APPLICABLE MUST REMAIN WITHIN DIMENSIONS	DRAWN BY & DATE W.Y.YANG 96/03/19	CHECKED BY & DATE B.K.CHOI 96/03/19	APPROVED BY & DATE C.W.LEE 96/03/19	TITLE: .250 MP-LOCK RECEPTACLE TERMINAL
		MOLEX INCORPORATED			CAD FILENAME W.Y.YANG 93/03/19	MATERIAL NO. SEE TABLE	DRAWING NO. SD-35072-9702	SHEET NO. 1 OF 1			
		THIS DRAWING CONTAINS INFORMATION THAT IS PROPRIETARY TO MOLEX INCORPORATED AND SHOULD NOT BE USED WITHOUT WRITTEN PERMISSION.						SIZE B			

8 7 6 5 4 3 2 1 KOREA MX-A3