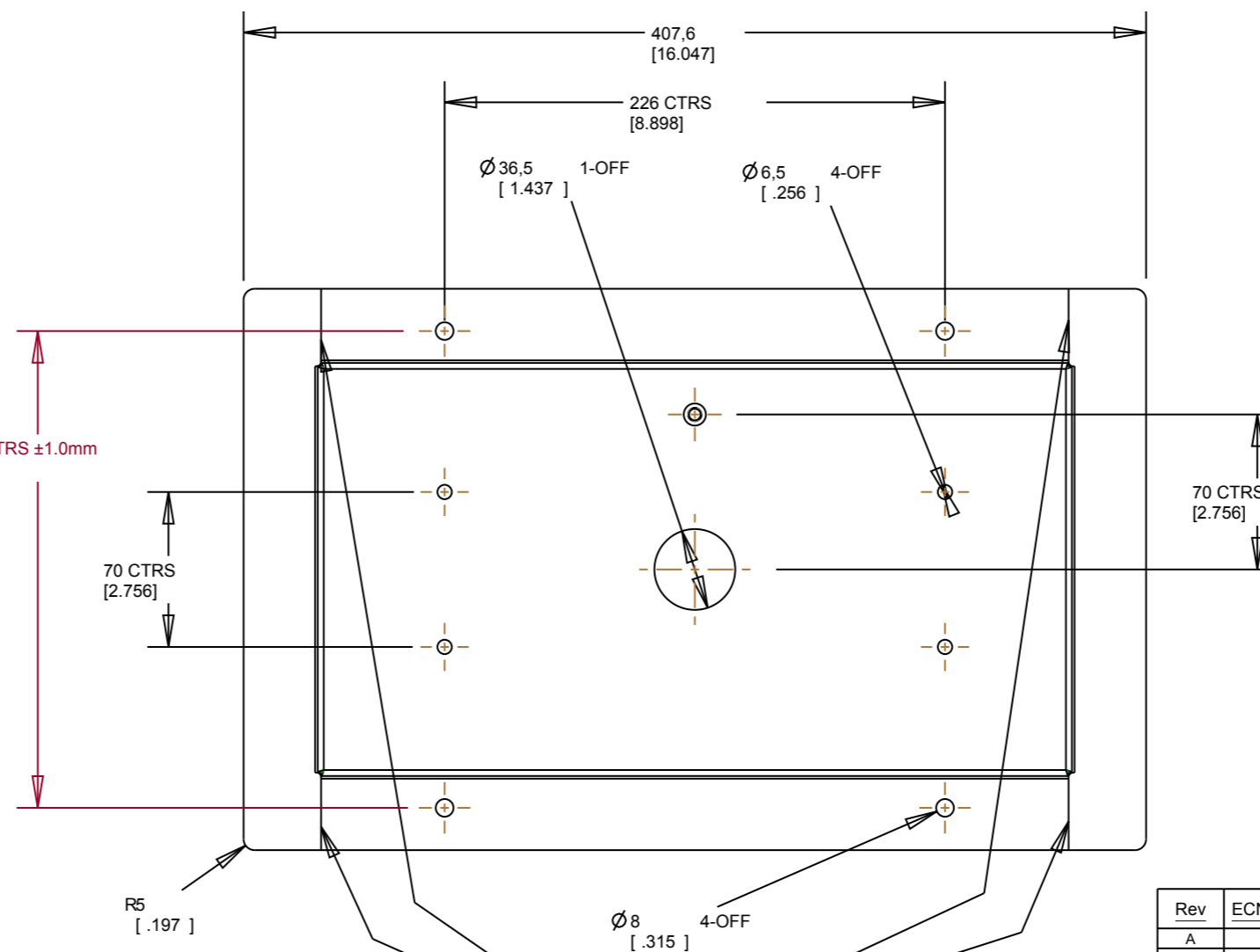
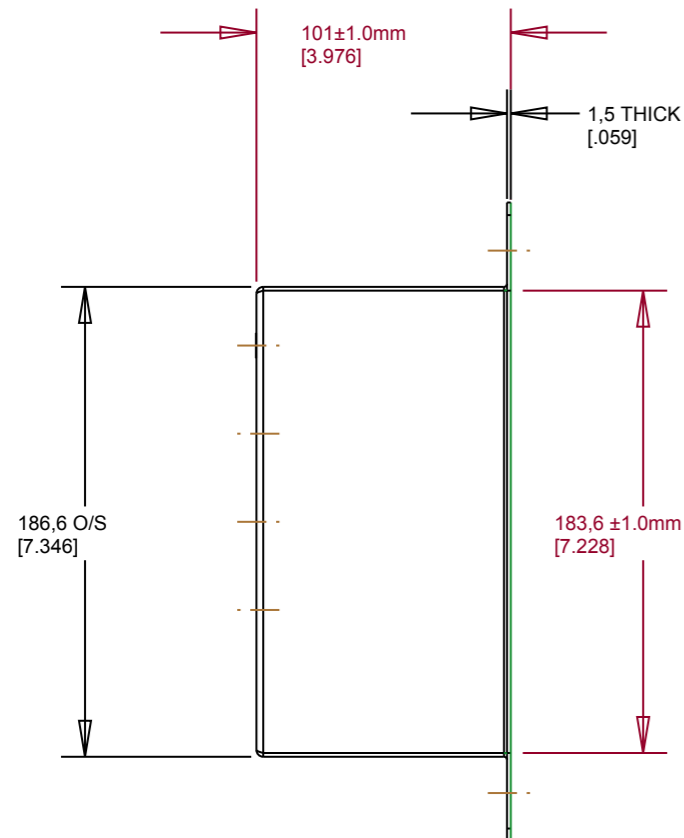
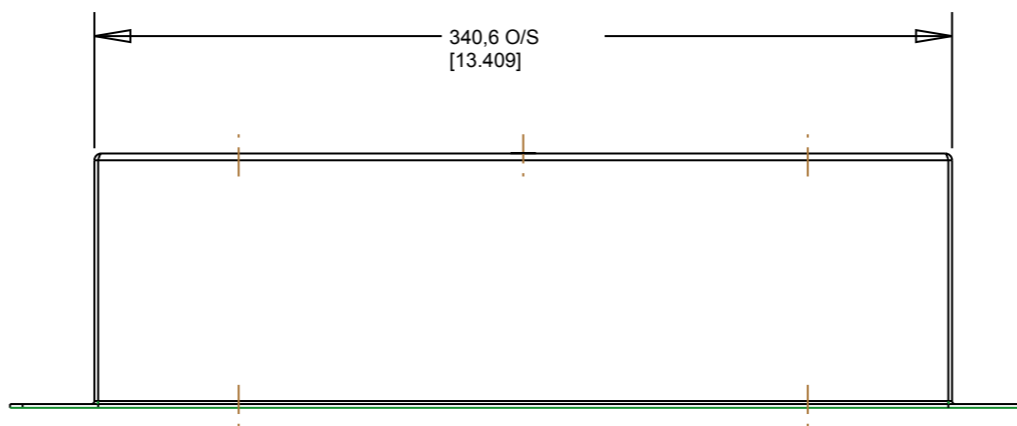


SCALE 0.250

Ø9 HOLE 1-OFF  
M6 POPNUT TO BE FITTED SECURELY  
(NOTE ORIENTATION.)



WELD, FLATTEN AND POLISH ALL FOUR SEAMS  
ENSURE BACK SURFACE IS ALSO FLAT

PART NO.	DESCRIPTION	
A70-000627-LG	LIGHT GREY	RAL 7001
A70-000627-DG	DARK GREY	RAL 7011
A70-000627-BK	BLACK	RAL 9005
A70-000627-WH	WHITE	RAL 9010

NOTES:

- PLEASE REFER TO 3D CAD FILE FOR ADDITIONAL DIMENSIONS. FILE ISSUE MUST MATCH DRAWING ISSUE.
- POWDERCOAT ALL SURFACES -- CERTIFICATE OF CONFORMITY TO BE SUPPLIED WITH EACH BATCH.
- POWDERCOAT TO BE MATT FINISH WITH NO TEXTURE (SEE TABLE.)
- NO CHANGES WITHOUT DIALIGHT ENGINEERING APPROVAL.
- ONLY RoHS AND REACH COMPLIANT MATERIAL ACCEPTED.
- THREADED INSERT TO BE SECURED PRESSED IN PLACE.

Rev	ECN #	Description	Drawn	Check	App'd	Q.C.	Date
A		FIRST ISSUE	CJG	GEA	DW	FT	1-JUN-2010
B		SCREW EARTH	CJG	GEA	DW	FT	24-JUN-2010
C	301	WELDED CORNERS CORNER RADS	CJG	GEA	DW	FT	11-OCT-2010

**Dialight** This drawing and all information contained is the property of Dialight. Unauthorised copying or disclosure is forbidden. All Dimensions in mm [Inches.] Imperial dimensions are for reference only, don't use for machining. Features coloured in red to be checked during Goods In inspection. Unless otherwise stated tolerances: X=±0.5mm, X.X=±0.2mm, X.XX=±0.1mm, angles: ±1°

Material: ZINTEC Finish: SEE NOTES

Description: **RECESSED CEILING MOUNT -- WPA MAIN BODY**

Paper Size: A3	Scale: 0.333	Drawing Number: A70-000627	Revision: C
----------------	--------------	----------------------------	-------------

Sheet 1 of 1