

B-74-09-51

T-74-09-01

HF - VHF High Intercept Low Noise Amplifiers

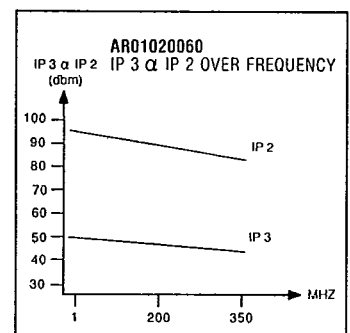
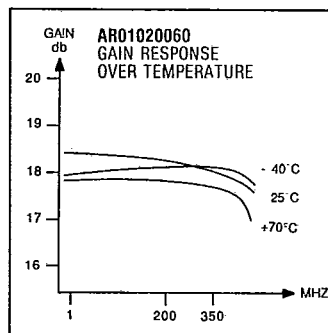
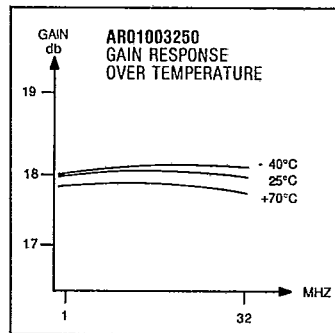
.01-250MHz

28VDC

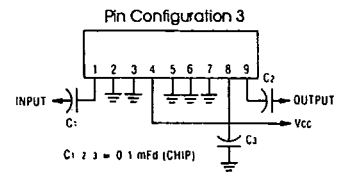
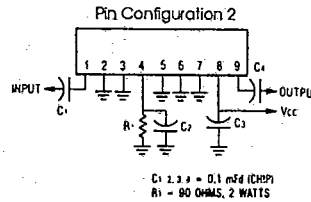
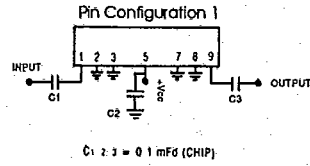
Specifications @ 25°C

Model No.	Freq. (MHz)	IP3 (dbm) Typ.	IP2 (dbm) Typ.	Gain (db) Typ.	N.F. (db) max.	DC (ma) NOM.	P1db (dbm) min.	Outline Dwg.	Pin Config.
AR00005010	.01-50	+40	+ 68	12	10	250	+27	N	-
AR00003250	.4-32	+51	+ 92	18	4.8	220	+30	OL1	1
AR00003251	.4-32	+54	+106	18	5.8	440	+32	OL4	-
AR00002550	.4-88	+50	+ 80	18	4.0	240	+30	OL1	1
AR01003252	2-32	+46	+ 80	18	3.6	150	+26	OL1*	1
AR01003250	2-32	+51	+ 92	18	4.5	220	+30	OL1	1
AR01003251	2-32	+54	+110	17	5.5	440	+32	OL4	-
AR02003250	2-32	+52	+ 92	12	5.5	220	+30	OL1	1
AR02003251	2-32	+54	+110	11	6.2	440	+32	OL4	-
AR01003256	2-32	+56	+102	16	5.5	900	+34	OL15	-
AR00020050	.4-200	+48	+ 82	18	6.0	220	+29	OL1	1
AR02020055	2-200	+48	+ 82	12	5.8	220	+30	OL1	1
AR02020056	2-200	+50	+102	10	6.9	440	+32	OL4	-
AR03002025	20-250	+49	+ 82	18	4.4	470	+32	OL1	1
AR01020049	5-250	+34	+ 68	14	2.6	60	+17	OL2	-
AR01020052	5-250	+43	+ 76	17	3.8	130	+25	OL1	1
AR01020060	2-250	+48	+ 84	18	5.5	220	+30	OL1	1
AR01020055	2-250	+48	+ 82	35	3.8	350	+31	OL1	1
AR01020061	2-250	+50	+102	17	6.6	440	+32	OL4	-

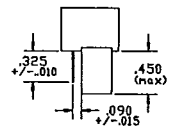
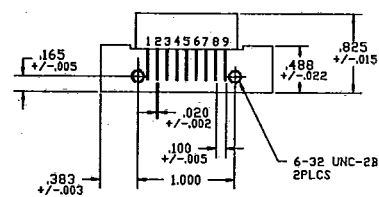
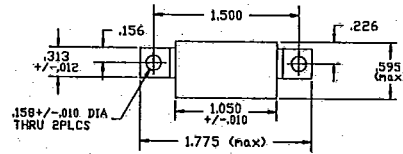
\*A 50Ω, 2W Resistor must be connected in series with Vcc.  
Specifications Subject To Change Without Notice



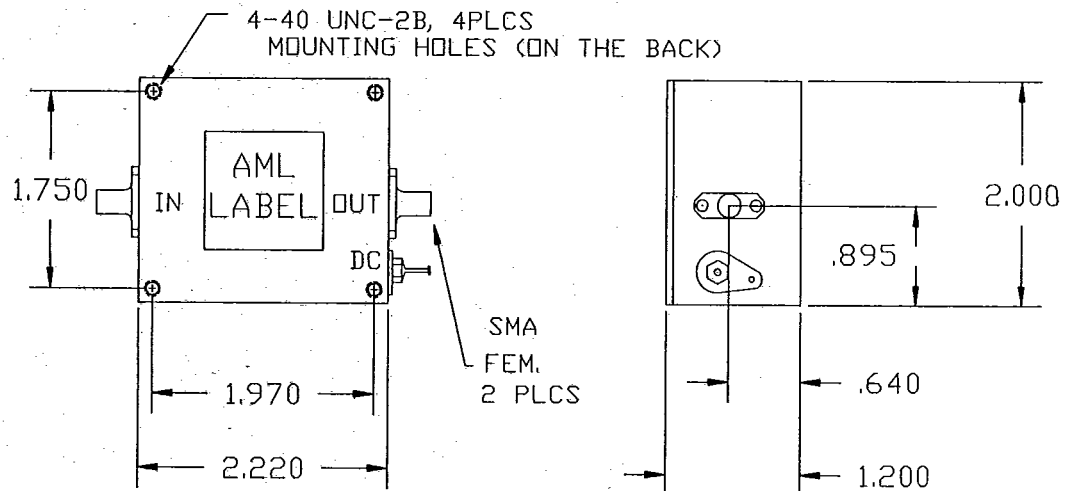
Pin Configurations



Outline Drawings



OL 1



OL 2